



Altec Lansing BoomJacket 2 Motherboard Replacement

How to replace the Altec Lansing BoomJacket 2 motherboard.

Written By: Zach Braaten



INTRODUCTION

Replacing the motherboard can help with bluetooth connection and control panel buttons issues.



TOOLS:

- [Phillips #1 Screwdriver](#) (1)
PH1
- [Tweezers](#) (1)
- [Metal Spudger](#) (1)



PARTS:

- [4mm x 12mm screw](#) (6)
Phillips Head
- [Rubber Stopper](#) (6)
A rubber plug that keeps the screw sealed

Step 1 — Altec Lansing BoomJacket 2 Disassembly



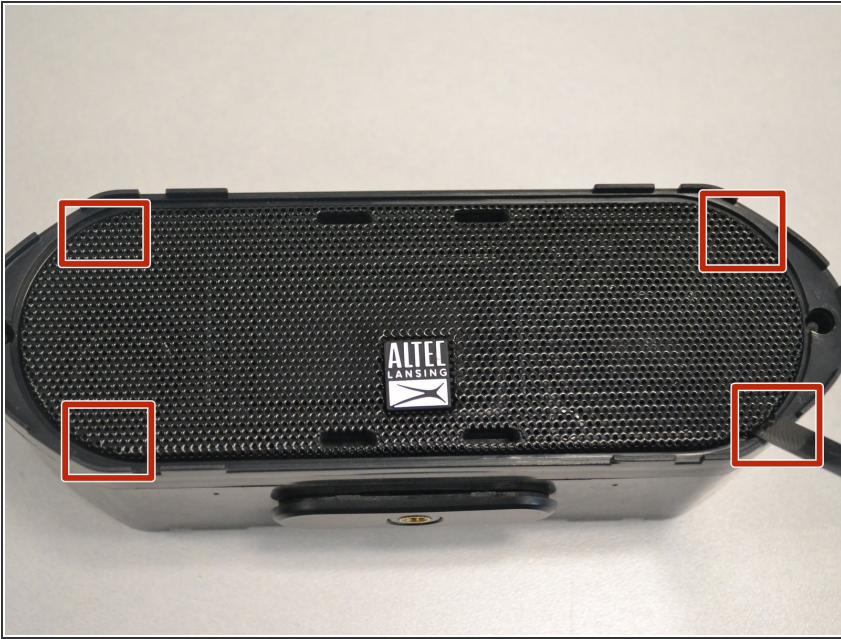
- Starting from any side, use your fingers to grab the black rubber sleeve and gently pull away from the speaker on both sides.

Step 2



- Using your fingers, grab the blue sleeve from one side and pull away from the unit.

Step 3



- At each of the marked pry spots, use the metal spudger to lift the speaker grill away from the case.

⚠ Avoid using excessive force to prevent bending the grill.

Step 4



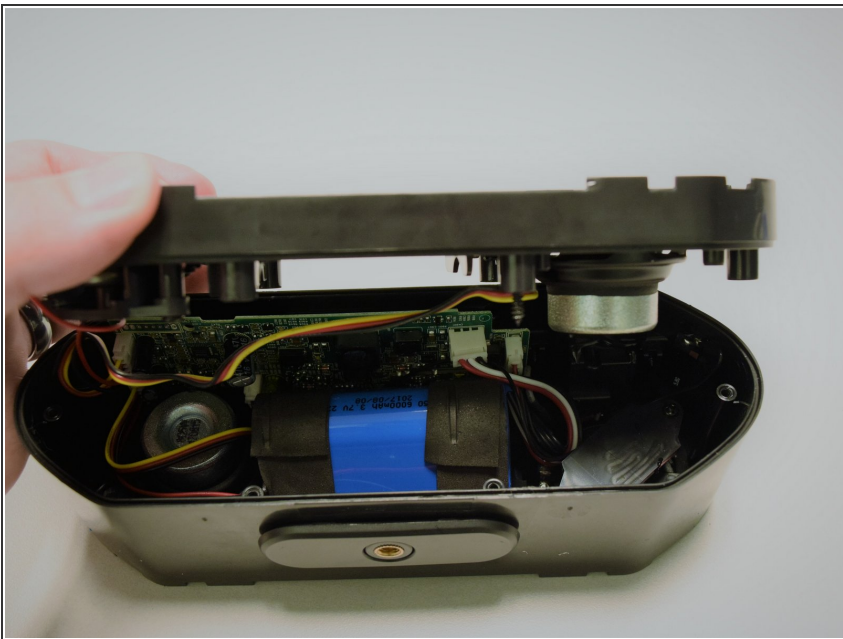
- Use the tweezers to remove the six rubber stoppers. There are four in the middle and two on the sides.

Step 5



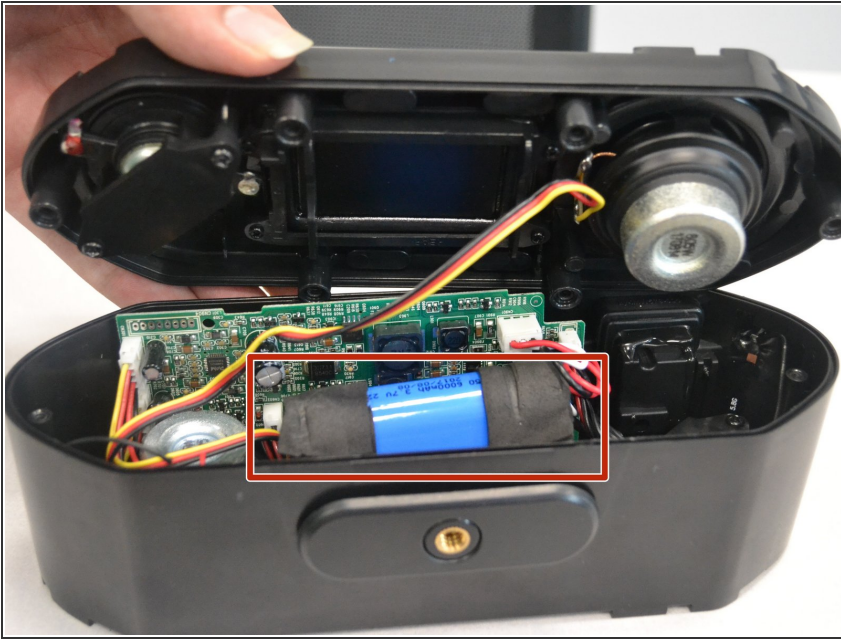
- Use the PH1 Phillips screwdriver to remove the six 12mm screws that lie underneath each rubber stopper.

Step 6



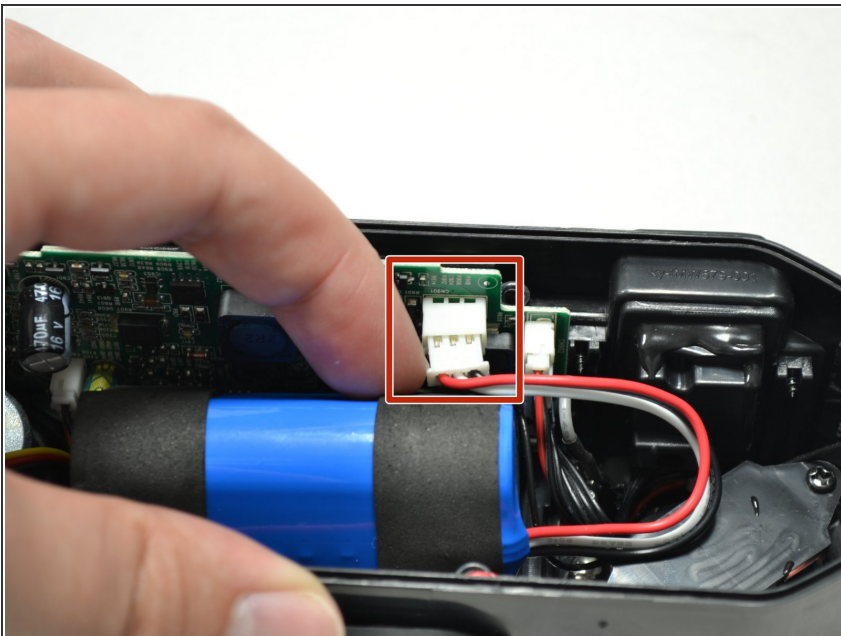
- Gently pull apart the front panel from the base of the speaker.

Step 7 — Battery



- The battery will be in the middle of the speaker when the case is open.

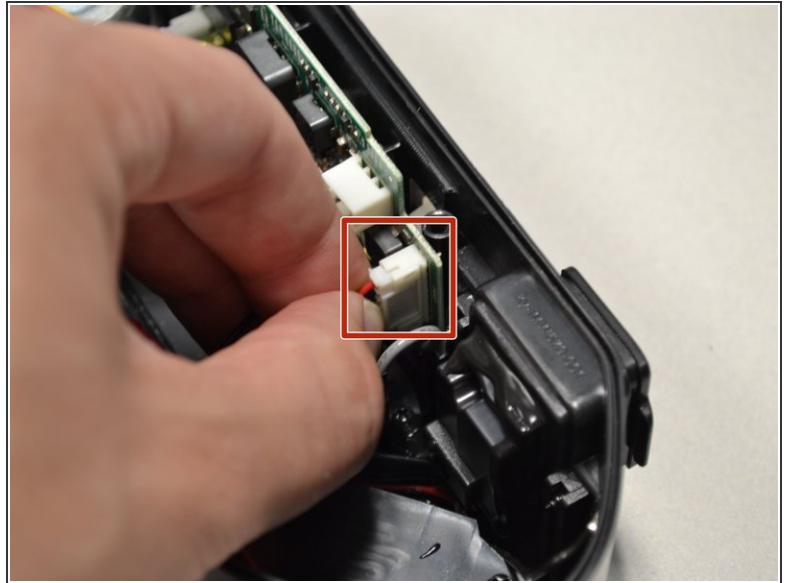
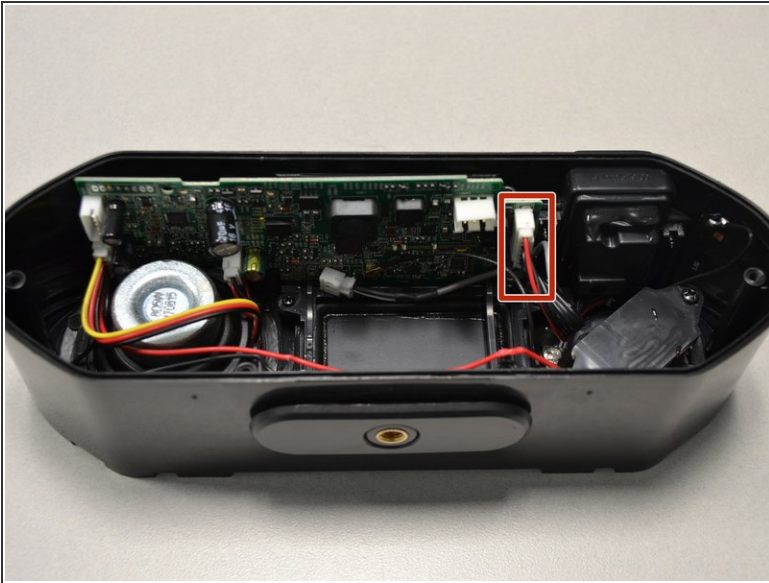
Step 8



- Pull firmly from both sides of the pin to disconnect the battery cable from the motherboard.
- Pull battery up and away from speaker without catching any other components.

⚠ Motherboards have fragile components and can easily be damaged if they are hit or pulled on while extracting other parts.

Step 9 — Motherboard



- Disconnect the furthest right hand plug first.

⚠ Do not pull from the wires. Pull from the white connector.

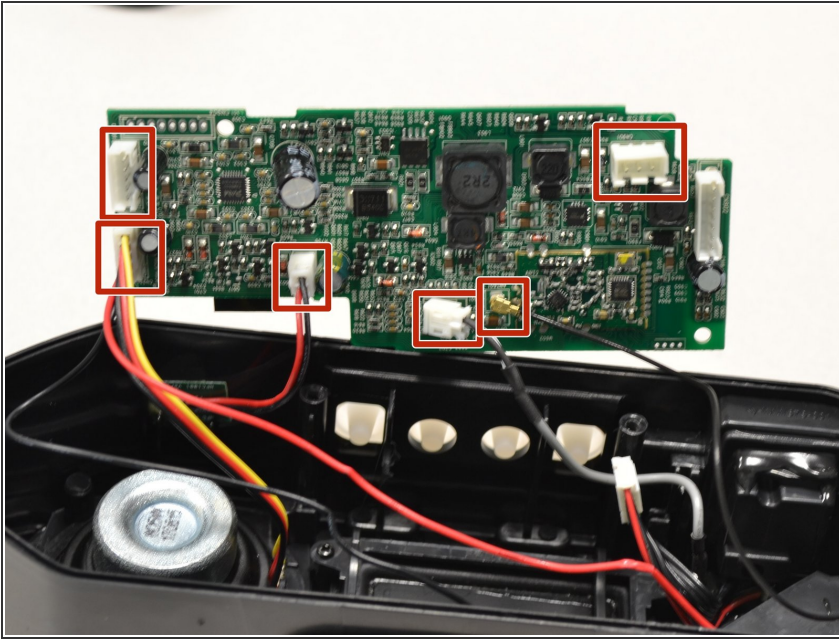
Step 10



- Gently pull the motherboard directly upwards to avoid damage.

⚠ Be sure to lift slowly.

Step 11



- Disconnect the remaining connectors from the motherboard.
- ⚠ Do not forcefully pull connectors. Pull from the connectors, not from the wires.

To reassemble your device, follow these instructions in reverse order.