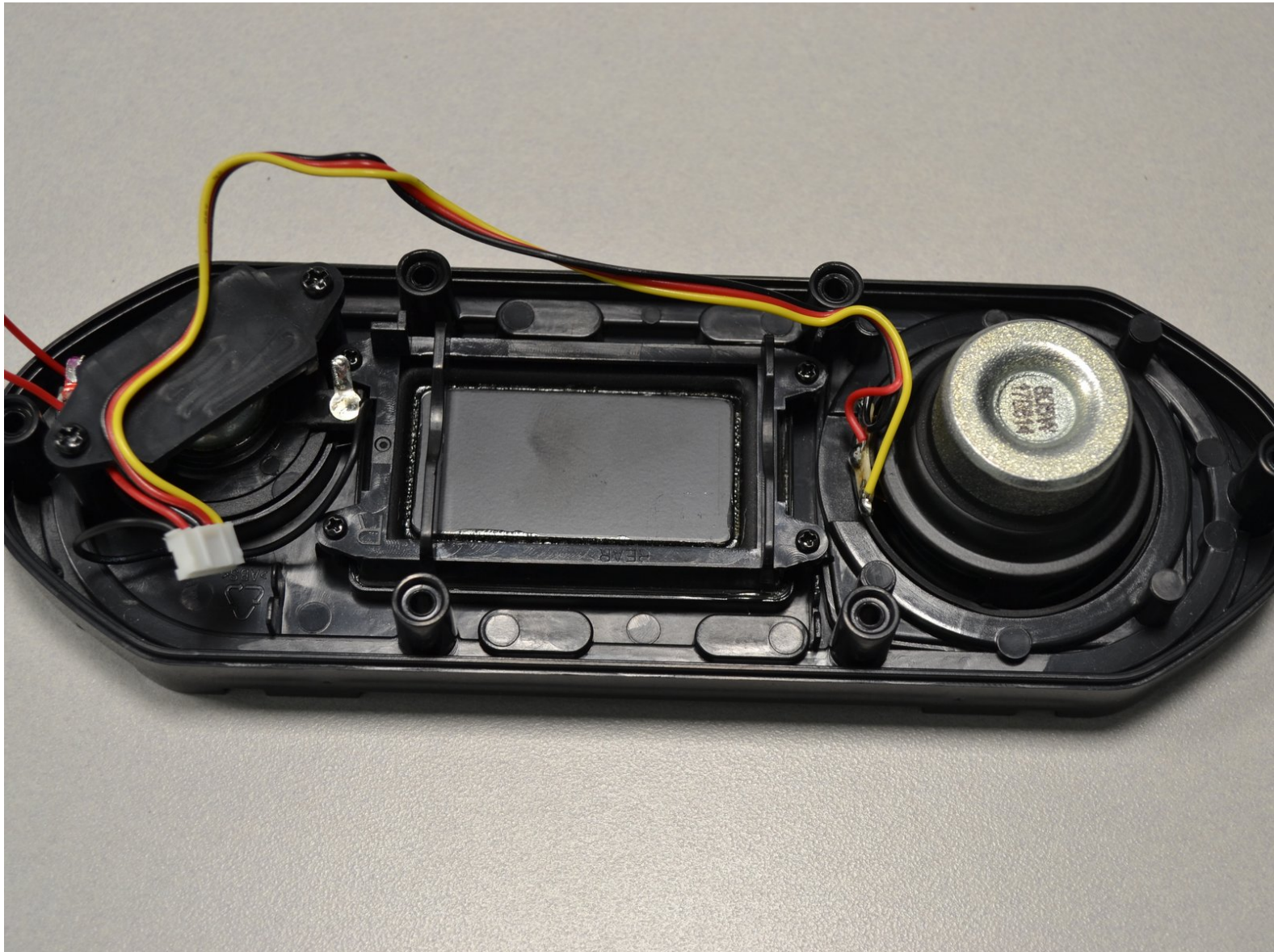




Altec Lansing BoomJacket 2 Speaker Replacement

This guide will help you replace your speakers for your Altec Lansing BoomJacket 2.

Written By: Zach Braaten



INTRODUCTION

If the speaker sound quality is distorted or quiet you can follow this guide to replace the defective speaker.



TOOLS:

- [Phillips #1 Screwdriver](#) (1)
PH1
- [Tweezers](#) (1)
- [Metal Spudger](#) (1)



PARTS:

- [4mm x 12mm screw](#) (6)
Phillips Head
A rubber plug that keeps the screw sealed
- [Rubber Stopper](#) (6)
- [12 mm x 3 mm](#) (6)
Philips
There is a built in washer on the head of the screw

Step 1 — Altec Lansing BoomJacket 2 Disassembly



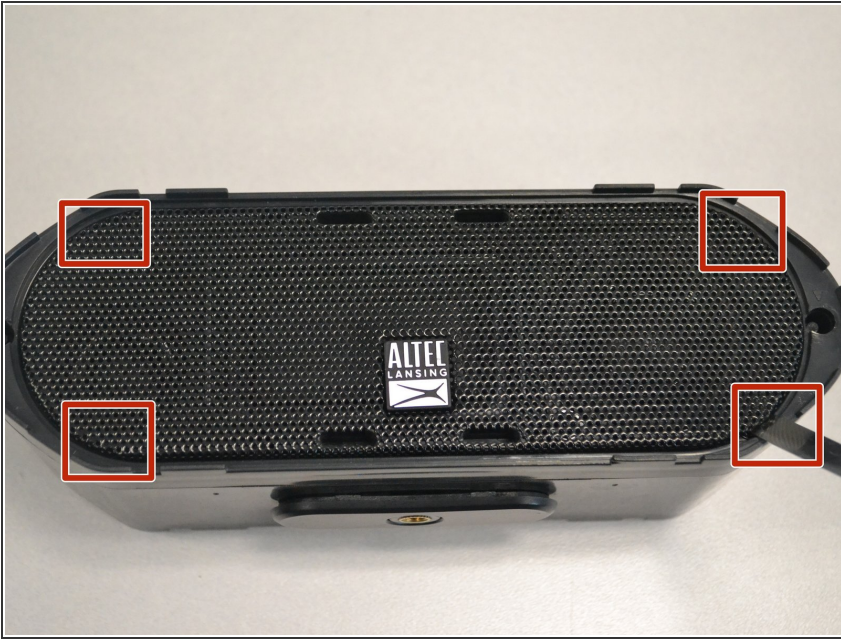
- Starting from any side, use your fingers to grab the black rubber sleeve and gently pull away from the speaker on both sides.

Step 2



- Using your fingers, grab the blue sleeve from one side and pull away from the unit.

Step 3



- At each of the marked pry spots, use the metal spudger to lift the speaker grill away from the case.

⚠ Avoid using excessive force to prevent bending the grill.

Step 4



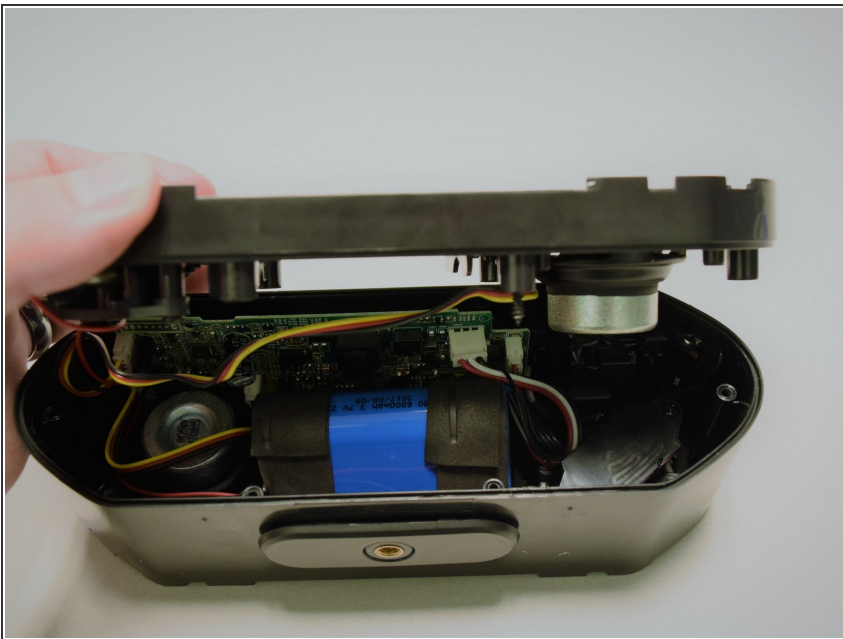
- Use the tweezers to remove the six rubber stoppers. There are four in the middle and two on the sides.

Step 5



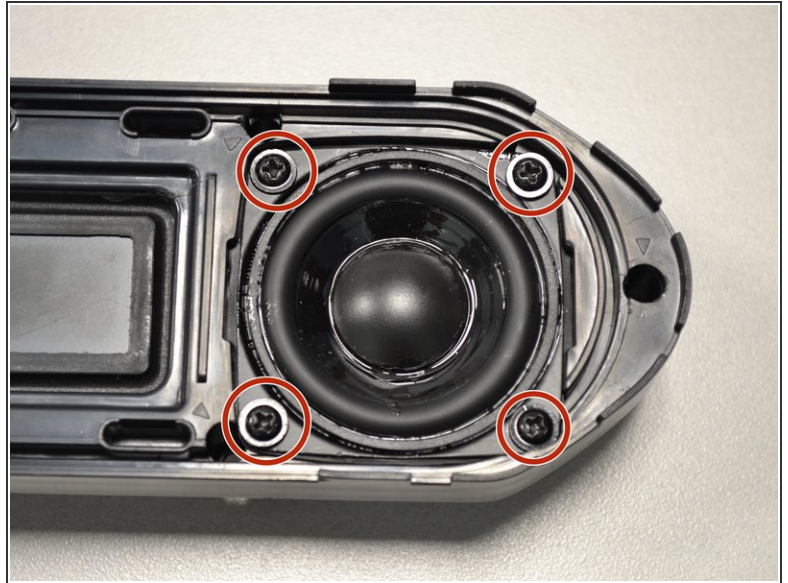
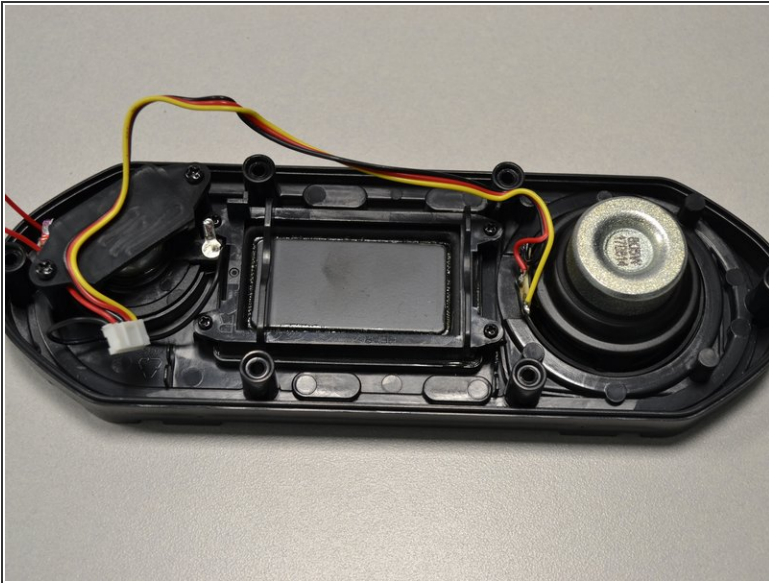
- Use the PH1 Phillips screwdriver to remove the six 12mm screws that lie underneath each rubber stopper.

Step 6



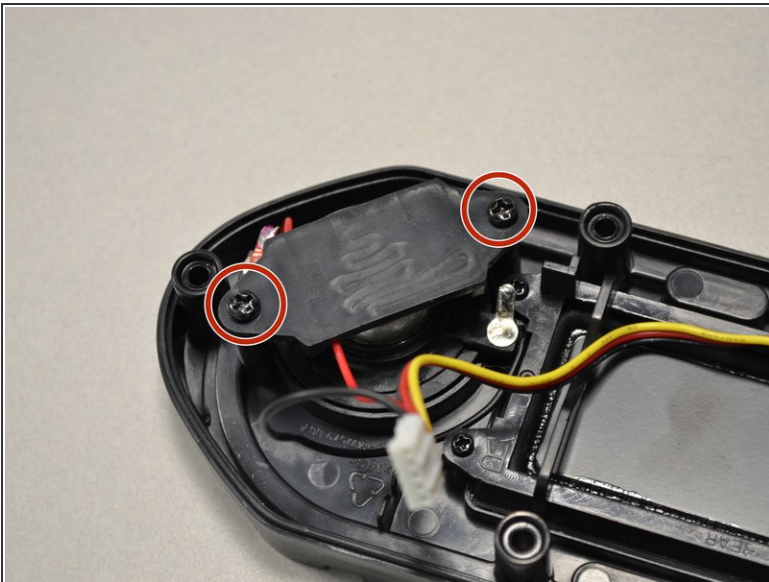
- Gently pull apart the front panel from the base of the speaker.

Step 7 — Speaker



- Unscrew the four screws holding the speaker in place.

Step 8



- Unscrew the two screws on the smaller speaker.
- Pull the small speaker through the larger speaker hole.

To reassemble your device, follow these instructions in reverse order.