



# Altec Lansing Mini Lifejacket 2 Back Panel Replacement

This step-by-step guide will show you how to replace the back panel of your Altec Lansing Mini Lifejacket 2.

Written By: Stephen Albrecht



---

## INTRODUCTION

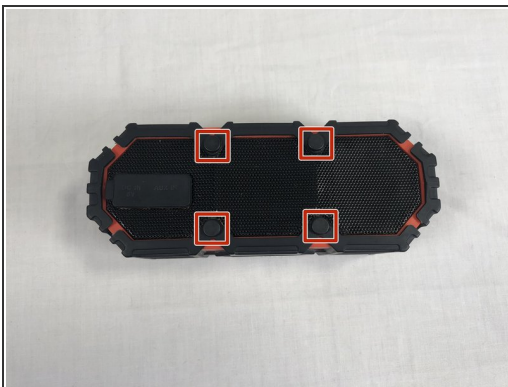
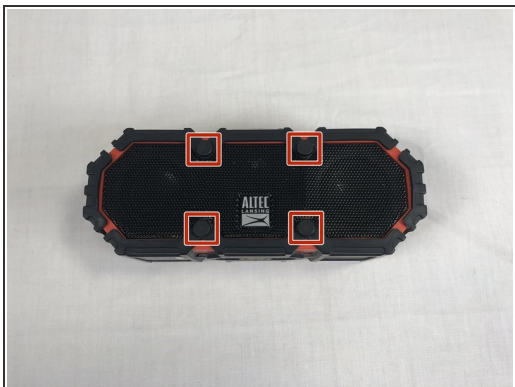
If your Altec Lansing Mini Lifejacket 2's aux input or power jack is faulty or damaged, this guide will show you how to replace the back panel of your device.

---

### TOOLS:

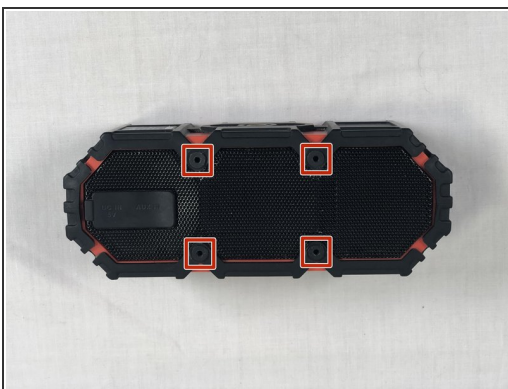
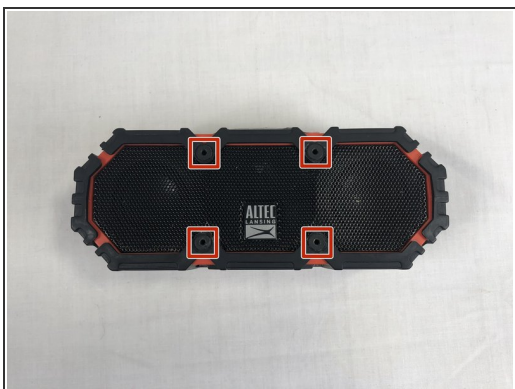
- [Metal Spudger](#) (1)
  - [Phillips #2 Screwdriver](#) (1)
  - [Phillips #1 Screwdriver](#) (1)
  - [Tweezers](#) (1)
  - [Spudger](#) (1)
-

## Step 1 — Back Panel



- Use the spudger to remove the eight black pins from the front and back of the wire screens.

## Step 2



- Detach the eight secondary pins from the front and back of the wire mesh plates with a spudger.

 Removing the secondary pins from the rubber casing is optional.



### Step 3



- Remove both black and orange layers from the speaker body.

### Step 4



- Remove the single 7.8mm Phillips #2 screw from the mounting plate located under the device.
- Slide the mounting plate out to remove it.

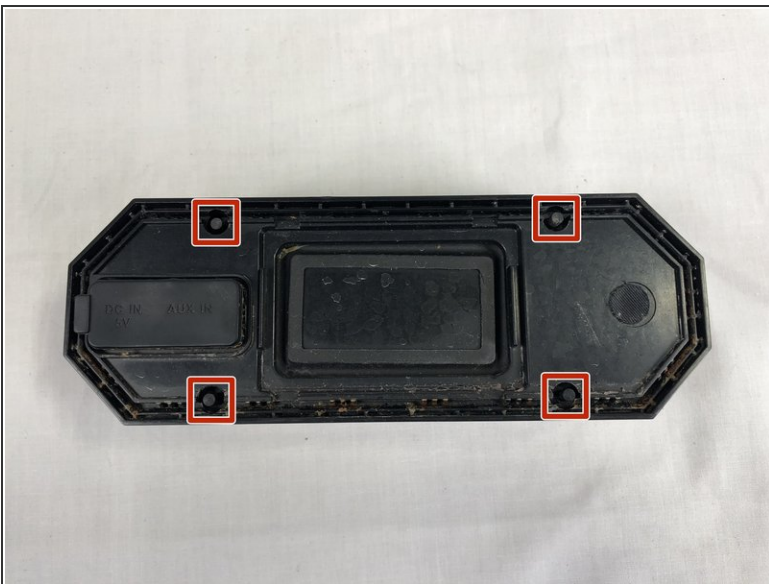
## Step 5



- Pry off the wire mesh on both sides using a metal spudger.

⚠ Be gentle to avoid bending the mesh.

## Step 6



- Using tweezers, remove the four rubber stoppers in each corner of the rear panel.



## Step 7



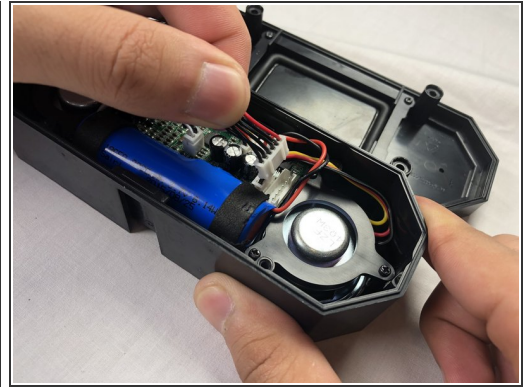
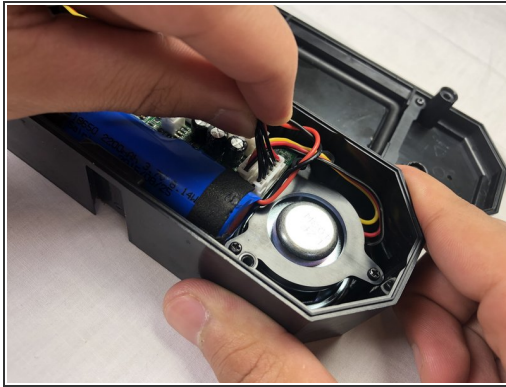
- Remove the four 13.7mm Phillips #1 screws located underneath the rubber stoppers.

## Step 8



- Pull the case apart to access the interior components.

## Step 9



- To remove the back panel, gently pull out its wire harness.

To reassemble your device, follow these instructions in reverse order.