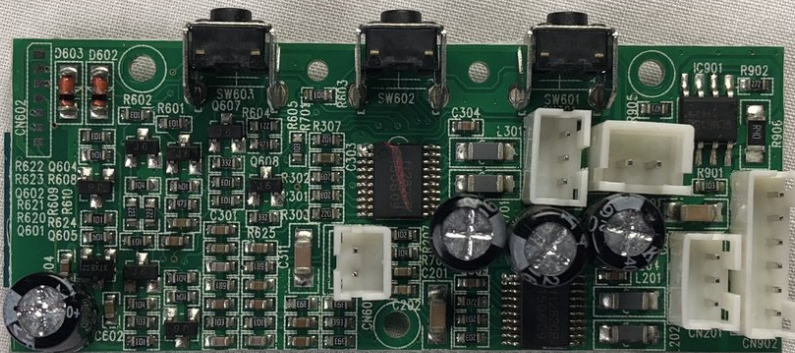




Altec Lansing Mini Lifejacket 2 Motherboard Replacement

This step-by-step guide will show you how to replace the motherboard on your Altec Lansing Mini Lifejacket 2.

Written By: Stephen Albrecht



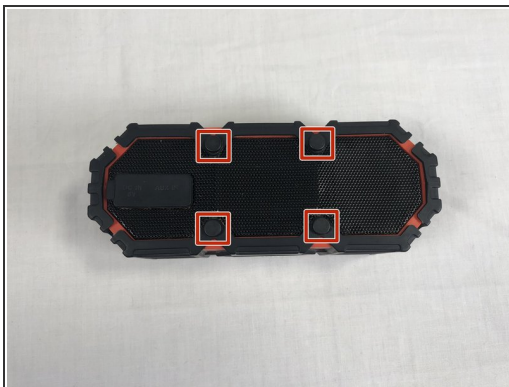
INTRODUCTION

Use this guide to replace the motherboard in your Altec Lansing Mini Lifejacket 2 if the bluetooth chip, microphone, or another electronic component has failed.

TOOLS:

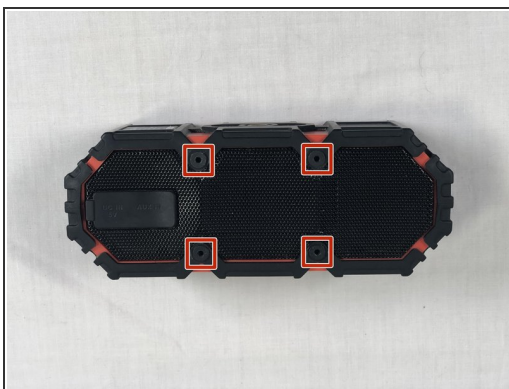
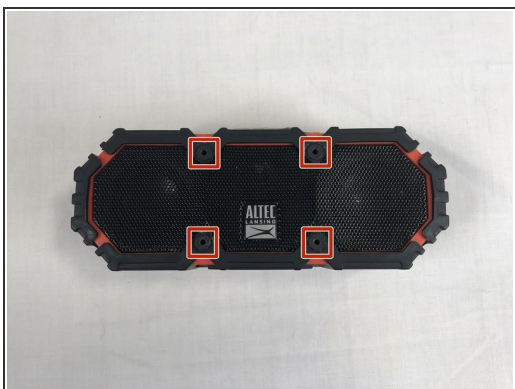
- [Phillips #2 Screwdriver](#) (1)
 - [Phillips #1 Screwdriver](#) (1)
 - [Metal Spudger](#) (1)
 - [Tweezers](#) (1)
 - [Spudger](#) (1)
-

Step 1 — Back Panel



- Use the spudger to remove the eight black pins from the front and back of the wire screens.

Step 2



- Detach the eight secondary pins from the front and back of the wire mesh plates with a spudger.

 Removing the secondary pins from the rubber casing is optional.

Step 3



- Remove both black and orange layers from the speaker body.

Step 4



- Remove the single 7.8mm Phillips #2 screw from the mounting plate located under the device.
- Slide the mounting plate out to remove it.

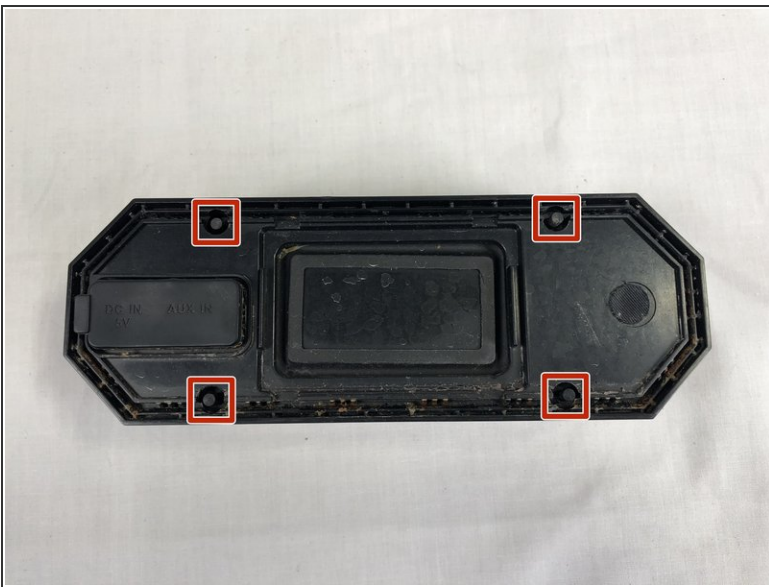
Step 5



- Pry off the wire mesh on both sides using a metal spudger.

⚠ Be gentle to avoid bending the mesh.

Step 6



- Using tweezers, remove the four rubber stoppers in each corner of the rear panel.

Step 7



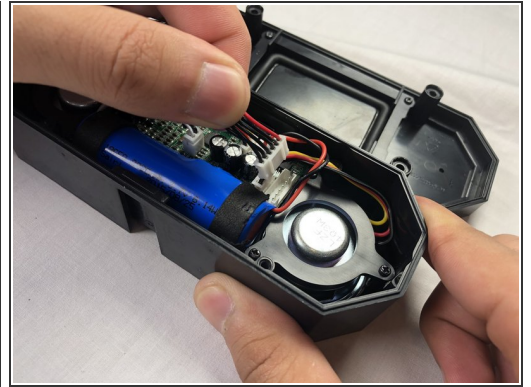
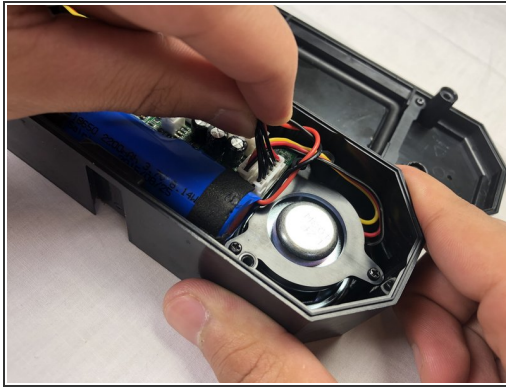
- Remove the four 13.7mm Phillips #1 screws located underneath the rubber stoppers.

Step 8



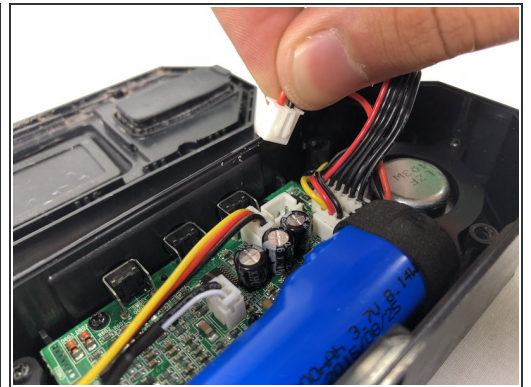
- Pull the case apart to access the interior components.

Step 9



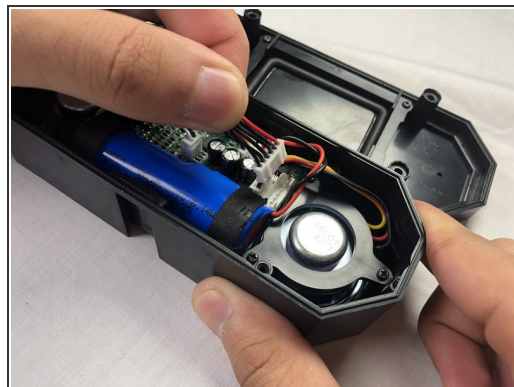
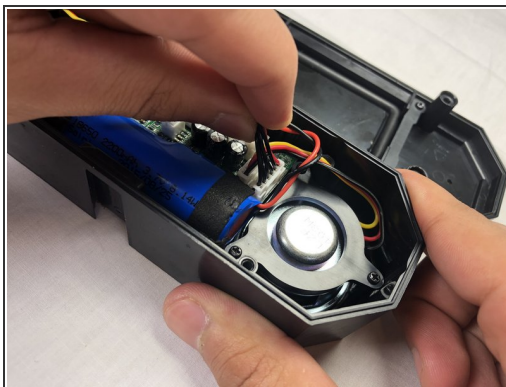
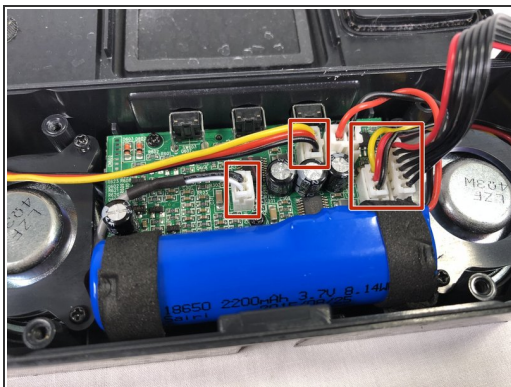
- To remove the back panel, gently pull out its wire harness.

Step 10 — Battery



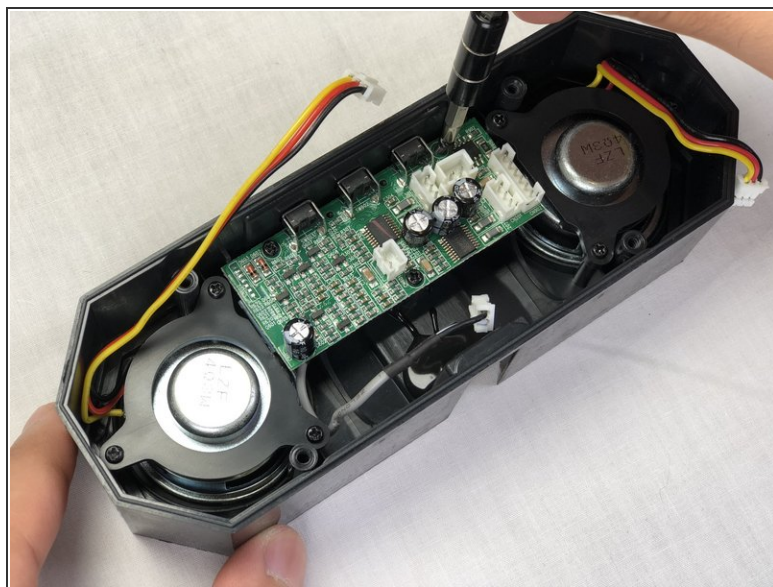
- Disconnect the battery from the motherboard.
- ⓘ The battery is not secured within the case and can be removed after detaching its wiring from the circuit board.

Step 11 — Motherboard



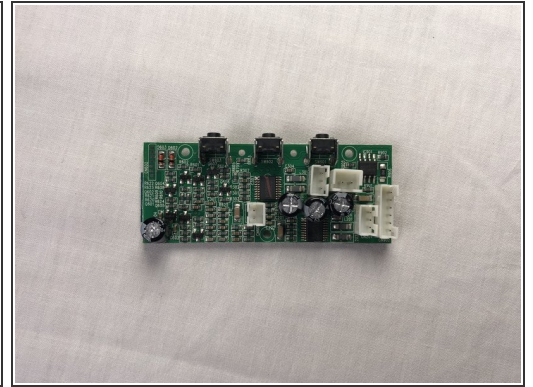
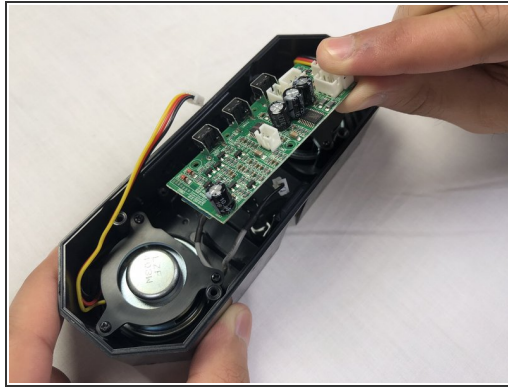
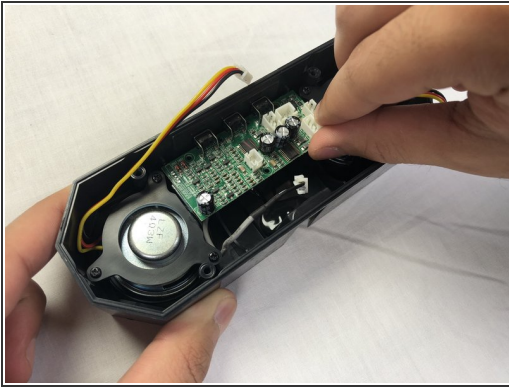
- Unplug the remaining four wire harnesses attached to the circuit board

Step 12



- Remove the three 9.1mm Phillips #1 screws located on the circuit board.

Step 13



- Remove the motherboard.

To reassemble your device, follow these instructions in reverse order.