



# Altec Lansing Mini Lifejacket 2 Speaker Replacement

This step-by-step guide will show you how to replace the speaker in your Altec Lansing Mini Lifejacket 2.

Written By: Stephen Albrecht



## INTRODUCTION

If your Altec Lansing Mini Lifejacket 2's speaker is damaged or faulty, use the following step-by-step guide to replace it. This guide applies to both the speakers.

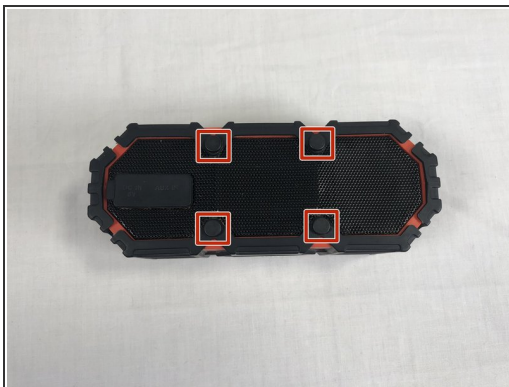


### TOOLS:

- [Phillips #2 Screwdriver](#) (1)
  - [Phillips #1 Screwdriver](#) (1)
  - [Metal Spudger](#) (1)
  - [Tweezers](#) (1)
  - [Spudger](#) (1)
-

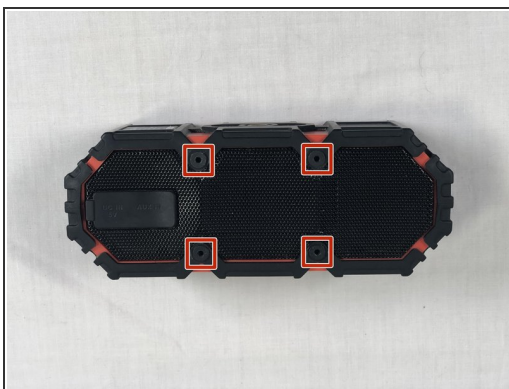
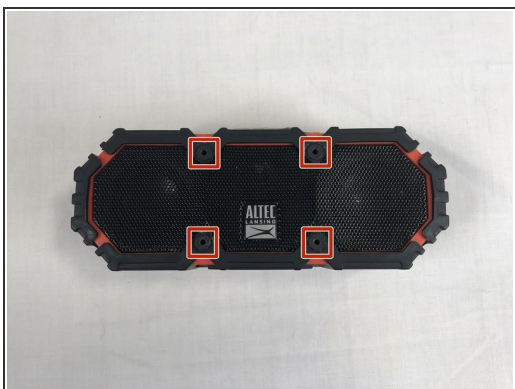


## Step 1 — Back Panel




- Use the spudger to remove the eight black pins from the front and back of the wire screens.

## Step 2



- Detach the eight secondary pins from the front and back of the wire mesh plates with a spudger.

 Removing the secondary pins from the rubber casing is optional.

### Step 3



- Remove both black and orange layers from the speaker body.

### Step 4



- Remove the single 7.8mm Phillips #2 screw from the mounting plate located under the device.
- Slide the mounting plate out to remove it.



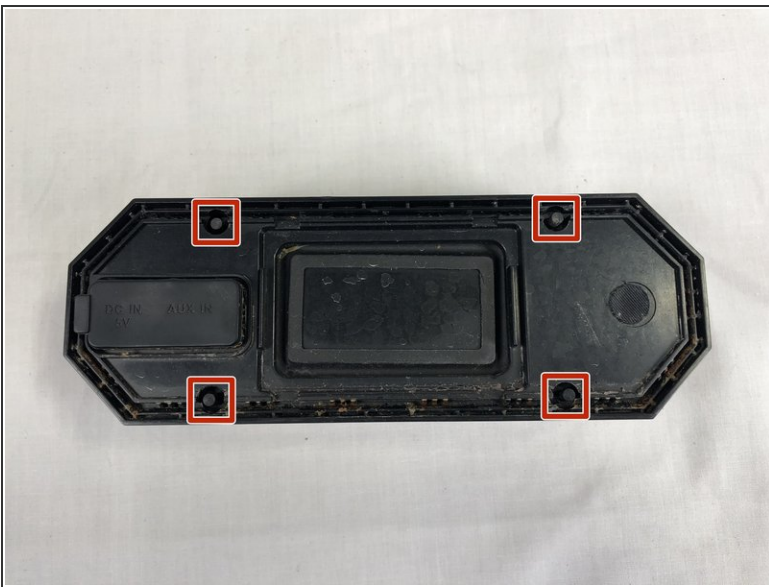
## Step 5



- Pry off the wire mesh on both sides using a metal spudger.

⚠ Be gentle to avoid bending the mesh.

## Step 6



- Using tweezers, remove the four rubber stoppers in each corner of the rear panel.

## Step 7



- Remove the four 13.7mm Phillips #1 screws located underneath the rubber stoppers.

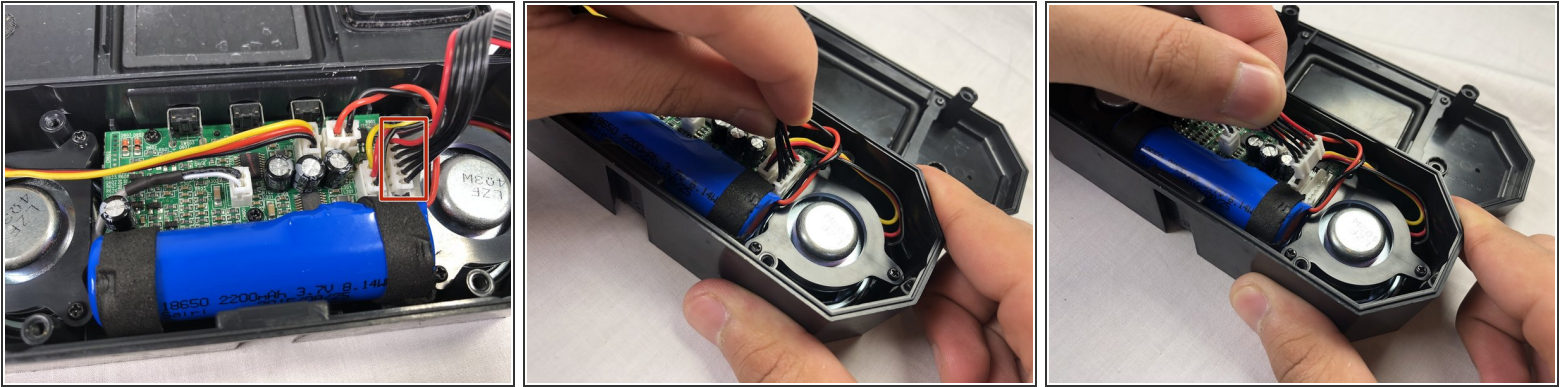
## Step 8



- Pull the case apart to access the interior components.

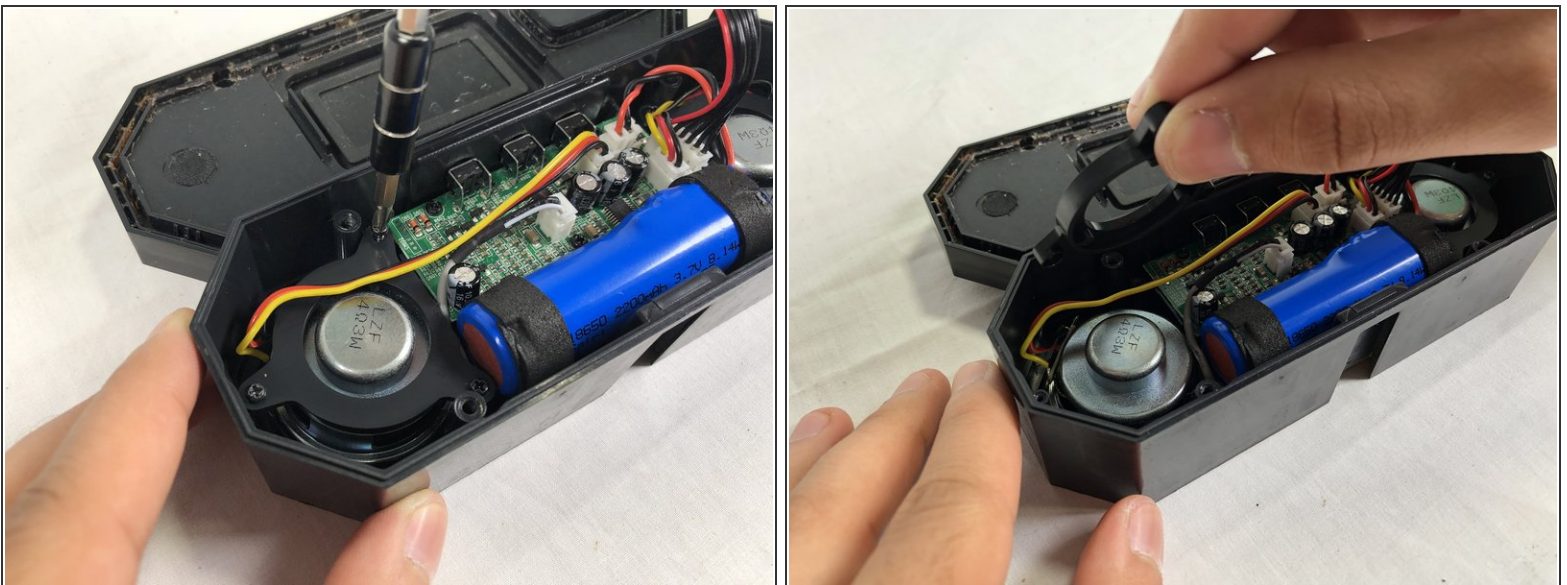


## Step 9



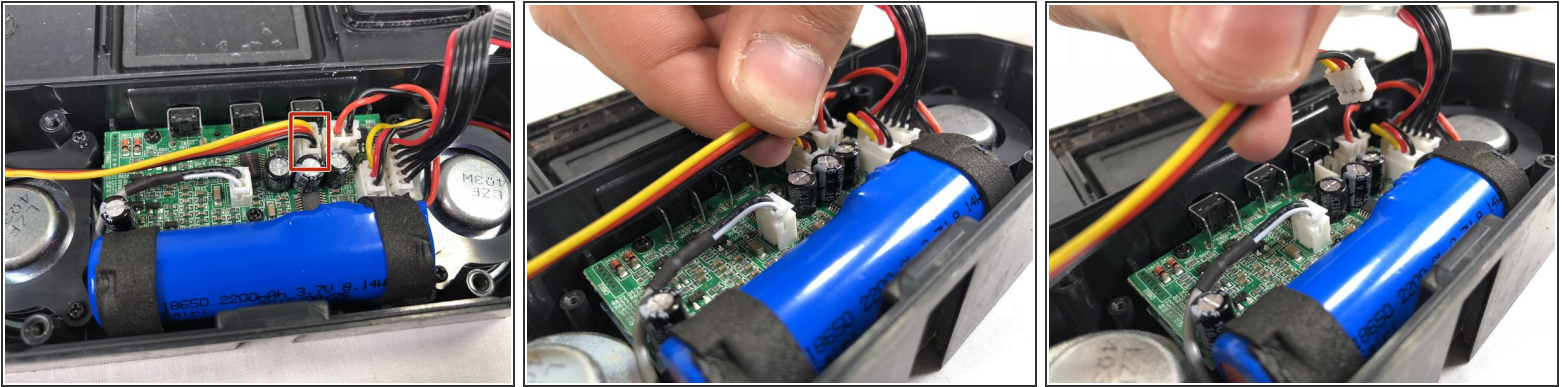
- To remove the back panel, gently pull out its wire harness.

## Step 10 — Speaker



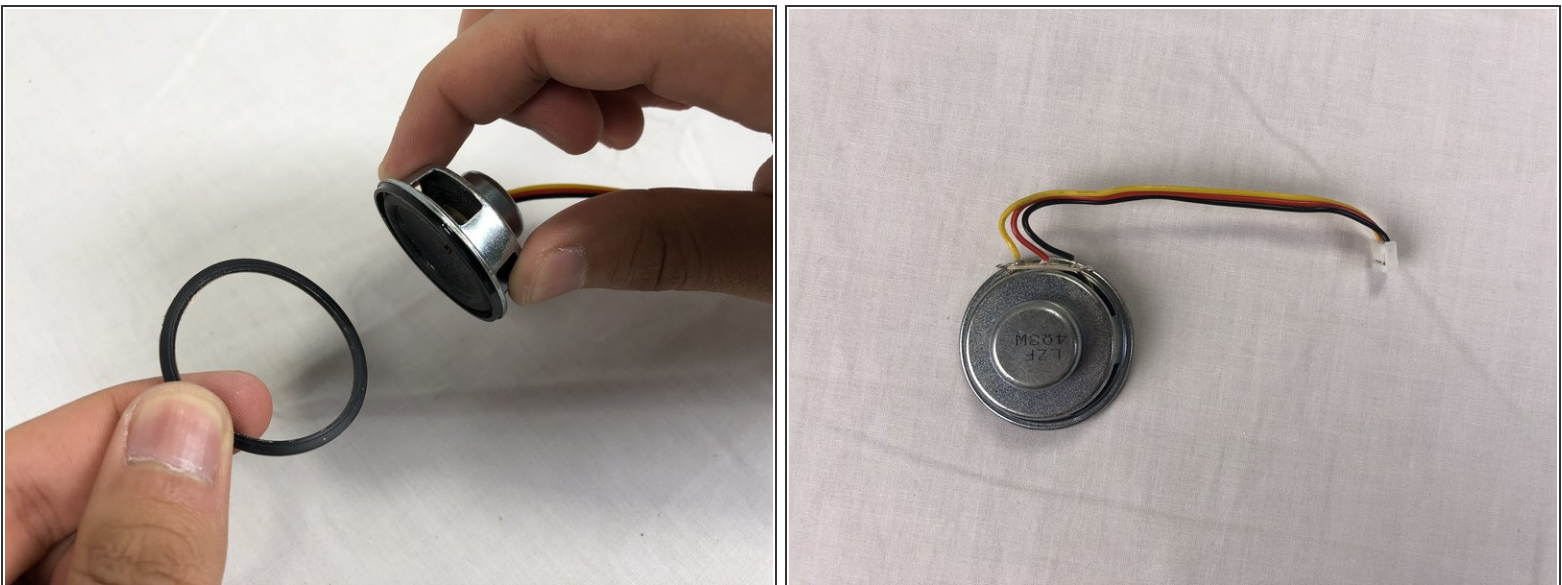
- Remove the three 9.3 mm Phillips #1 screws on the speaker cover.

## Step 11



- To remove the speaker, gently pull out the its wire harness.

## Step 12



- Remove the rubber ring from the rim of the speaker.
- ⓘ This ring helps keep water from entering the device. Be careful to position it correctly during reassembly.

To reassemble your device, follow these instructions in reverse order.