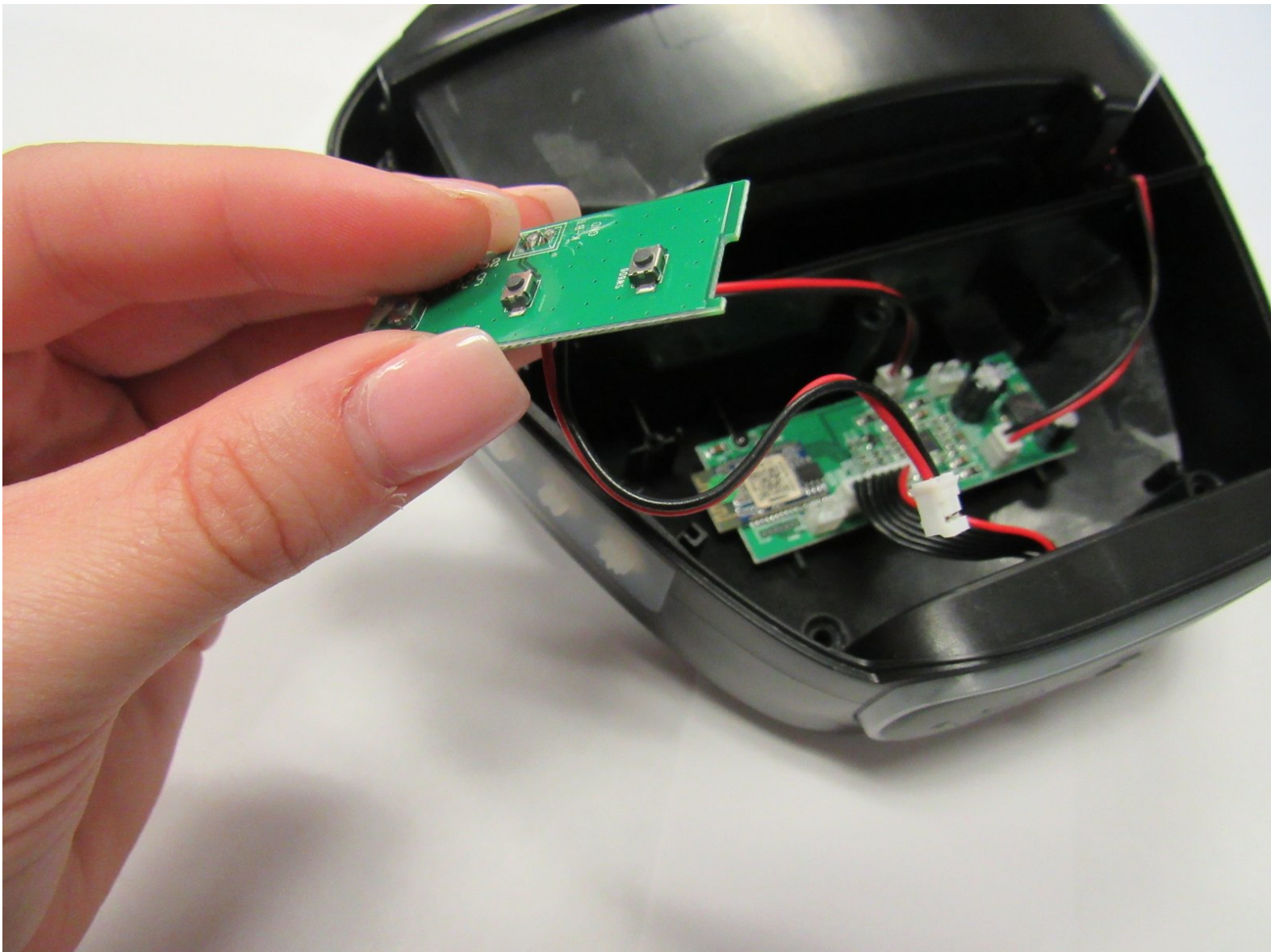




# Altec Lansing VersA Smart Bluetooth Board Replacement

This guide will show you how to disconnect the wiring to replace the bluetooth daughterboard of your Altec Lansing VersA Smart.

Written By: Rachael Hopp



---

## INTRODUCTION

If you are having issues with Bluetooth connection or powering up your device, this guide will show you how to remove and replace the daughterboard that connects to the Bluetooth and power buttons.

---

### TOOLS:

- [4mm Nut Driver](#) (1)
  - [iFixit Opening Tools](#) (1)
  - [Phillips #1 Screwdriver](#) (1)
  - [Magnetic Project Mat](#) (1)
-

## Step 1 — External Panels



- Remove external rubber cover.

## Step 2



- Use blue plastic opening tool to remove the external speaker face by placing it in the slight opening at the bottom.
- Use a lever motion, push the tool down, lifting the speaker face.
- Use fingers to grip and remove speaker face.
- Repeat on reverse side to remove the second speaker face.



### Step 3



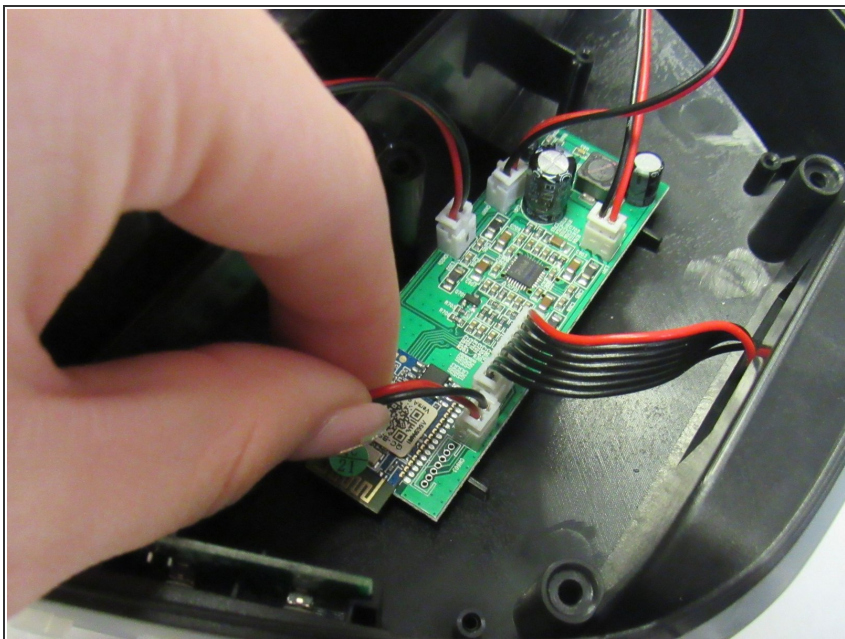
- Orient speaker so volume buttons are facing away from you, and Bluetooth and power buttons are on the left-hand side.
- Remove the seven 14mm screws using the Phillips #1 screwdriver.

### Step 4



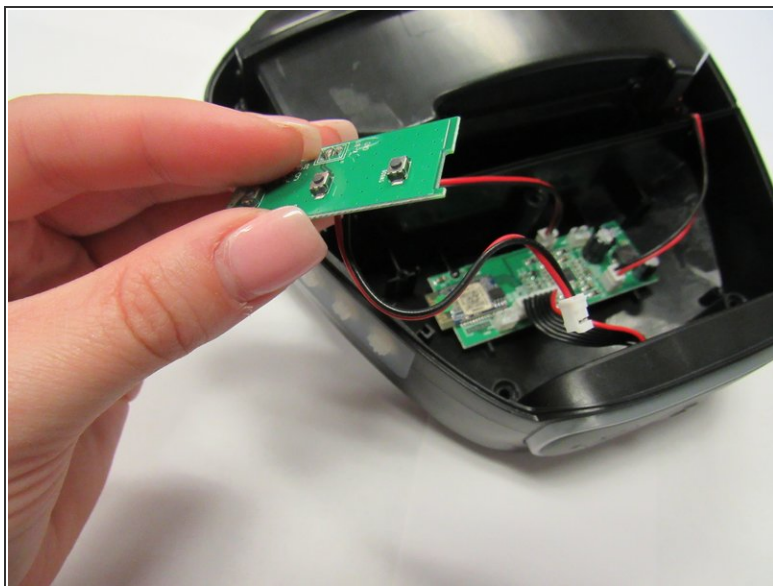
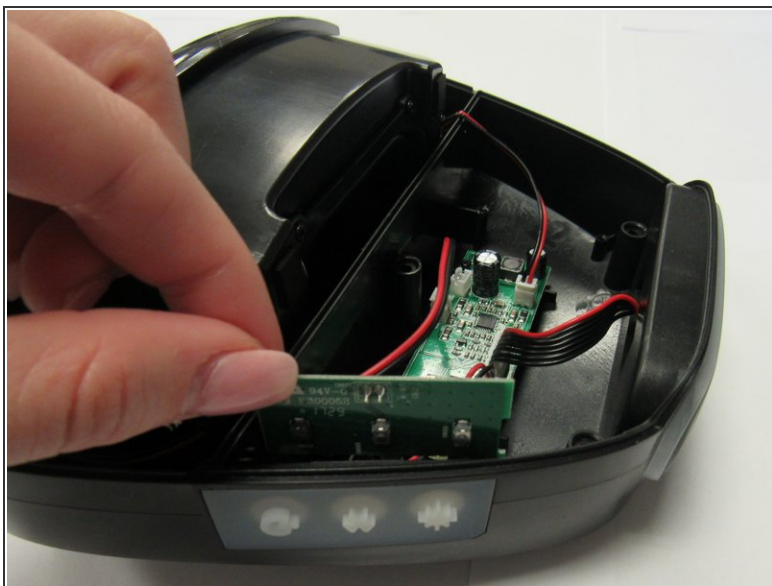
- Reorient speaker so Bluetooth and power buttons are now on the right-hand side.
- Separate the two panels along the crease.
  - Blue plastic opening tool may be needed to separate panels.
- Remove the panel with no buttons to expose internal area of the device.
- ★ Motherboard and all internal components are under this panel.

## Step 5 — Bluetooth Board



- Detach the wiring piece, located in the upper right corner of the motherboard.

## Step 6



- Remove the daughterboard piece from its designated slot, located to the right of the motherboard.

To reassemble your device, follow these instructions in reverse order.