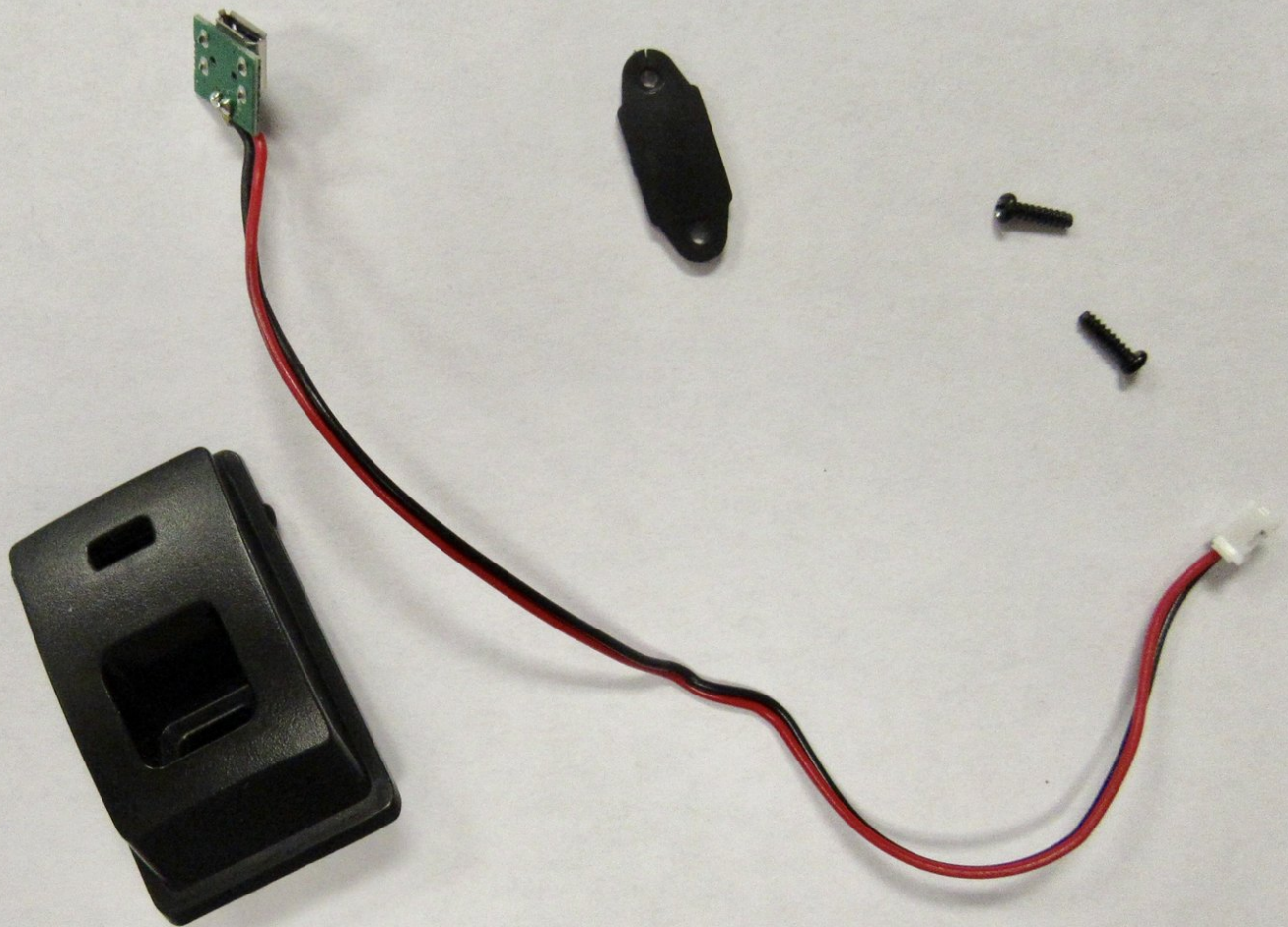




Altec Lansing VersA Smart Micro USB Port Replacement

This guide will show you how to detach the Micro USB port with daughterboard of your Altec Lansing VersA Smart.

Written By: Rachael Hopp



INTRODUCTION

If you are having an issue with your device not charging, access and replace the Micro USB charging port using this guide.

TOOLS:

- [Magnetic Project Mat](#) (1)
 - [4mm Nut Driver](#) (1)
 - [iFixit Opening Tools](#) (1)
 - [Phillips #1 Screwdriver](#) (1)
 - [Phillips #0 Screwdriver](#) (1)
 - [Spudger](#) (1)
-

Step 1 — External Panels



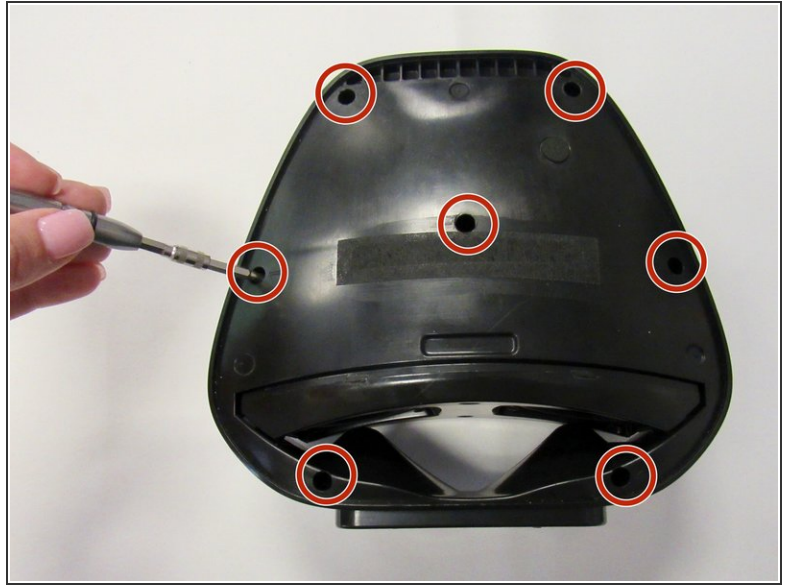
- Remove external rubber cover.

Step 2



- Use blue plastic opening tool to remove the external speaker face by placing it in the slight opening at the bottom.
- Use a lever motion, push the tool down, lifting the speaker face.
- Use fingers to grip and remove speaker face.
- Repeat on reverse side to remove the second speaker face.

Step 3



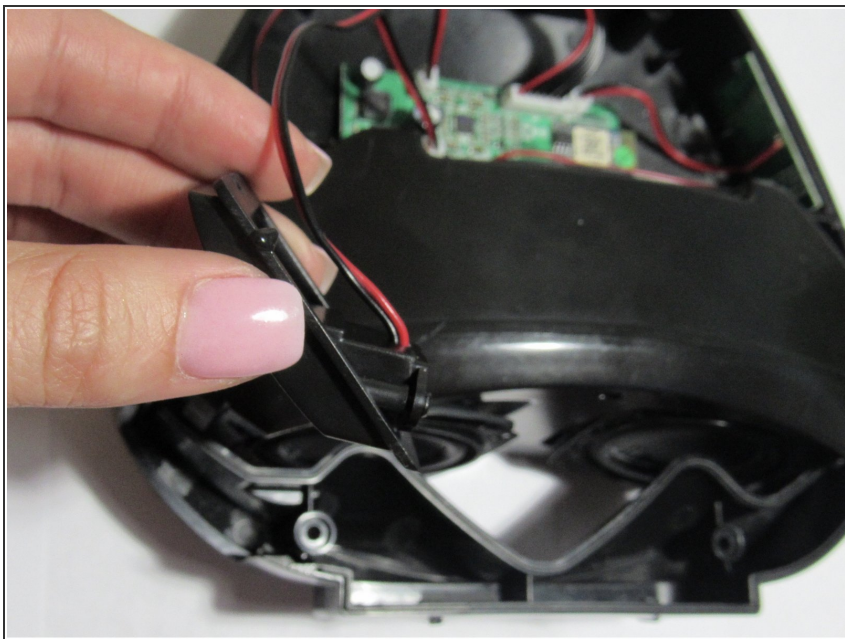
- Orient speaker so volume buttons are facing away from you, and Bluetooth and power buttons are on the left-hand side.
- Remove the seven 14mm screws using the Phillips #1 screwdriver.

Step 4



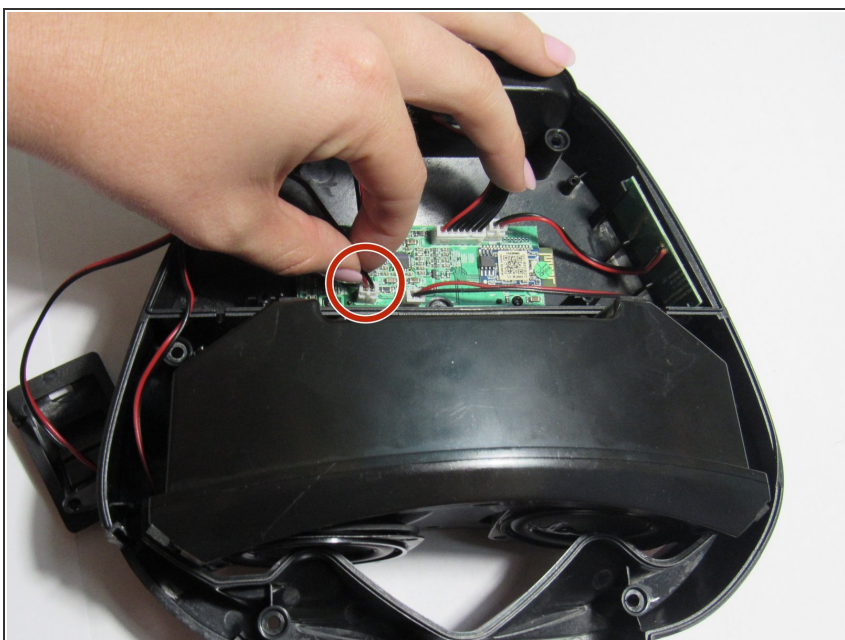
- Reorient speaker so Bluetooth and power buttons are now on the right-hand side.
- Separate the two panels along the crease.
 - Blue plastic opening tool may be needed to separate panels.
- Remove the panel with no buttons to expose internal area of the device.
- ★ Motherboard and all internal components are under this panel.

Step 5 — Micro USB Port



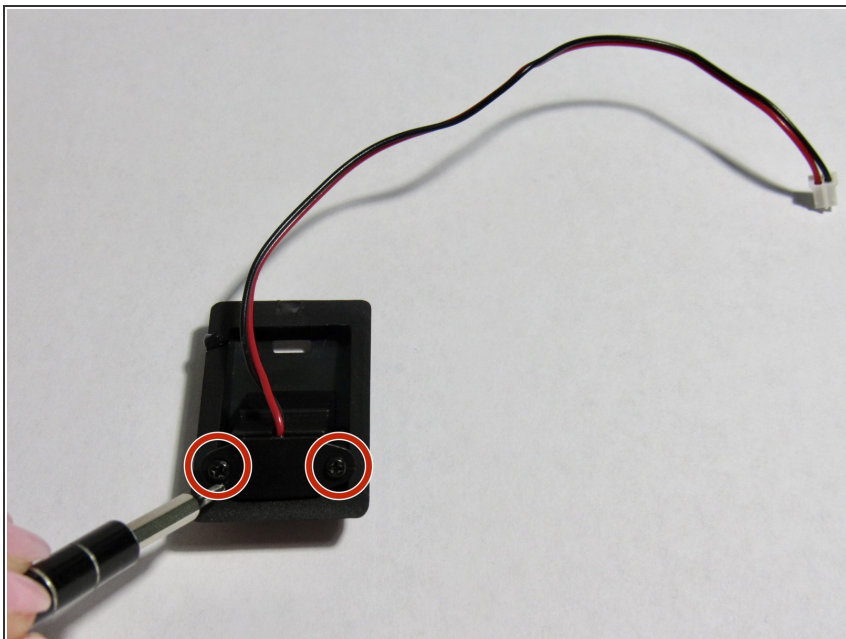
- Remove the plastic piece containing the Micro USB port from its designated slot, found below the speakers.

Step 6



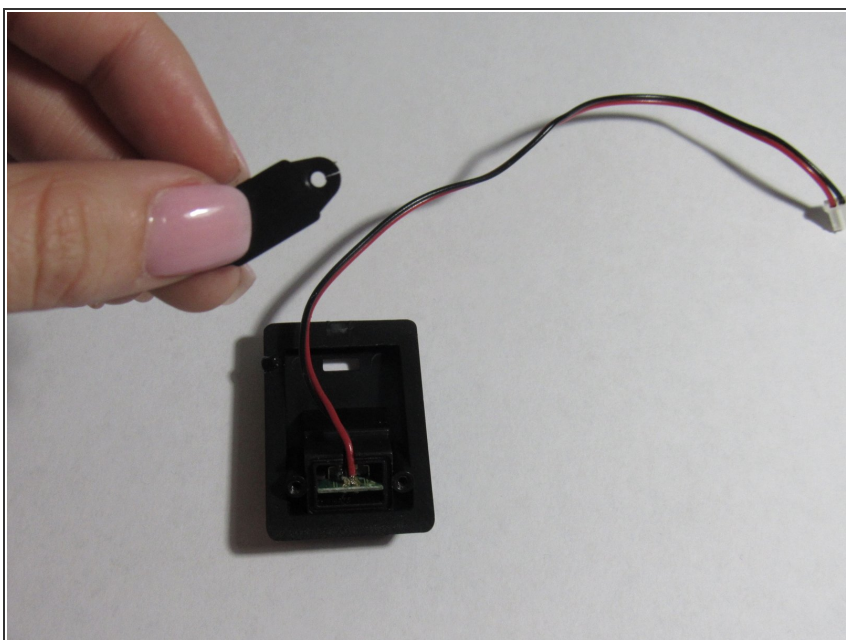
- Detach both the wires connecting the Micro USB piece to the motherboard.

Step 7



- Remove the two 10mm screws using the Phillips #0 screwdriver.

Step 8



- Remove the small black plastic piece that was held in place by the two 10 mm screws and covers the Micro USB port.

Step 9



- Use the black plastic spudger to lightly push the Micro USB piece out of the external plastic piece.

To reassemble your device, follow these instructions in reverse order.