



Altec Lansing inMotion iM9 Case Opening Replacement

Prerequisite Only

Written By: Johnson Zhou



INTRODUCTION

Prerequisite Only



TOOLS:

- [Phillips #1 Screwdriver](#) (1)
 - [Spudger](#) (1)
-

Step 1 — Battery



- Gently push down on the two tabs at the top of the battery door.
- While holding them down, slowly pull the door towards you.

Step 2



- Once the door is open, use your hand to pull out the four batteries.

Step 3 — Case Opening



- Gently pry open the silver plastic lining of the iPod dock using the plastic spudger.
- It is best to start from the top or bottom, then work your way around if it has not popped out yet.
- Remove the silver lining.

Step 4



- Pry open the metal mesh by working the plastic spudger around the inside of the mesh.
- Once loose, lift up the metal mesh.

Step 5



- Remove the fourteen 30mm screws with Phillips #1 Screwdriver.
- Remove the 7mm screw with the Phillips #1 Screwdriver.

Step 6



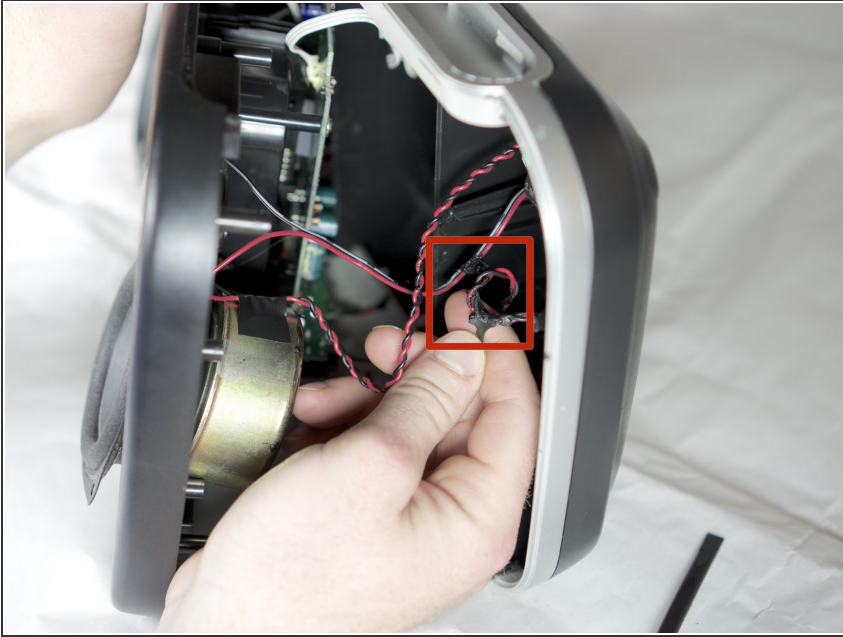
- Carefully separate the front and back case plates at a corner of the speaker.
- ⚠ Lots of cables are still connected, so be very gentle when separating case plates.

Step 7



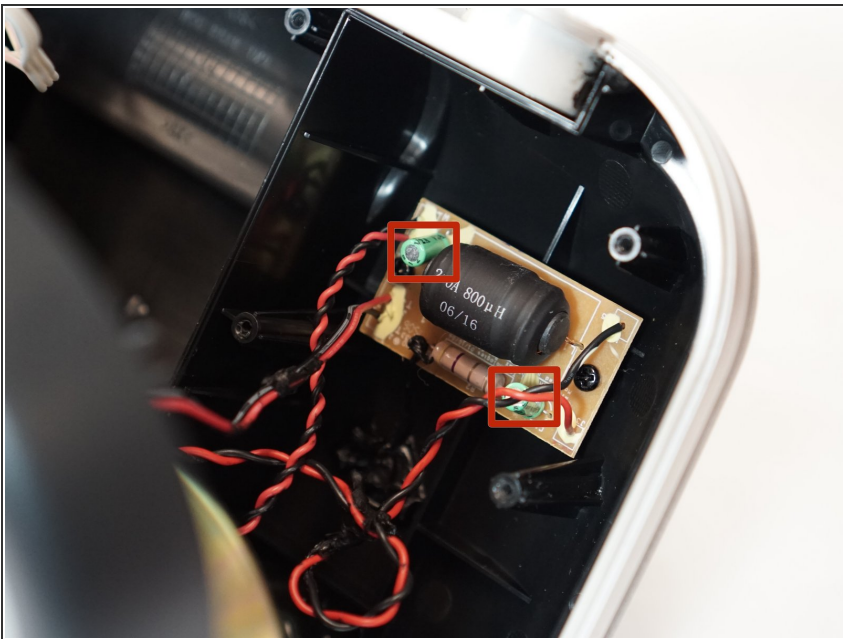
- Guide the white button cables through the hole on the top of speaker case.

Step 8



- Use your fingers to peel the glue off of the red and black cables.

Step 9



- ⚠ Careful not to touch the green capacitors or you might shock yourself.

To reassemble your device, follow these instructions in reverse order.