



Altec Lansing inMotion iM9 Volume and Power Buttons Replacement

Use this guide to replace the volume and power buttons on top of the Altec Lansing inMotion iM9.

Written By: Ben Toland



INTRODUCTION

In this guide, you will pry off the control panel to unscrew and desolder the circuit boards. If you are not comfortable with soldering, you can use this [guide](#).



TOOLS:

- [Metal Spudger](#) (1)
- [Phillips #1 Screwdriver](#) (1)
- [Soldering Iron](#) (1)



PARTS:

- [Desoldering Braid](#) (1)

Step 1 — Battery



- Gently push down on the two tabs at the top of the battery door.
- While holding them down, slowly pull the door towards you.

Step 2



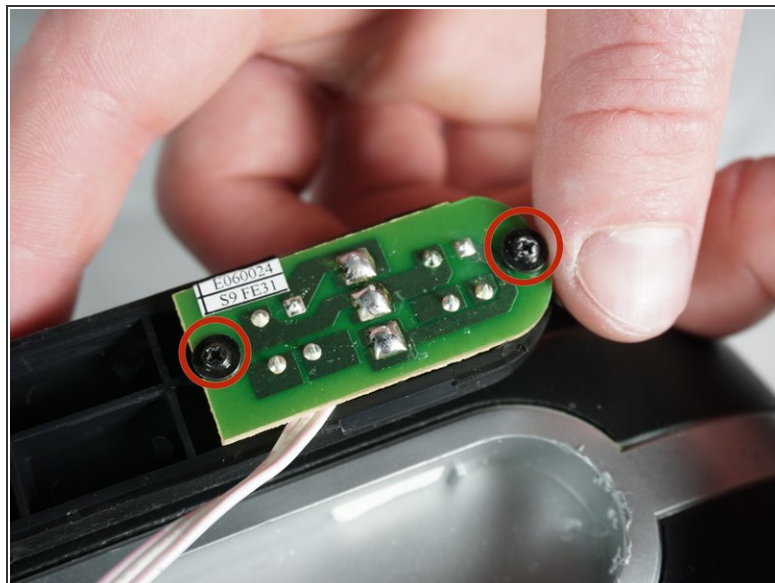
- Once the door is open, use your hand to pull out the four batteries.

Step 3 — Volume and Power Buttons



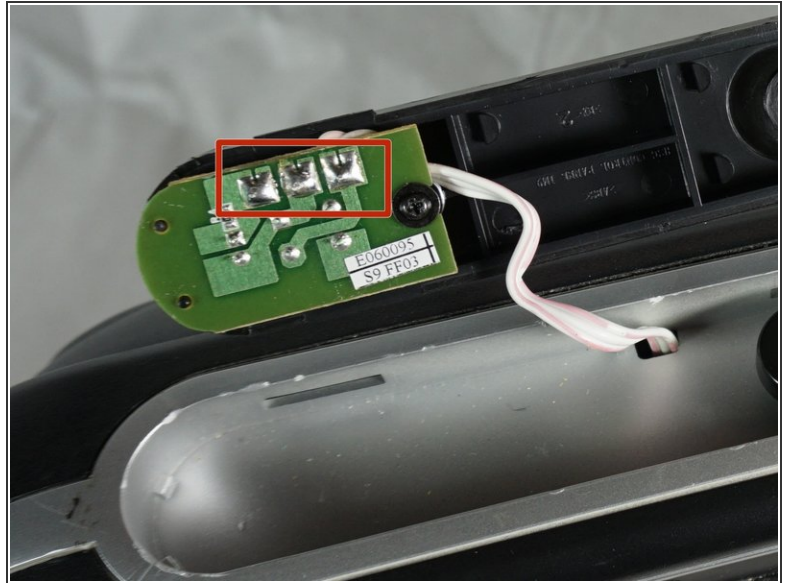
- Pry off the control panel on top of the speaker using the metal spudger. You may need to use a lot of force.
- ⓘ Start in the middle and work your way around the perimeter.


Step 4



- Using a Phillips #1 screwdriver, remove the two 7mm screws that hold the volume button circuit board to the control panel.
- Also remove the single 7mm screw from the power button circuit board on the opposite side.
- ⓘ There will be a little plastic piece under the eject button that you can just remove and set aside.

Step 5



- Desolder the three solder joints connecting the wires to the volume button circuit board.
 - Do the same to the power button circuit board on the other side (the board with only one screw).
 - Pull out the wires using a lot of force.
-  If you are not familiar or comfortable with soldering, use this [guide](#)

To reassemble your device, follow these instructions in reverse order.