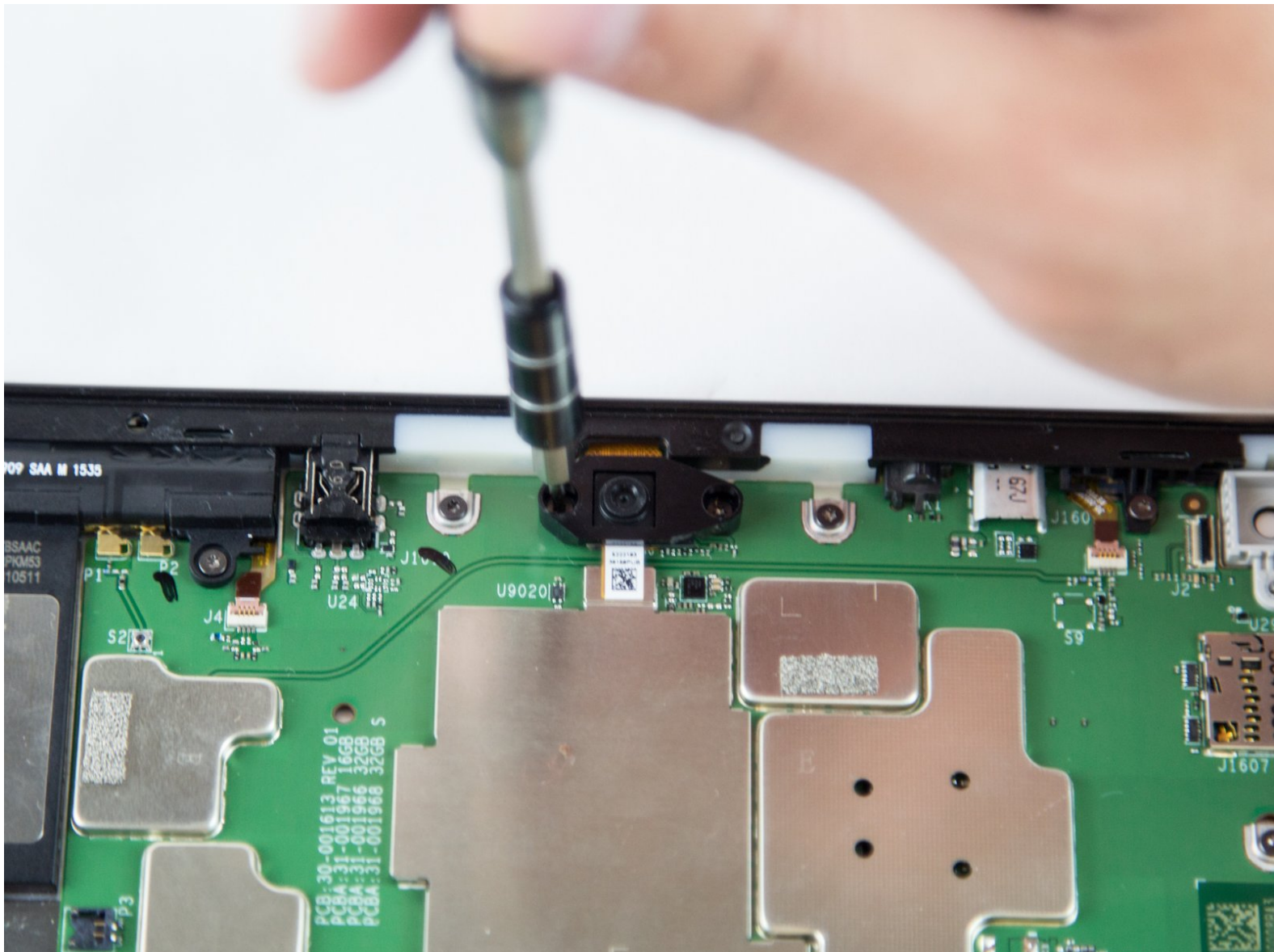




# Amazon Fire HD 10 Front Facing Camera Replacement

Follow this guide to replace your front facing camera.

Written By: Jaie Hillery



---

## INTRODUCTION

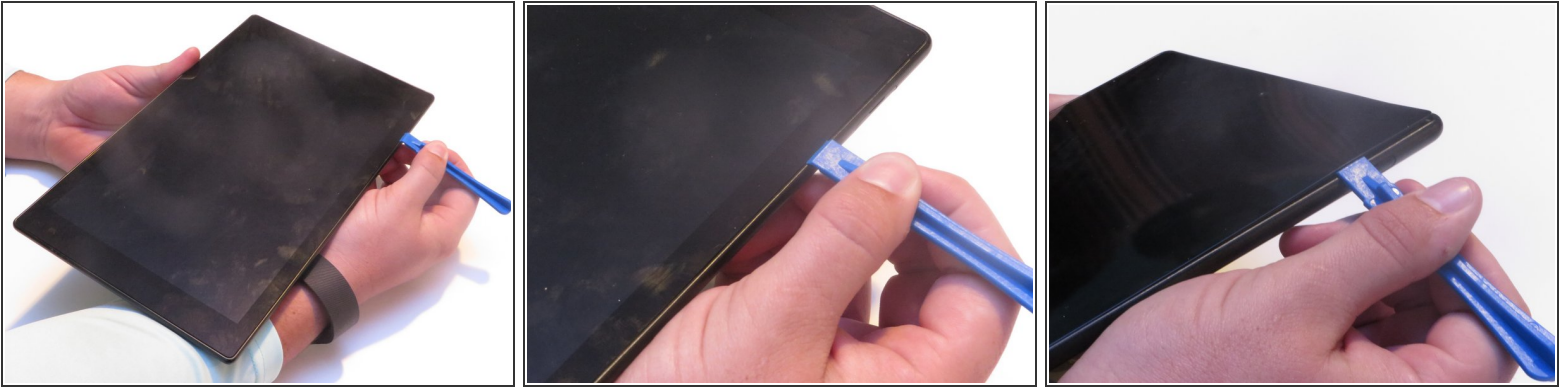
You will need to use the screen replacement guide as a prerequisite.




### TOOLS:

- [iFixit Opening Tools](#) (1)
  - [T5 Torx Screwdriver](#) (1)
-

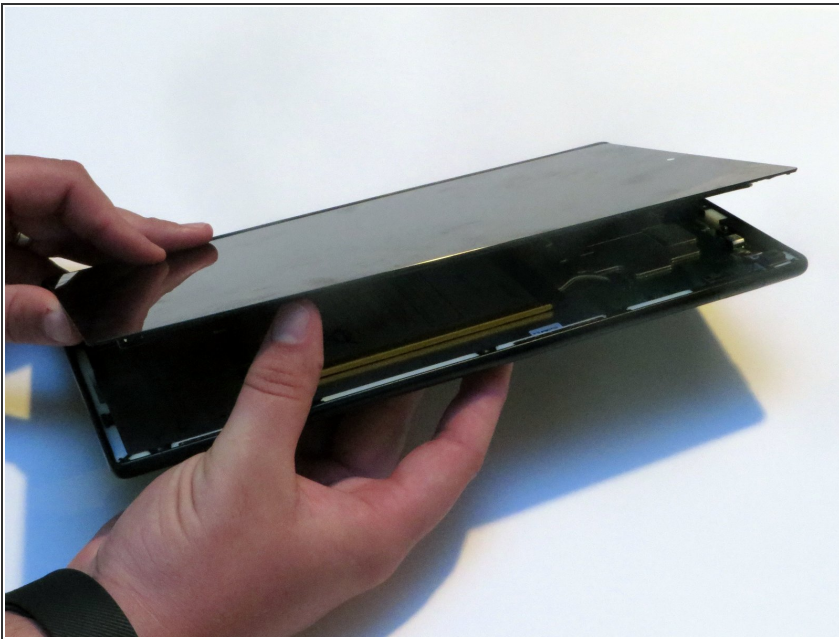
## Step 1 — Screen





 Avoid prying near bottom right hand side due to LCD Connector

- Use a plastic opening tool to pry the screen up in the right hand corner.

## Step 2

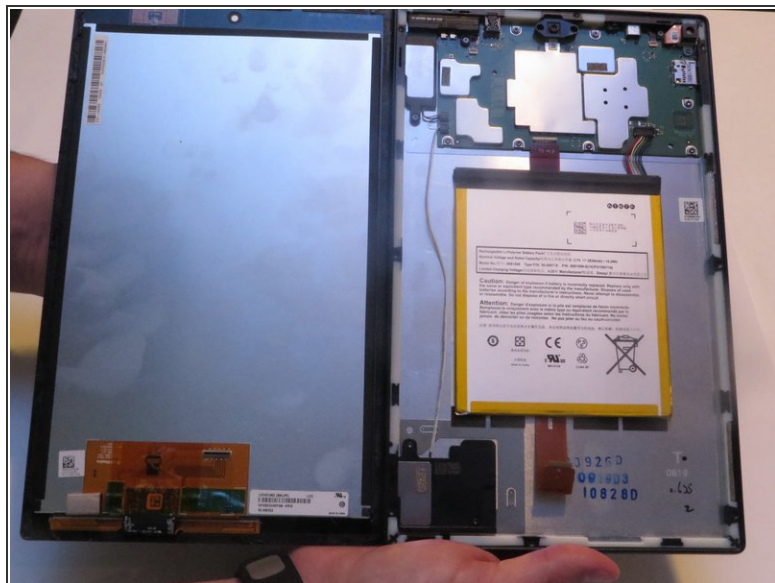


 Do not completely remove the screen yet as there is a ZIF connector connected.

- Lift the screen and digitizer from the case.
-  You may need to use some force due to the glue.



## Step 3



**i** Be mindful of the ZIF connector.

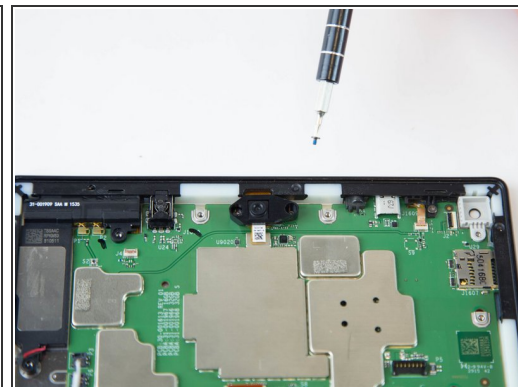
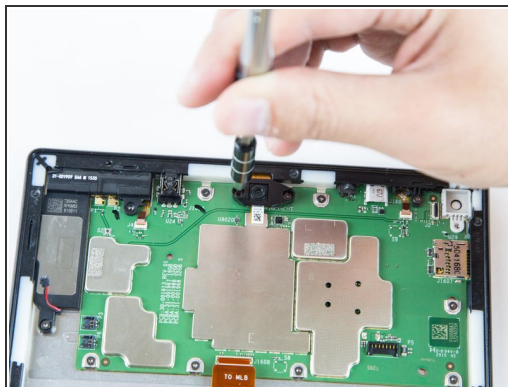
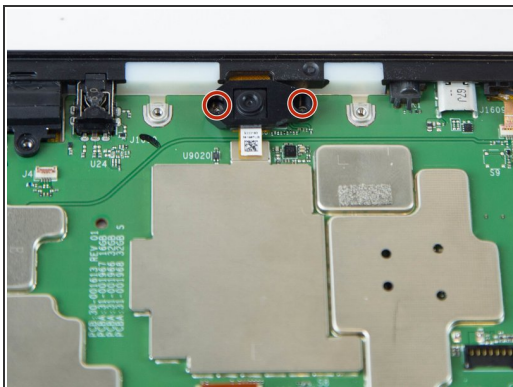
- Disconnect the ribbon connector from the digitizer side using your hands or the plastic opening tool.

## Step 4



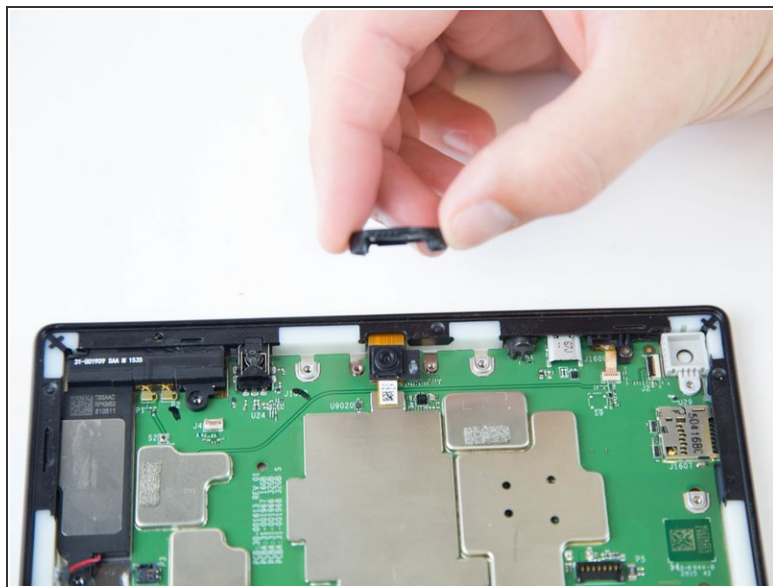
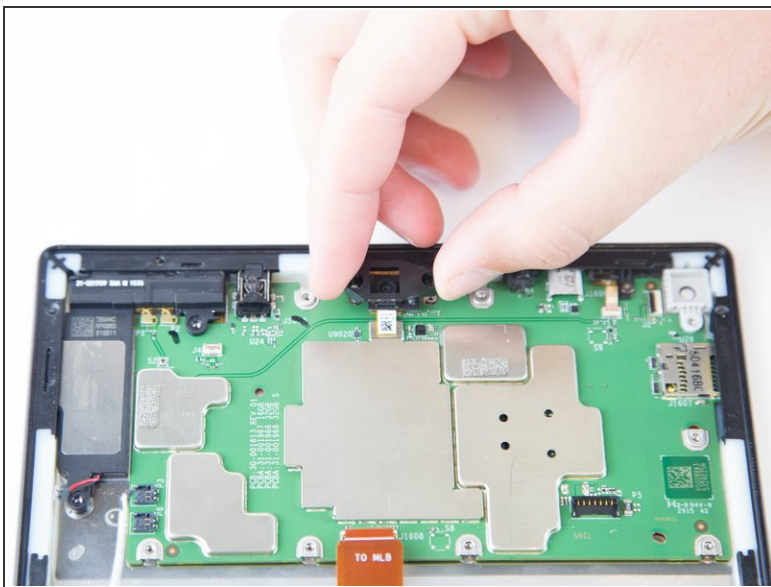
- Remove the screen and digitizer from the case completely.

## Step 5 — Front Facing Camera



- Remove the two screws from front facing camera using the T5 Torx Screwdriver.
- ⓘ Make sure you place the screws in a safe location nearby.

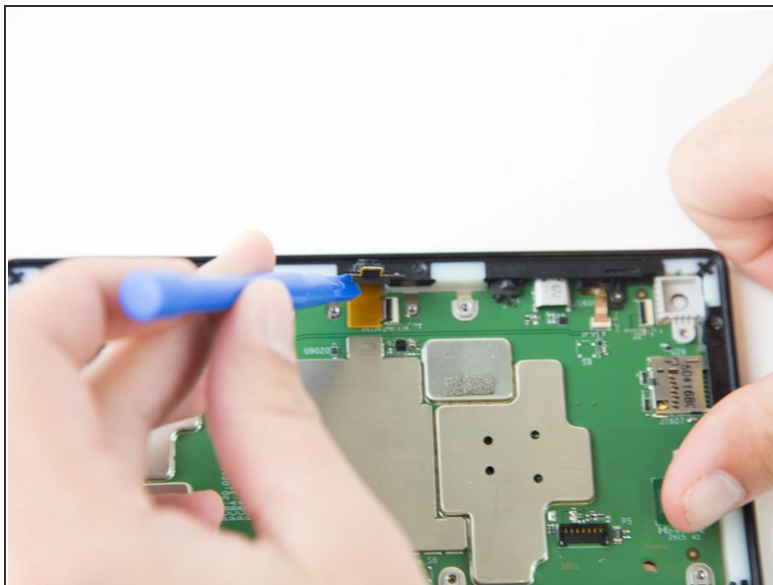
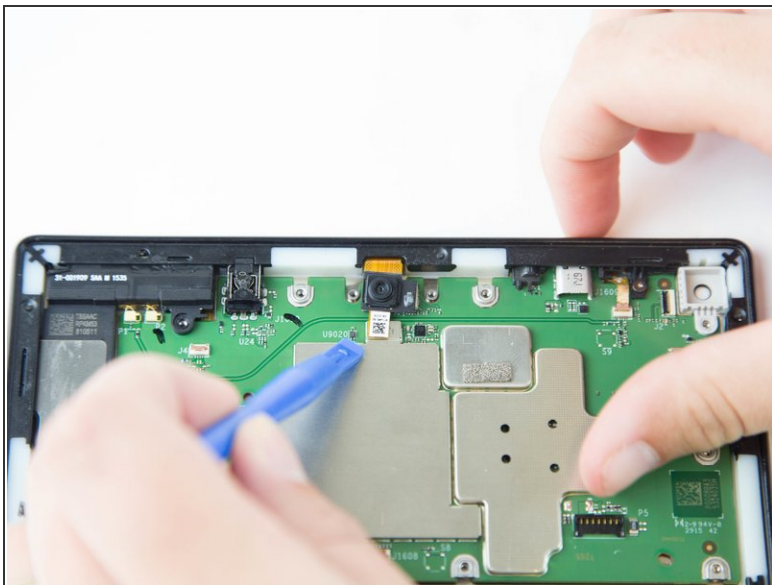
## Step 6



- Lift the black plastic cover once the screws are removed.
- Place aside for later reassembly.



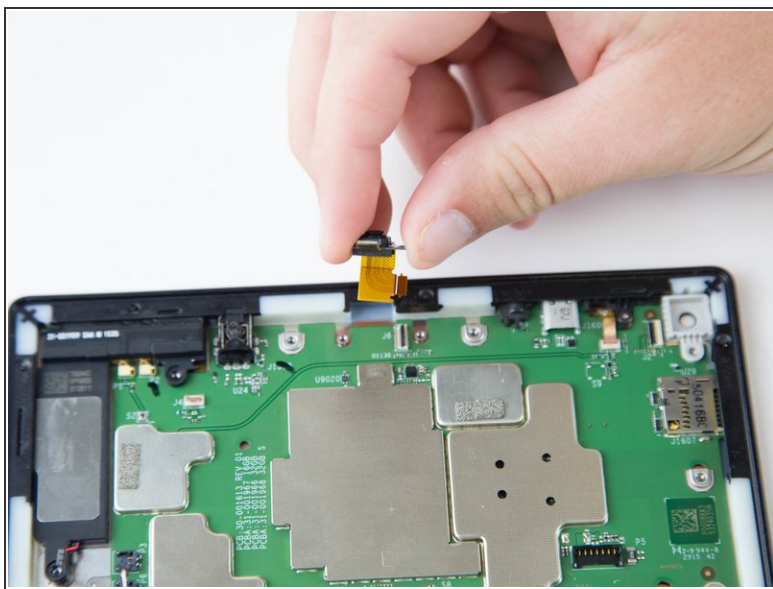
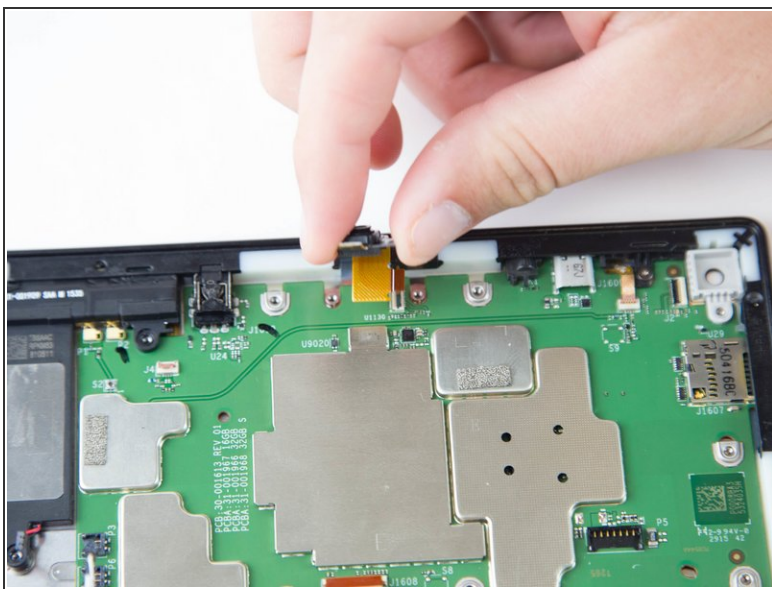
## Step 7



- Detach the connector using a plastic opening tool or spudger.

⚠ The camera is still connected to the motherboard.

## Step 8



- Grip the camera and lift up to detach the ZIF connector from the motherboard.

To reassemble your device, follow these instructions in reverse order.