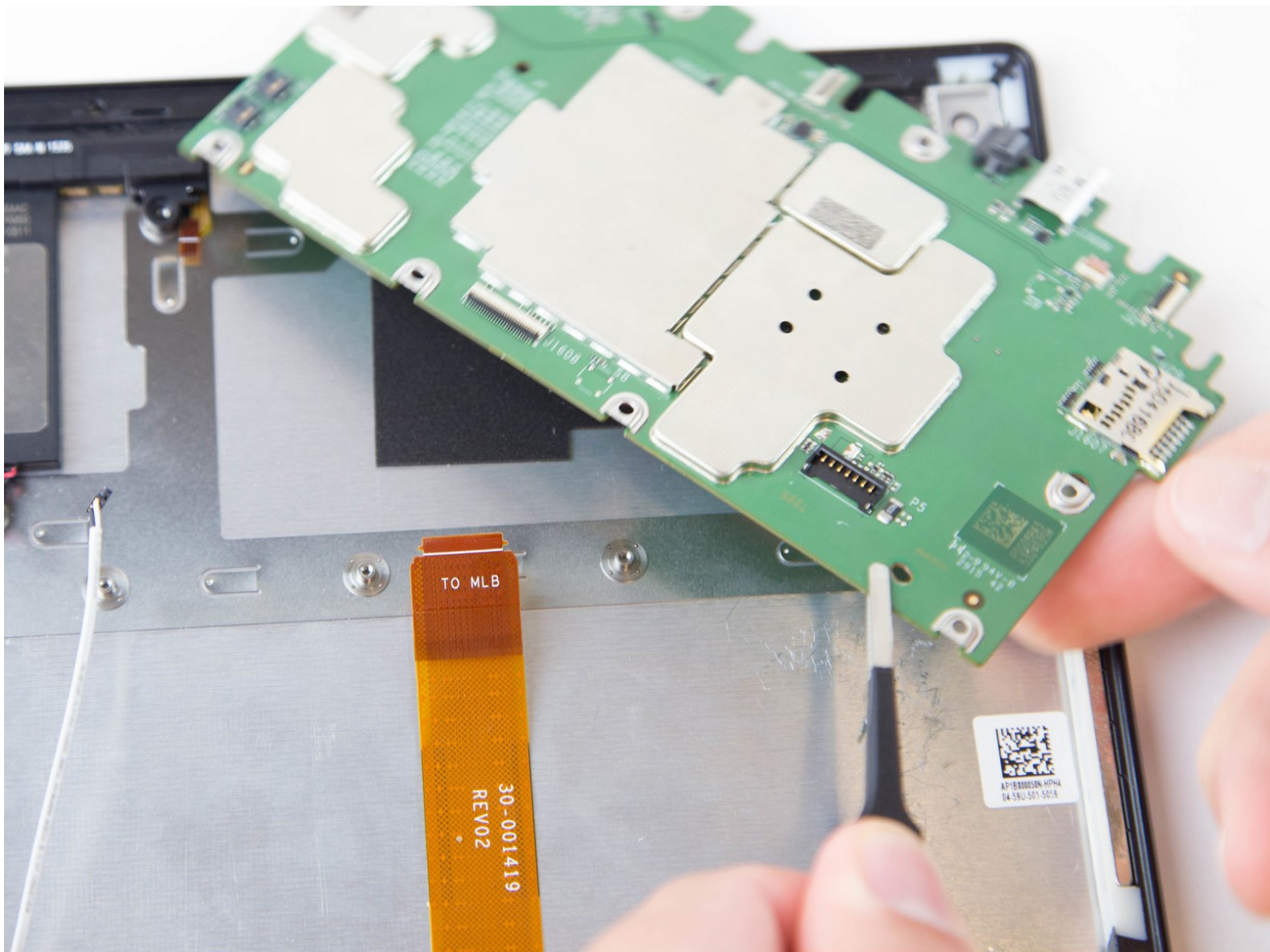




Amazon Fire HD 10 Motherboard Replacement

Replace the motherboard.

Written By: Jaie Hillery



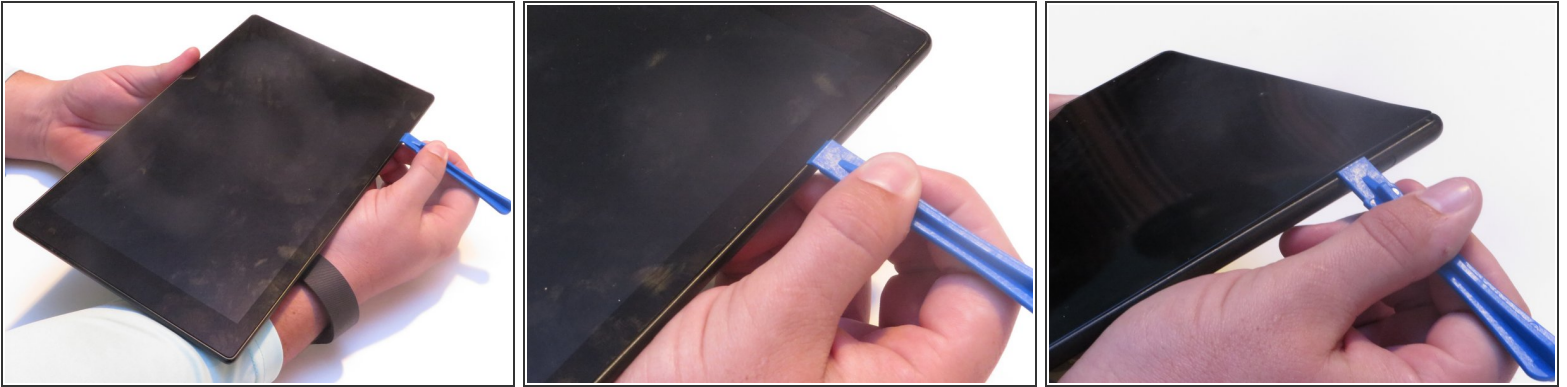
INTRODUCTION


Use this guide to replace the motherboard in your Amazon Fire HD 10.

TOOLS:

- [iFixit Opening Tools](#) (1)
 - [T5 Torx Screwdriver](#) (1)
 - [Tweezers](#) (1)
 - [Spudger](#) (1)
-

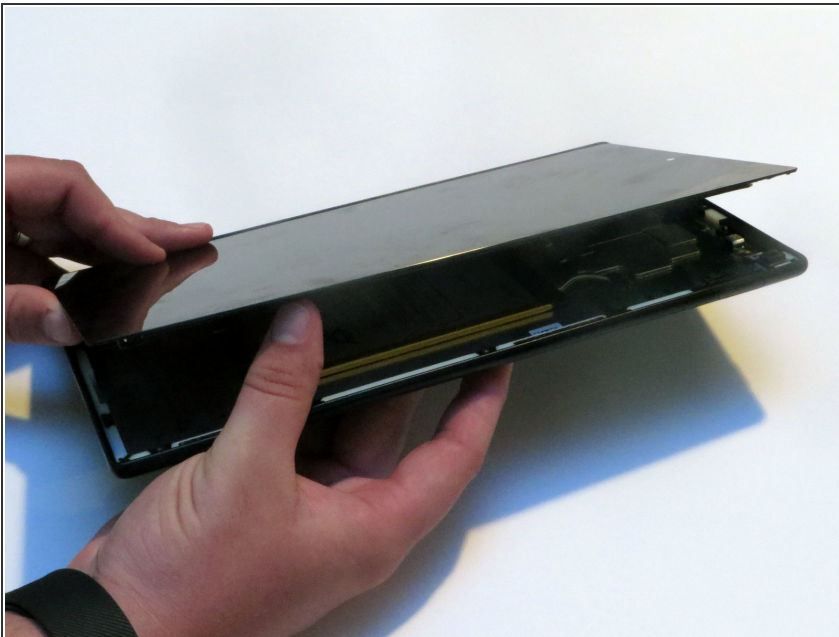
Step 1 — Screen





 Avoid prying near bottom right hand side due to LCD Connector

- Use a plastic opening tool to pry the screen up in the right hand corner.

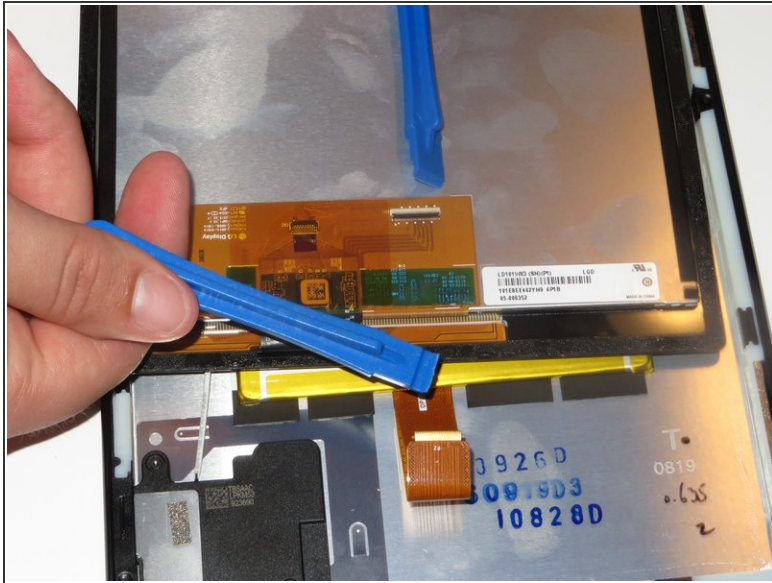
Step 2



 Do not completely remove the screen yet as there is a ZIF connector connected.

- Lift the screen and digitizer from the case.
-  You may need to use some force due to the glue.

Step 3



- ⓘ Be mindful of the ZIF connector.
- Disconnect the ribbon connector from the digitizer side using your hands or the plastic opening tool.

Step 4



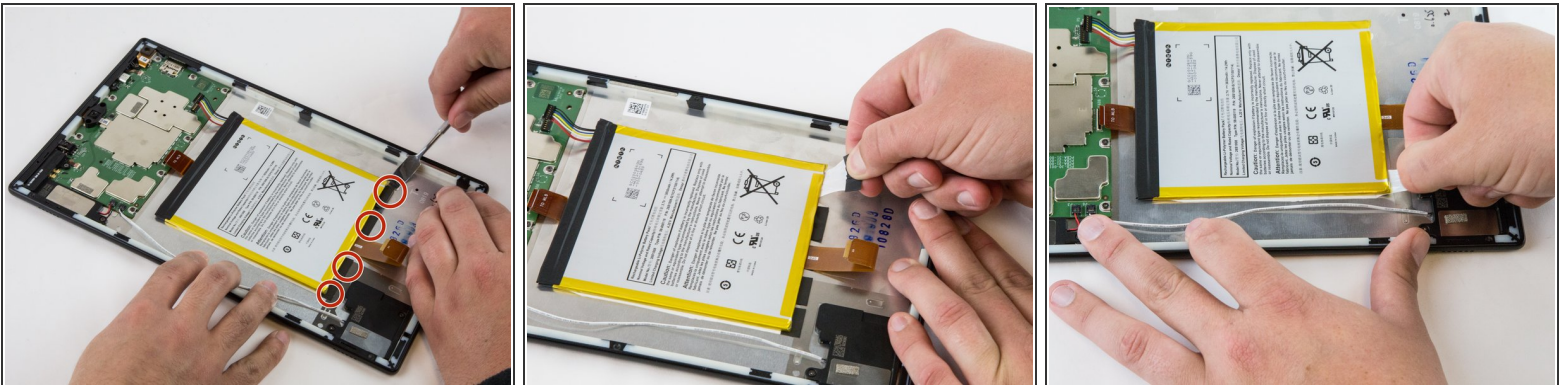
- Remove the screen and digitizer from the case completely.

Step 5 — Battery



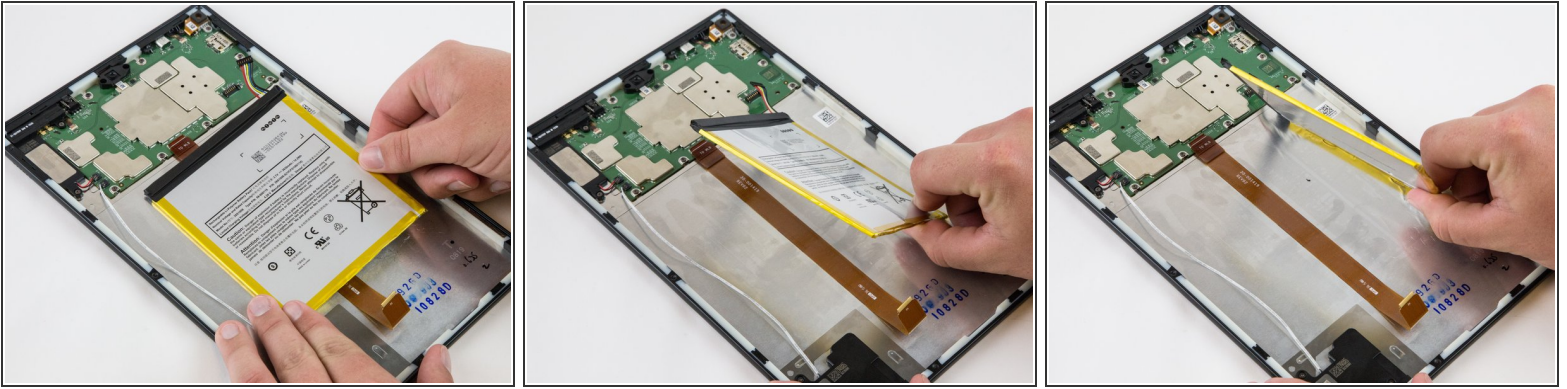
- Locate the power cable that links the battery to the motherboard.
- Carefully unplug the battery power cable to disconnect the battery from the motherboard.
- i* The third image shows what it should look like with the battery power cable is disconnected.


Step 6



- Begin by locating the double sided pull tape locations.
- !* Do not lift on the battery when doing the following step. You will bend it. It is very pliable.
- Pull the black soft tabs to release the tape's adhesion.
- i* Make sure you pull the tabs slowly and continuously away from the case until the adhesive is completely out.
- Do this to all 4 tabs until the battery is completely free of adhesion to the device's backing.

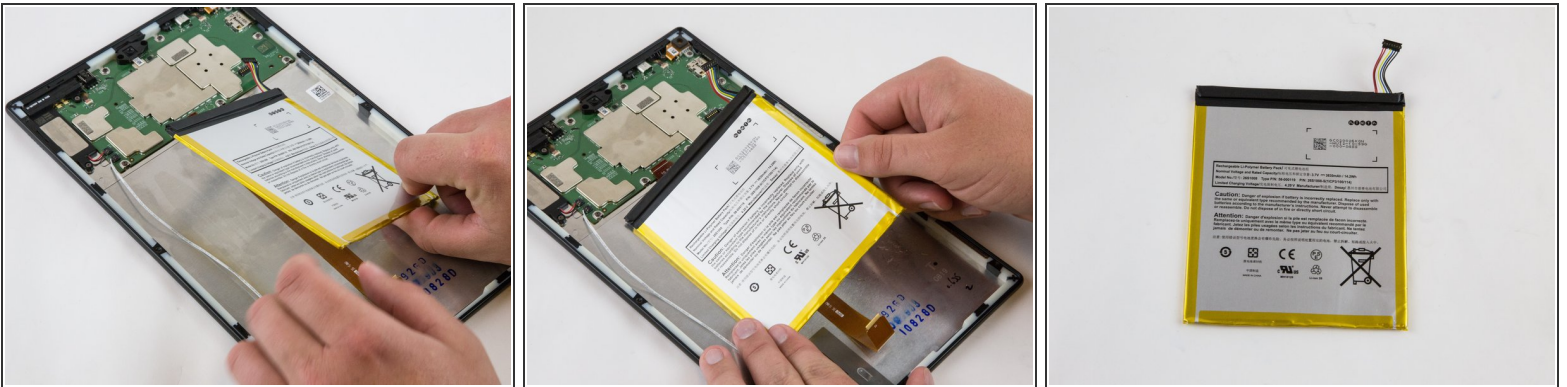
Step 7



 Make sure all the adhesive is removed before trying to lift the battery from the case.

- After the battery is totally free of any adhesion, simply lift the battery from the case.

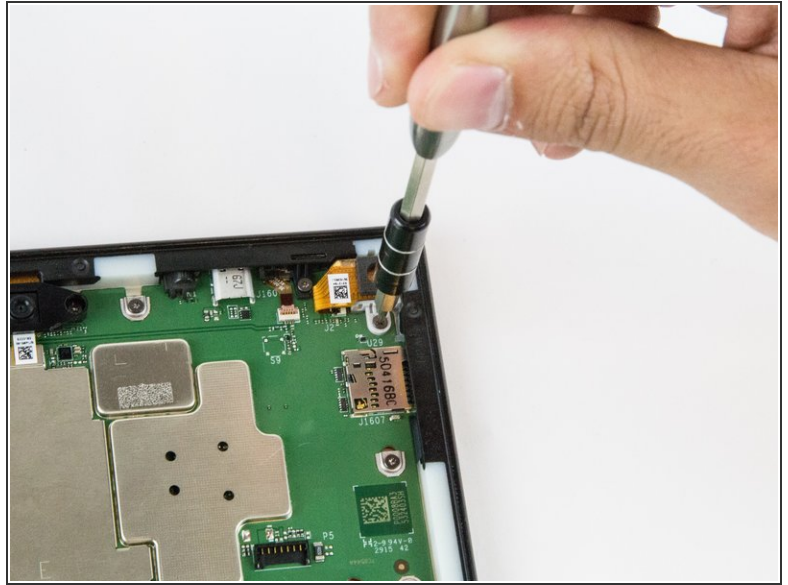
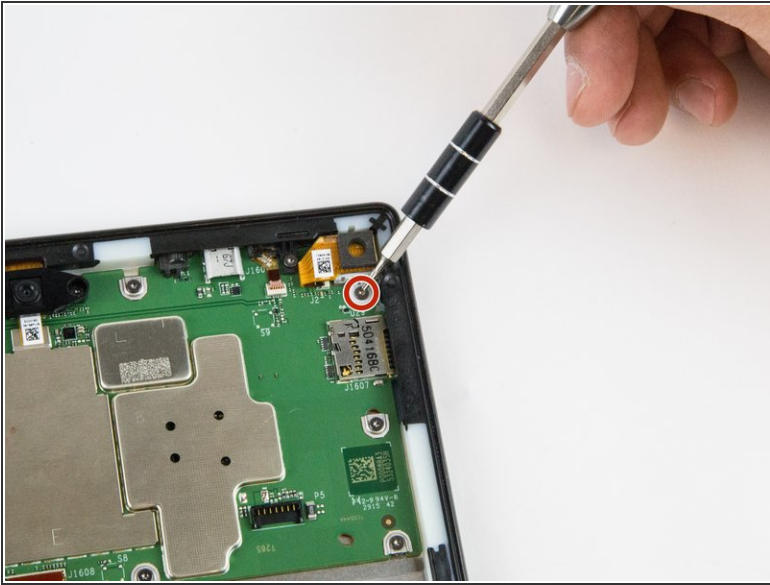
Step 8



- Inspect battery for any leakage.

 Please follow all U.S. regulations and laws when disposing or recycling the battery.

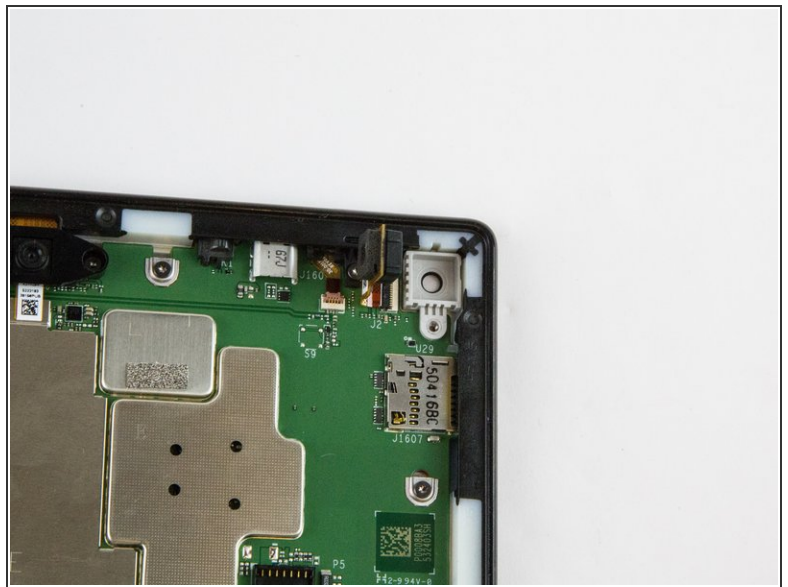
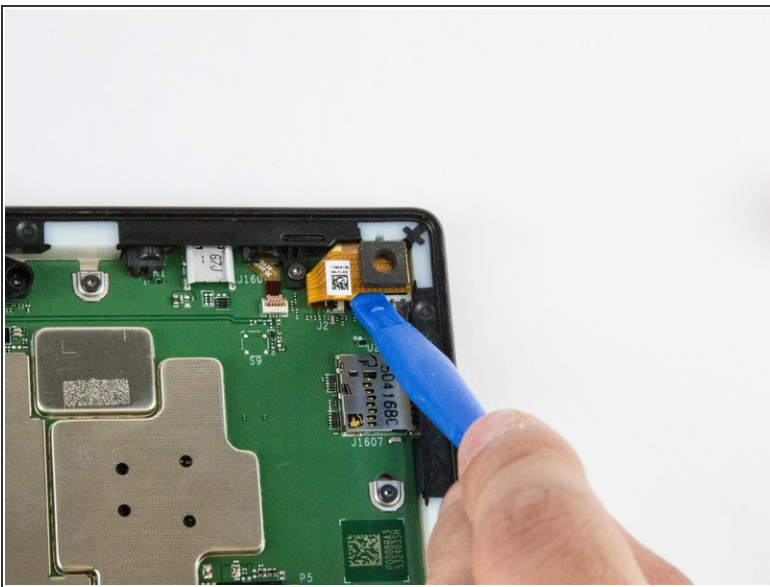
Step 9 — Rear Facing Camera



- Remove the single T5 Torx screw at the base of the camera.

☛ Once removed, place the screw aside in a safe location.

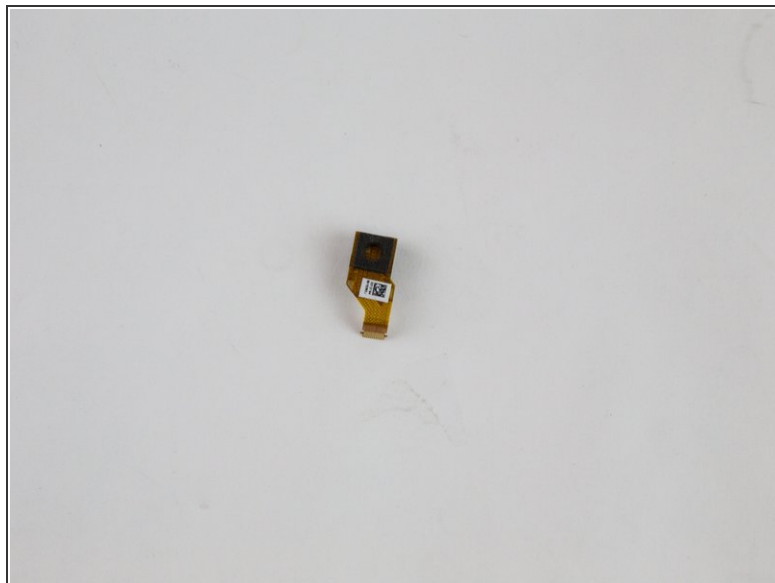
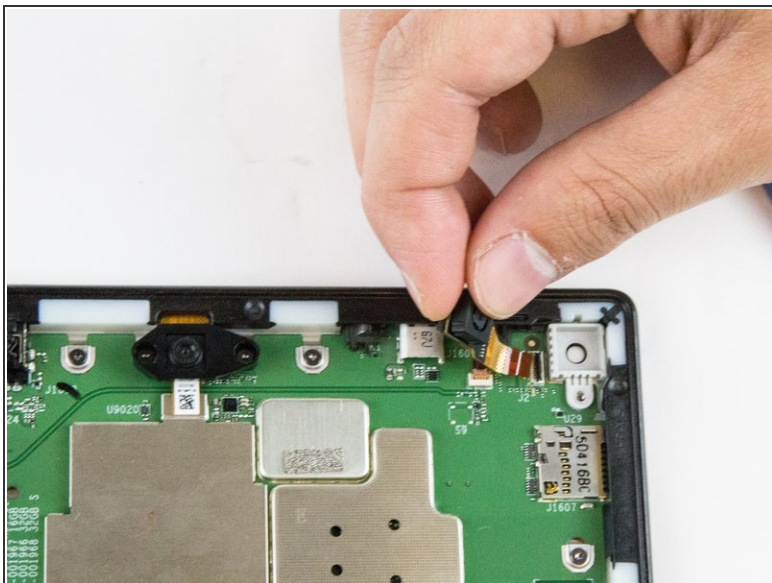
Step 10



- Lift the camera from the case using the plastic opening tool.

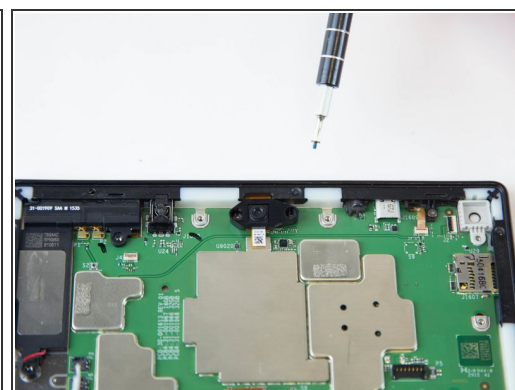
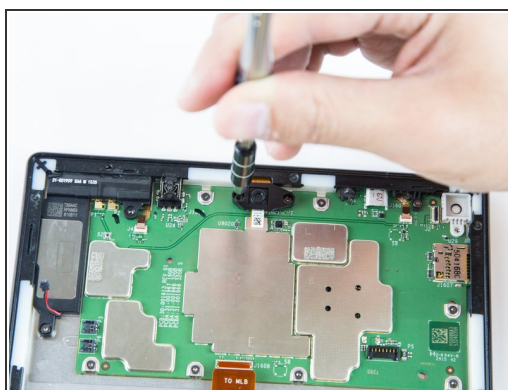
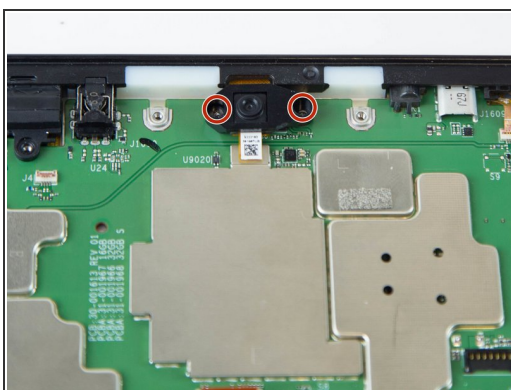
i The camera is still connected to the motherboard via the ZIF connector.

Step 11



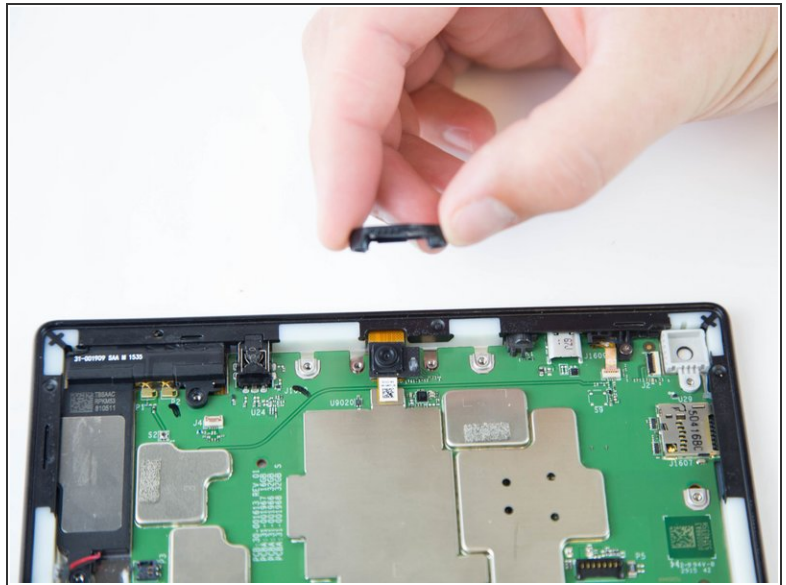
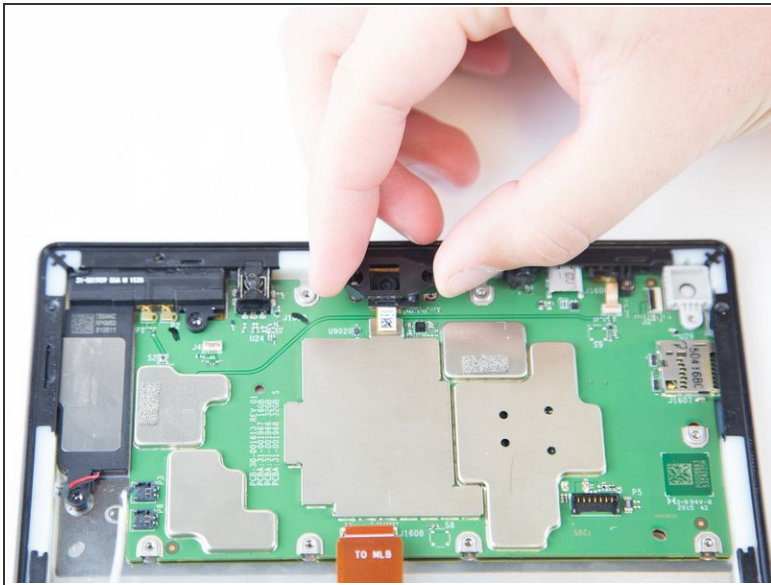
- Gently grab the camera and pull to remove.
- The camera is now free from the motherboard.

Step 12 — Front Facing Camera



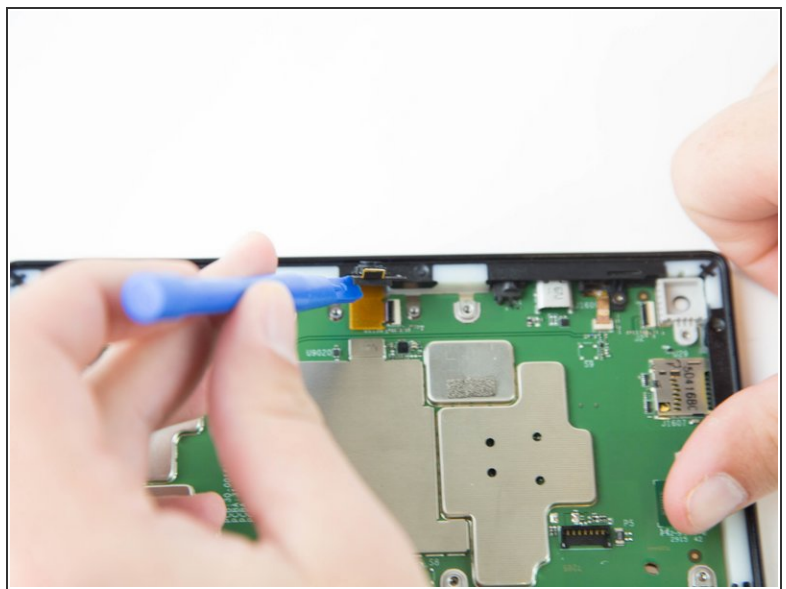
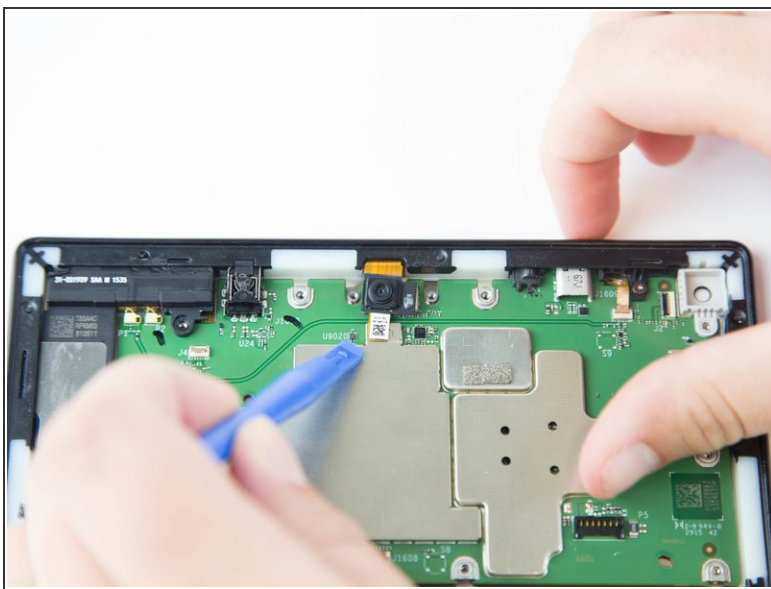
- Remove the two screws from front facing camera using the T5 Torx Screwdriver.
- ⓘ Make sure you place the screws in a safe location nearby.

Step 13



- Lift the black plastic cover once the screws are removed.
- Place aside for later reassembly.

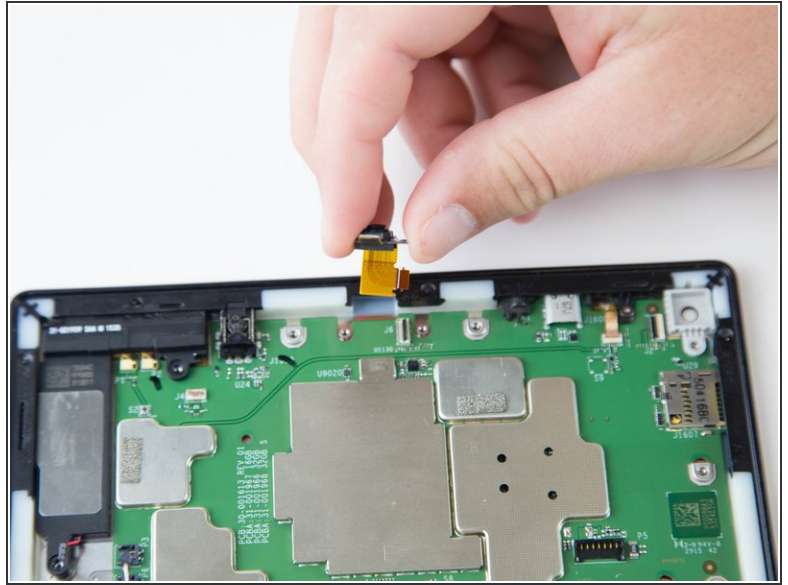
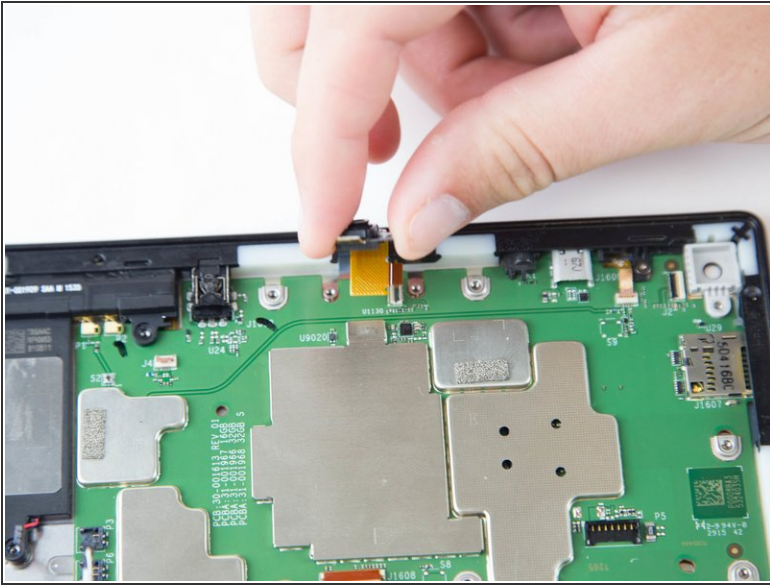
Step 14



- Detach the connector using a plastic opening tool or spudger.

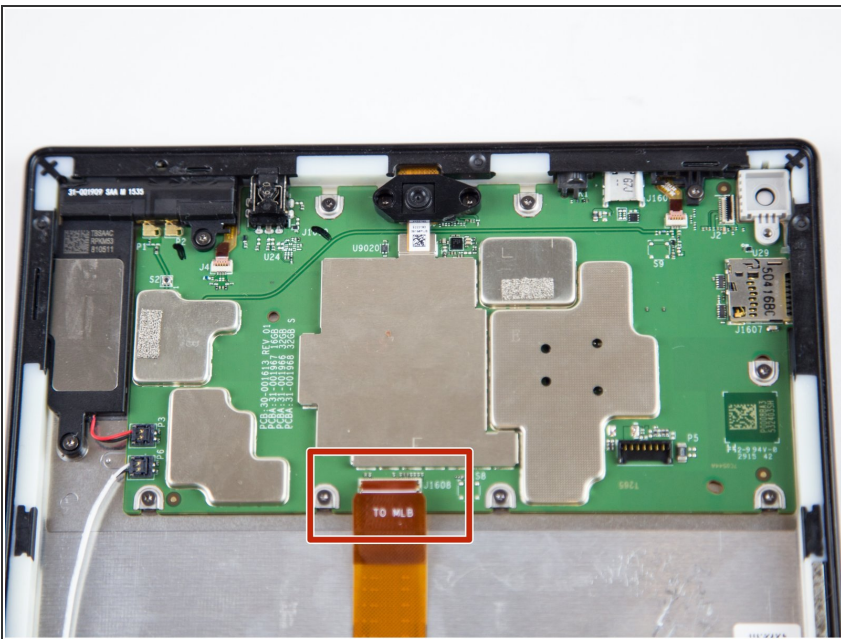
 The camera is still connected to the motherboard.

Step 15



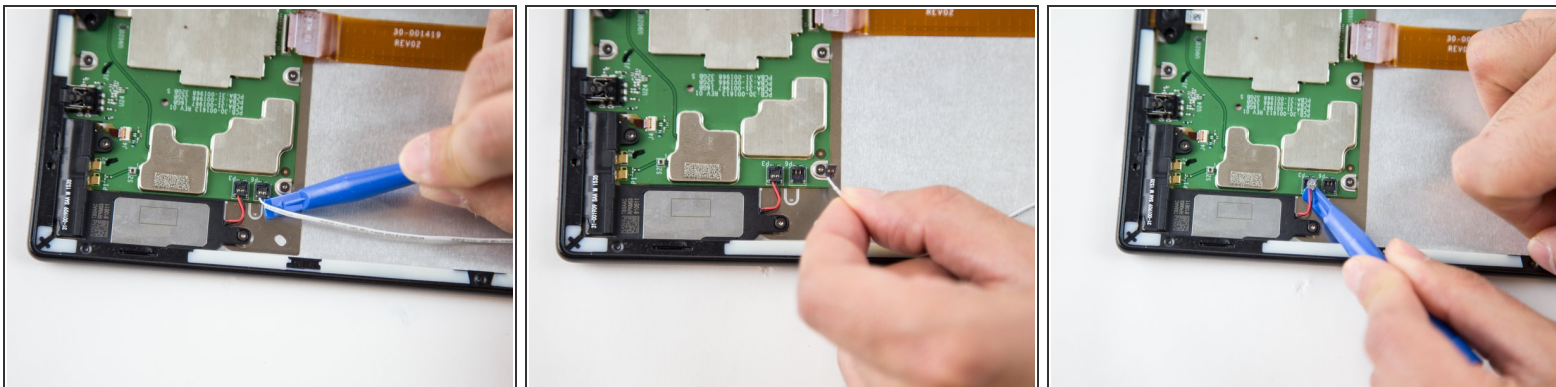
- Grip the camera and lift up to detach the ZIF connector from the motherboard.

Step 16 — Motherboard



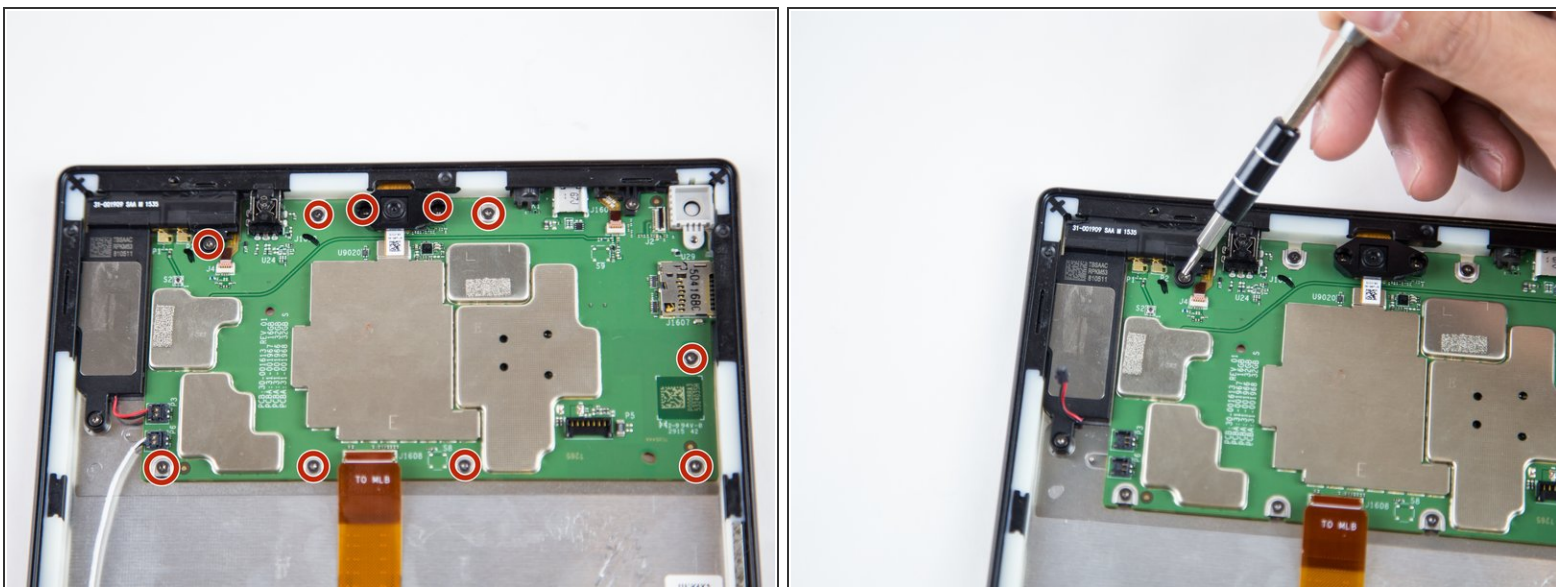
- Lift the ZIF connector up to disconnect from the motherboard.

Step 17



- Disconnect the connectors using the plastic opening tool.

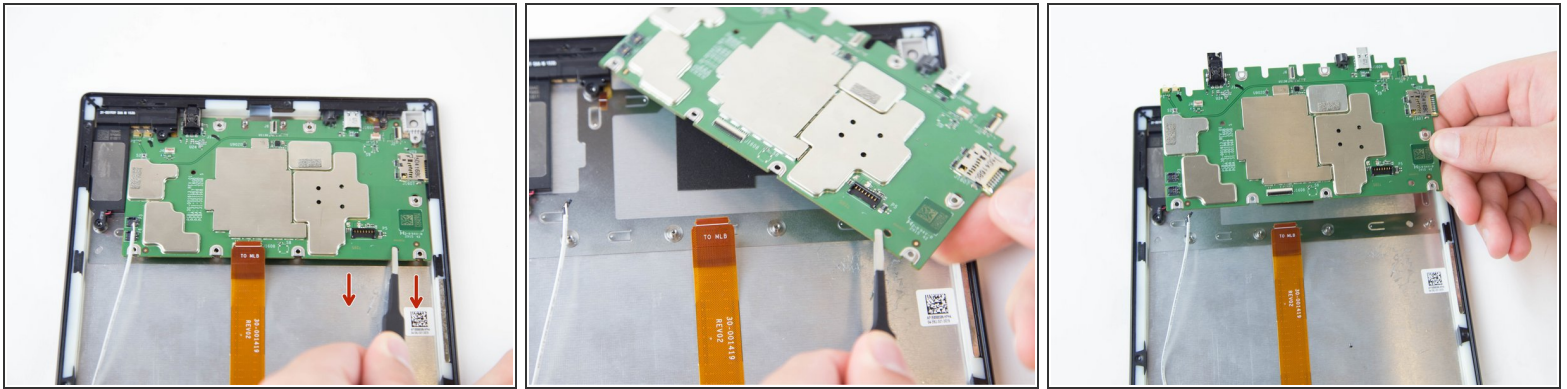
Step 18



- Remove the ten T5 Torx screws securing the motherboard to the case.

- ⓘ Keep the screws together in a safe place for reassembly.

Step 19



- Lift and pull the motherboard down, gently, towards the case using the tweezers.

To reassemble your device, follow these instructions in reverse order.