



Amazon Fire HD 8 Bottom Speaker Replacement

If your bottom speaker is faulty, this guide will help you open the device and replace the speaker.

Written By: Marisa Holste



INTRODUCTION

In this guide, we will show you how to replace the speaker on the bottom left of the device. Before you start, make sure your device is powered off.


TOOLS:

- [Heavy-Duty Spudger](#) (1)
 - [Heat Gun](#) (1)
 - [iFixit Opening Tools](#) (1)
 - [Tweezers](#) (1)
 - [T4 Torx Screwdriver](#) (1)
-

Step 1 — Screen




- Heat the edges of the screen with a heat gun on the lowest setting by using sweeping motions from about 8-10 inches away.

 Make sure you use sweeping motions with the heat gun, instead of hovering over one area.

Step 2



- After 1-2 minutes, use a plastic opening tool to pry the screen loose. Start at the top right corner and gently pry the screen from the device.

 Be careful not to bend the screen by pushing it too far from the rest of the device.

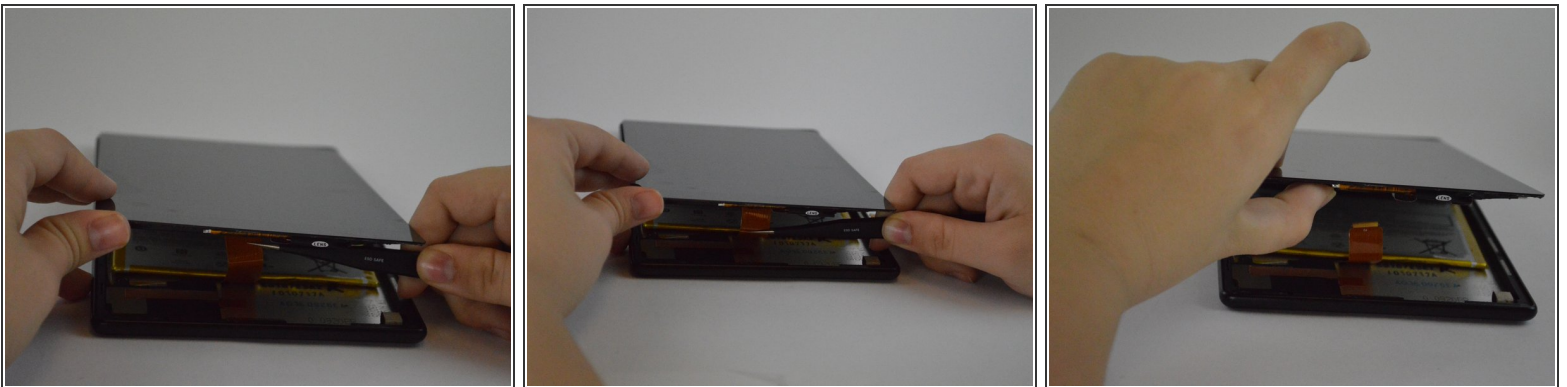
Step 3



- Slide a plastic opening tool and spudger along the underside of the screen using enough force to peel the screen and the adhesive strip from the other half of the device.

⚠ Be mindful of the orange cable connecting the screen to the mid-bottom of the device.

Step 4



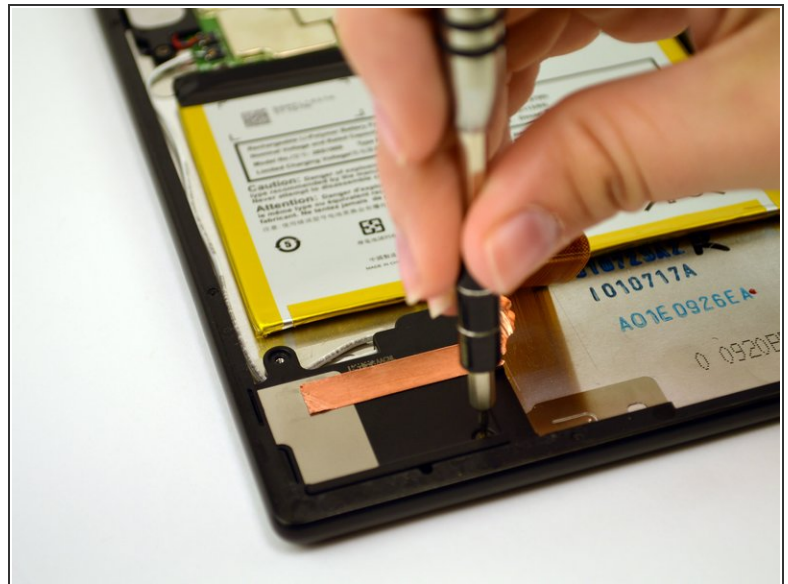
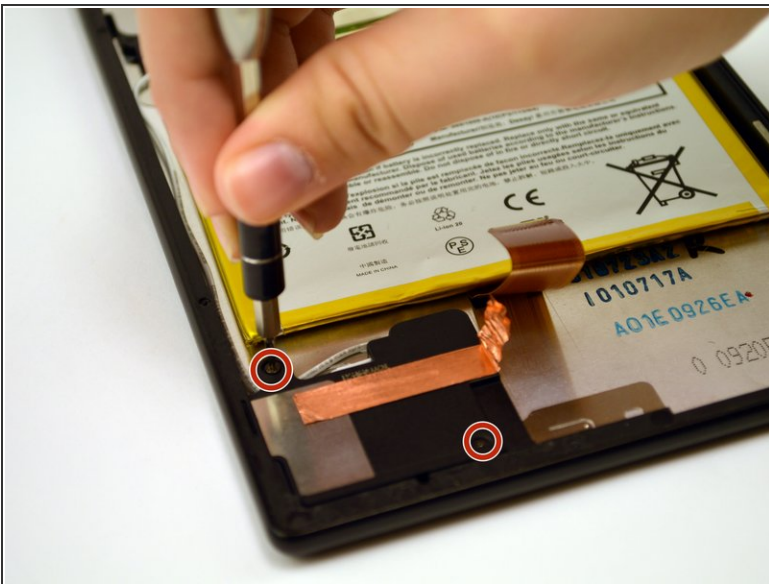
- To remove the screen from the device, use tweezers to gently pull the orange cable from its connection to the screen.

Step 5 — Bottom Speaker



- Using tweezers, carefully lift the copper strip from the right side of the speaker.

Step 6



- Remove the two screws located on the top left and bottom right of the speaker using a T4 screwdriver.

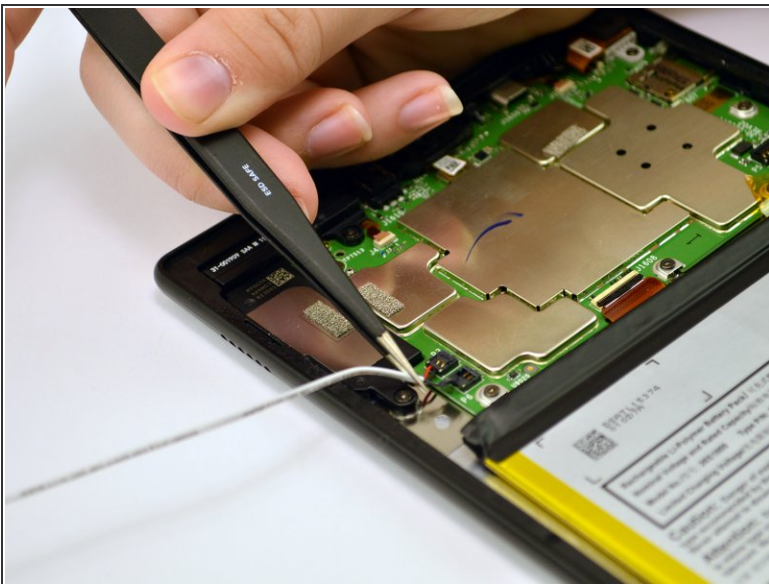
Step 7



- Lift the right side of the speaker and carefully unhook and remove it from the device.

⚠ Be mindful of the white wire connecting the speaker to the device.

Step 8



- Set aside the black speaker and follow the white wire to its connection on the upper left side of the motherboard.
- Using tweezers, gently pry the black clip upward from the board.

To reassemble your device, follow these instructions in reverse order.