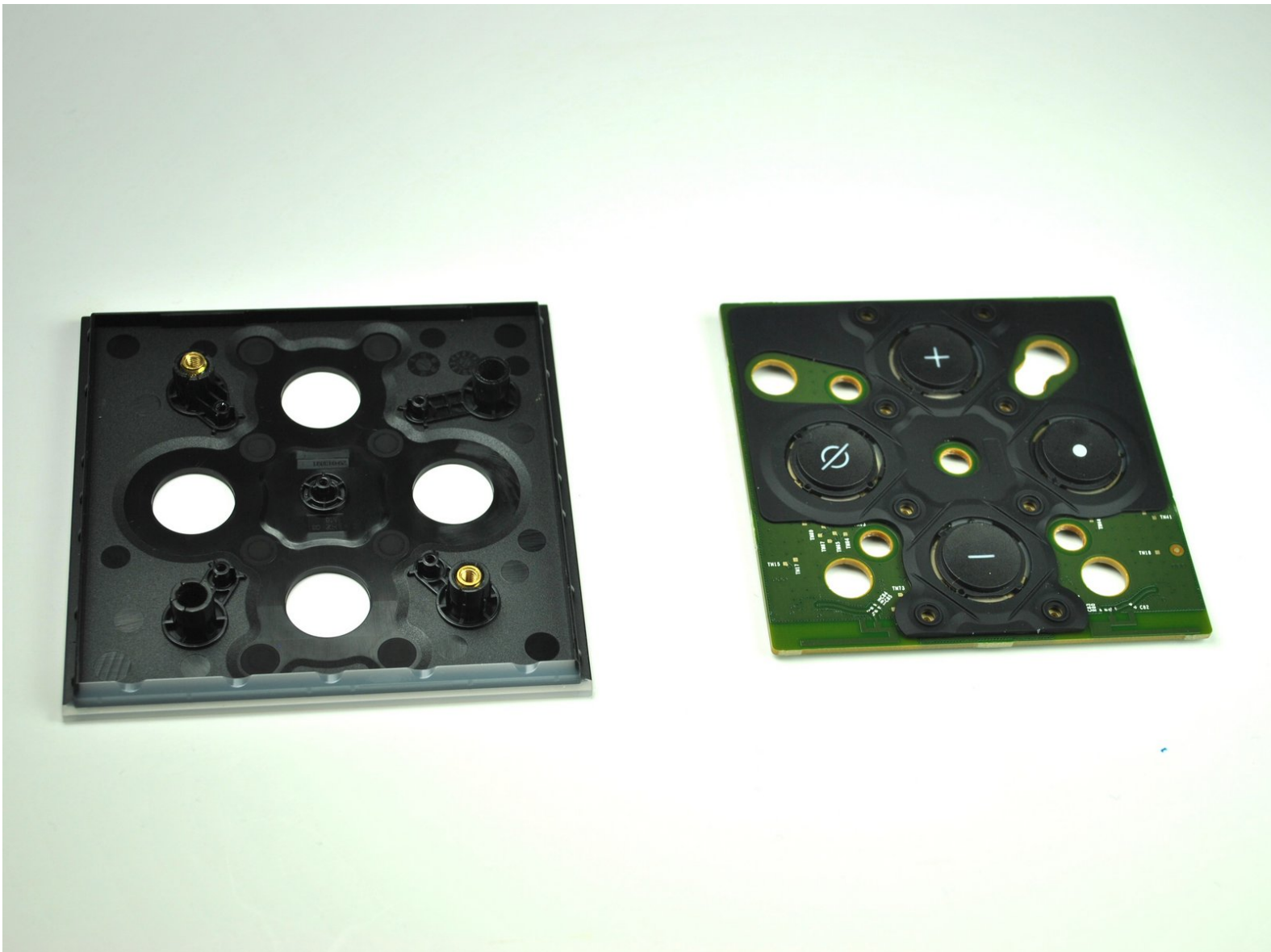




# Amazon Fire TV Cube Button Replacement

Replace the Cube buttons to return function back to the device.

Written By: Kailey Jackson



## INTRODUCTION

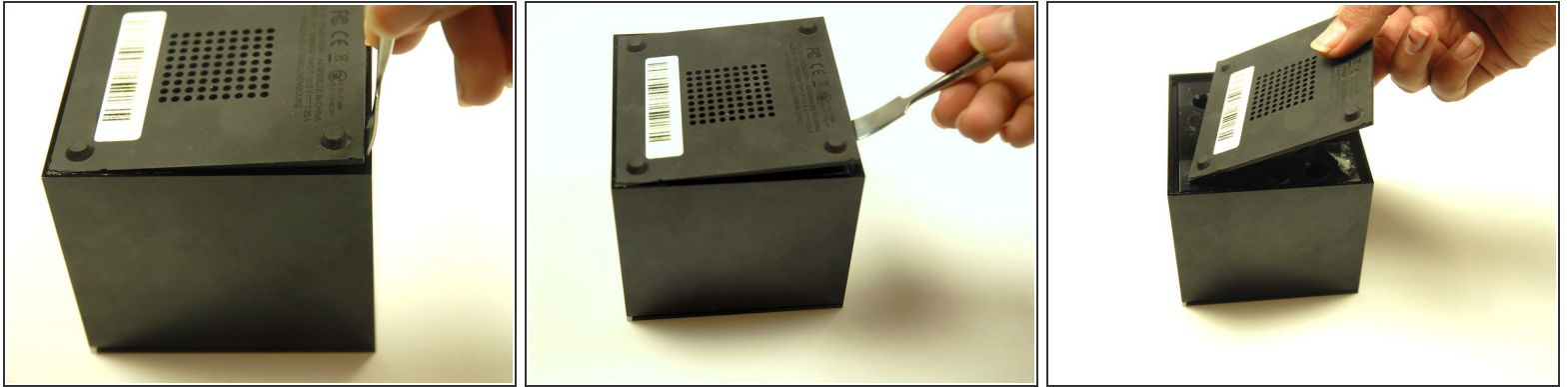
This guide will instruct and explain how to remove and replace the buttons on your Amazon Fire TV Cube. This task requires a spudger and delicacy when disconnecting wires. If you follow the steps provided, you will successfully be able to replace the Cube buttons.



### TOOLS:

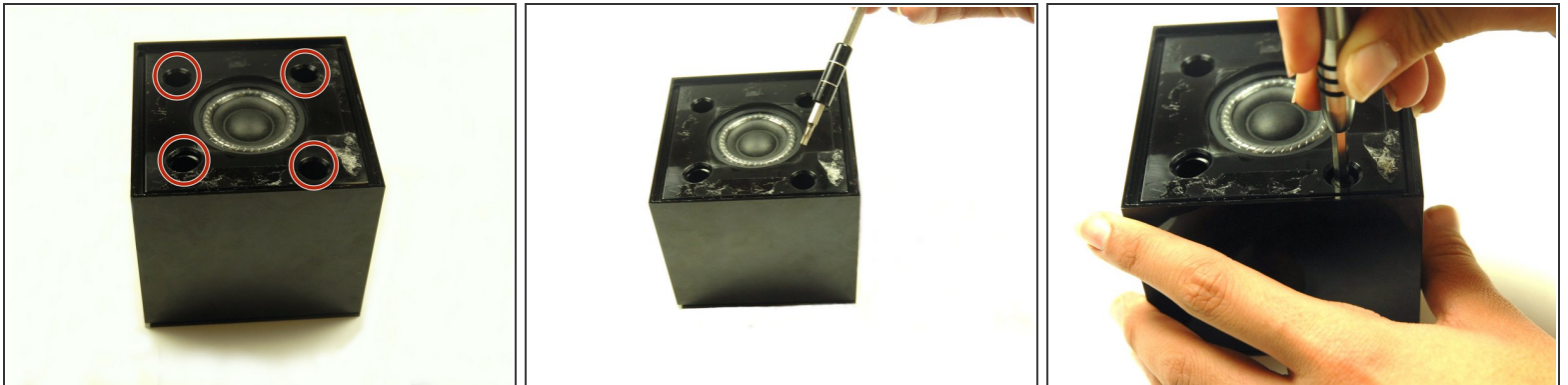
- [Metal Spudger](#) (1)
  - [T10 Torx Screwdriver](#) (1)
  - [Magnetic Project Mat](#) (1)
  - [Spudger](#) (1)
  - [T6 Torx Screwdriver](#) (1)
  - [Tweezers](#) (1)
-

## Step 1 — Speaker



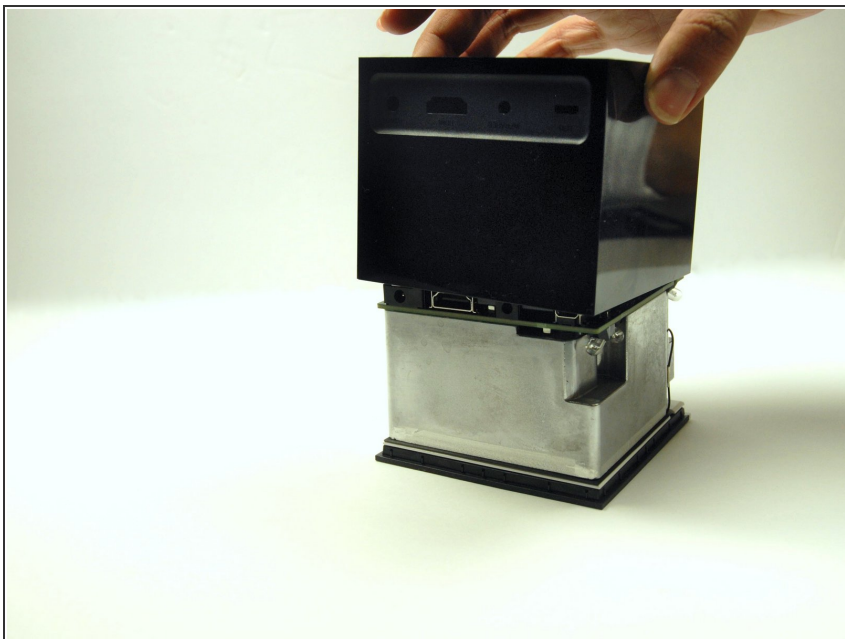
- Using a metal spudger, push down between the edge seals on the base and pry off the base.
- ⓘ Do not confuse the top thin layer of rubber with the thick palette that needs to be removed.
- ⓘ This may require substantial force.

## Step 2



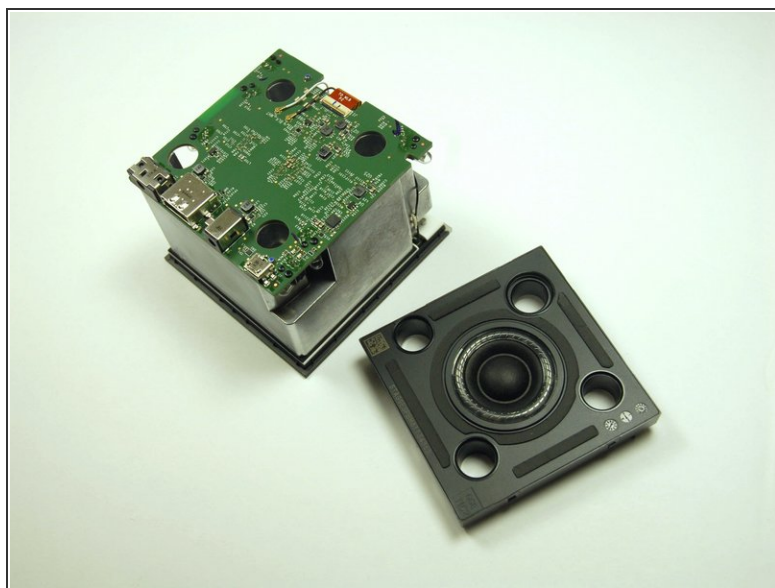
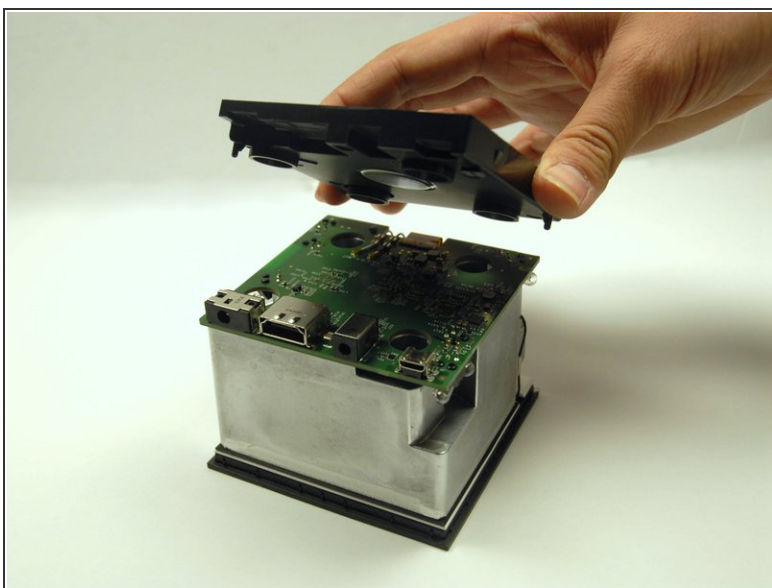
- Use the T-10 bit from the iFixit tool kit to unscrew the four 1.4 inch corner screws on top of the first layer.
- ⓘ There are 4 washers to go with each of the screws.

### Step 3



- Lift and remove the full frame.

### Step 4

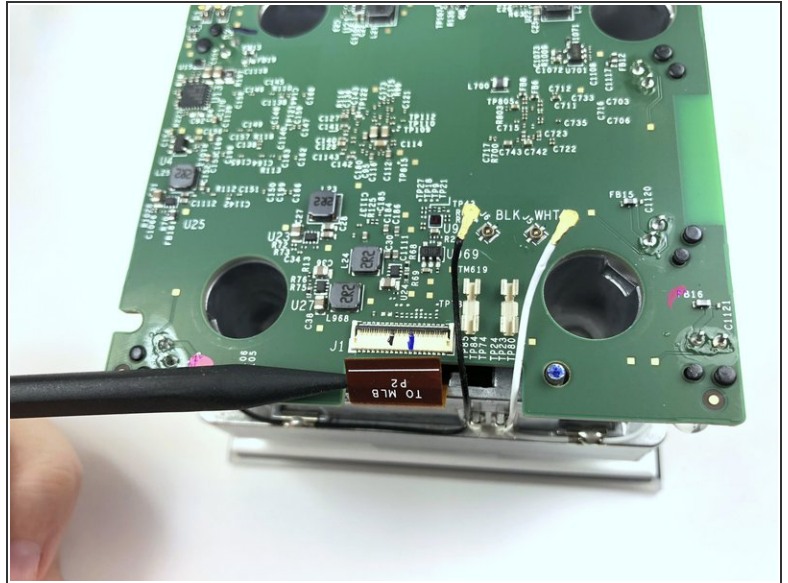
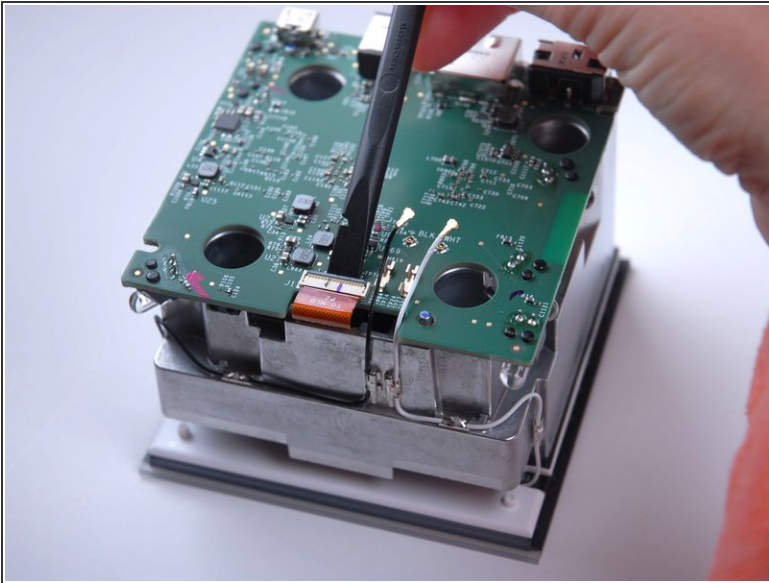


- Lift and remove the speaker.

☞ Carefully match the outlets on the speaker with the outlets on the motherboard.

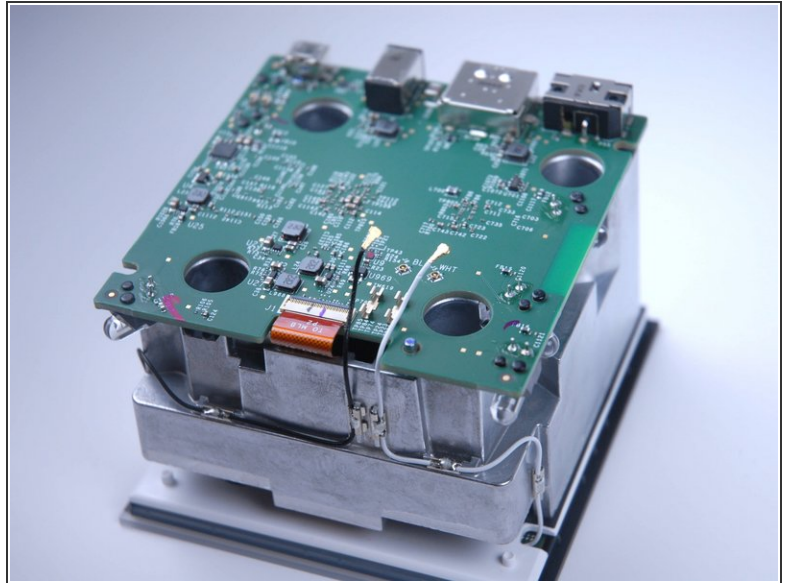
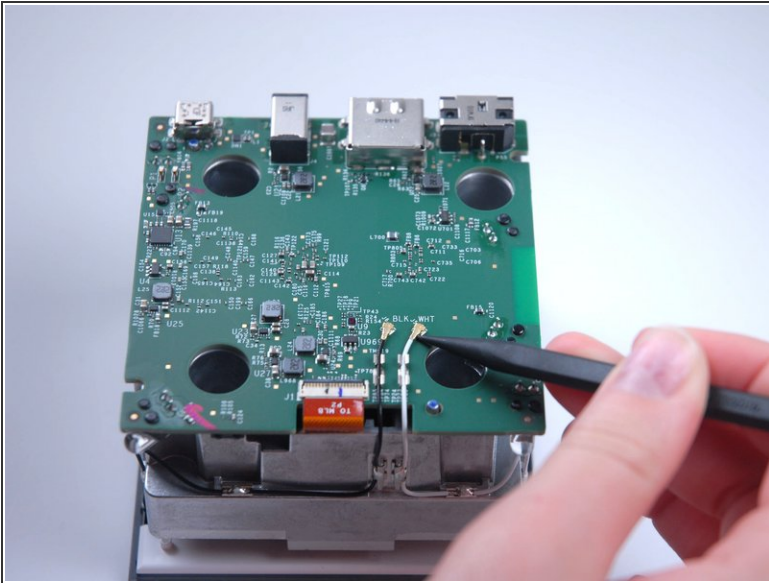


## Step 5 — Motherboard



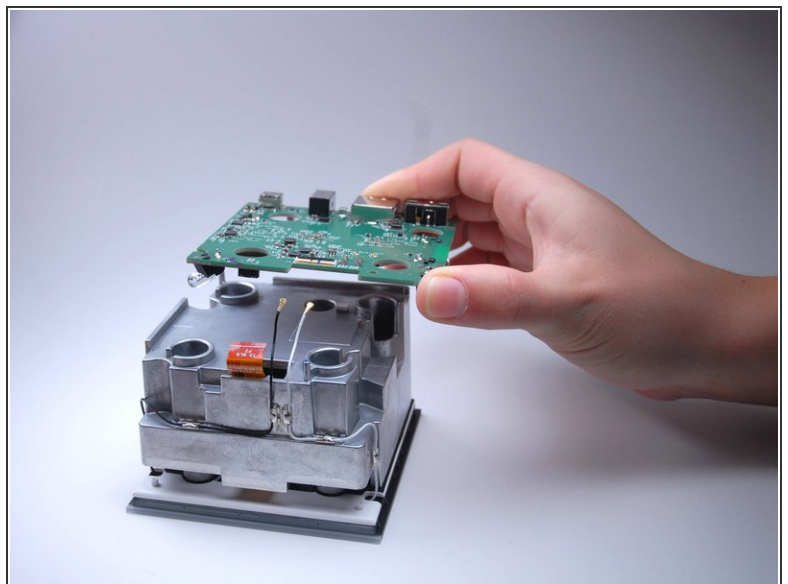
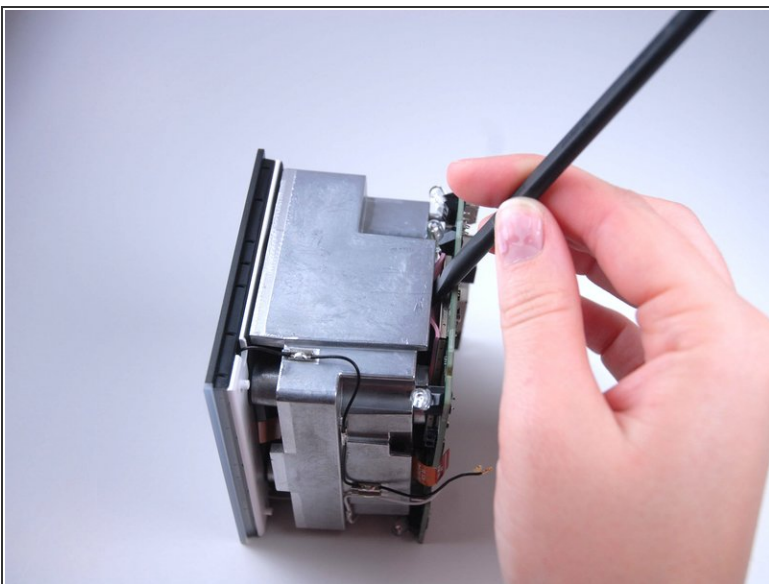
- Lift the black latch by gently prying up with the flat end of the Spudger.
- Detach the copper tap by pulling it out.

## Step 6



- Use the pointed end of the Spudger to carefully detach the black and white wires from the motherboard.
- ⓘ Make sure all three attachments (the copper tab and both wires) are fully disconnected before continuing.

## Step 7



- Gently pry the motherboard up and off.

This document was generated on 2019-11-05 06:07:41 PM (MST).

## Step 8 — Button



- Detach the wires from the opposite end of the frame using the flat end of the Spudger.
- ⓘ You can't see where the wires are attached because it is hidden underneath the white frame.
- ⓘ Make sure both wire attachments are fully disconnected before continuing.

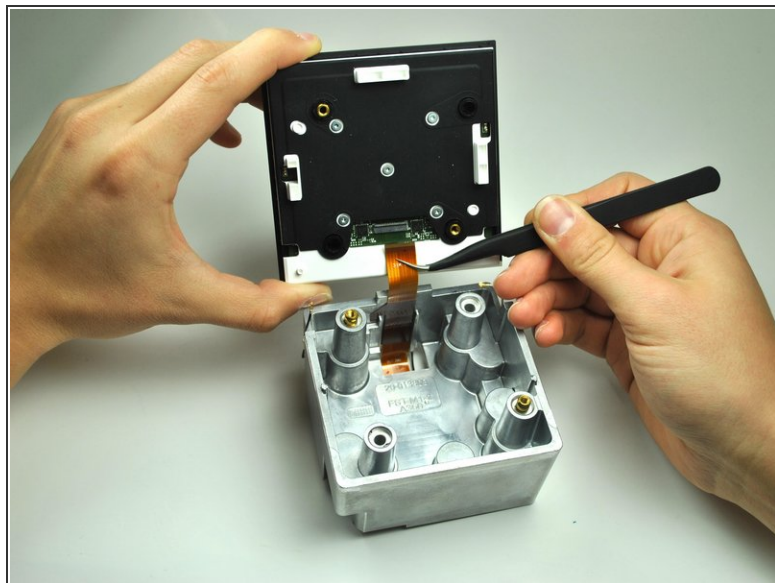
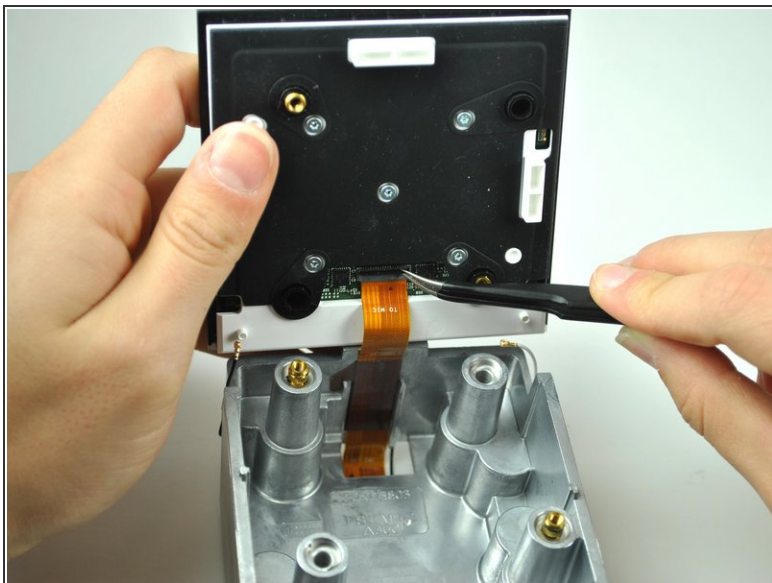
## Step 9



- Pry apart the black plastic face from metal frame.
- ⓘ This requires substantial force.
- ⚠ Be careful not to tear connecting copper tab.

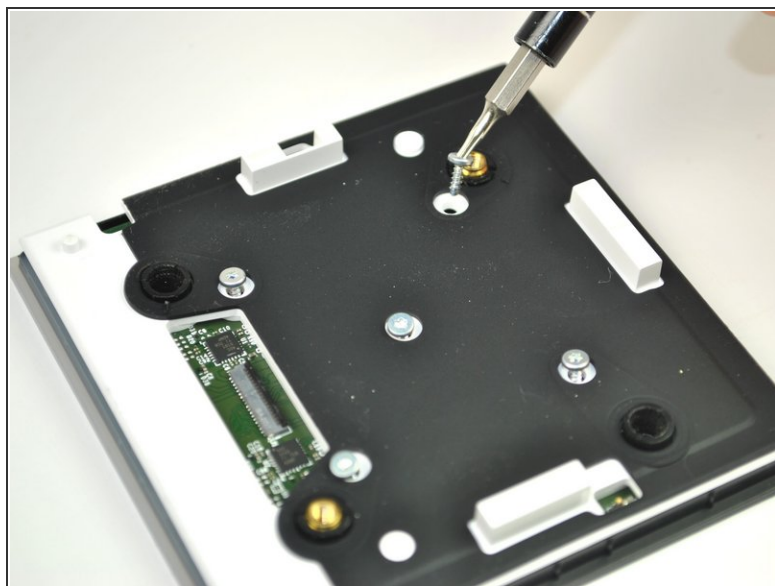
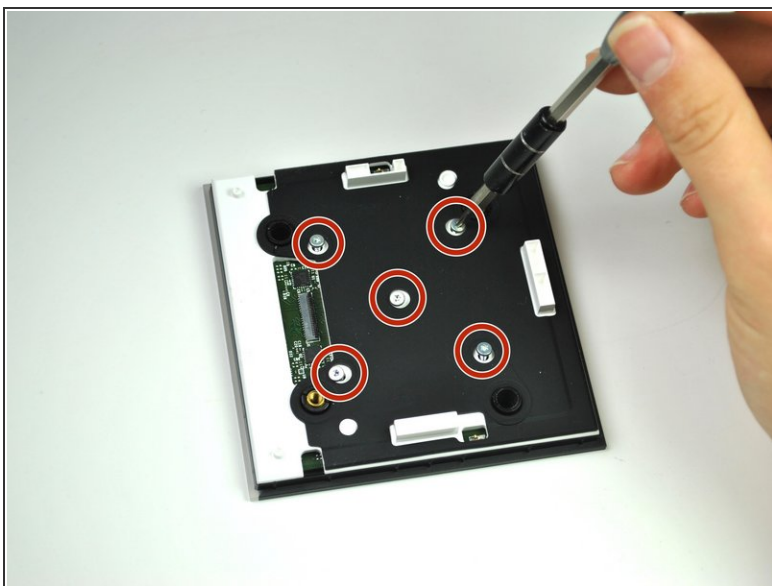


## Step 10



- Lift the black latch to detach the copper tab by gently prying with the Angled Tweezers.
- Use the Angled Tweezers to carefully pull out the copper tab.

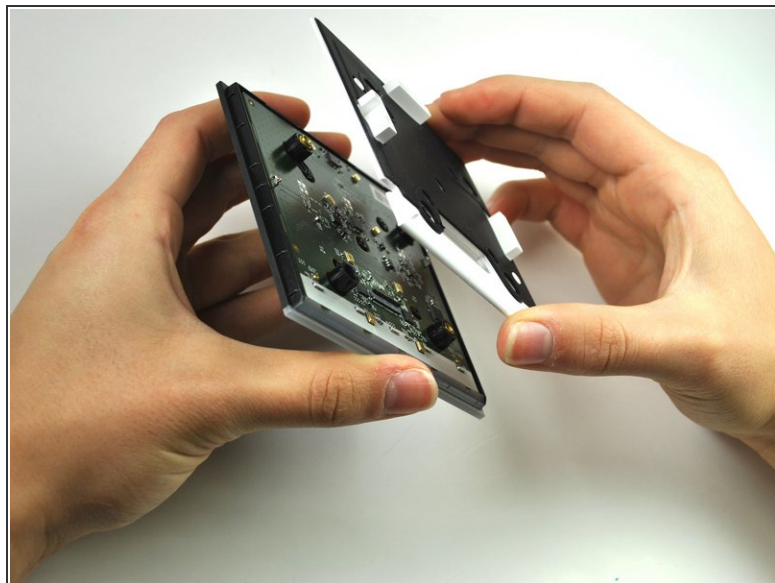
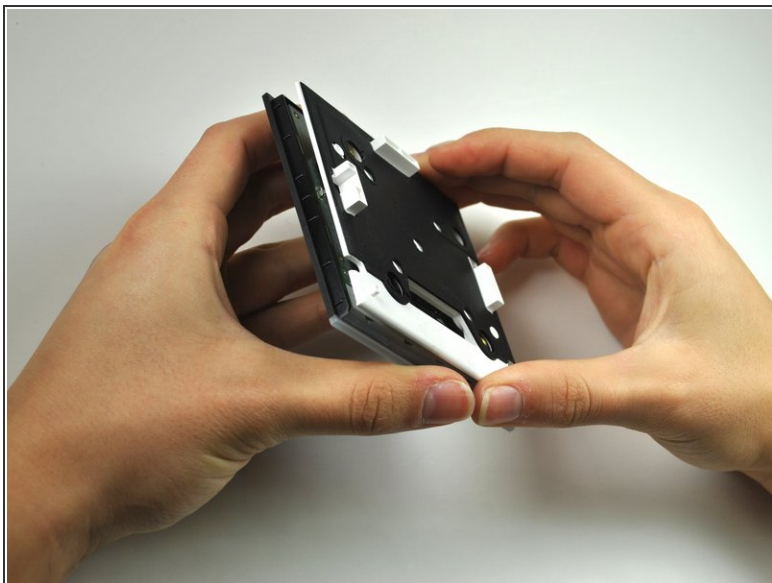
## Step 11



- Unscrew the five T-6 quarter inch screws.

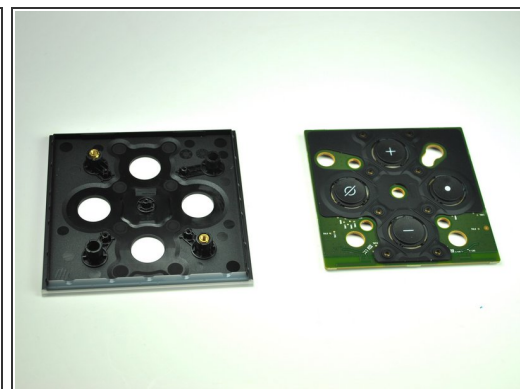
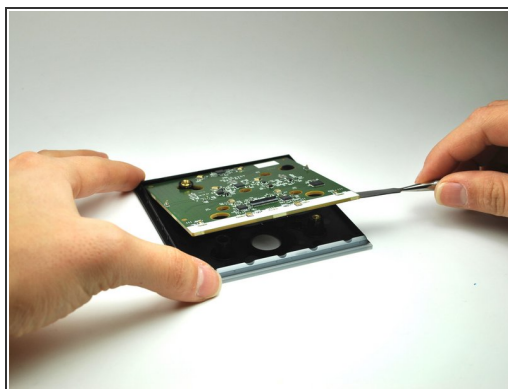
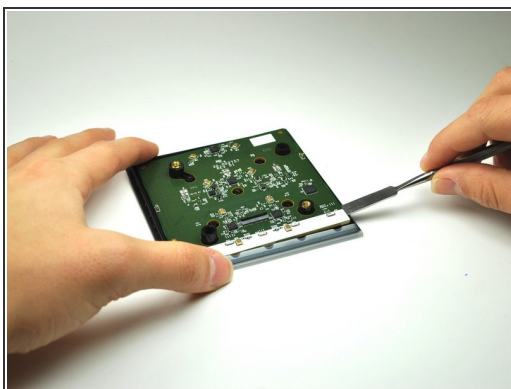


## Step 12



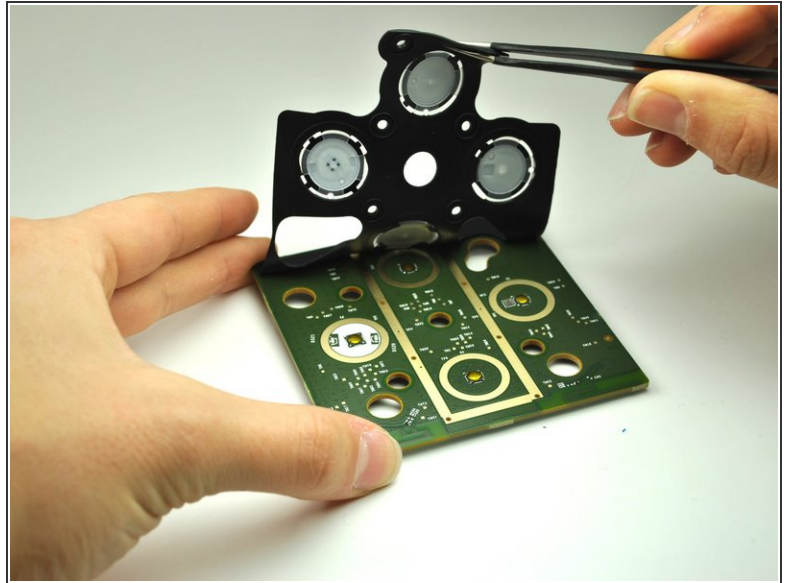
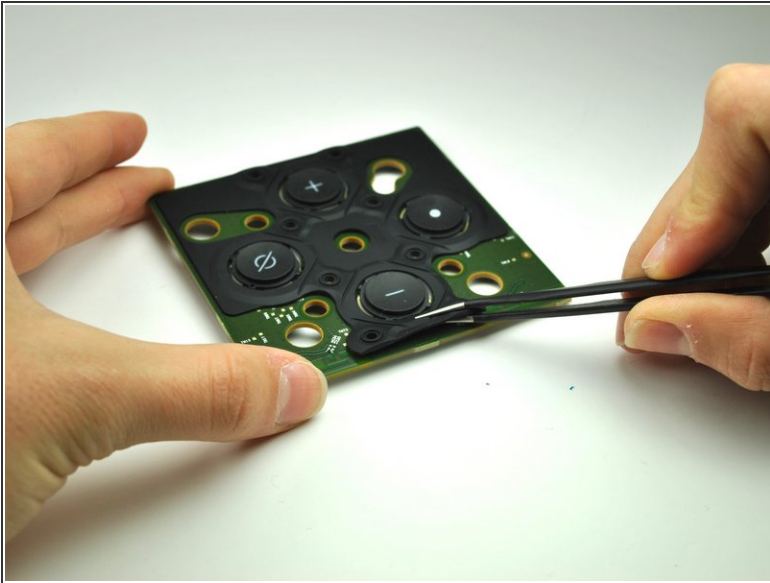
- Lift and remove white the frame to reveal the circuit board.

## Step 13



- Using a the Metal Spudger, pry up the circuit board to reveal a rubber button panel.

## Step 14



- Peel back the rubber button casing.
- ☑ Pay close attention to the orientation of the rubber casing.

To reassemble your device, follow these instructions in reverse order.