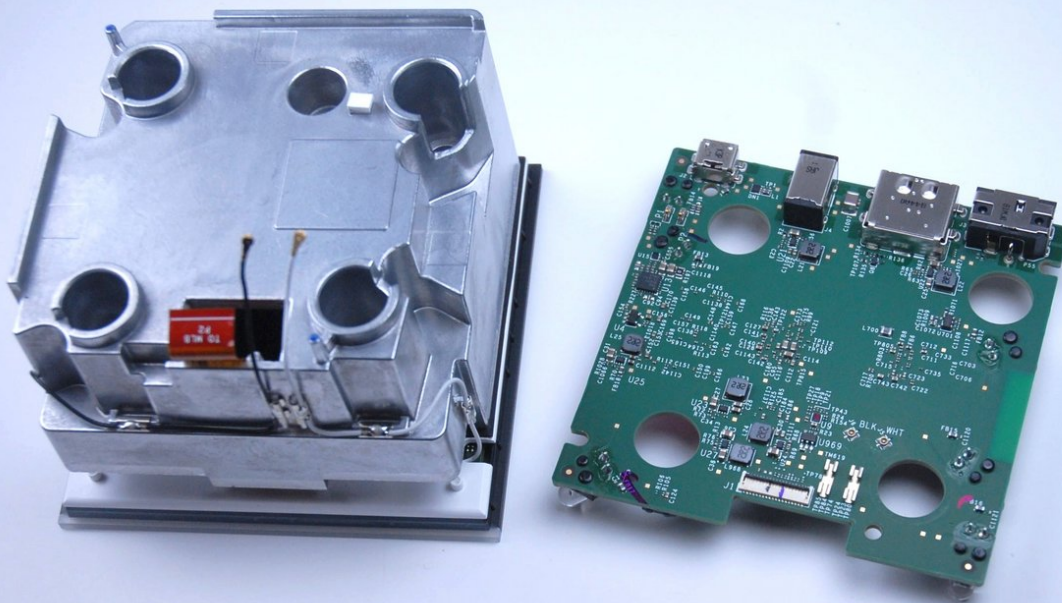




# Amazon Fire TV Cube Motherboard Replacement

Replace the motherboard on your device to restore function to Cube.

Written By: Piper Kaul



---

## INTRODUCTION

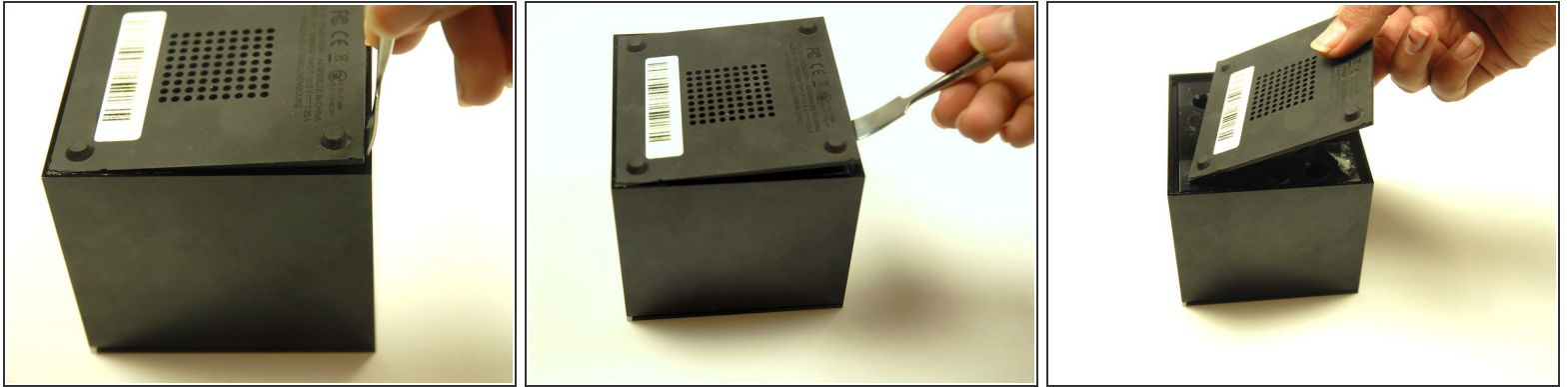
These steps will guide you through the disassembly and the replacement of the Fire TV Cube motherboard. This guide requires the metal flathead spudger. Use extra caution when detaching wires.



### TOOLS:

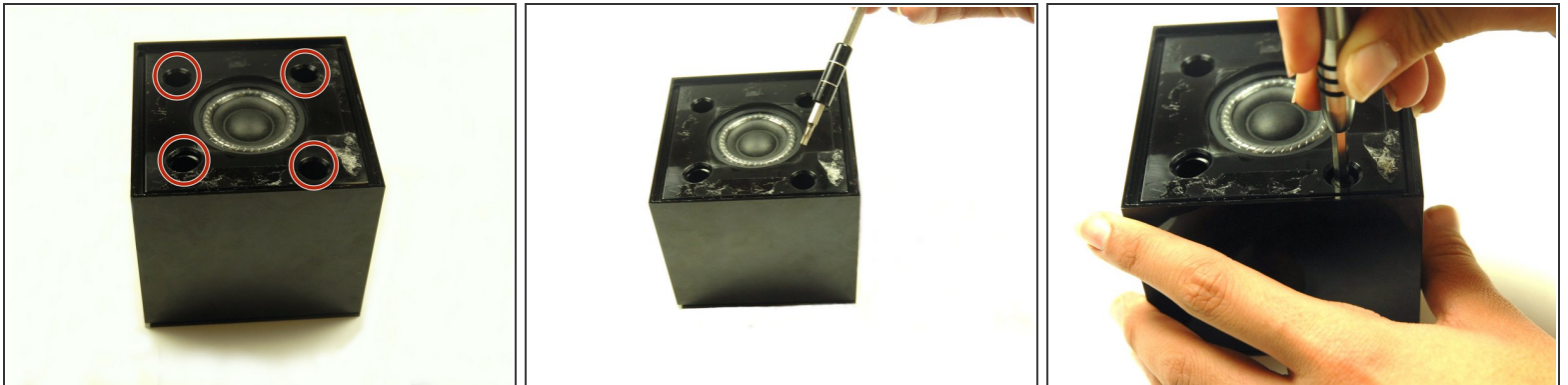
- [Metal Spudger](#) (1)
  - [Magnetic Project Mat](#) (1)
  - [Spudger](#) (1)
  - [T10 Torx Screwdriver](#) (1)
-

## Step 1 — Speaker



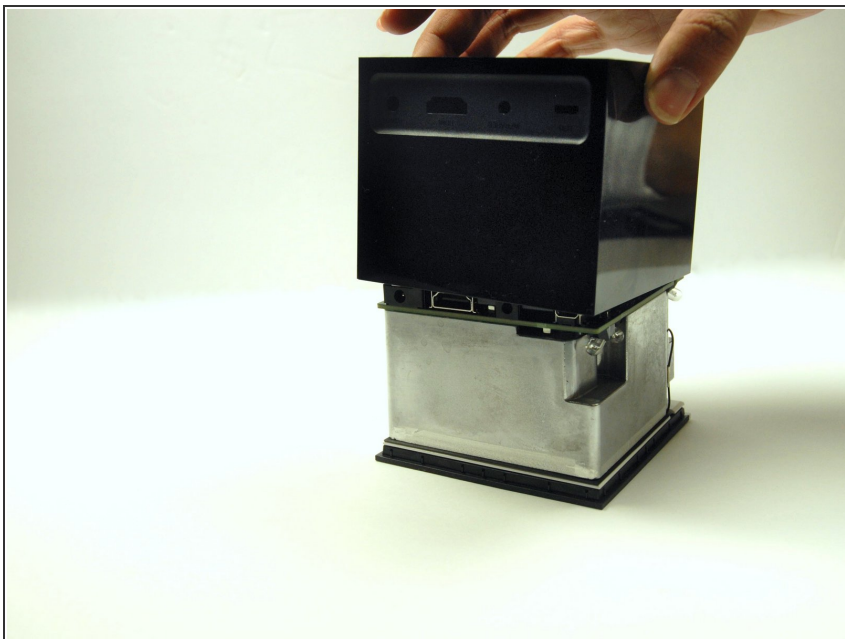
- Using a metal spudger, push down between the edge seals on the base and pry off the base.
- ⓘ Do not confuse the top thin layer of rubber with the thick palette that needs to be removed.
- ⓘ This may require substantial force.

## Step 2



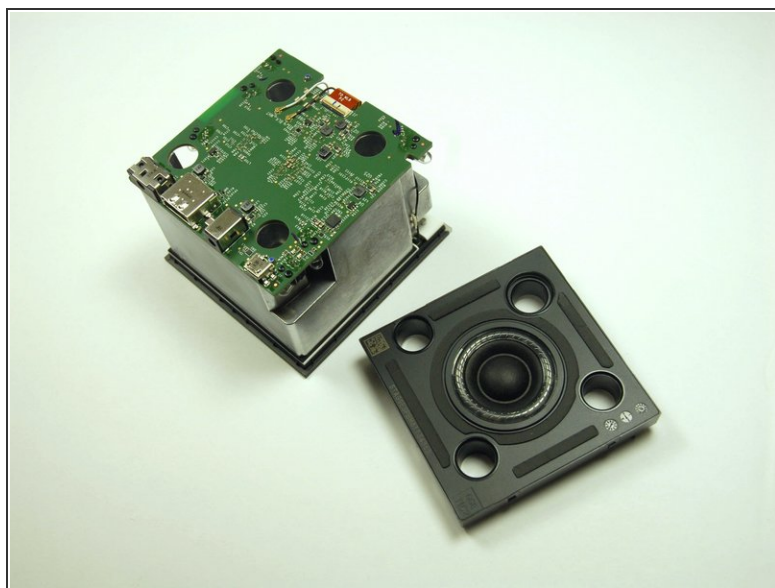
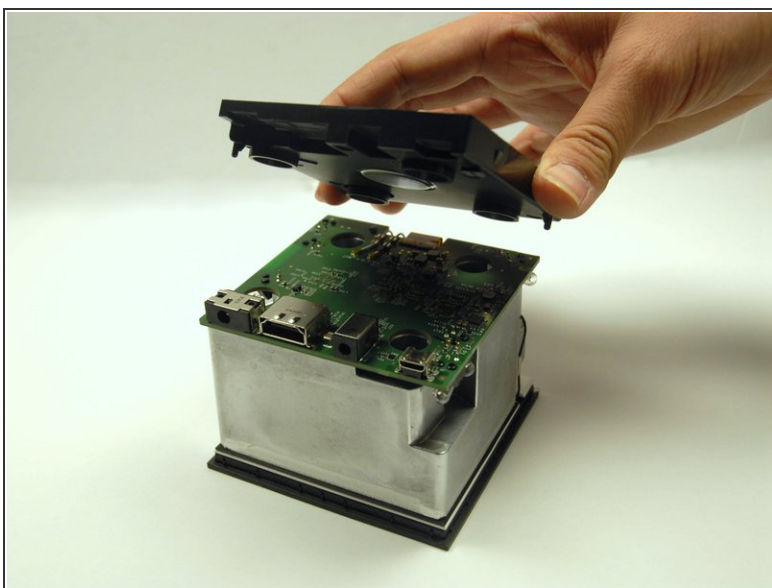
- Use the T-10 bit from the iFixit tool kit to unscrew the four 1.4 inch corner screws on top of the first layer.
- ⓘ There are 4 washers to go with each of the screws.

### Step 3



- Lift and remove the full frame.

### Step 4

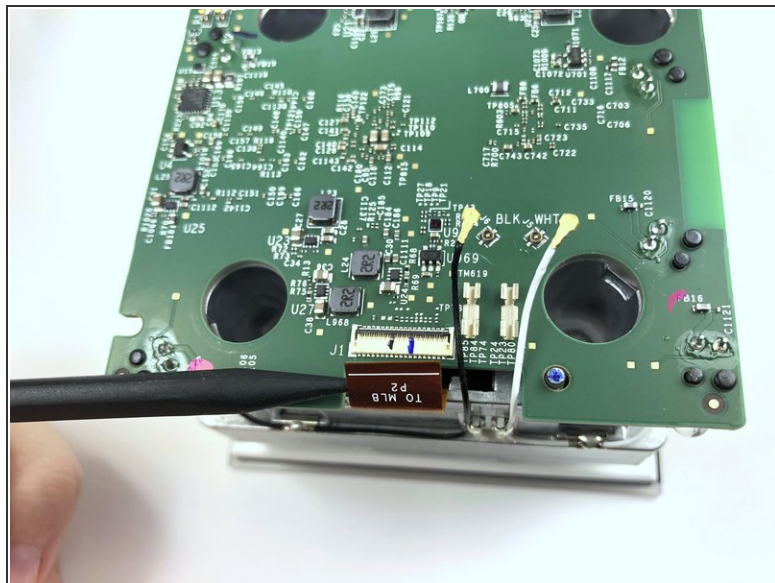
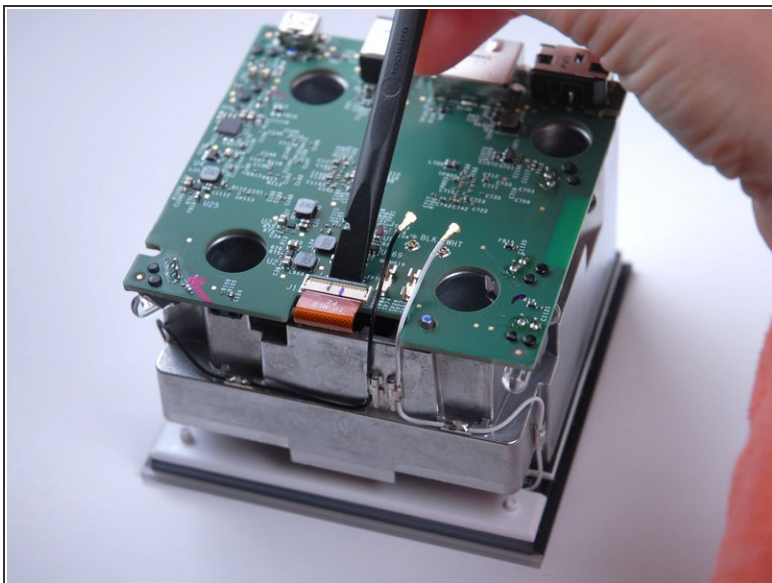


- Lift and remove the speaker.

☞ Carefully match the outlets on the speaker with the outlets on the motherboard.

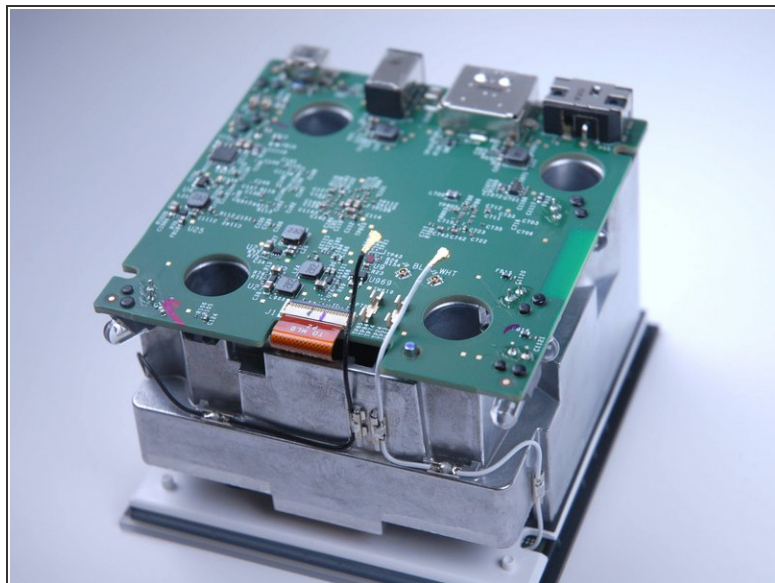
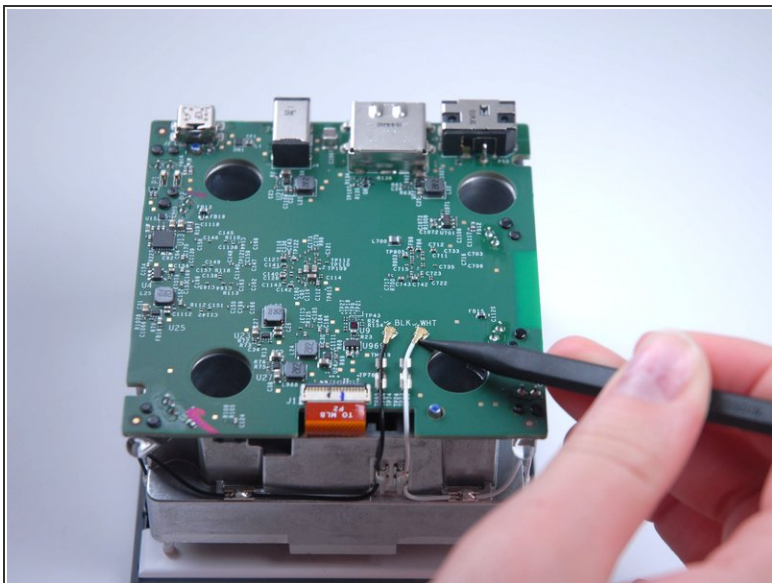


## Step 5 — Motherboard



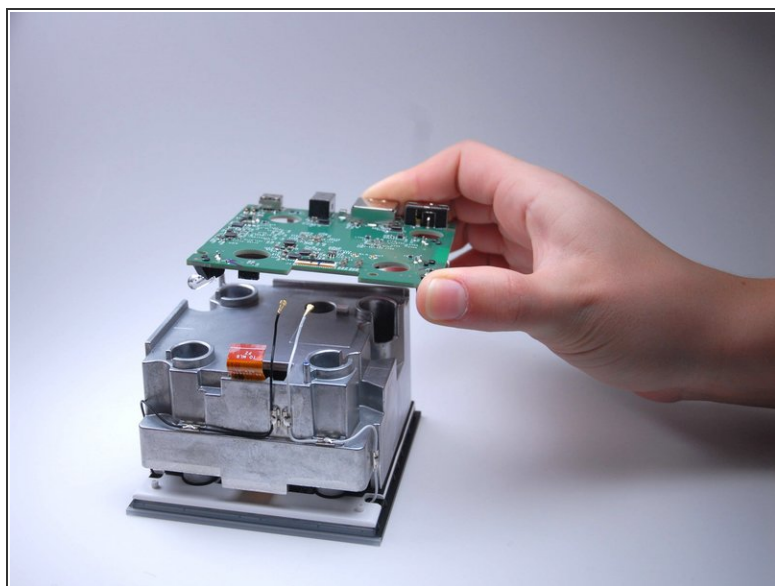
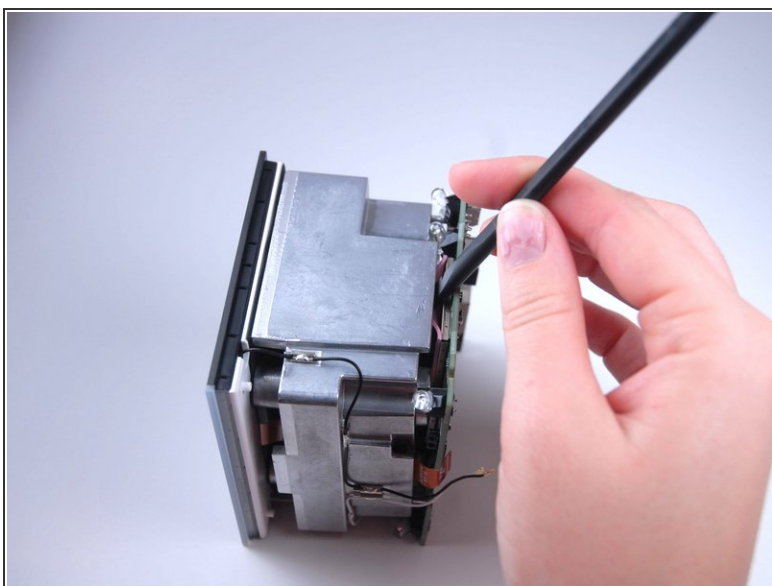
- Lift the black latch by gently prying up with the flat end of the Spudger.
- Detach the copper tap by pulling it out.

## Step 6



- Use the pointed end of the Spudger to carefully detach the black and white wires from the motherboard.
- ⓘ Make sure all three attachments (the copper tab and both wires) are fully disconnected before continuing.

## Step 7



- Gently pry the motherboard up and off.

This document was generated on 2019-09-16 12:01:07 PM (MST).

To reassemble your device, follow these instructions in reverse order.