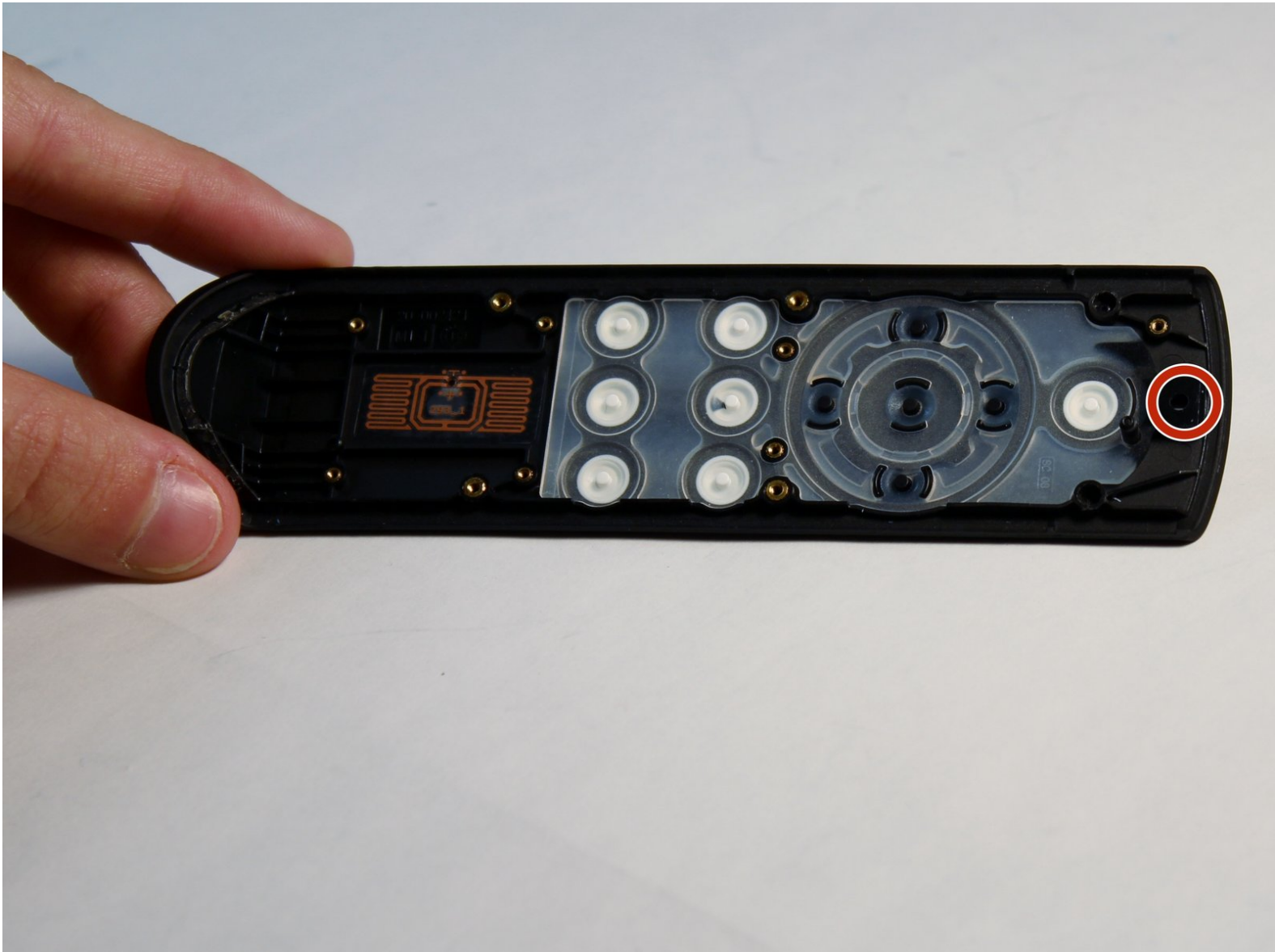




# Amazon Fire TV Remote Control Button Panel Replacement

Replace the remote control's button panel.

Written By: Alejandro Franco Ceron



## INTRODUCTION

Are some of the buttons on your remote unresponsive? Use this guide to replace the button panel on the remote control.

Make sure to keep the removed screws inside a container, or on a magnetic mat so they don't get misplaced.



### TOOLS:

- [JIS Driver Set](#) (1)
- [iFixit Opening Tools](#) (1)



### PARTS:

- [Amazon Fire TV Remote Control Pad](#) (1)

## Step 1 — Batteries



- Turn the remote control over to show its back and place your index finger in the tab. Squeeze gently to open the battery cover.
- Lift the battery cover up to expose the batteries.

## Step 2



- Use your index finger to push the battery back and lift up to remove the battery.
- Repeat the procedure for the second battery.

## Step 3 — Remote Control Motherboard



- Locate the four 3.6 mm Phillips J#00 screws found under the back panel of the remote control and remove them.

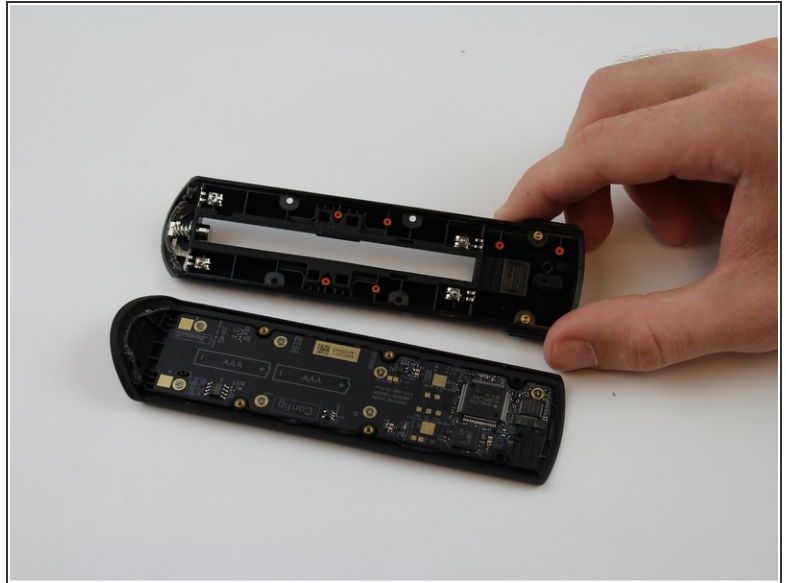
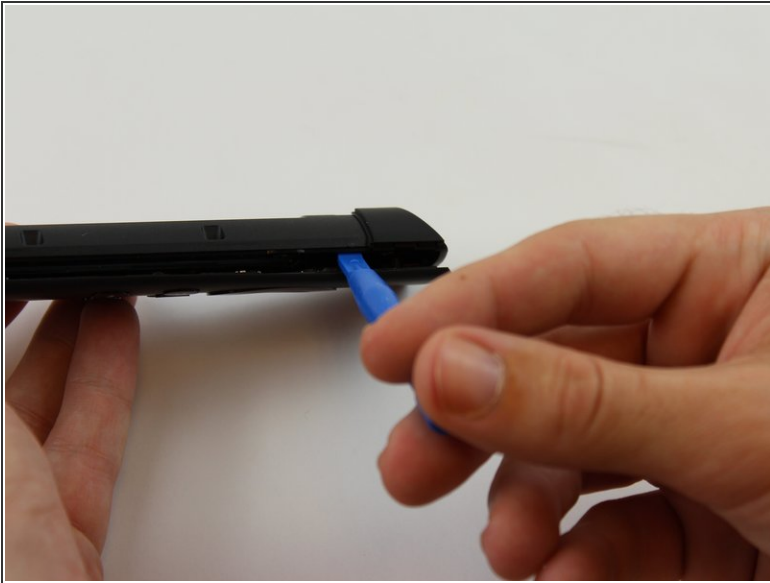
## Step 4



- Locate the bottom of the remote control.
- Place your thumb on the bottom part of the remote. Apply pressure as shown in the picture to release the back panel from the front of the case.

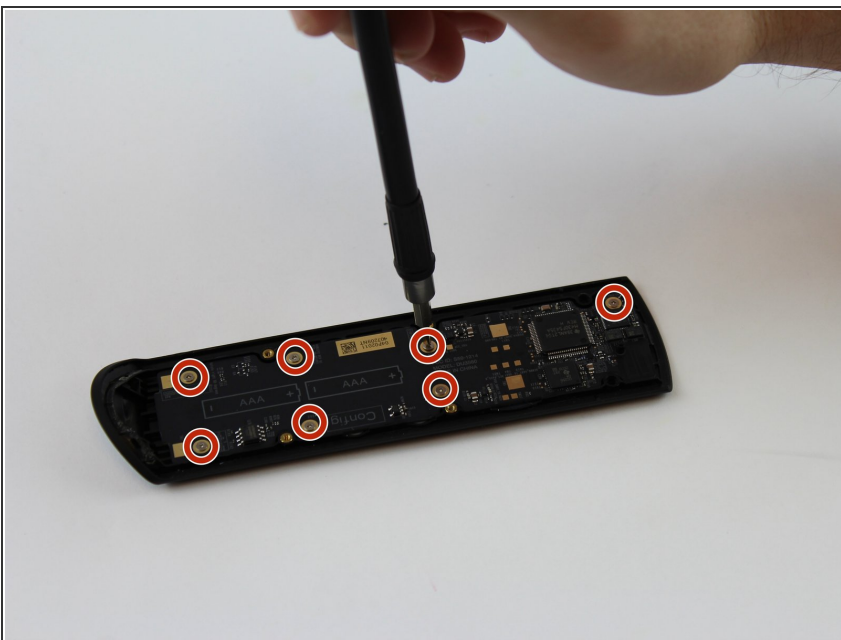


## Step 5



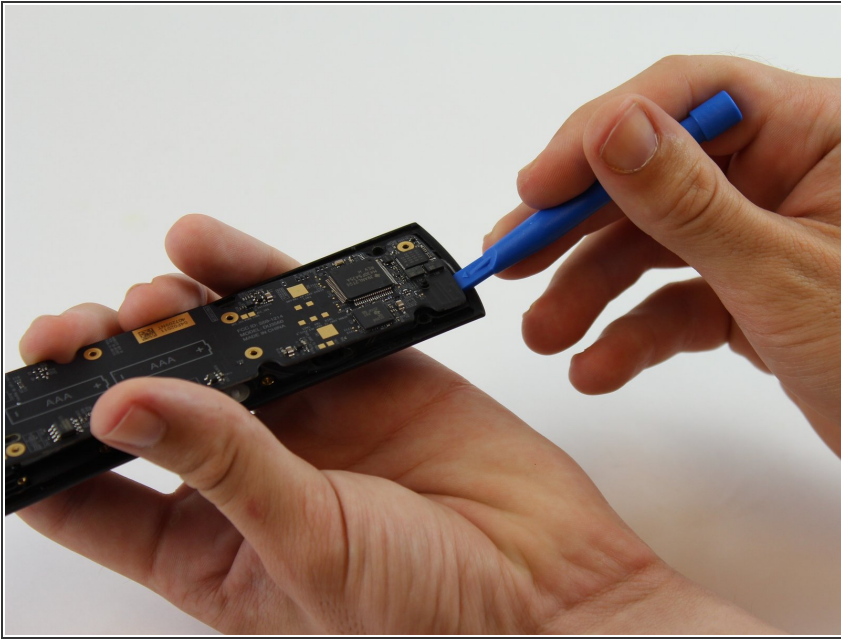
- Insert a plastic opening tool in the gap and apply some force to disconnect the two pieces away from each other.
- ⓘ Since there are two pins keeping the back of the case together with the motherboard, some force is needed to separate them.

## Step 6



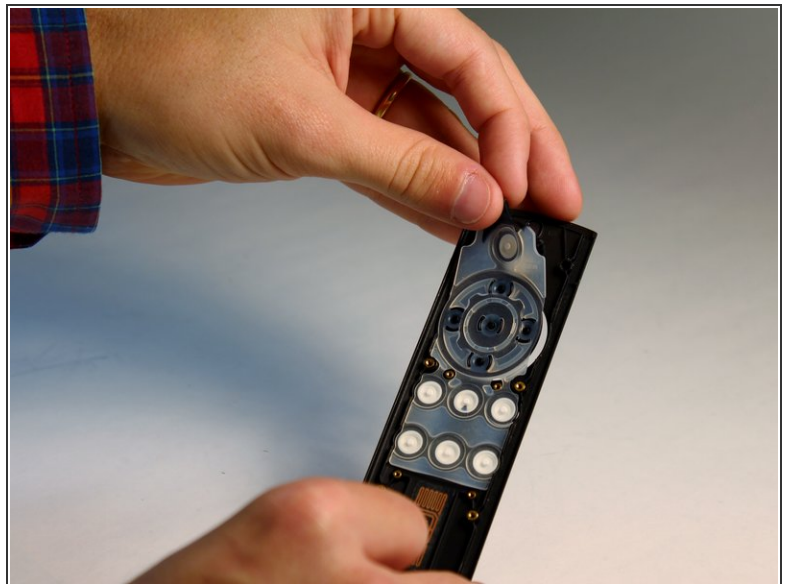
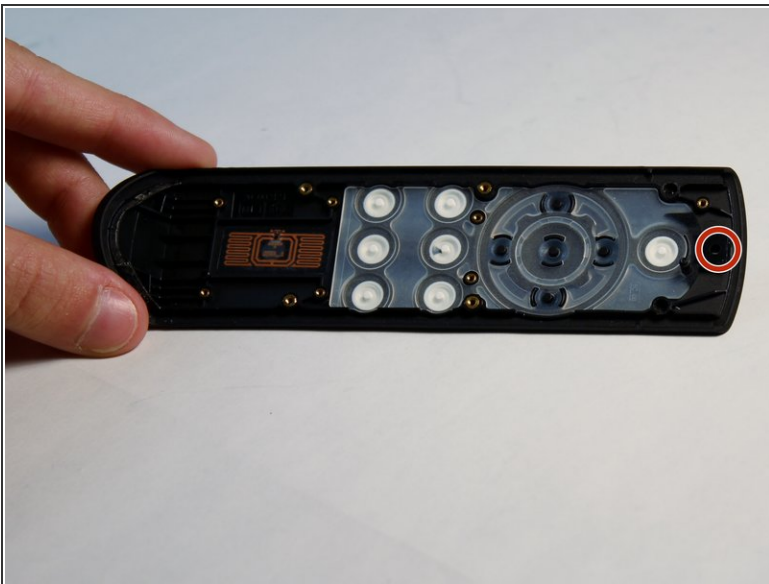
- Unscrew the seven 2.4 mm Phillips J#00 screws that connect the motherboard to the case.

## Step 7



- Place the plastic opening tool or your fingernail in the gap at the top end and lift the motherboard.

## Step 8 — Remote Control Button Panel



- Locate the black plastic tab at the top end of the button panel, grab it with your fingers and pull back to separate the button panel from the remote control's case.

To reassemble your device, follow these instructions in reverse order.

This document was generated on 2019-09-22 11:55:46 AM (MST).

