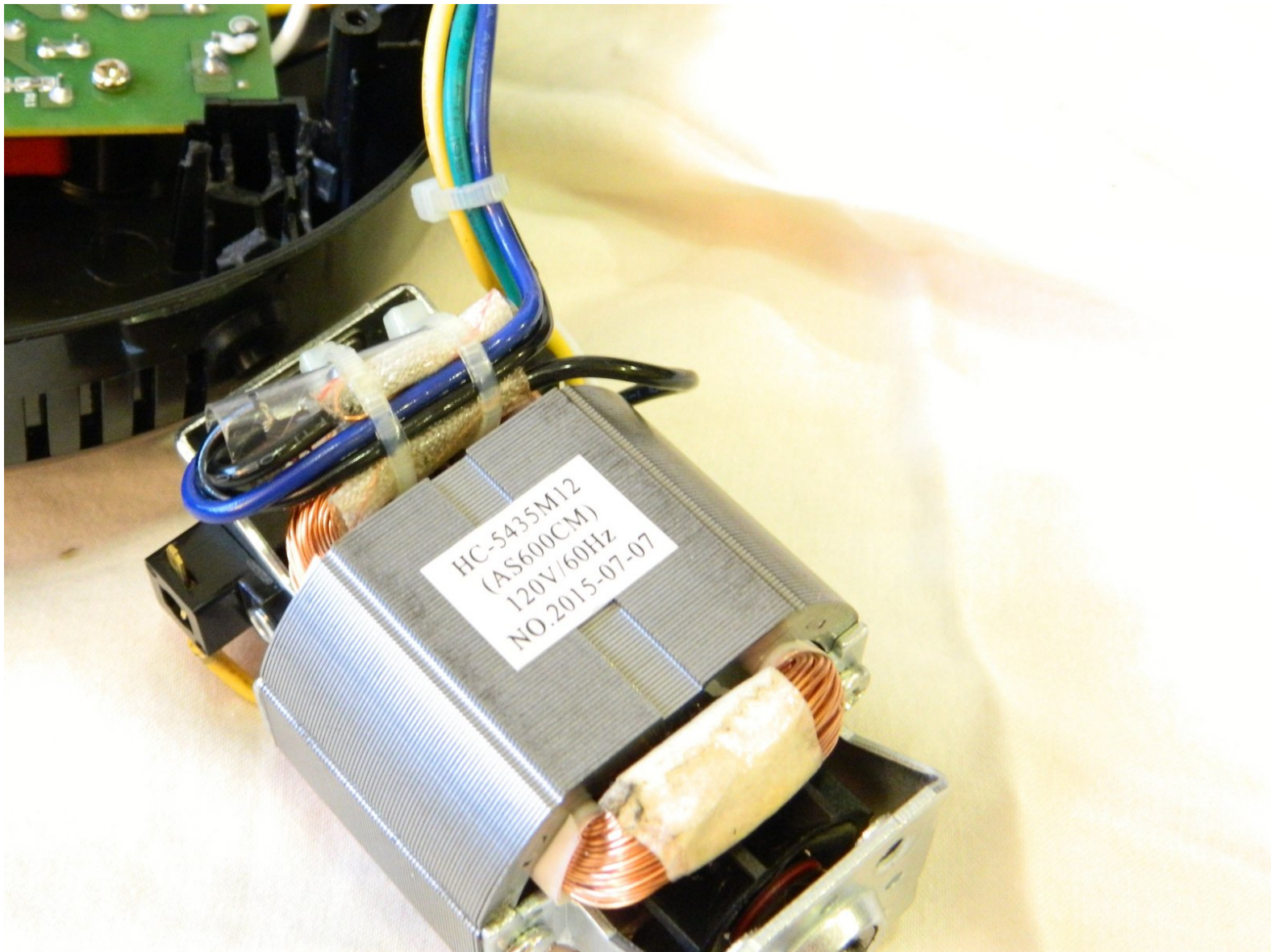




AmazonBasics B00Q3KFX8U Motor Replacement

This guide will show how to replace the drive motor on the AmazonBasics.

Written By: William Foley



INTRODUCTION

The drive motor is what powers the shredding teeth via the drive gears. The motor may burn out due to age or extended use. It is found attached to the main shredder housing holding the shredding teeth and the drive gears.

TOOLS:

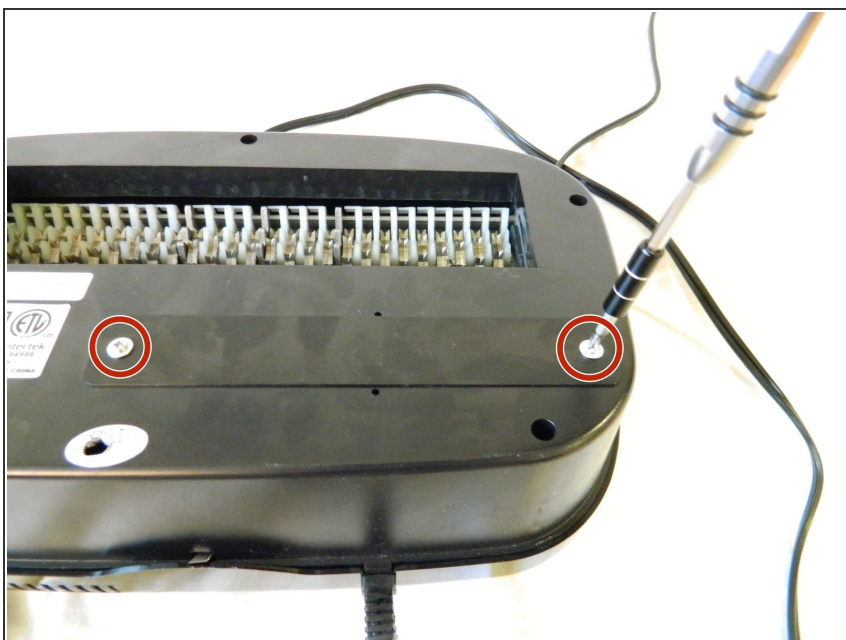
- [Phillips #2 Screwdriver](#) (1)
 - [Phillips #1 Screwdriver](#) (1)
 - [Metal Spudger](#) (1)
 - [Soldering Iron](#) (1)
 - [Solder](#) (1)
-

Step 1 — Drive Gear



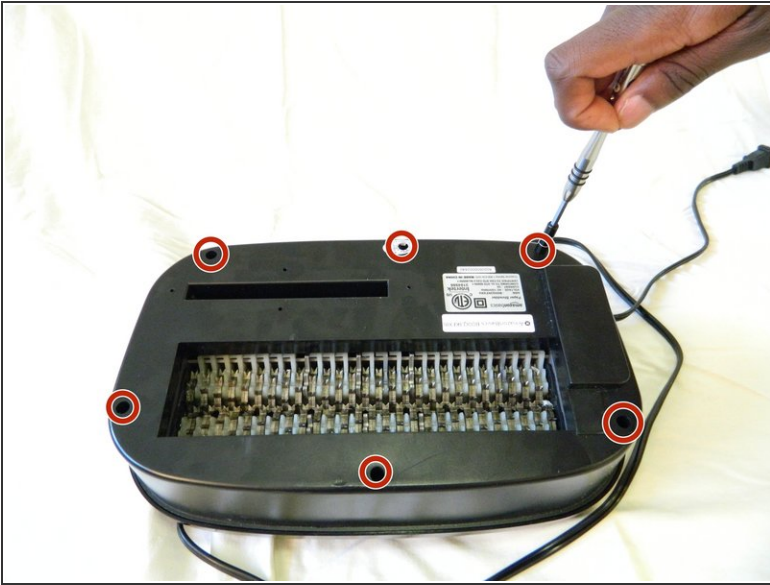
- Remove the shredder assembly from the paper scrap bin.

Step 2



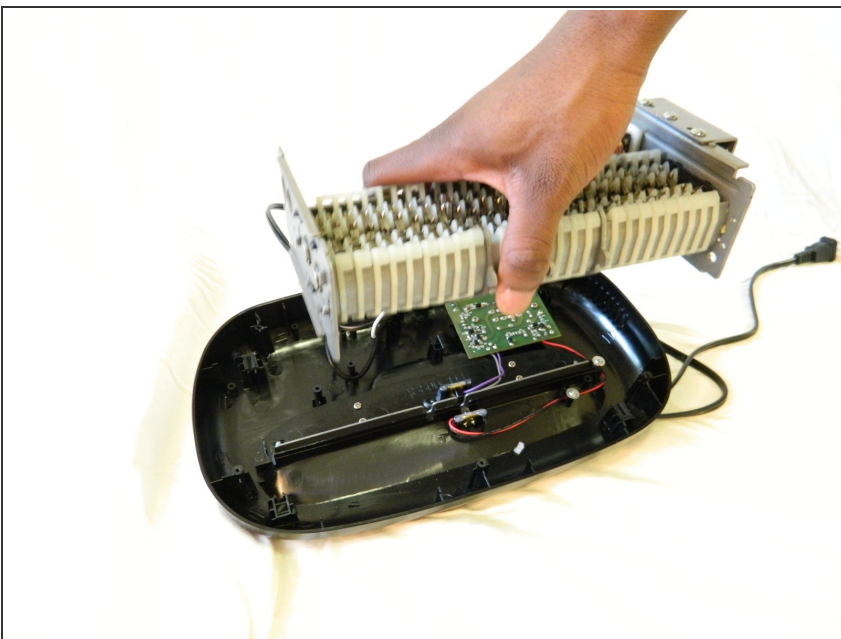
- Remove the two 10mm PH1 screws holding the small black panel in place.

Step 3



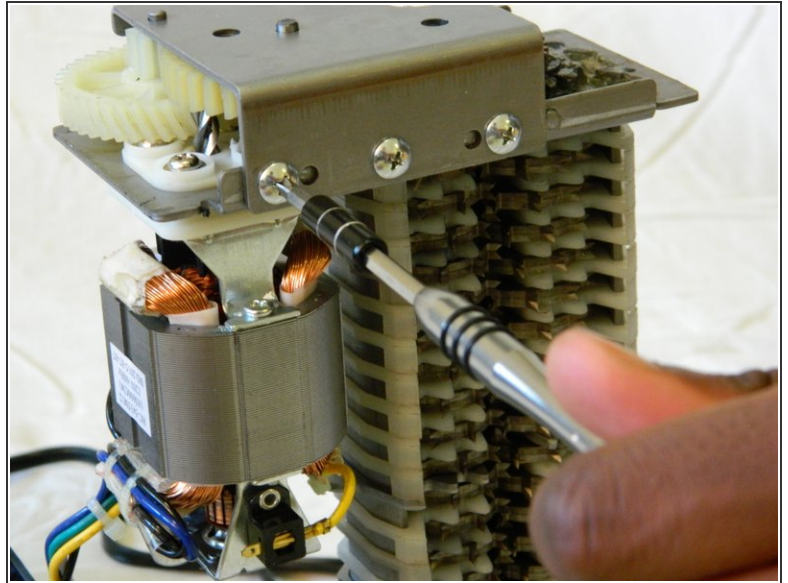
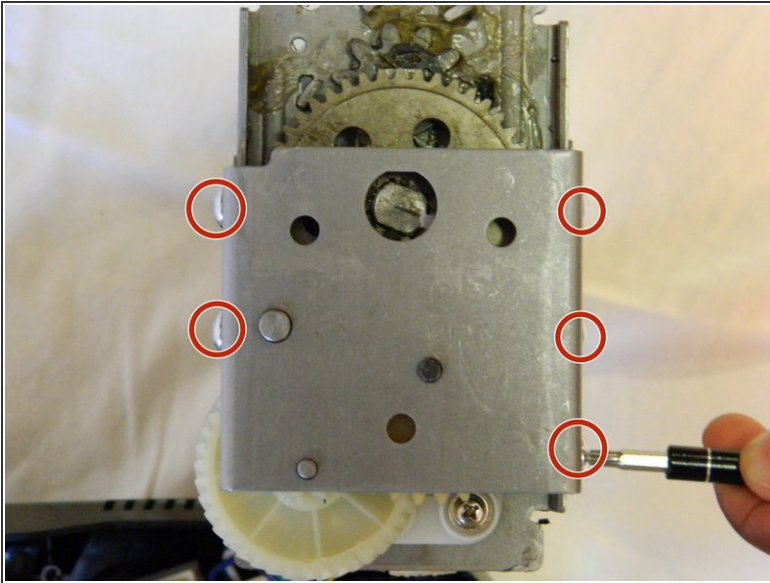
- Remove the six 14mm PH1 screws holding the bottom cover in place.
- Remove the cover by lifting straight upwards.
- ⓘ One of the screws will be hidden beneath a warranty sticker. Simply push the head of the screwdriver through the sticker to access the screw.

Step 4



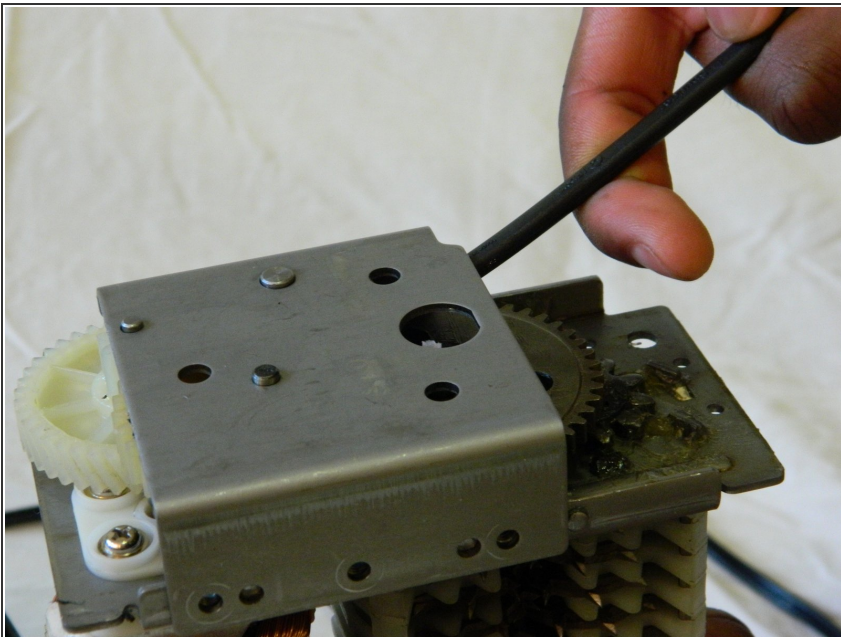
- Remove the blade/motor assembly from the top cover by lifting straight upwards. Do not disconnect any wiring just yet.
- ⚠ The blades are sharp. Coming into contact with them may result in injury.

Step 5



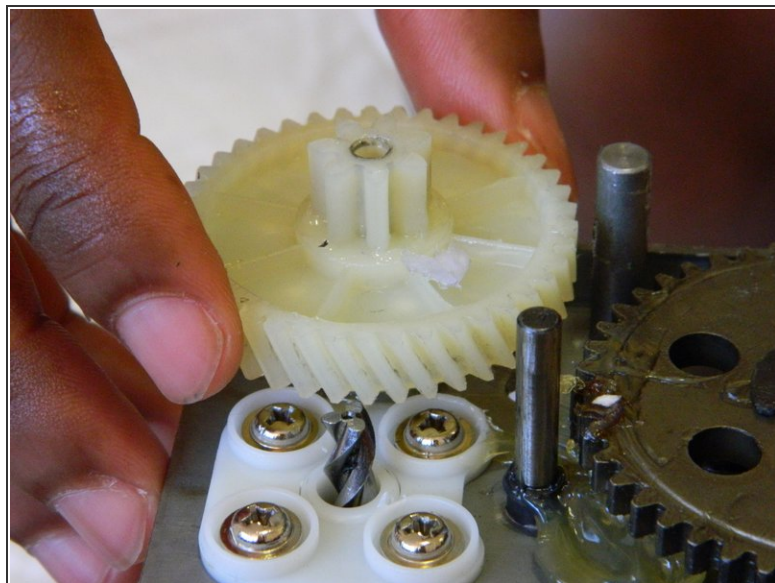
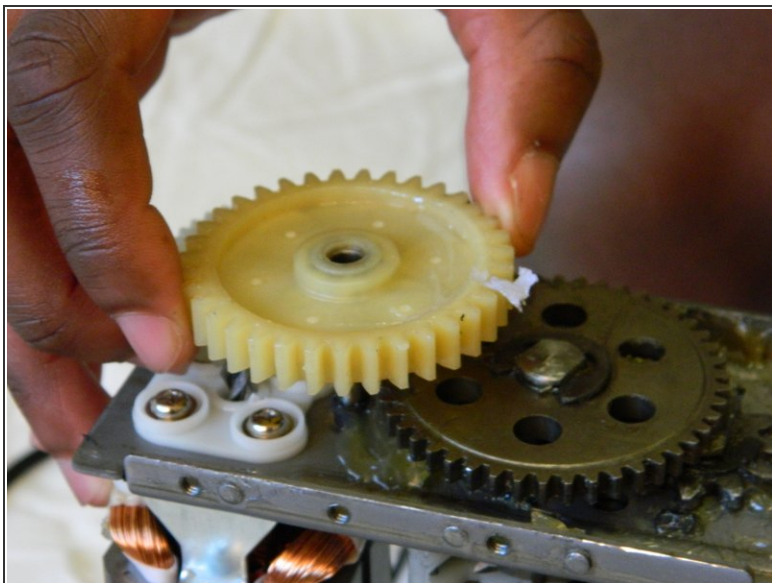
- Remove the five 8mm PH2 screws from the bracket holding the gears in place.

Step 6



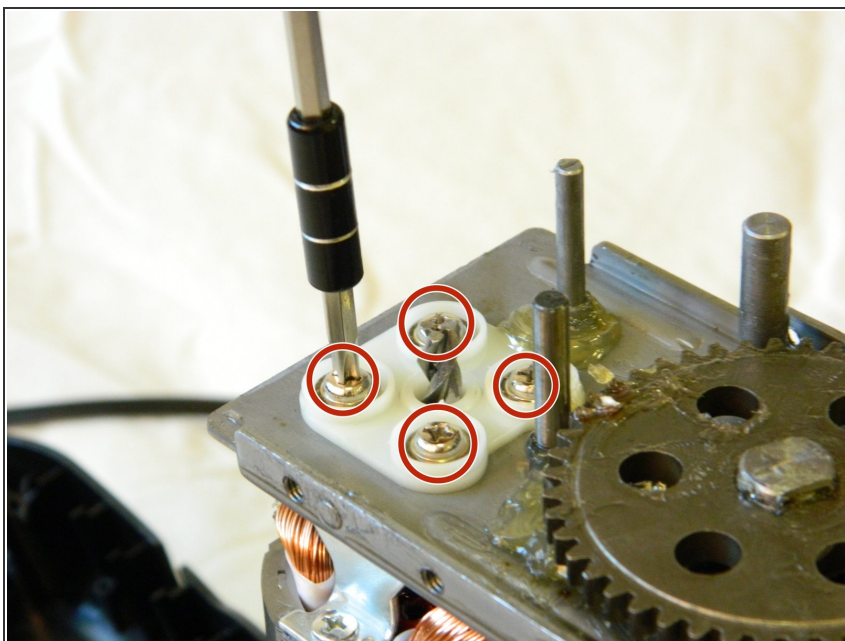
- Use a metal spudger to pry the bracket from the main shredder assembly.
- ⓘ If the bracket is attached too tightly for the spudger, carefully use a metal screwdriver to pry it loose.

Step 7



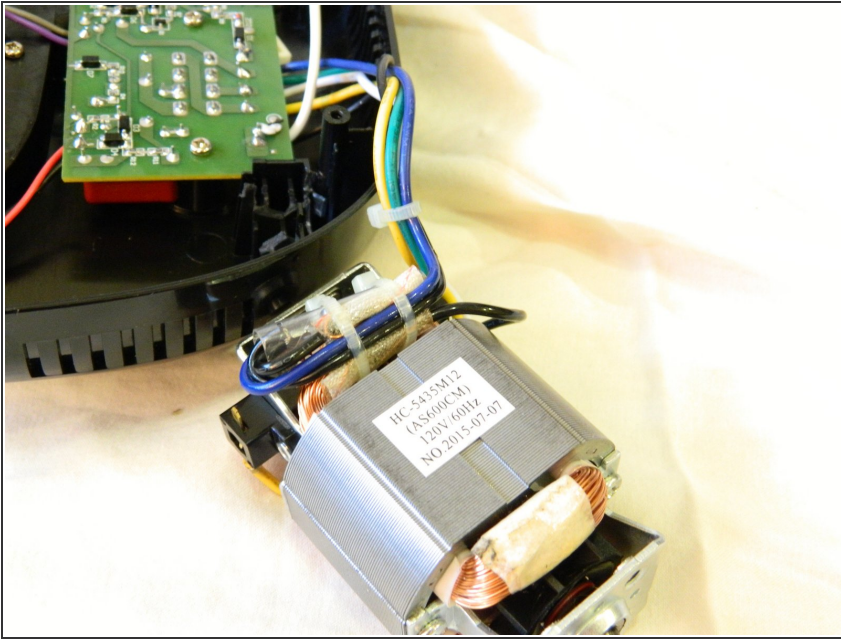
- Remove the two plastic drive gears from the shredder assembly by lifting straight upwards.

Step 8 — Motor



- Remove the four 18mm PH2 screws holding the motor to the main shredder assembly.

Step 9



- Disconnect the motor from the motherboard by either clipping the wires, or using a soldering iron to disconnect the wires directly at the board.
- ★ To reattach the motor, solder the wires back together, or to the motherboard depending on how you removed them.

To reassemble your device, follow these instructions in reverse order.