



American Era Electric Rice Cooker Teardown

This simple rice cooker may contain more than meets the eye. Lets see what's inside!

Written By: Travis Taylor





TOOLS:

- [Phillips #1 Screwdriver](#) (1)
- [Flathead 3/8" or 8 mm Screwdriver](#) (1)
- [Large Needle Nose Pliers](#) (1)

Step 1 — Rice Cooker Teardown



- Start with the rice cooker unplugged, on a flat surface.

Step 2 — Remove Pot and Lid



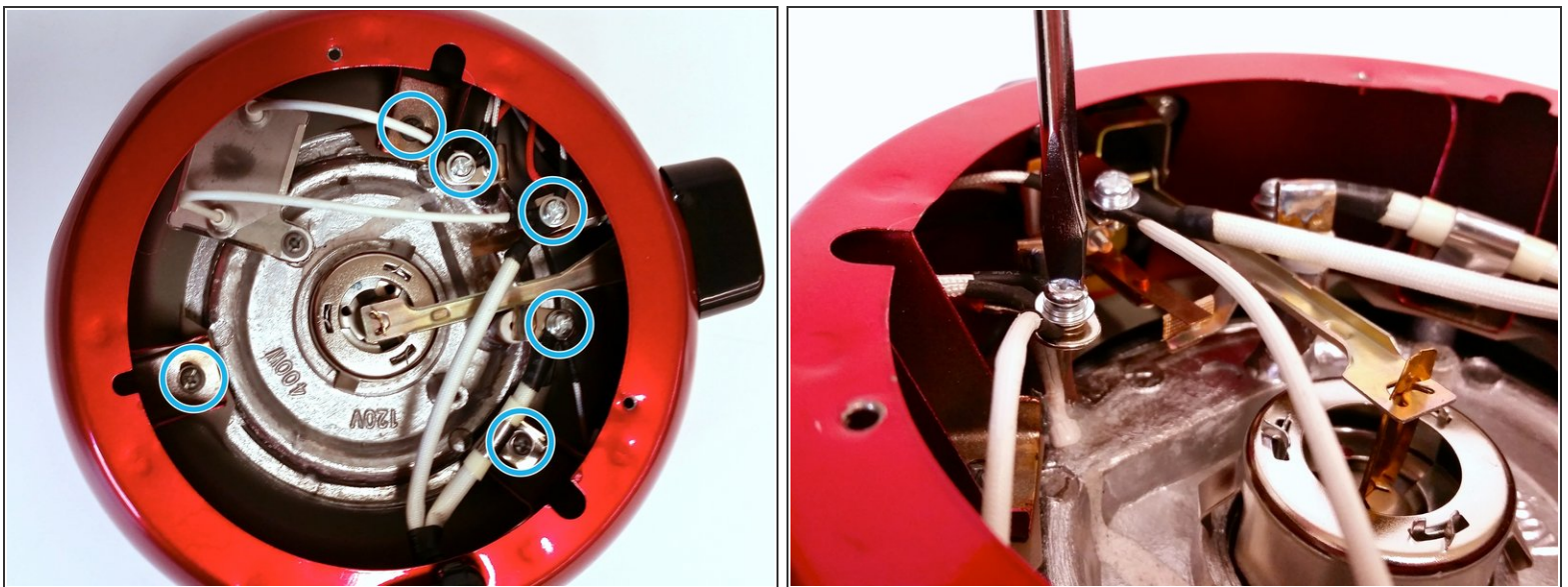
- Remove the lid and pot and turn upside down.

Step 3 — Remove Bottom Plate



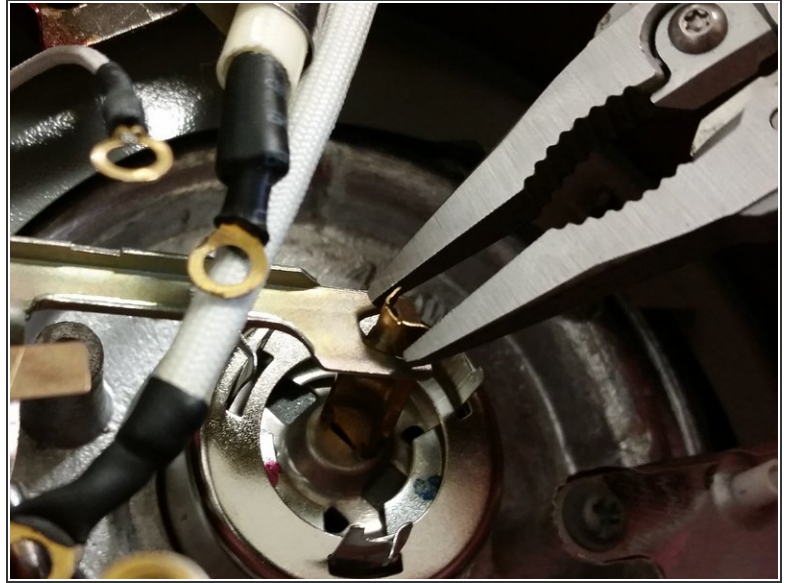
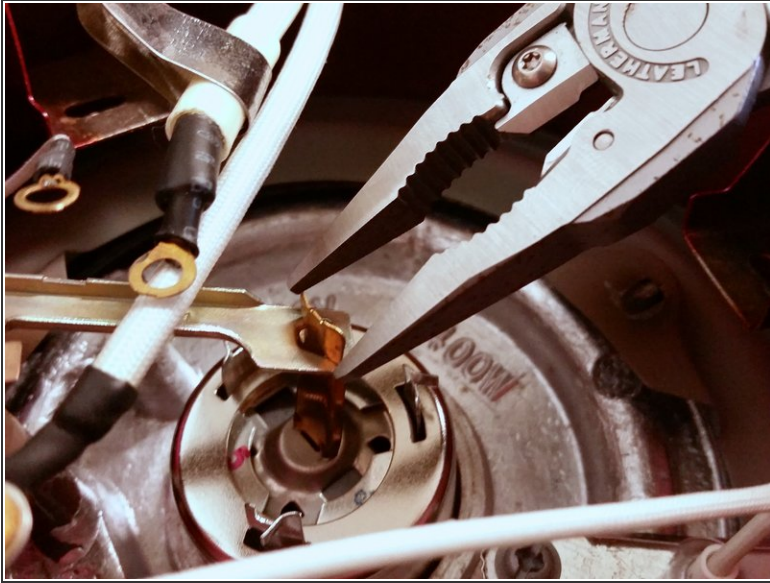
- Use a Phillips #1 screwdriver to remove the two screws.
- Remove the bottom plate by lifting one of the rubber feet.

Step 4 — Remove Internal Screws



- We're inside! Here's our first look at the circuitry. Let's take it apart.
- Use a 3/8" or 8 mm flathead screwdriver to remove these six screws.

Step 5 — Bend Tab



- Find the metal tab that connects the center button to the switch lever.
- Use pliers to bend the metal tab into a U shape.
- Align the tab with the slot so that it falls through.

Step 6 — Remove Heating Element



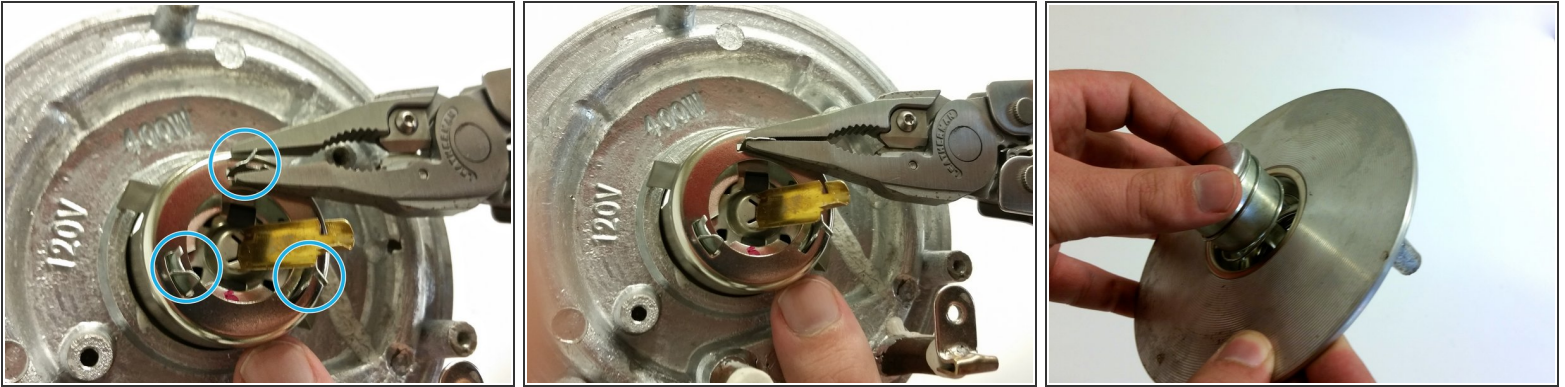
- Turn the rice cooker right-side up.
- Grab the center button and pull the heating plate upward. The gray metal ring should come out with it.

Step 7 — Remove Temp. Sensor



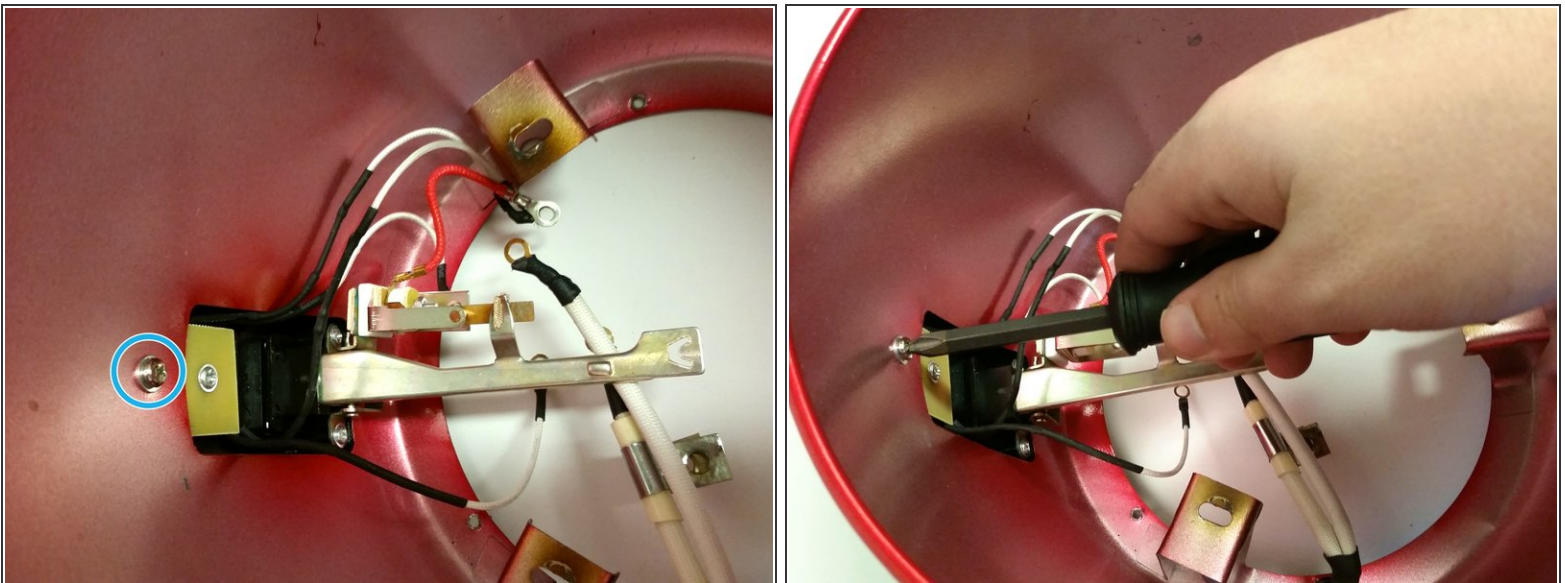
- Use a Phillips #1 screwdriver to remove the screw connecting the temperature sensor to the heating element.
- Remove the temperature sensor.

Step 8 — Remove Center Button



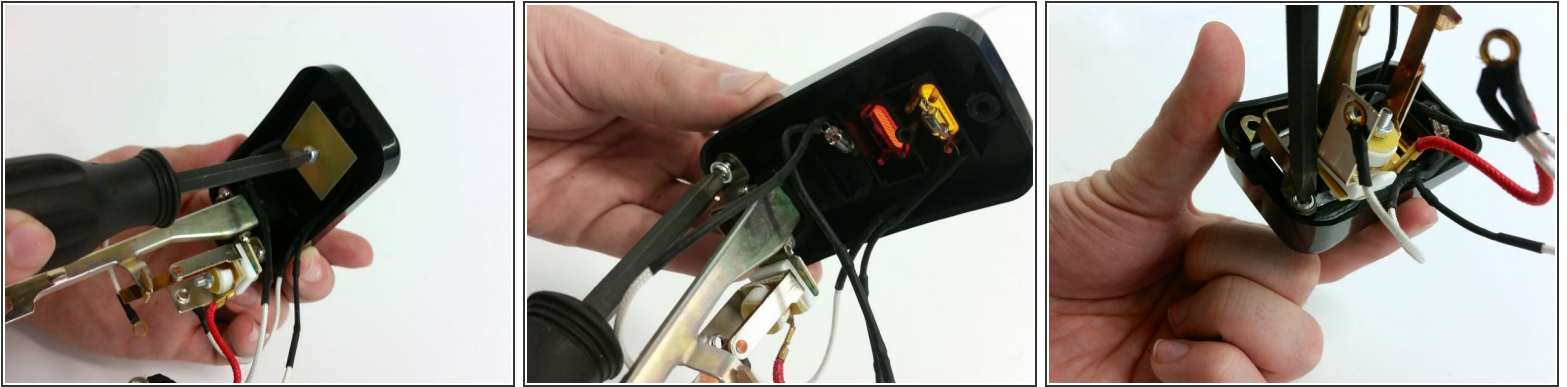
- Three bent metal tabs connect the center button to the heating element. Use pliers to flatten these three tabs.
- Remove the center button from the heating element.

Step 9 — Remove Control Panel



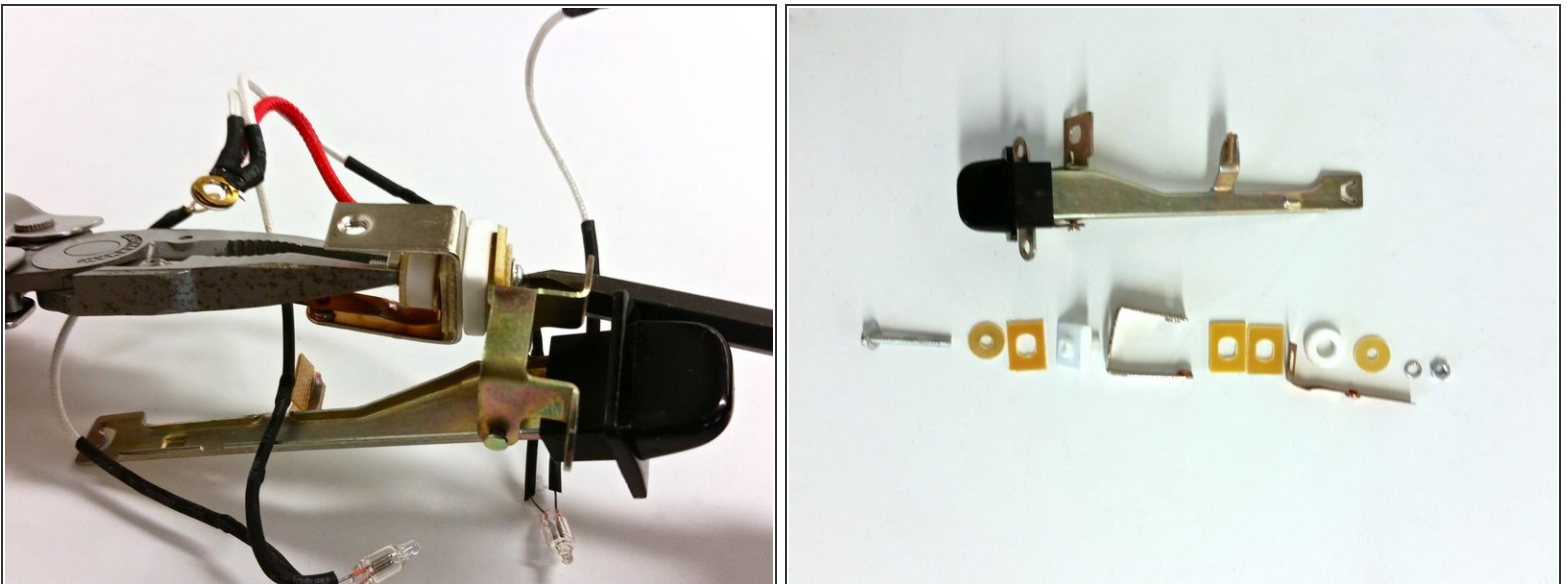
- Use a Phillips #1 screwdriver to remove the screw that secures the control panel.
- Remove the control panel from the outside of the rice cooker.

Step 10 — Disassemble Control Panel



- Use a Phillips #1 screwdriver to remove the screw securing the rectangular fiberglass plate. This should free the two light bulbs.
- Use a Phillips #1 screwdriver to remove two screws securing the switch lever to the control panel plate. Remove the switch lever.

Step 11 — Disassemble Switch



- Use pliers or hex wrench to hold the nut while using a Phillips #1 screwdriver to remove the screw holding the switch assembly together.
- Pull the switch assembly apart into its parts. Careful not to lose any of these small parts!

Step 12 — All Done!



- And here we have it: a fully disassembled rice cooker.