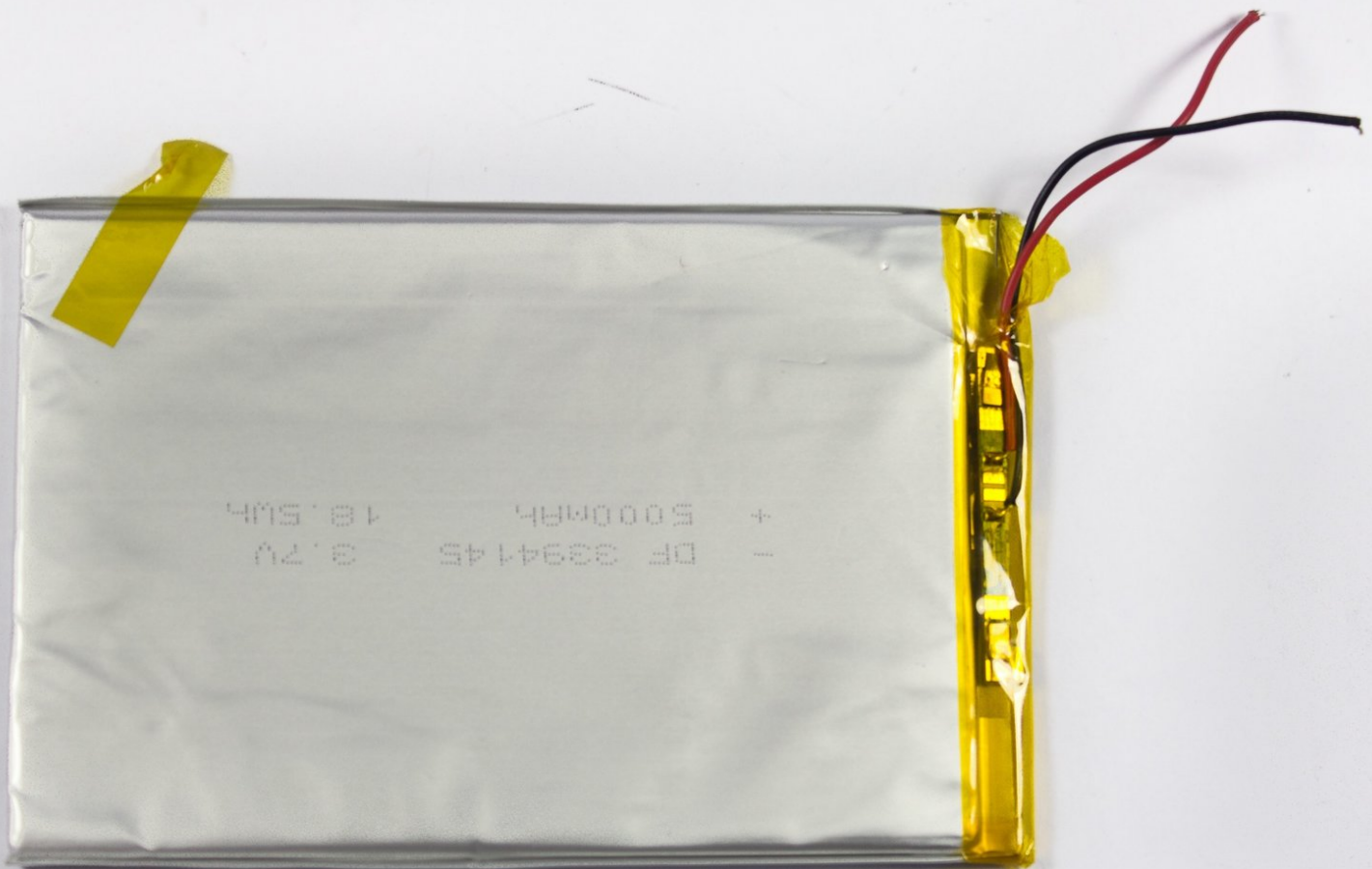




Android Tablet Nobis NB09 Battery Replacement

Open the Nobis NB09 and gain access to the battery, in order to replace dry or damaged battery.

Written By: Jackson McAdams



INTRODUCTION

Some possible symptoms which could show that your tablet's battery is dying include:

- Battery is at a low percentage even after a fresh charge.
- The tablet dies when it still has a lot of battery life.
- The tablet becomes hot after using for a short period of time.

If you experience any of these symptoms then it is likely the culprit is a failing battery. Here is a guide of Android Tablet Nobis NB09 Battery Replacement.




TOOLS:

- [Spudger](#) (1)
 - [iFixit Opening Tools](#) (1)
 - [64 Bit Driver Kit](#) (1)
 - [Soldering Iron](#) (1)
-

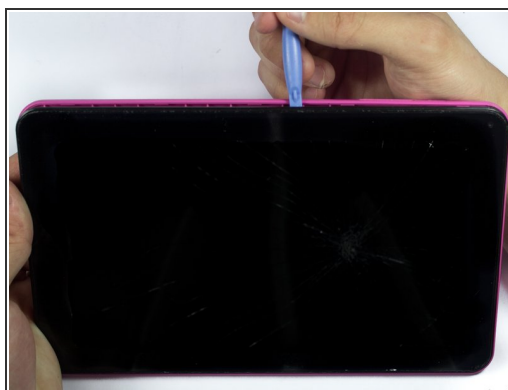
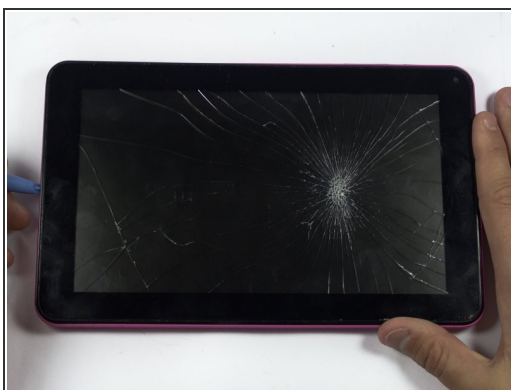
Step 1 — Battery



 Before beginning this process, make sure the device is powered off.

- Locate and remove the screws holding the case together.
- Place the screws into a container with a lid so they are not lost.

Step 2



- Use the Spudger to loosen and pry off the back plate (pink piece).

Step 3



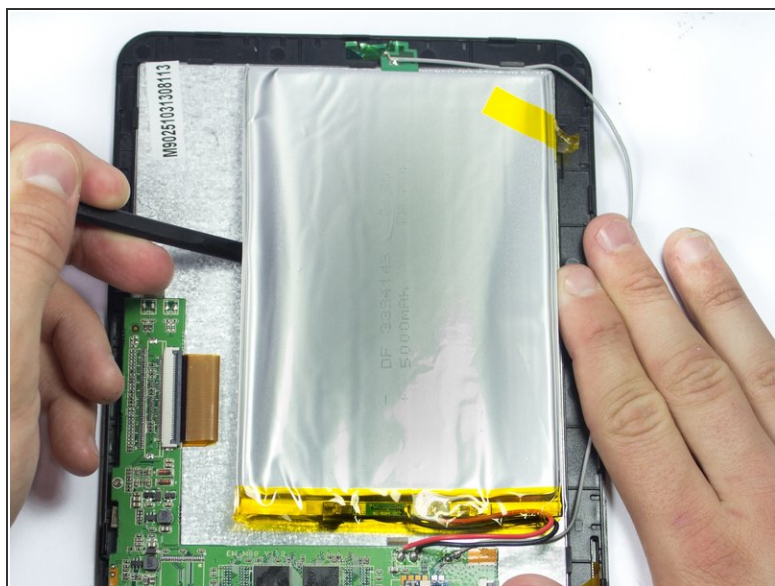
- Remove the adhesive covering the circuit board as shown in the photos.

Step 4



- Use the Soldering Iron to remove the black and red wires from the circuit board.
- The black wire is the ground and the red wire is battery plus.
- Make sure these same wires are reconnected onto the proper terminals on the circuit board.

Step 5



- Gently loosen adhesive under the battery to avoid damaging it.

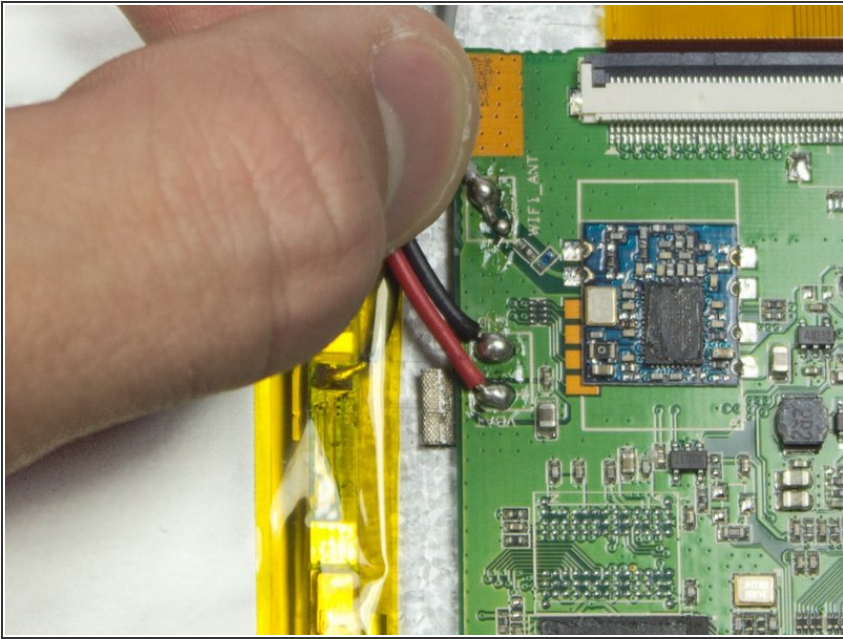
⚠ Caution battery is soft and will bend very easily.

Step 6



- Dispose of old battery properly, we recommend that it is taken to a certified battery recycling store.

Step 7



- Using the Soldering Iron, solder the leads of the new battery into place as shown in the photo.

Step 8



- Using new adhesive, apply to the back of the fresh battery and place on device as shown.
- Apply new electrical tape to the circuit board as shown in figure No. 2 to insulate it from the case.

Step 9



- Close tablet and secure using the screws from Step 1.

To reassemble your device, follow these instructions in reverse order.