



Android tablet Nobis NB09 Camera Replacement

Use this guide to replace a faulty camera on Nobis NB09 tablet.

Written By: Sergey Kasyanov



INTRODUCTION

This guide provides essential information and steps on how to replace a faulty camera, including a step by step disassembling and removing instructions. Follow steps 1-3 to open the device. Ignore steps 4 and 5 and go straight to step 6 after doing so.



TOOLS:

- [iFixit Opening Tools](#) (2)
- [Spudger](#) (1)
- [Tweezers](#) (1)
- [Phillips #00 Screwdriver](#) (1)



PARTS:

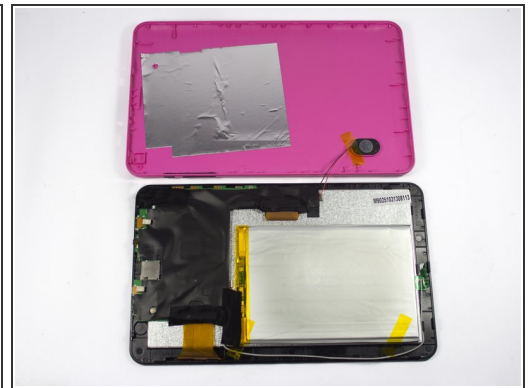
- [camera](#) (1)

Step 1 — Back Cover




- Remove the two 00 Phillips screws located in the right hand side of the tablet.

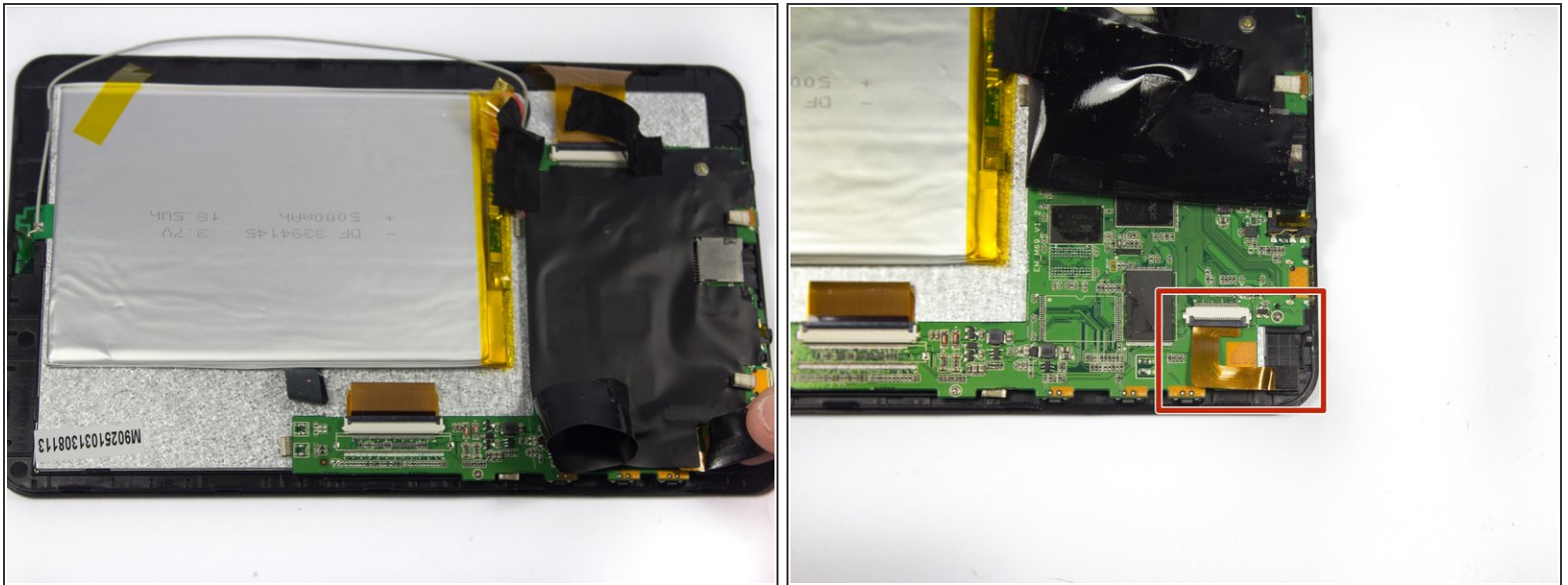
Step 2



- Use plastic opening tools to loosen and pry off the back plate (pink piece).

 When removing the cover, be careful not to pull too hard as there are wires connected to the motherboard attached to the back cover.

Step 3 — Camera



⚠ It is recommended that a grounding bracelet be used in order to avoid damage to the device's circuits through ESD (Electro-Static Discharge)

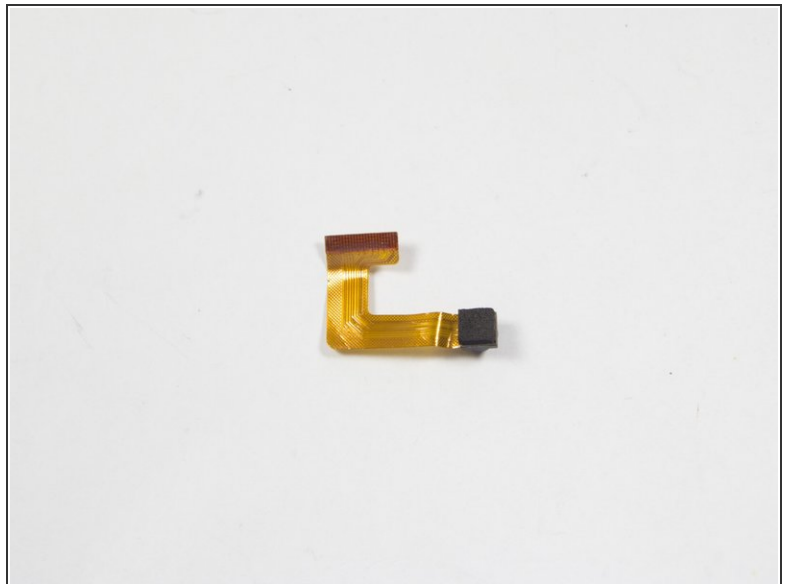
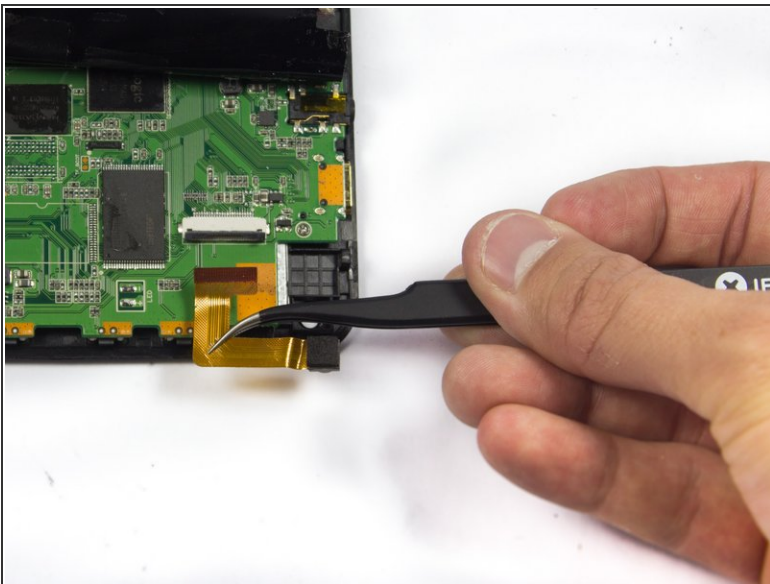
- Start by removing the electrical tape covering the camera, located at the top left corner of the device.
- ⓘ Remove enough tape to expose the ZIF connector and the camera.

Step 4



- Lift up the black plastic lock on the ZIF connector with tweezers.
- ⓘ ZIF stands for Zero Insertion Force connector. Make sure the connector is unlocked completely.

Step 5



- Gently remove the camera by removing the power cord with tweezers. The camera should release easily: do not twist or pull too hard.
- Replace the camera with a new one.

To reassemble your device, follow these instructions in reverse order. Do not forget to put electrical tape back in place.