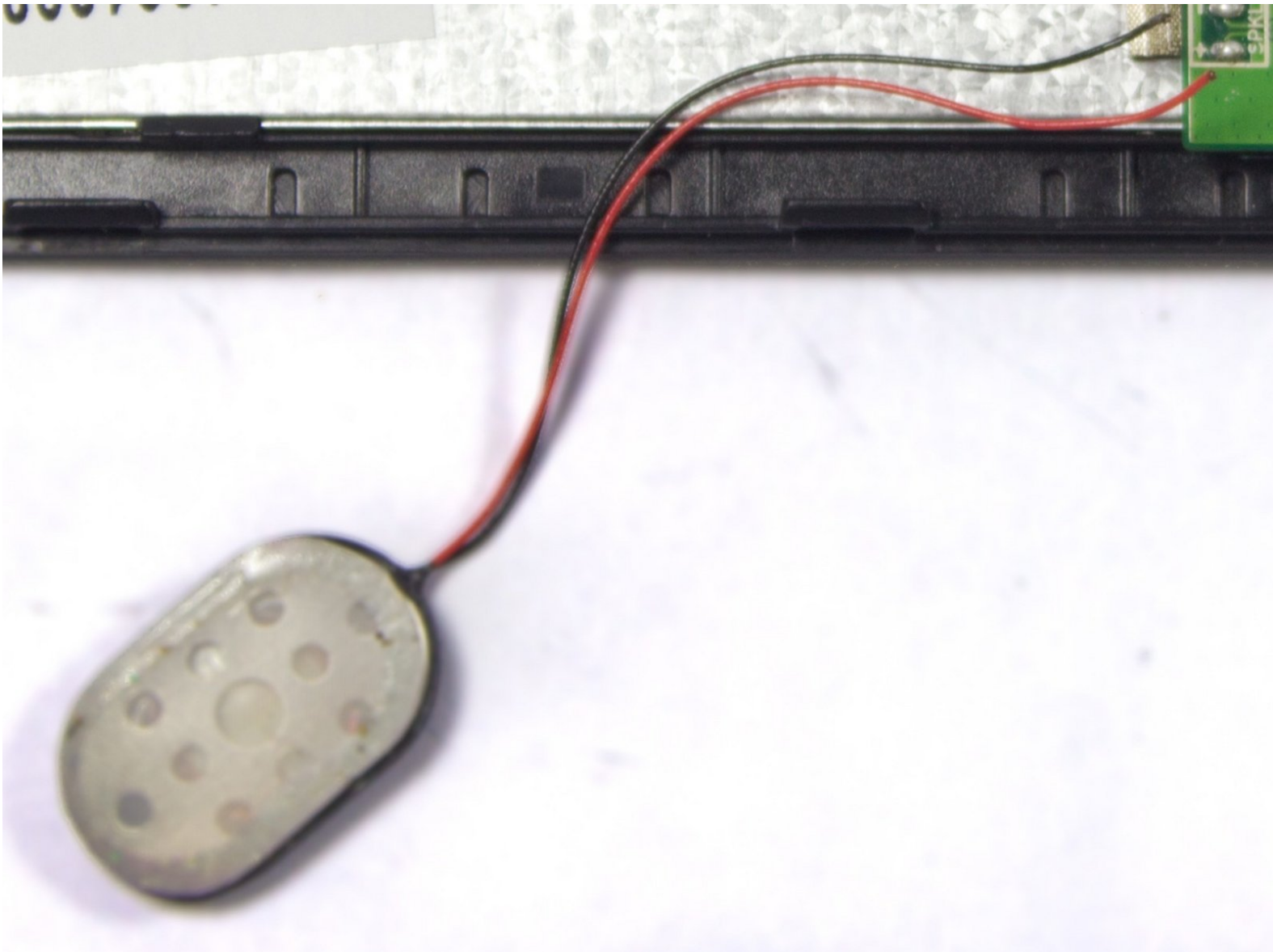




Android tablet Nobis NB09 Speaker Replacement

Use this guide to replace a broken speaker on Nobis NB09 tablet.

Written By: Sergey Kasyanov



INTRODUCTION

Using this guide will help you to successfully replace a faulty speaker on your tablet. Tablet needs to be disassembled first, then speaker has to be soldered in place. Follow steps 1-3 to open the device. Ignore steps 4 and 5 and go straight to step 6 after doing so.



TOOLS:

- [Soldering Iron](#) (1)
- [iFixit Opening Tools](#) (2)
- [Electrical Tape in 6 Assorted Colors](#) (1)
- [Spudger](#) (1)
- [Phillips #00 Screwdriver](#) (1)



PARTS:

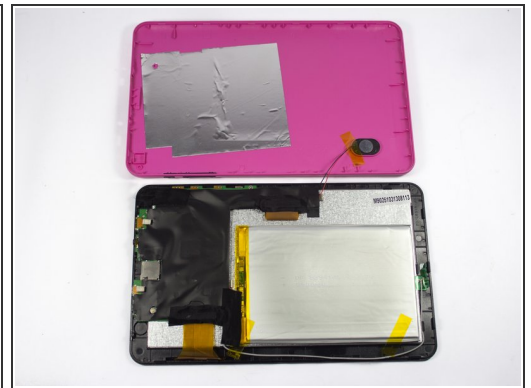
- [Speaker](#) (1)

Step 1 — Back Cover



- Remove the two 00 Phillips screws located in the right hand side of the tablet.

Step 2

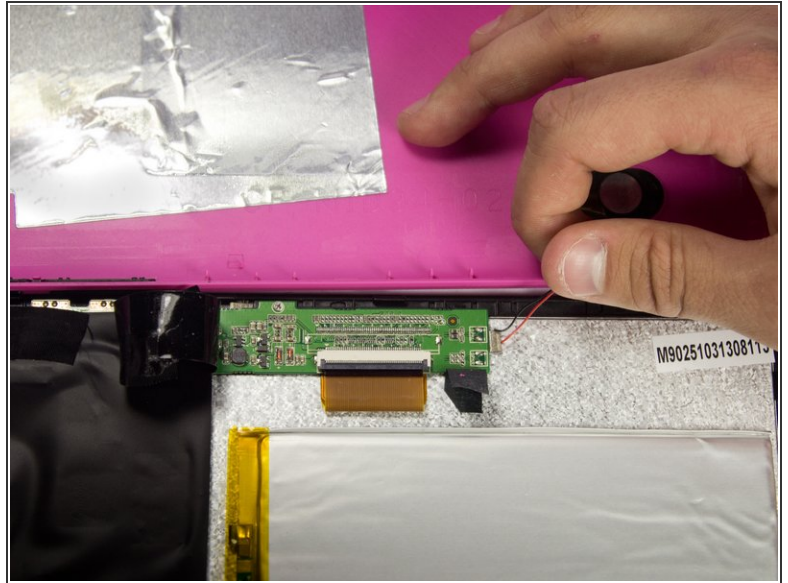
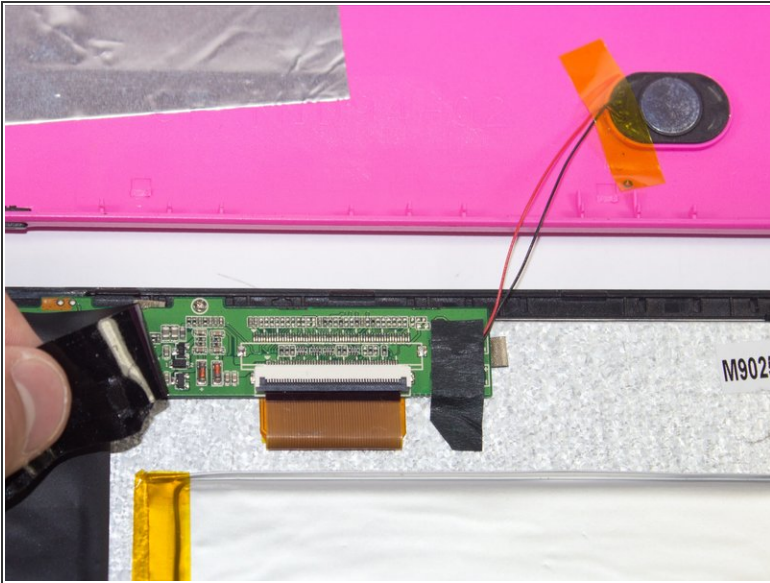



- Use plastic opening tools to loosen and pry off the back plate (pink piece).



When removing the cover, be careful not to pull too hard as there are wires connected to the motherboard attached to the back cover.

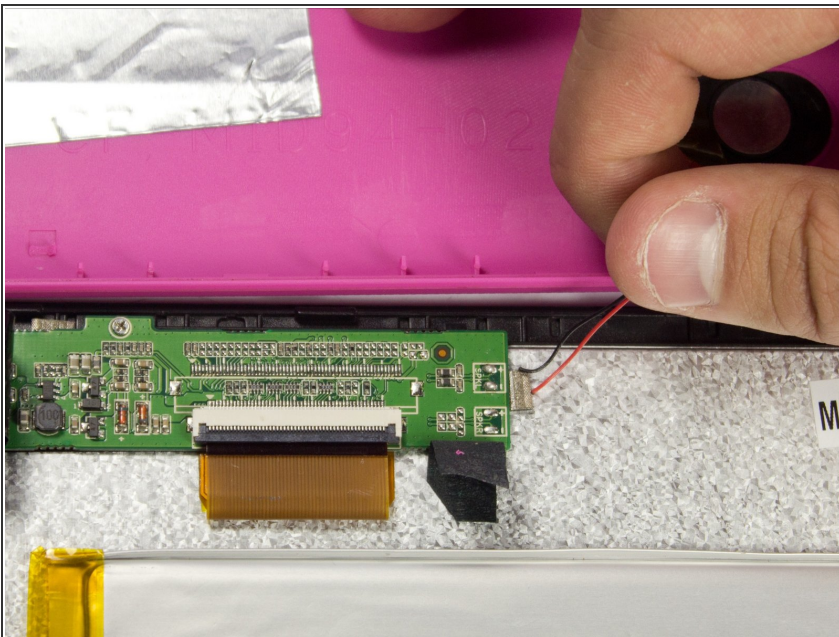
Step 3 — Speaker




 It is recommended that a grounding bracelet be used in order to avoid damage to the device's circuits through ESD (Electro-Static Discharge).

- The speaker is located on the top left hand side of the tablet.
- Remove the electrical tape covering the connections to expose the wires.

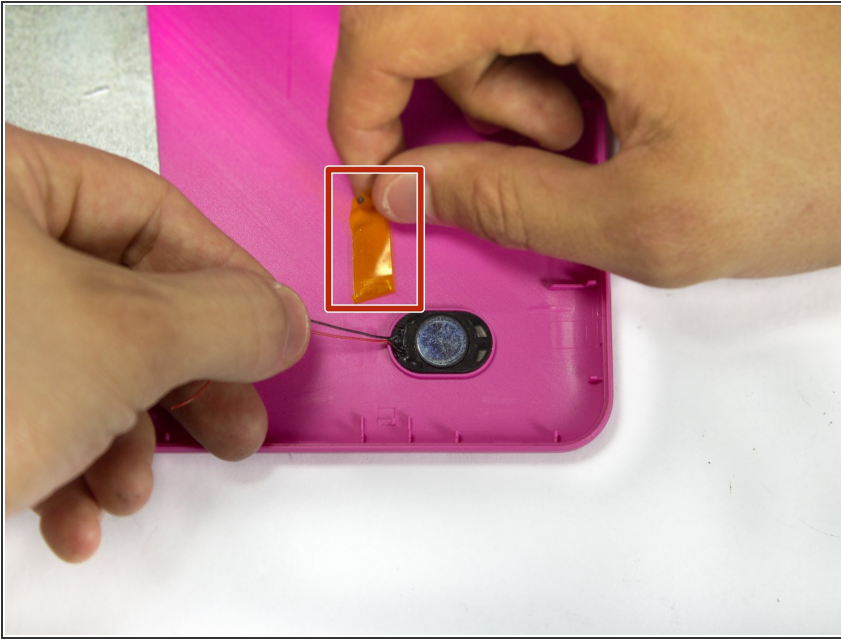
Step 4



- Disconnect the faulty speaker by desoldering the two wire connections.

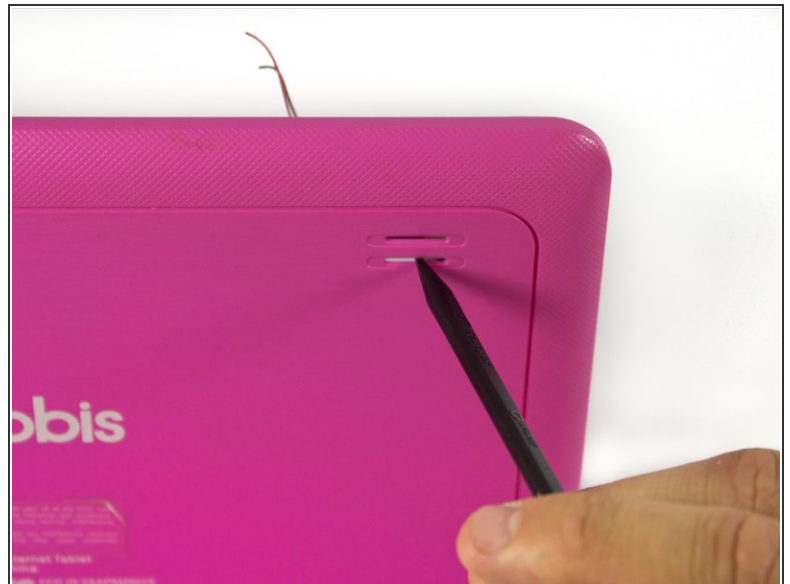
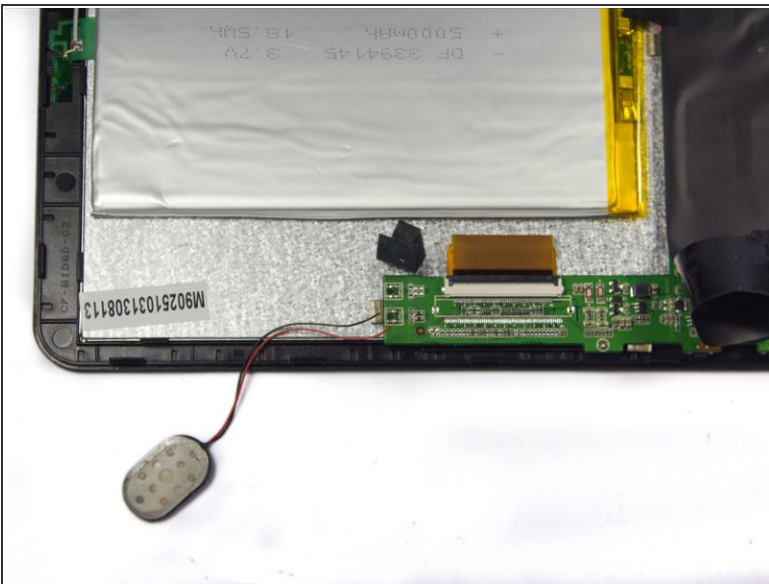
 Make sure to not damage the motherboard.

Step 5



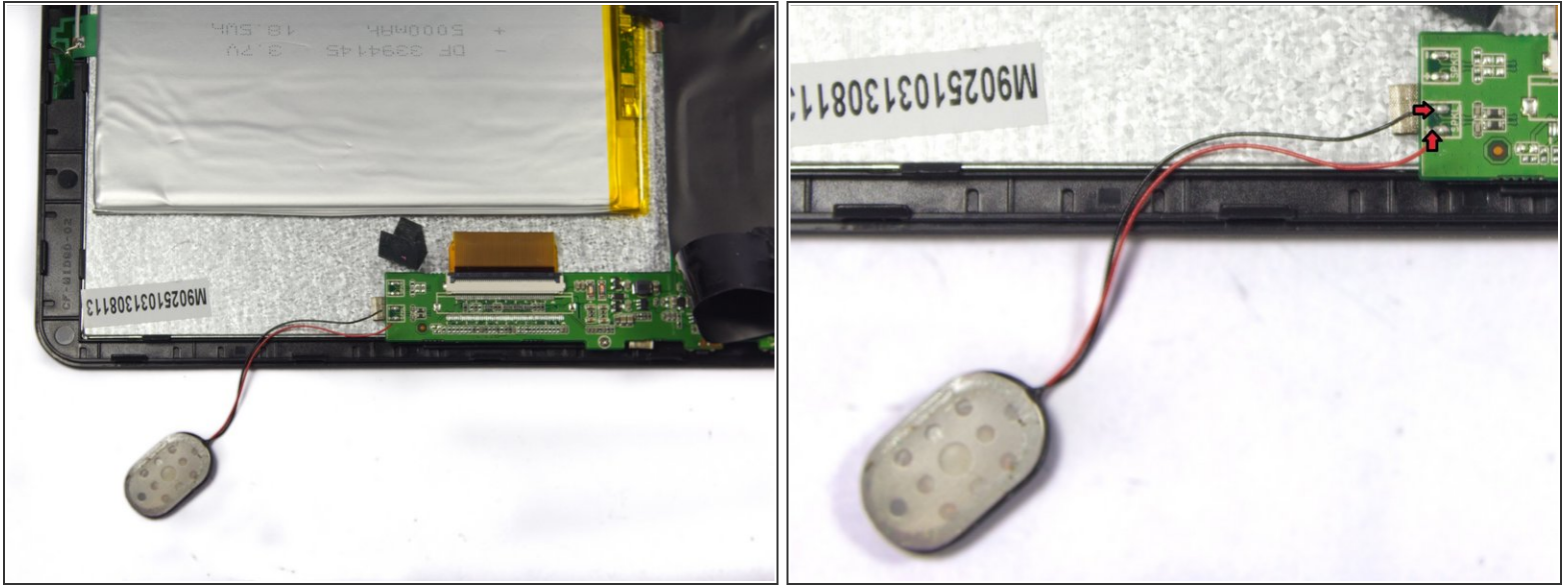
- Remove the tape holding the speaker in its socket.

Step 6



- Remove the speaker from its socket. Placing the speaker to the side of your device will give you more freedom.
- ⓘ Gently pushing the speaker from the back side of the cover with a pointy edge of spudger tool will make this step easier.

Step 7



- Use a soldering iron to extract excess solder using a desoldering braid.
- Solder the speakers wires back to the motherboard.
- ⓘ Review the [iFixit soldering guide](#) for help with soldering.
- ⚠ Connect red wire to the positive terminal marked "+", and the black wire to the negative terminal marked "-".

To reassemble your device, follow these instructions in reverse order. Do not forget to put electrical tape back in place.