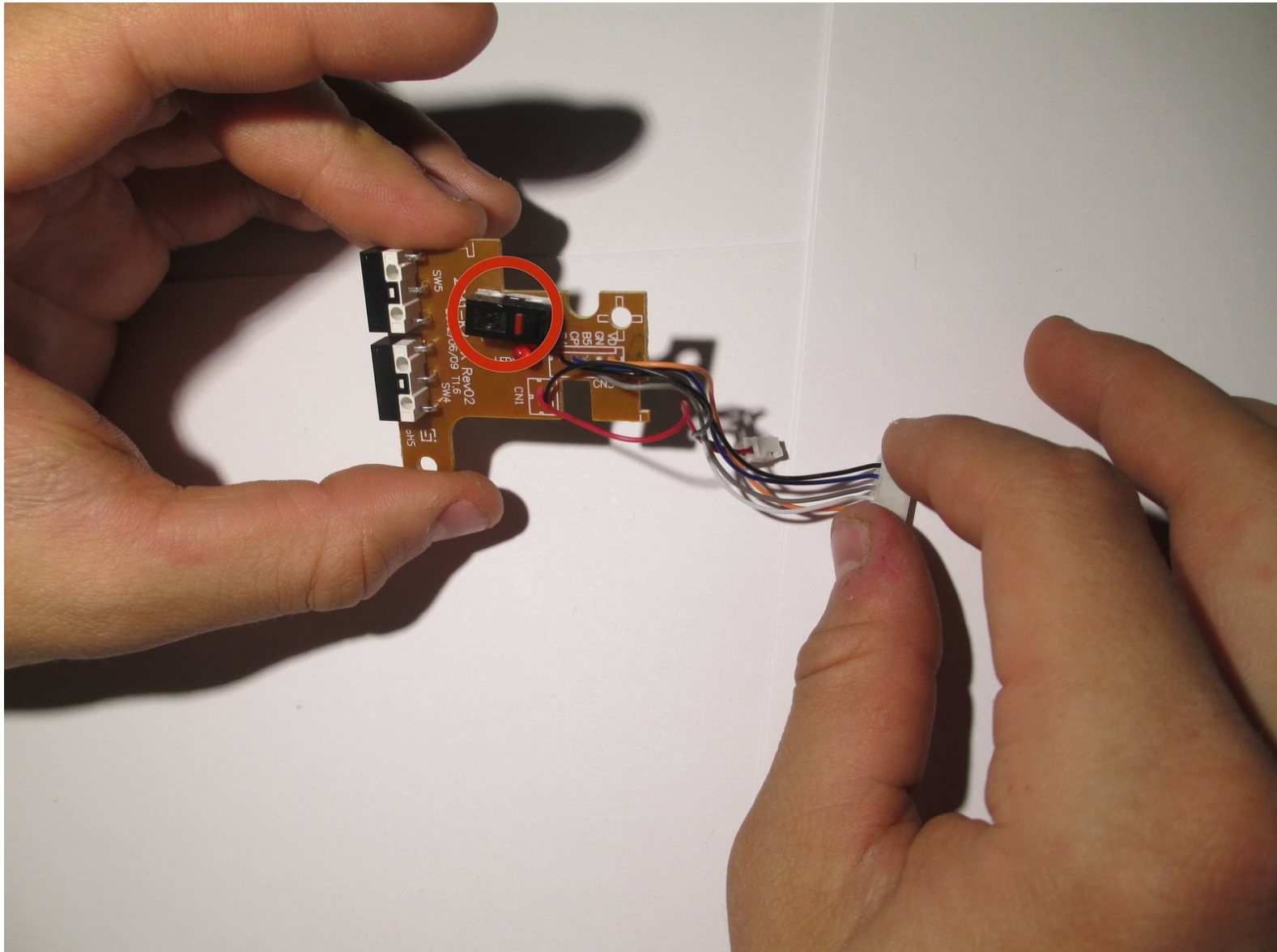




# Anker 2.4G Wireless Mouse DPI button Replacement

In this guide we will be replacing the DPI button, which controls mouse sensitivity.

Written By: Colin

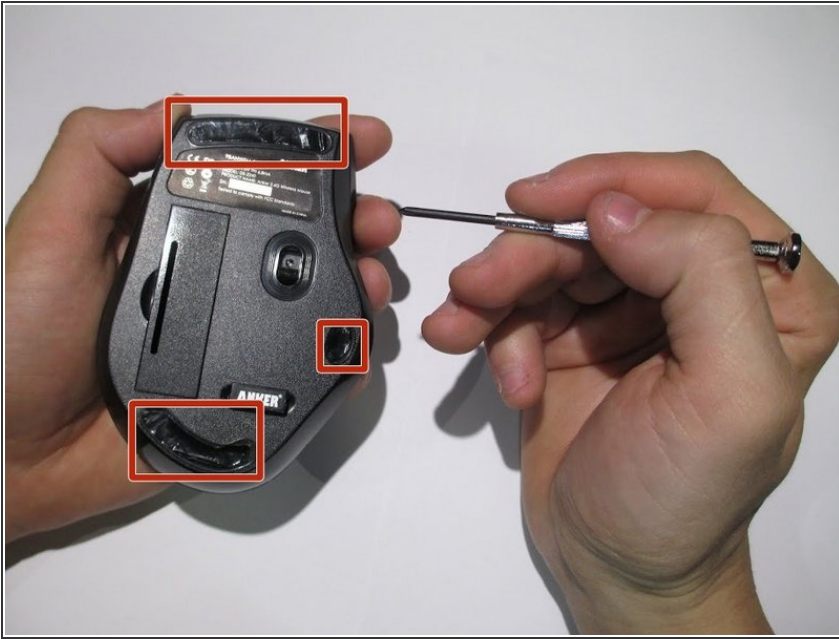




## TOOLS:

- [Phillips #0 Screwdriver](#) (1)
- [Soldering Iron](#) (1)
- [Desoldering Braid](#) (1)

## Step 1 — DPI button



- Use screwdriver to pry off the stickers marked in red to reveal the location of the 4 screws.

## Step 2



- Remove the 4 screws to continue.



### Step 3




- Pry the center of the mouse apart to separate the upper and lower housing of the boards.

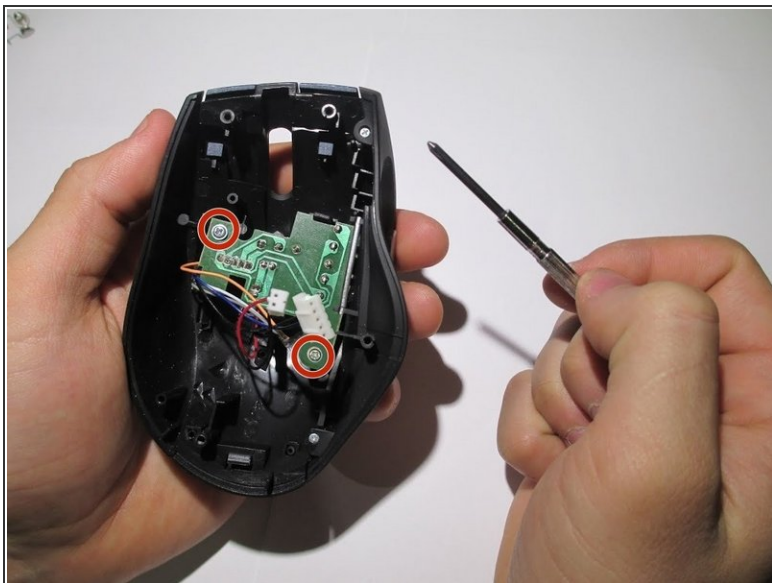
### Step 4



- Remove the wires from the white crimp headers. this will separate the upper and lower housing units of the mouse.

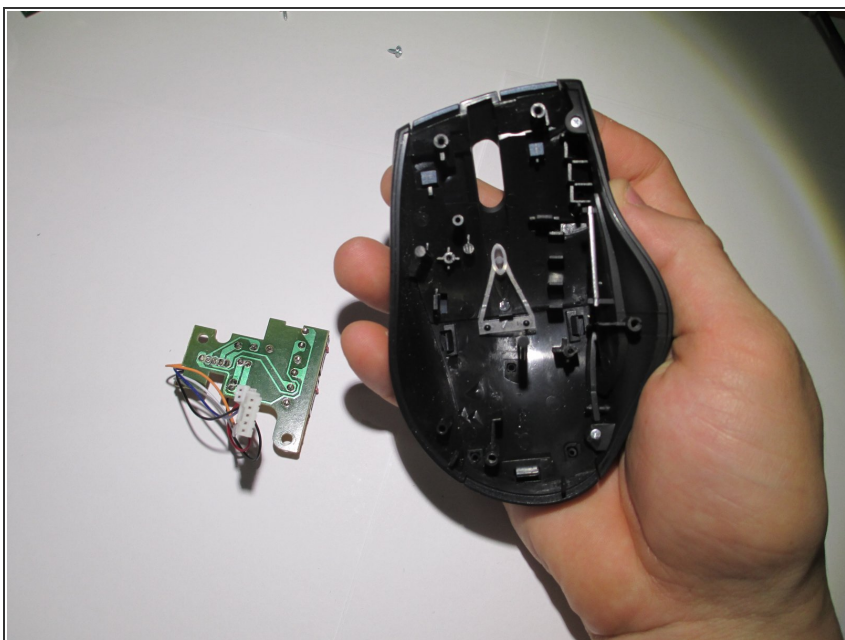
 Pull as far up on the wire as possible, being as careful as possible to avoid ripping the wires.

## Step 5



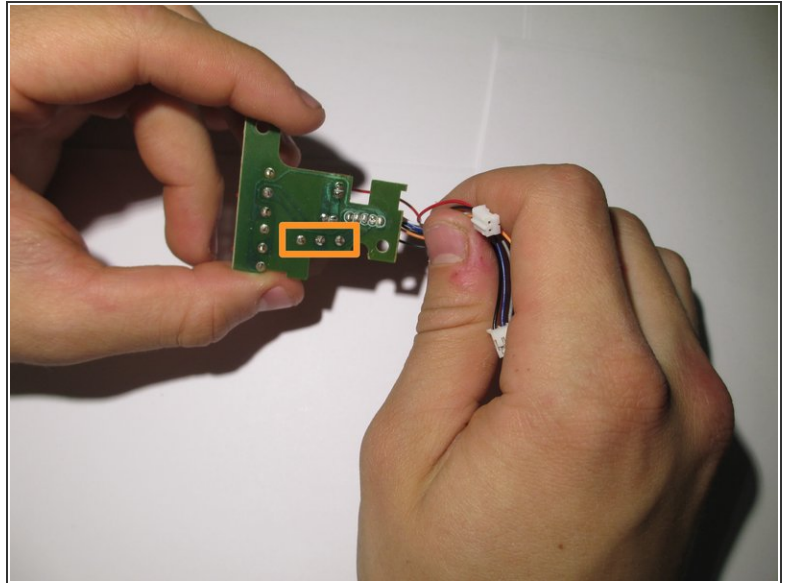
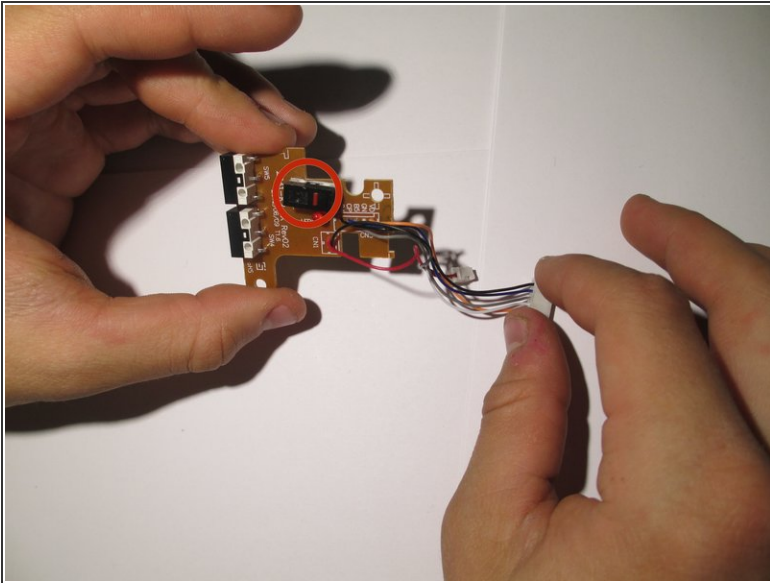
- Take the upper housing of the mouse and begin to remove the two screws (highlighted in red) that hold the board in place.

## Step 6



- Gently remove board.

## Step 7



- The DPI button is the red push button highlighted in red.
- To remove it, flip the board over and desolder the wires highlighted in orange.
- Replace component with new component and resolder back in place.

To reassemble your device, follow these instructions in reverse order.