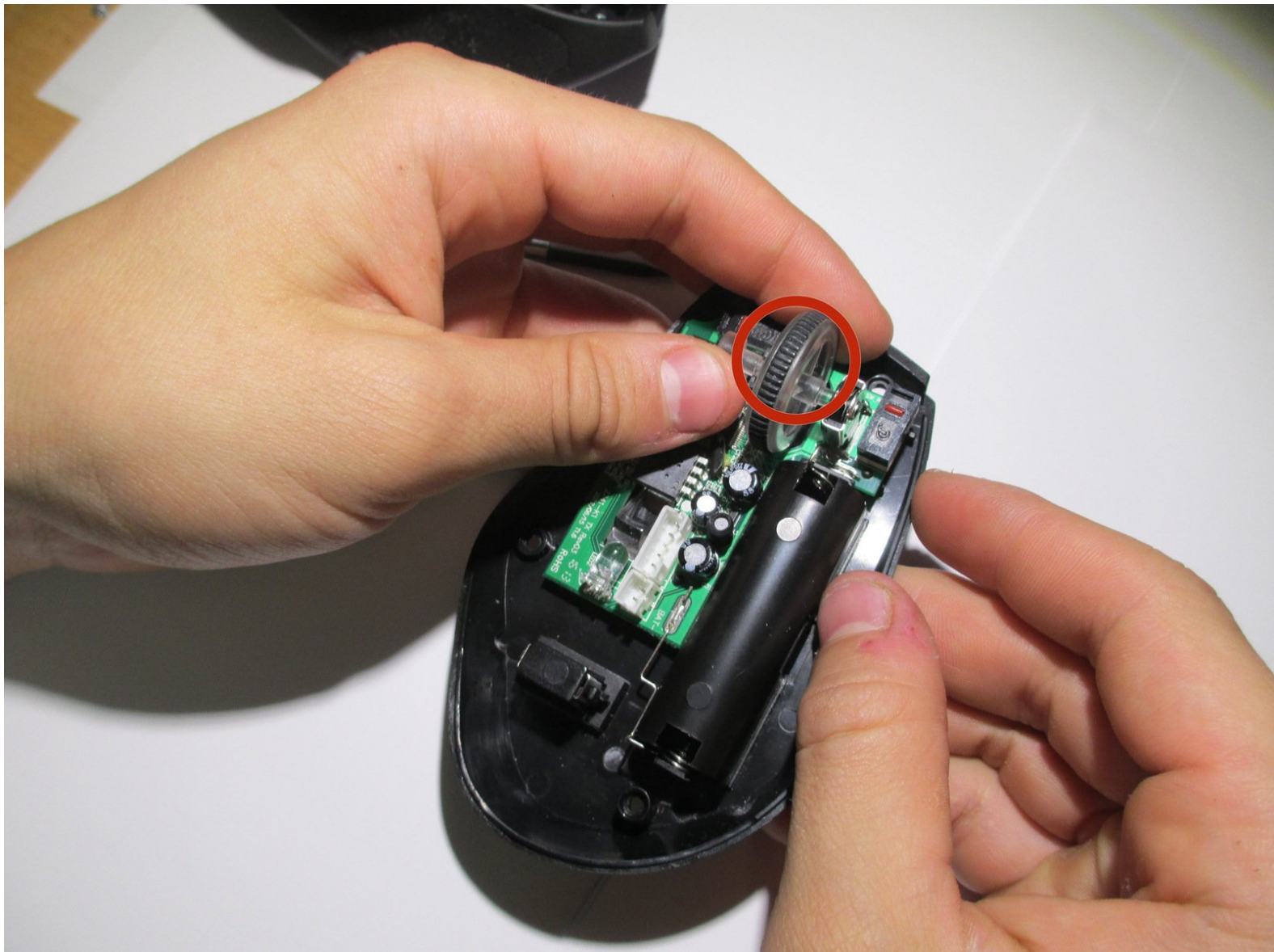




Anker 2.4G Wireless Mouse Scroll Wheel Replacement

This guide covers the replacement of the scroll wheel of an Anker 2.4 G Wireless Mouse.

Written By: Vincent Lee



INTRODUCTION

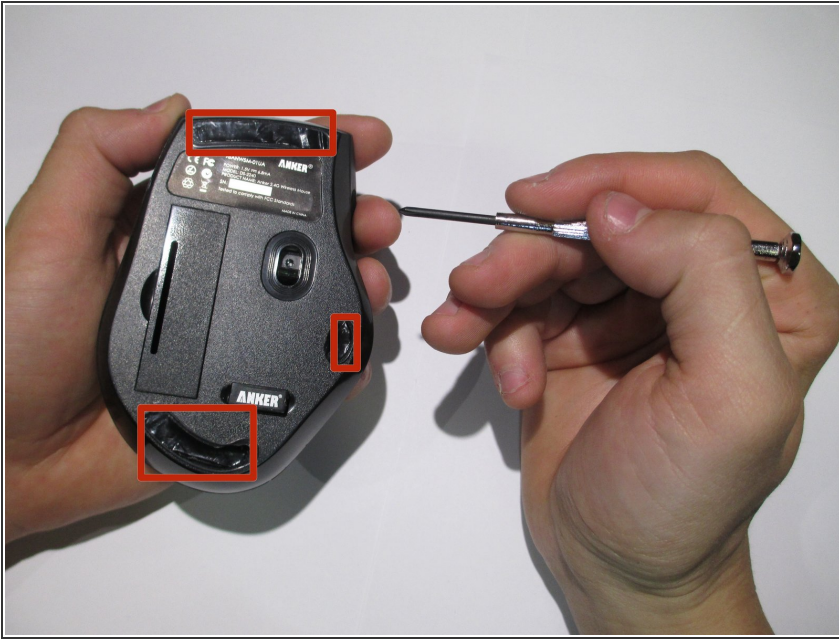
This guide will show you how to disassemble your Anker 2.4 G Wireless Mouse to repair the scroll wheel with little to no experience required.



TOOLS:

- [Phillips #0 Screwdriver](#) (1)
 - [Soldering Iron](#) (1)
 - [Desoldering Braid](#) (1)
 - [Q-Tips](#) (1)
-

Step 1 — Scroll Wheel



- Use the Phillips #0 screwdriver to remove the stickers that hide the screws you will need to access.

Step 2



- Remove the 4 screws to continue.

Step 3



- Pry the center of the mouse apart to separate the upper and lower housing of the boards.

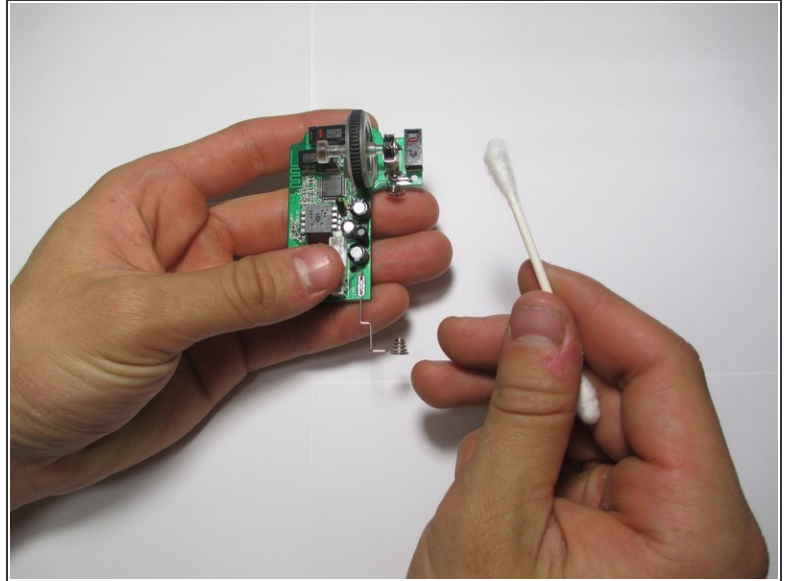
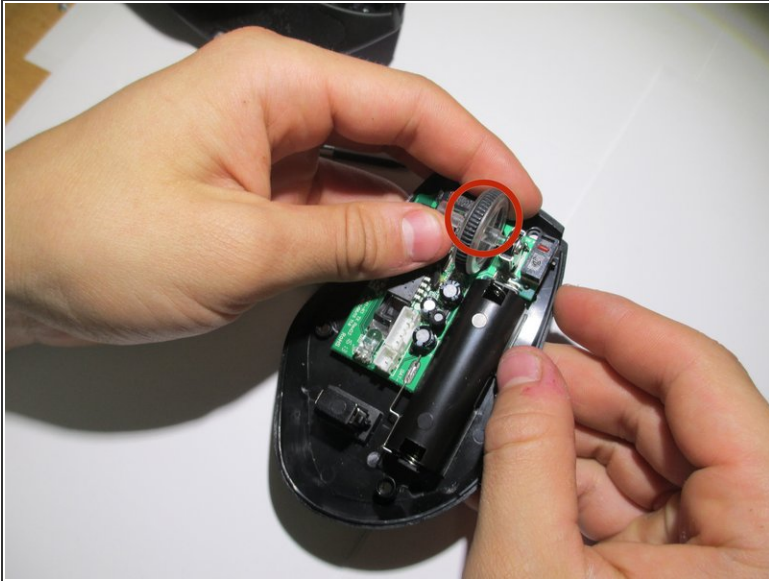
Step 4



- Remove the wires from the white crimp headers, separating the upper and lower housing units of the mouse.

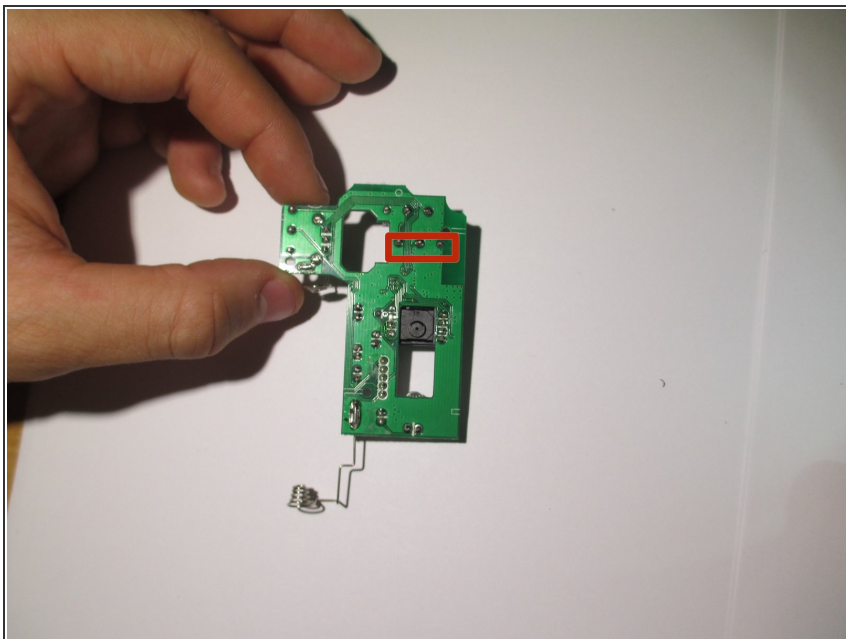
⚠ Don't pull the wires too hard, as they might break.

Step 5



- Pull the scroll wheel to the left to remove it.
- ⓘ This may take some force to remove. Pull the scroll wheel out parallel to the board rather than perpendicular to it.
- Replace/clean if needed.
- If your mouse still does not work after this step, then continue to the next instruction.

Step 6



- Desolder the three pins, then solder in the replacement part.

To reassemble your device, follow these instructions in reverse order.