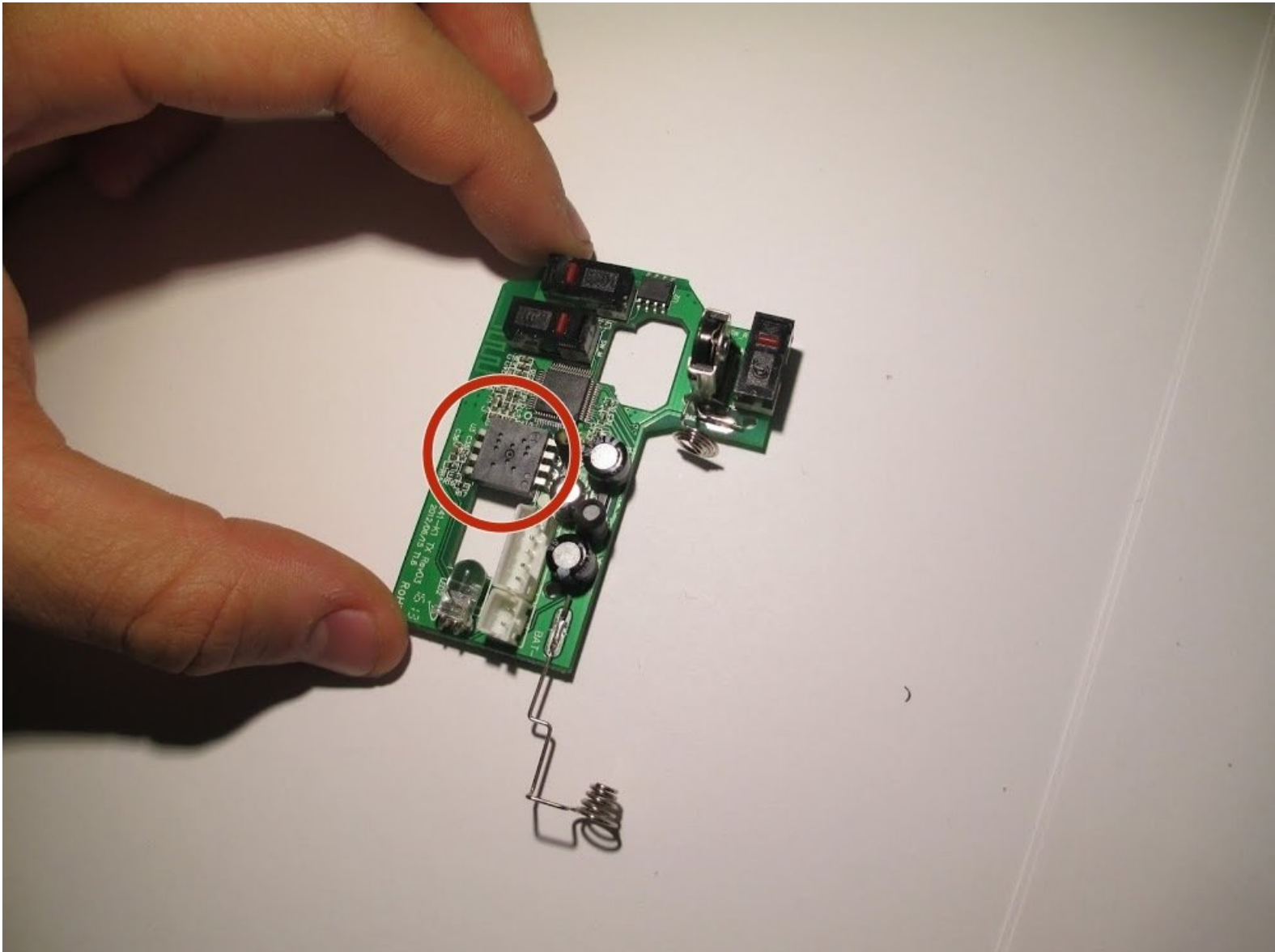




# Anker 2.4G Wireless Mouse Sensor Replacement

How to replace an Anker 2.4G Wireless Mouse sensor.

Written By: Ryan





## TOOLS:

- [Phillips #0 Screwdriver](#) (1)
- [Soldering Iron](#) (1)
- [Desoldering Braid](#) (1)



## PARTS:

- [IC chip](#) (1)

## Step 1 — Sensor



- Use a pry tool to carefully pry off the stickers to reveal the location of 4 screws.

## Step 2



- Using your Phillips screwdriver, unscrew the 4 screws.

## Step 3



- Use an opening tool to carefully pry apart the upper and lower housing of the mouse.

⚠ Make sure you are not using too much pressure, as you could warp the plastic.

## Step 4

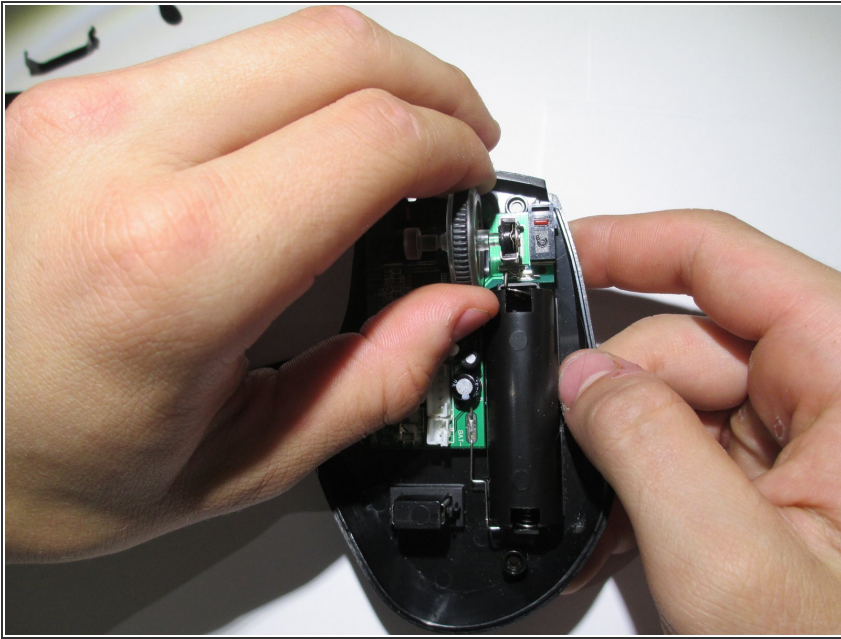


- Disconnect the wires from the white crimping headers.


⚠ Pull as far up on the wire as possible, but be careful to avoid ripping the wires.



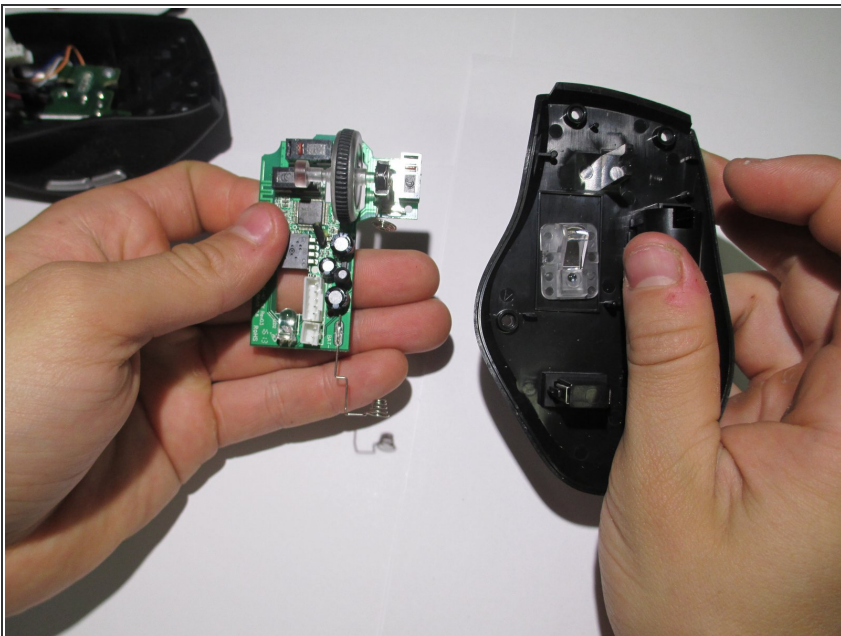
## Step 5




- Remove the scroll wheel from the motherboard by pulling it to the left.

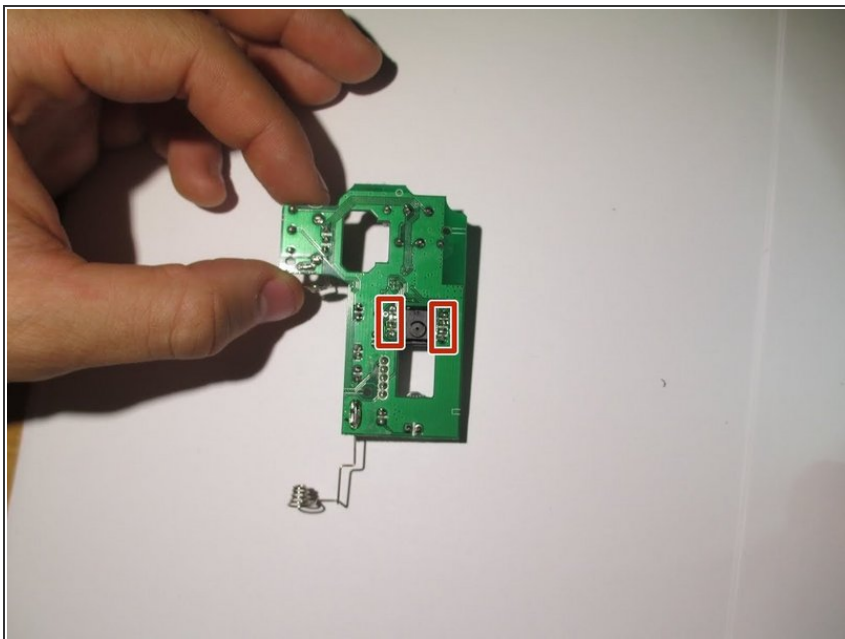
 This may take some force to remove. Make sure to pull it parallel to the board, instead of perpendicularly.

## Step 6



- Lift the motherboard gently away from the plastic housing.
-  Use an [iFixit grounding strap](#) or another antistatic measure to prevent sensitive components from electrostatic discharge during this step.

## Step 7



- Desolder the 6 wires holding the I.C. in place to complete the sensor change.
- Replace the broken sensor with the new sensor and solder back in place.
- ⓘ Make sure none of your solder connections are bridged as this can cause serious damage to your mouse.

To reassemble your device, follow these instructions in reverse order.