



Anki Vector Battery Replacement

This guide will show users how to remove and replace the Anki Vector's vital source of energy: his battery.

Written By: Shay Takei



INTRODUCTION

This guide details how to fully remove the battery of the Anki Vector. Due to its location, this procedure requires many steps accessing the battery.

Remember to only embark on this guide if you have followed the [Anki Troubleshooting Page](#) and the device is still broken.

You should be using this guide if vector fails to charge, power on, or has an extremely short battery life.

While disassembling Vector, make sure to look out for disconnected cables and other broken parts, as often times these can be fixed without entirely replacing the battery.

TOOLS:

- [Jimmy](#) (1)
 - [Spudger](#) (1)
 - [Phillips #0 Screwdriver](#) (1)
 - [Soldering Iron](#) (1)
 - [Phillips #00 Screwdriver](#) (1)
 - [Large Needle Nose Pliers](#) (1)
 - [4mm Nut Driver](#) (1)
 - [iFixit Opening Tools](#) (1)
-

Step 1 — LCD Facial Display



- Using the iFixit opening tool, insert the corner under Vector's golden side panel and lightly twist.
 - Repeat this step on the other side.
- i** The panel should pop off without much force.

Step 2



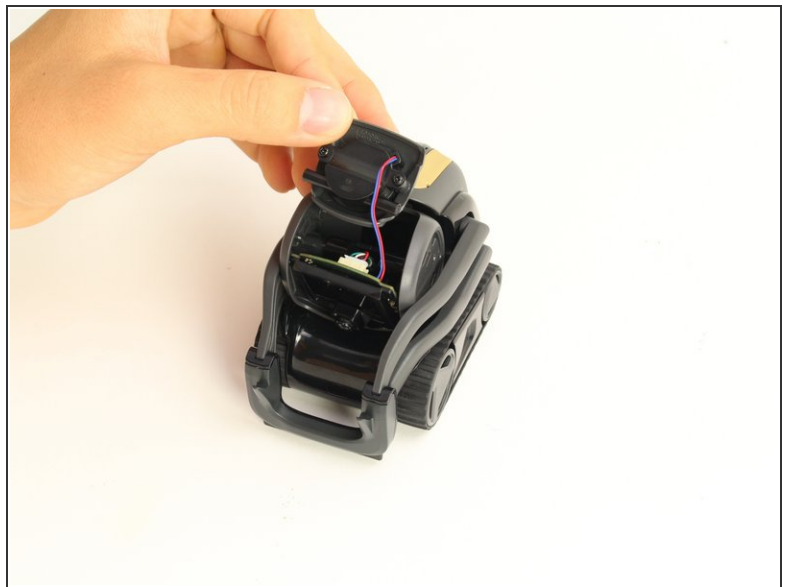
- Insert the corner of the square end of the spudger under the side plate above the partially visible screw.
- Lightly turn the spudger to separate the plate from Vector's head.
- Work the spudger around the plate until it comes off.
- Repeat this step on the the other side.

Step 3



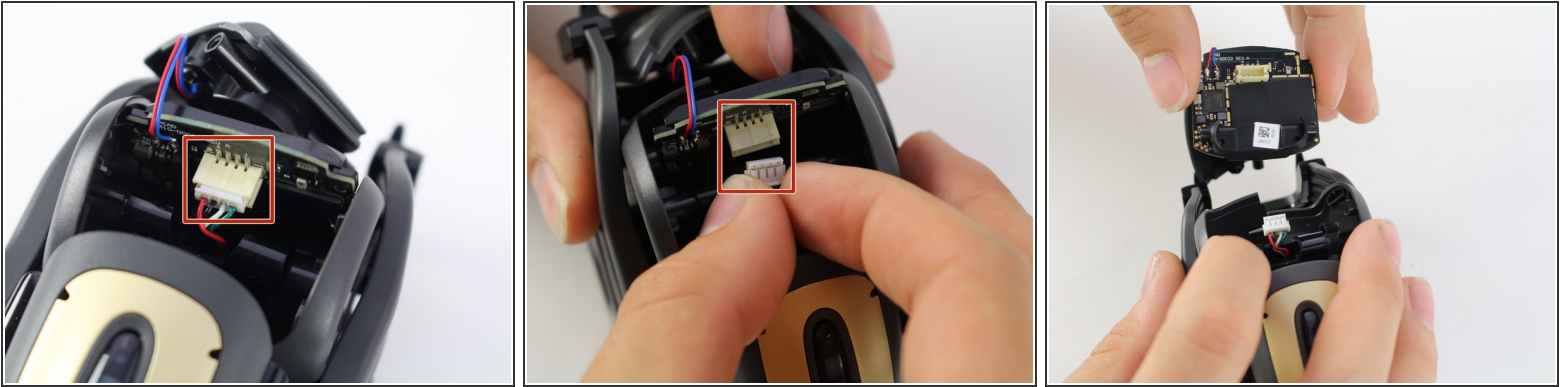
- Using a Phillips #0 screwdriver, unscrew the two 2 mm screws on the side of Vector's head.
- Repeat this step on the opposite side.

Step 4



- Pull apart Vector's head. It should separate down the middle.
- Remove the screen protector by gently pulling it free from the two face halves.

Step 5



- Using your thumb and index finger, unplug the display from the plug in Vector's neck.
- Pull the LCD and speaker assembly from Vector's head.

⚠ There is a very thin insulating rubber sheet located at the base of the screen. Be careful not to tear it when removing the display.


Step 6 — Battery



- Gently pull out the two halves of Vector's head from between his arms.

Step 7



- Remove the Anki Vector's belts on both sides of its body by gently sliding them off.
-  You should be able to pull them off without much effort.

Step 8



- Pull off the covers attached to Vector's rear wheels.

Step 9



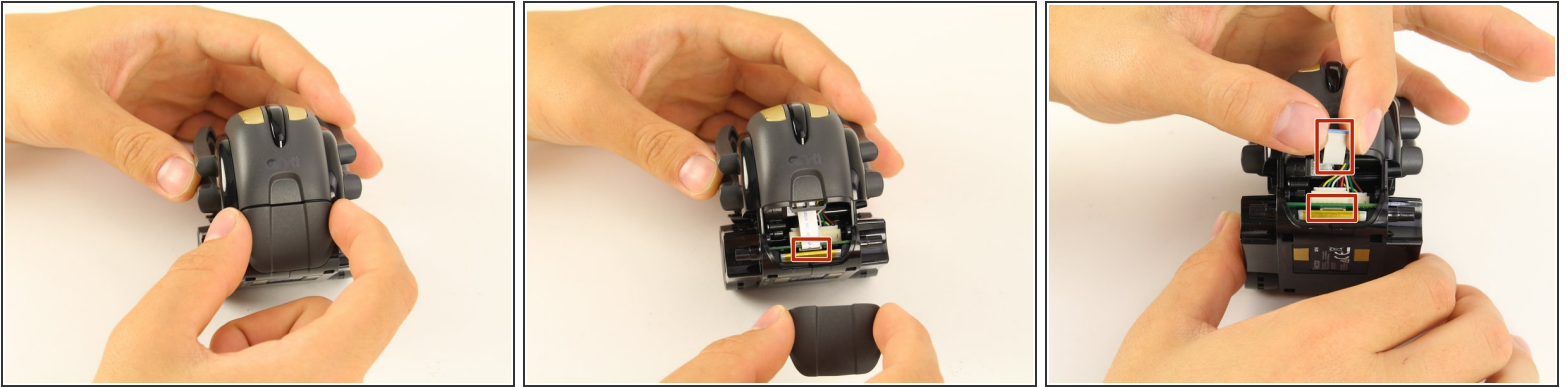
- Unscrew the 2 mm screws located under the wheel covers using a Phillips #0 screwdriver.
- Remove the rear wheel.

Step 10



- Unscrew the two 2 mm body screws using a Phillips #0 screwdriver.

Step 11



- Using two fingers gently pull off the lower rear panel.
- Using your fingers, unplug the ribbon connector.

Step 12



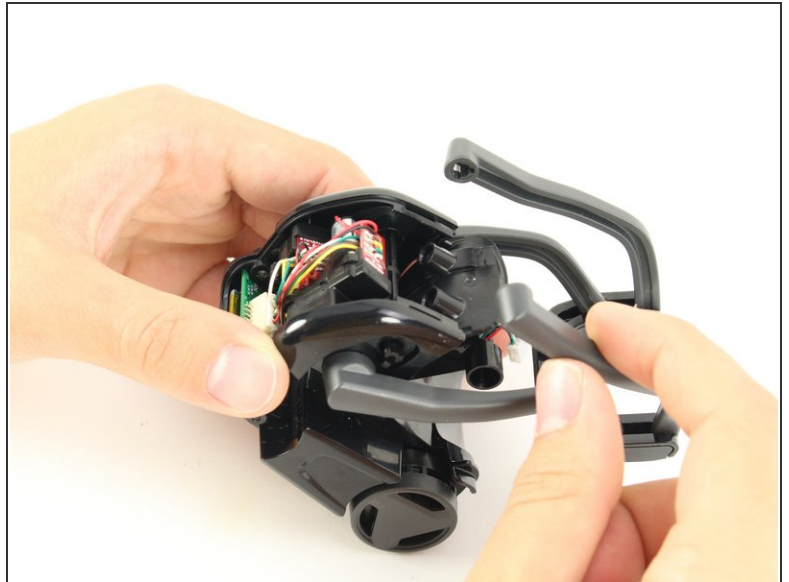
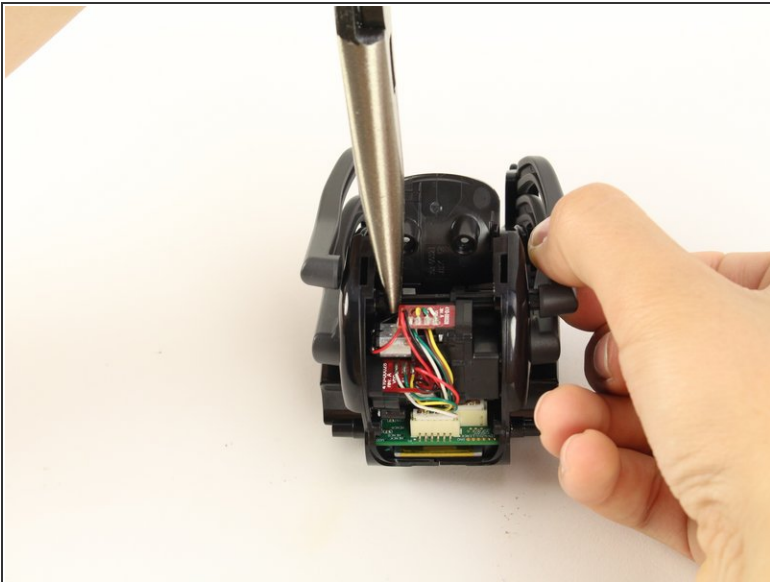
- Unscrew the two screws behind vector's neck.
- Remove the capacitive touch assembly.

Step 13



- With a moderate amount of force pull one of vector's top arms away from his body until it disconnects from the shaft.

Step 14



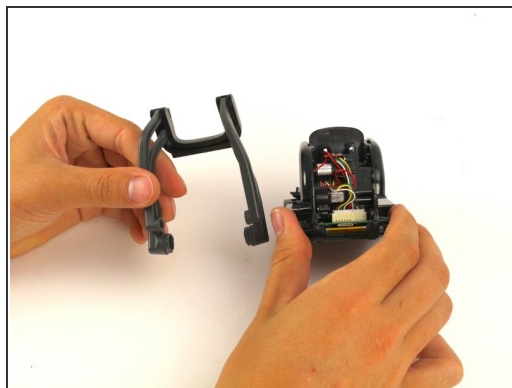
- Gripping the shaft with needle nosed pliers, pull the opposite top arm off the main shaft.

Step 15



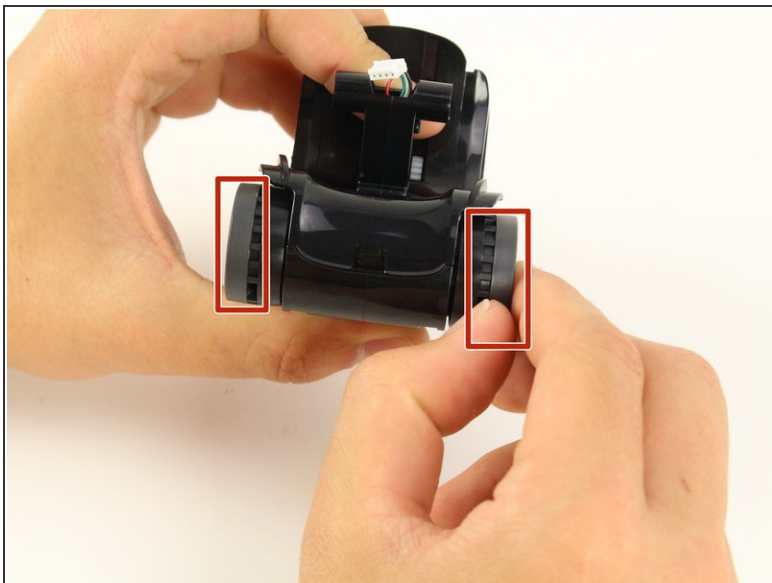
- Pinch one end of the arm shaft and push it into the body.
- Grab the other end and pull the shaft out of the body.

Step 16



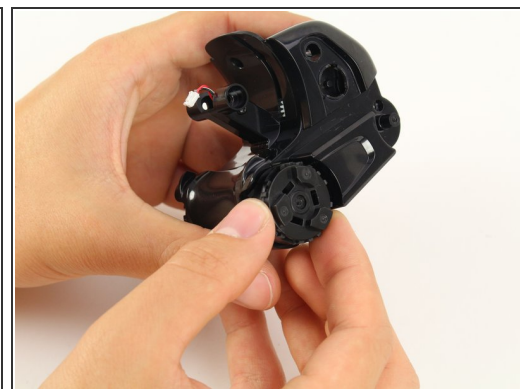
- Raise vectors arms all the way up and gently pull each arm out of its socket.

Step 17



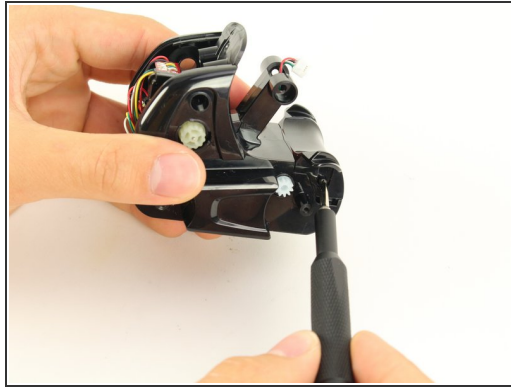
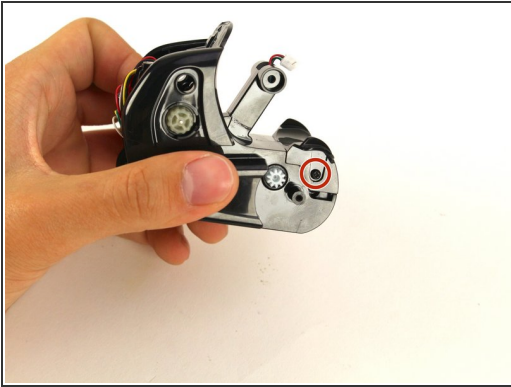
- Pull the wheel covers off of Vectors forward wheels.

Step 18



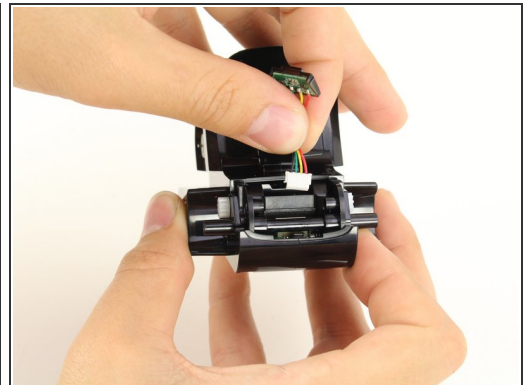
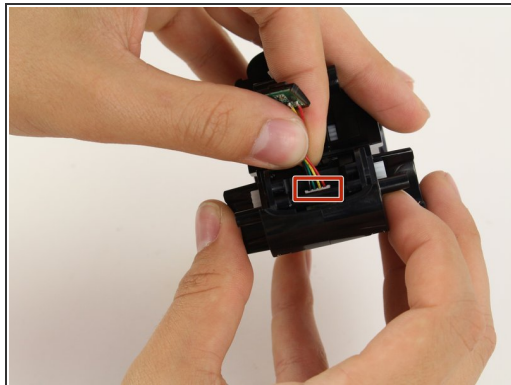
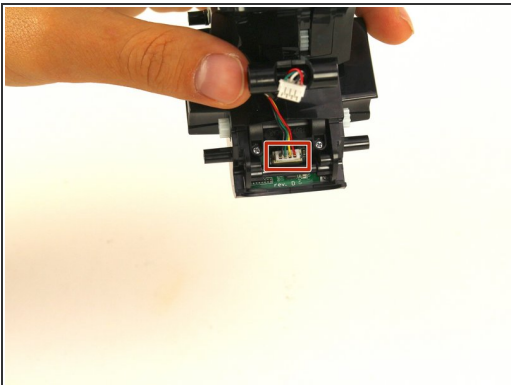
- Using the same Phillips #0 screwdriver, unscrew the 2 mm screw under the wheel cover.
- Gently pull the wheel off.

Step 19



- Unscrew the two body screws located behind the front wheels.
 - Gently pull the cover from Vector's body
- ⚠ Be careful when removing the cover. The infrared sensor connects the cover to the body by wires.

Step 20



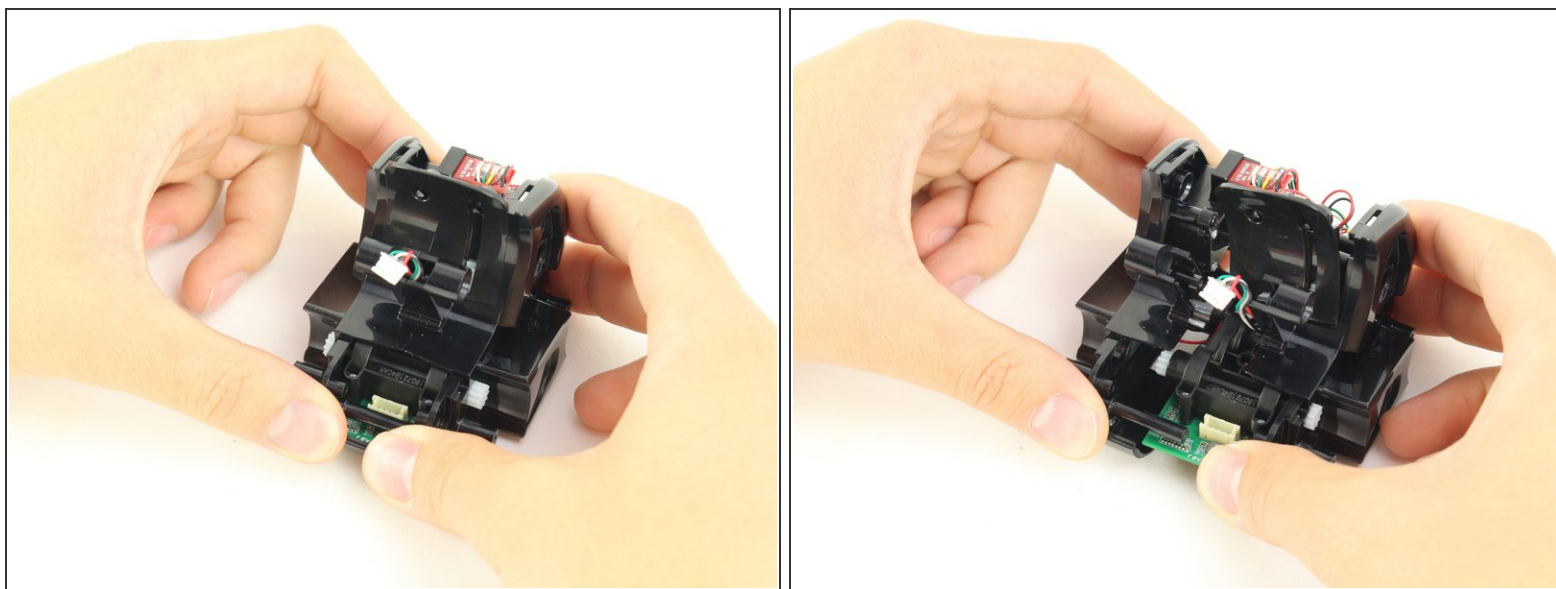
- Gently unplug and remove the infrared sensor.

Step 21



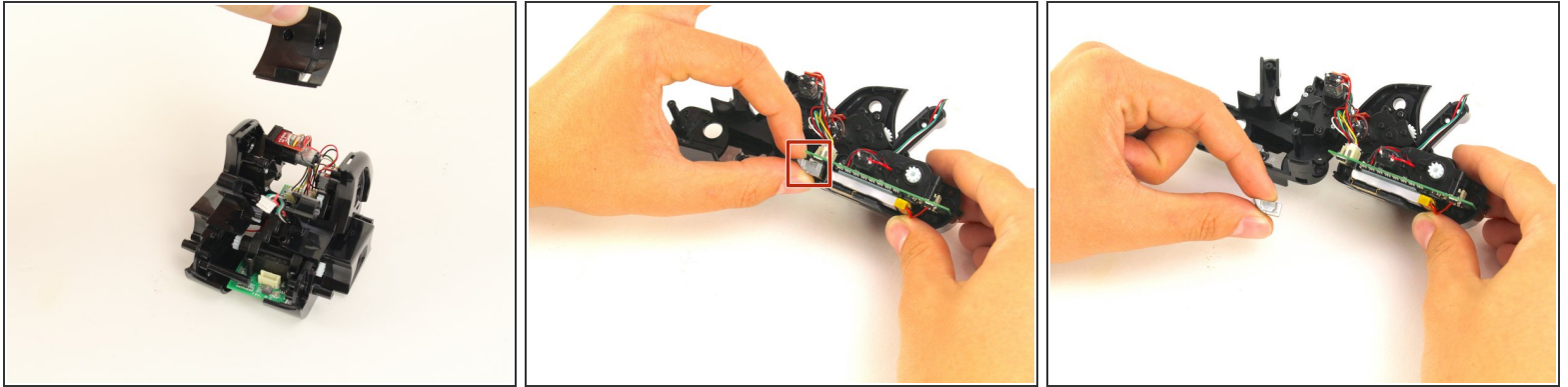
- Insert your Phillips #0 bit into a 4 mm nut driver and insert both into your bit driver.
- Unscrew the three body screws.

Step 22



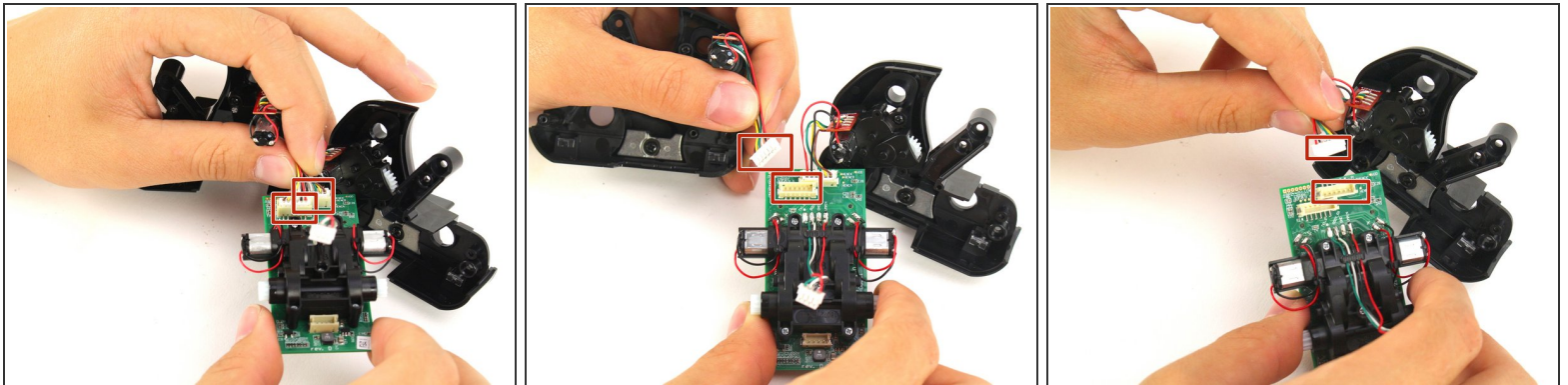
- Gradually increasing applied force, pull the body apart.

Step 23



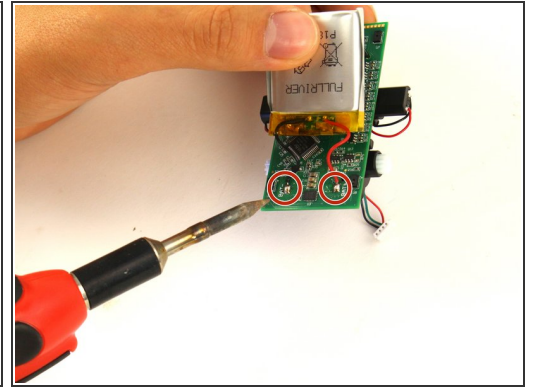
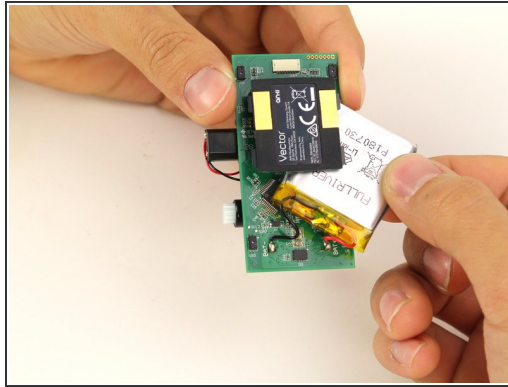
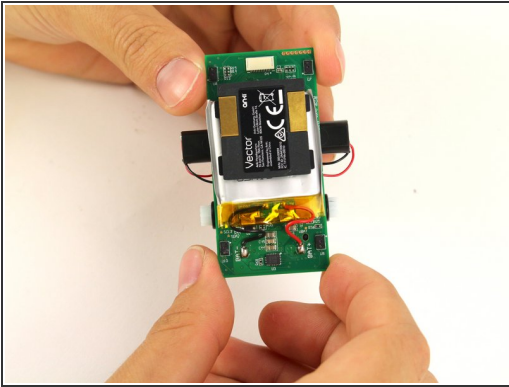
- Remove the shoulder panel.
- Remove the weight.

Step 24



- Unplug the two motor connectors from the motherboard.

Step 25



- Wriggle the battery free from the motherboard.
- Using a soldering iron, desolder the connections from the battery to the motherboard.

To reassemble your device, follow these instructions in reverse order.