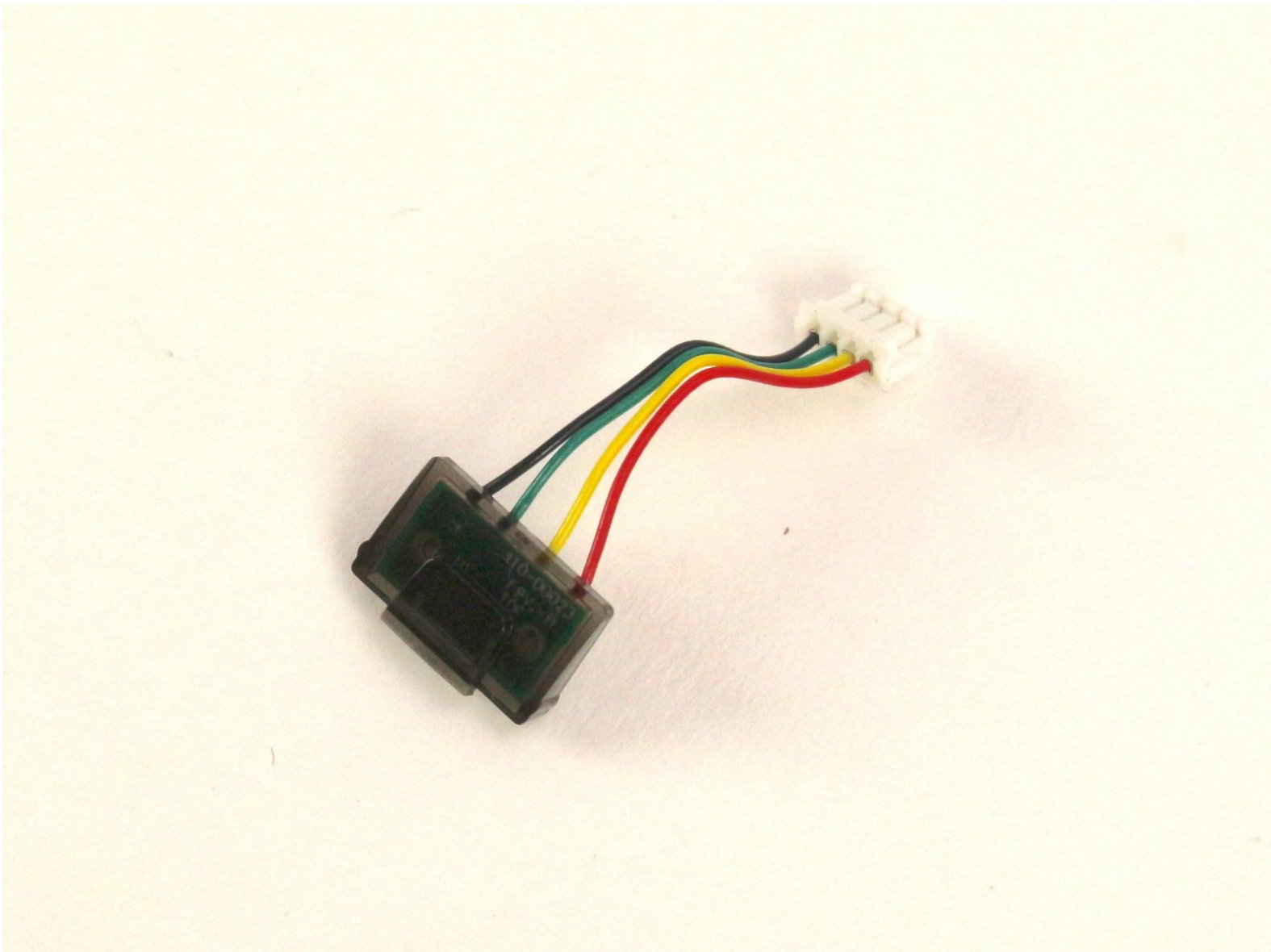




# Anki Vector Infrared Sensor Replacement

This guide will show you how to remove the Anki Vector's infrared sensor.

Written By: Shay Takei



---

## INTRODUCTION

This guide will illustrate the process to remove or replace the infrared sensor of the Anki Vector. The only bit of equipment you will need to complete this guide is a screwdriver.

This guide should be helpful if your Anki Vector is having trouble distance tracking or mapping its environment.



### TOOLS:

- [Phillips #00 Screwdriver](#) (1)
-

## Step 1 — Belts



- Raise Vector's arms above his head.

## Step 2



- Using your thumb and index finger, grab the lower portion of the belt near the large wheel and pull the belt off.
- Repeat on the other side.



### Step 3 — Infrared Sensor



- Pull each front wheel cover off.

**i** This will require a good amount of force due to the three clips holding it in place.

### Step 4



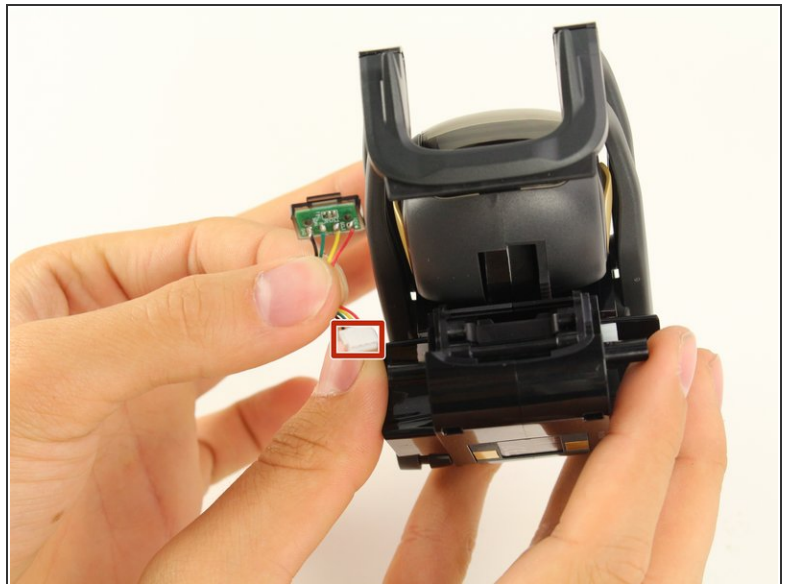
- Unscrew the wheel with the Phillips #00 screwdriver and gently remove it.

## Step 5




- Unscrew the two body screws beneath the wheel using the same screwdriver.

## Step 6



- Gently pull off the front panel to unplug the Infrared sensor.

 Be careful when pulling off the front panel. The Sensor is connected by wires to both the panel and the device.

To reassemble your device, follow these instructions in reverse order.