



Anova Precision Cooker BT WiFi Teardown

Opening up the Anova Precision Cooker Bluetooth + Wifi. This teardown can be used to replace eg. the fuse or diagnose other issues

Written By: Heikki Otsolampi



INTRODUCTION

The Anova Precision cooker is a great product and has a fantastic customer service and returns policy. However, if you're not interested to wait for the shipping of a replacement machine for a blown fuse, here's a quick teardown on how to find it and trouble shoot it.

My issue was something totally different and I wasn't able to locate it. Nevertheless, I was fully replaced by Anova so Kudos to the customer service team. I was eventually asked to destroy the faulty machine so here are the photos and experiences of me destroying my machine.



TOOLS:

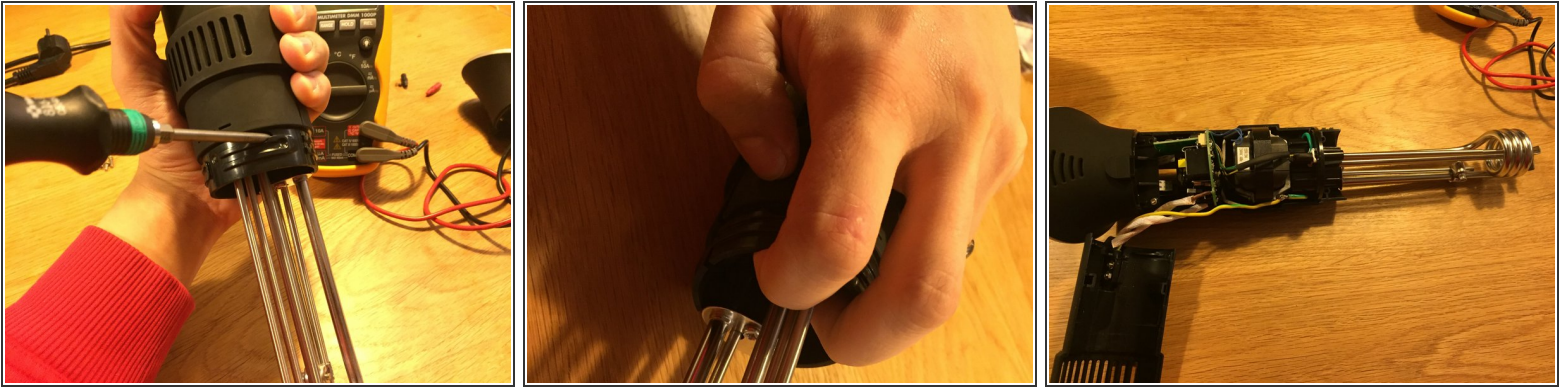
- [Phillips Head Screwdriver: Size PH1](#) (1)
-

Step 1 — Dismantling the user serviceable parts



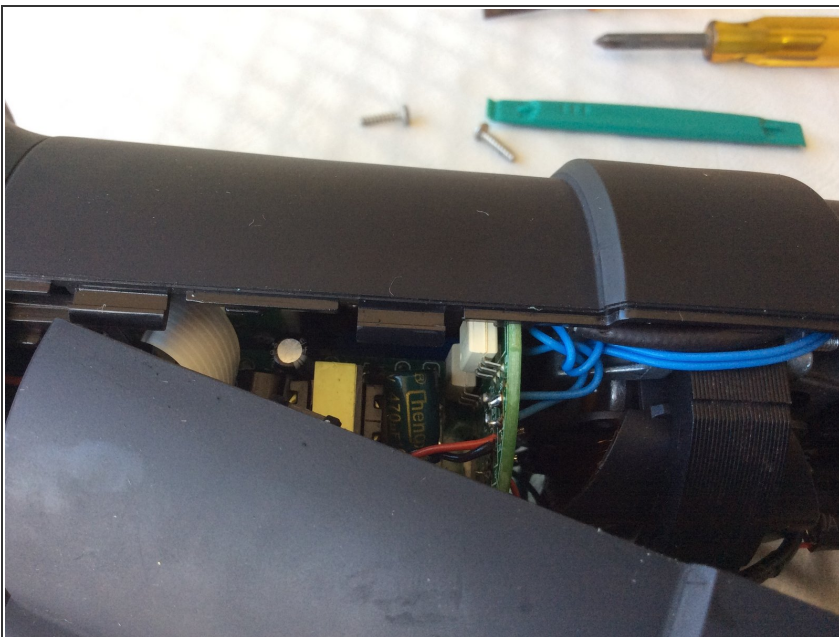
- Grab hold of the upper part of the cooker and the stainless steel skirt
- Rotate the skirt until it loosens from the slots and pull it off
- You'll be left with the heating element, the thermometers and the mixing arm visible

Step 2 — Remove the plastic casing



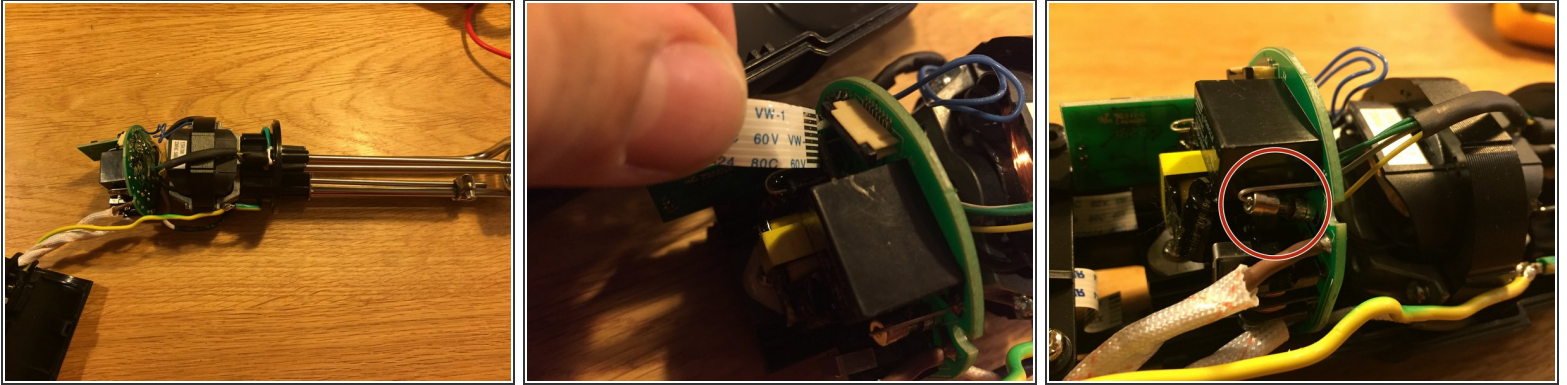
- Locate the two screws that hold the case together. Unscrew them (philips 1)
- Using relatively much force, insert two fingers beneath the casing and pull it off from the counter part. It is held in place by few plastic clips that will yield with force without breaking (in my case, where I was destroying it)
- The clips are located relatively close to the upper edge of the casing, if you are interested in shimmying them with a palette knife etc.
- You are left with the top most cover off, the power cord holding it still in place

Step 3 — Locking tab location



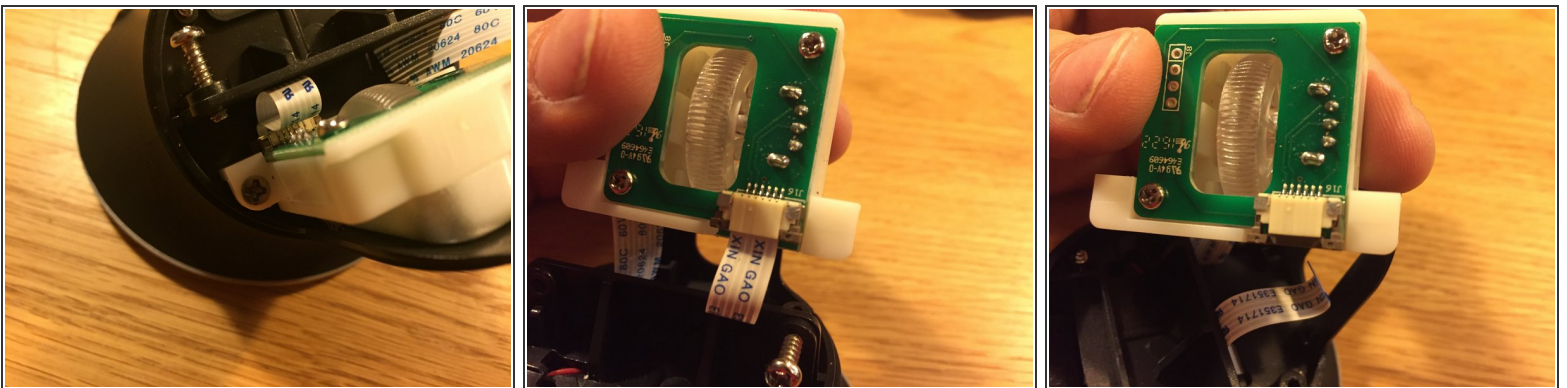
- The plastic locking tabs can be popped open using a 'spud' tool inserted at the fat part of the housing and then slid toward the top of the unit. You can see the tab at the very left of the screen. Green 'spud' tool in the background

Step 4 — Remove the control unit



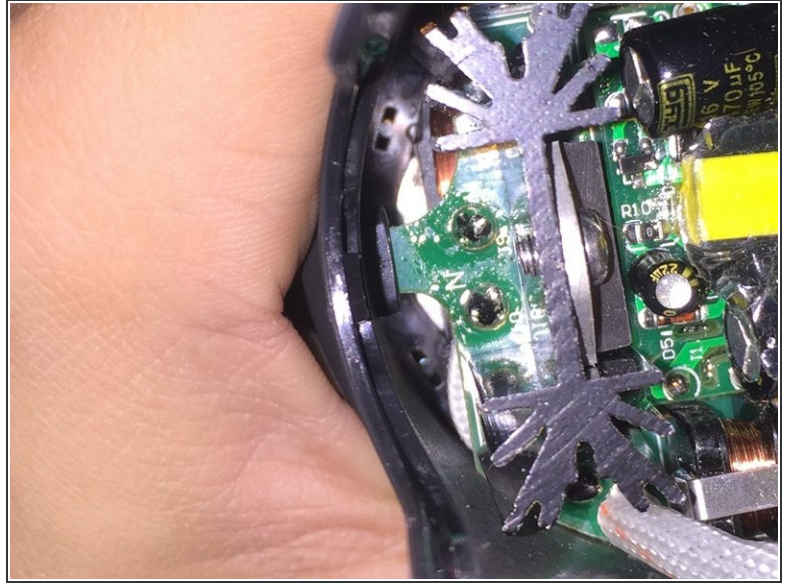
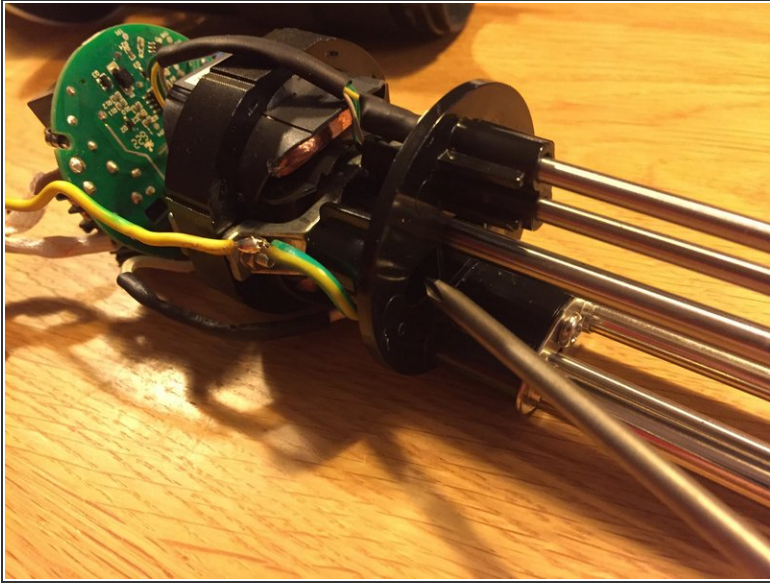
- Remove the control unit by unscrewing the two screws that hold it in place
- You may then remove the bottom casing as well if interested
- Notice to remove the control cable before violently showing the control unit aside
- The fuse is clearly visible next to the power cord. To change it, you need to unsolder it and solder a new one in place

Step 5 — Additinoal dismantling



- The temperature control adjuster can be removed by the two flushed screws
- To remove the control cable, lift the small plastic shimmer an then pull out the cable

Step 6 — Additional dismantling and reassembly



- The two screws in the bottom of the unit secure the motor in place. removing them loosens the motor. Also remove the propeller from the axel and you can list the engine off
- When reassembling, note the notch in the circuit board needs to go to the dedicated hole in the casing.