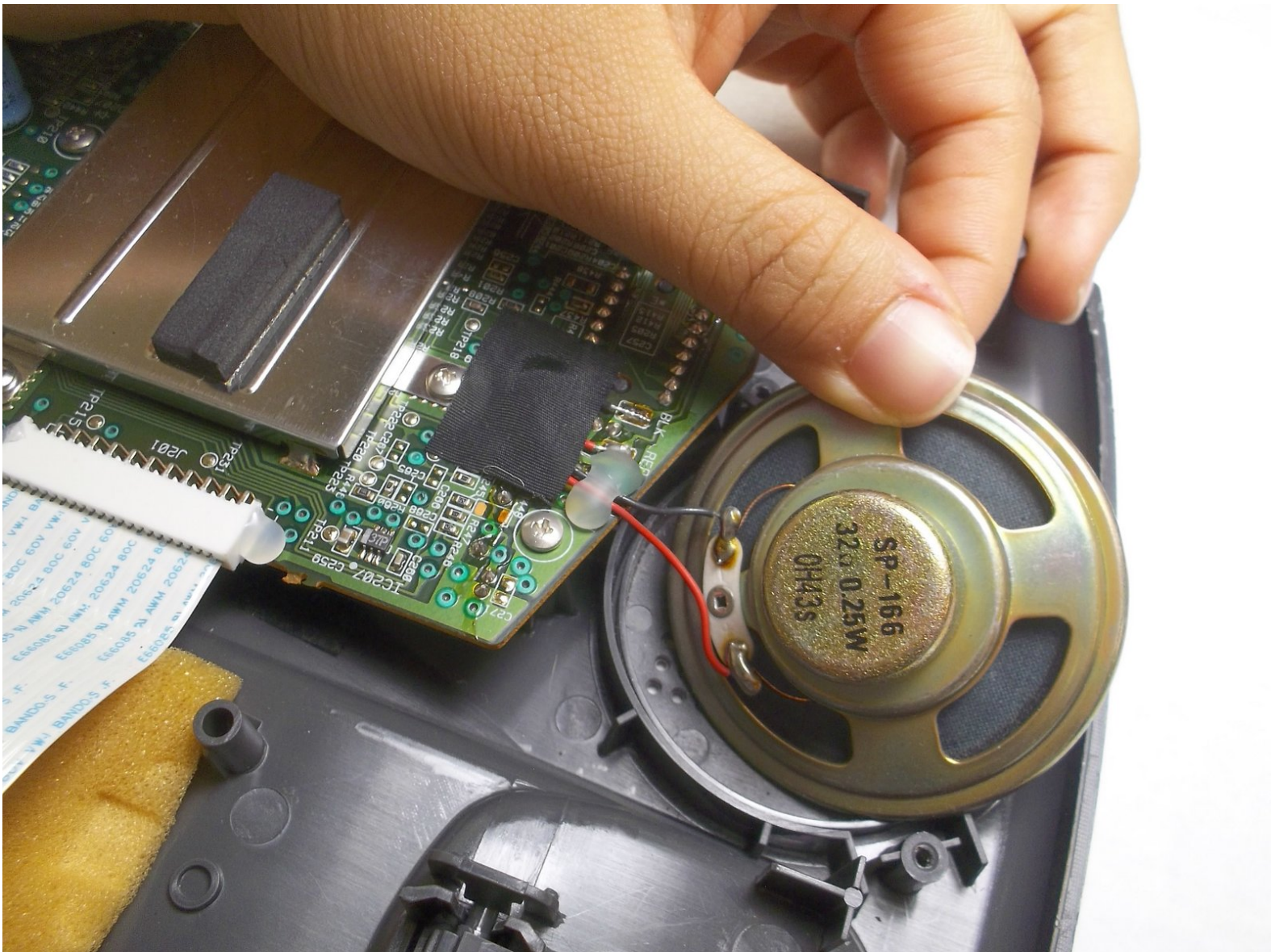




# Answering Machine Speaker Replacement

This is a step-by-step guide on how to replace the speaker on the base, or the answering machine.

Written By: Troy Chester



# INTRODUCTION

Is the speaker on your answering machine not working well? This is the guide for you!



## TOOLS:

- [Spudger](#) (1)
  - [Phillips #0 Screwdriver](#) (1)
  - [Soldering Workstation](#) (1)
  - [Soldering Iron](#) (1)
-

## Step 1 — Base



- Turn the base over. You will see four 11mm Phillips #0 screws, one in each corner.
- Use a screwdriver to remove all four 11mm Phillips #0 screws.

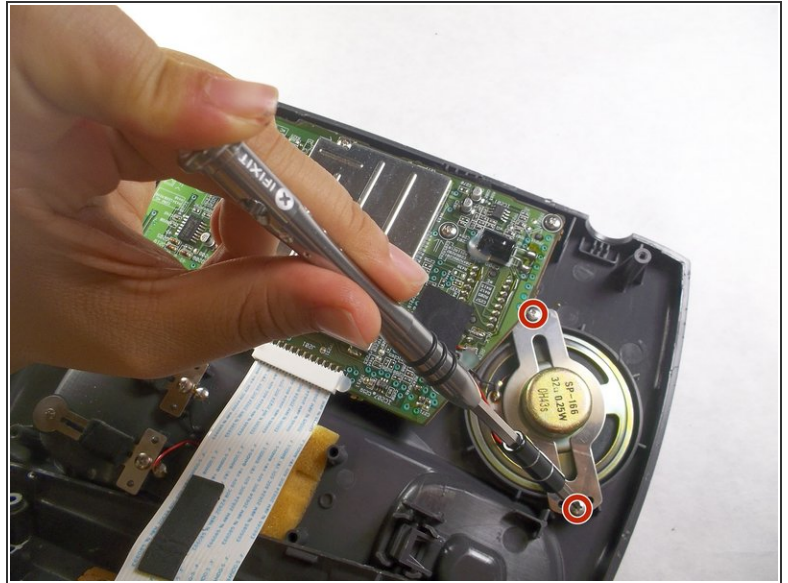


## Step 2



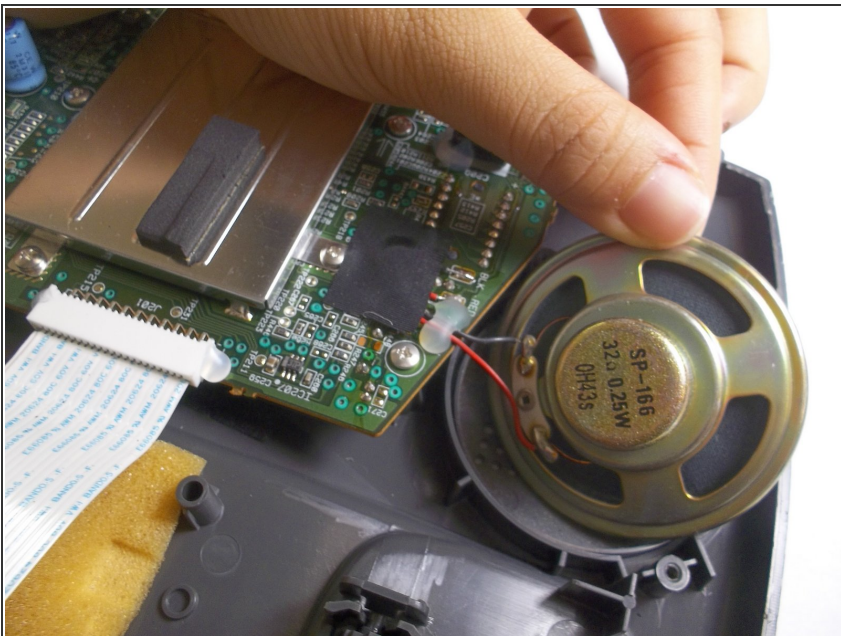
- Locate an easy seam for entry and insert the metal spudger to separate the plastic. Use the spudger in multiple places if necessary.
- ⚠ Opening the base may require exerting significant force as it is bound together tightly. This step can be dangerous.
- ℹ The spudger is designed to make this step easier.

### Step 3 — Answering Machine Speaker



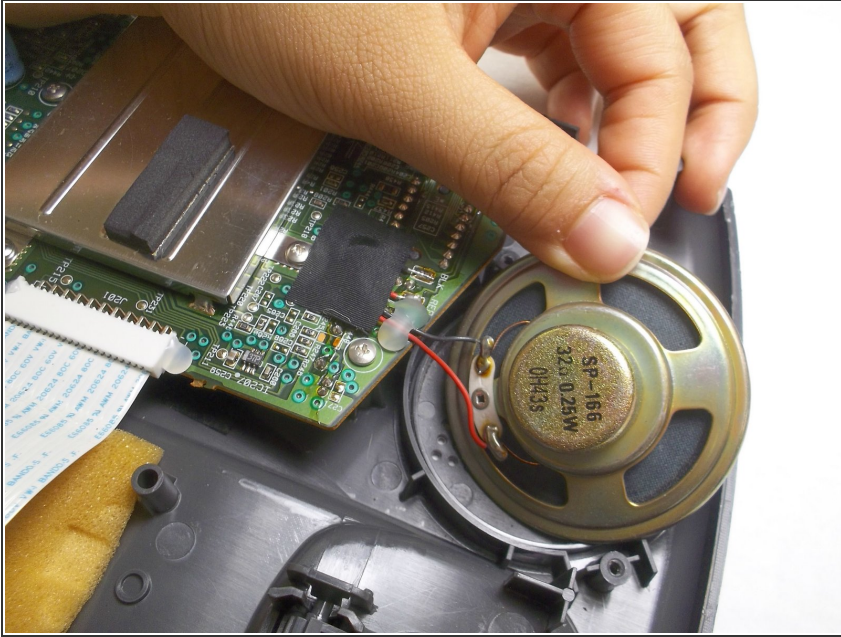
- Locate the speaker at the top left of the base as pictured. It is the silver, conical component. Two 7mm Phillips #0 screws hold the speaker in place.
- Use a screwdriver to remove the two 7mm Phillips #0 screws.

### Step 4



- Finish speaker removal by cutting both the black and red wires.

## Step 5



- Solder your replacement speaker into the circuit. For assistance with soldering check out the [iFixit Solder and Desolder Guide](#).

To reassemble your device, follow these instructions in reverse order.