



# Aorus X7 v2 mSATA SSDs Replacement

Open laptop and identify where the mSATA ports are for replacing or upgrading the SSDs.

Written By: Eric Holmes



---

## INTRODUCTION

Open laptop and identify where the mSATA ports are for replacing or upgrading the SSDs.

---



### TOOLS:

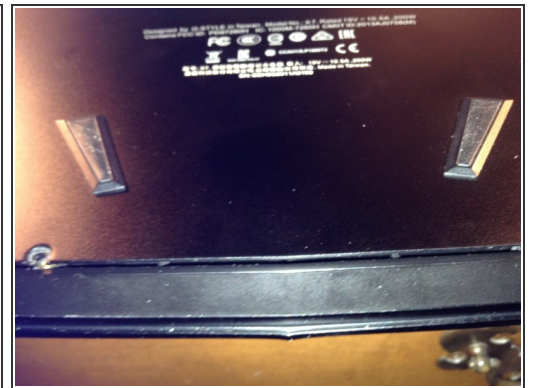
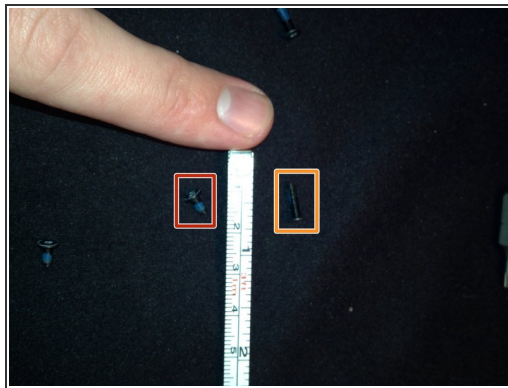
- [T6 Torx Screwdriver](#) (1)
-

## Step 1 — Aorus x7



- We'll be working with the x7v2 configuration 2

## Step 2 — Open the Back Panel



- Take out the 12 T<sup>+</sup> torx screws around the edge. No particular order is required.

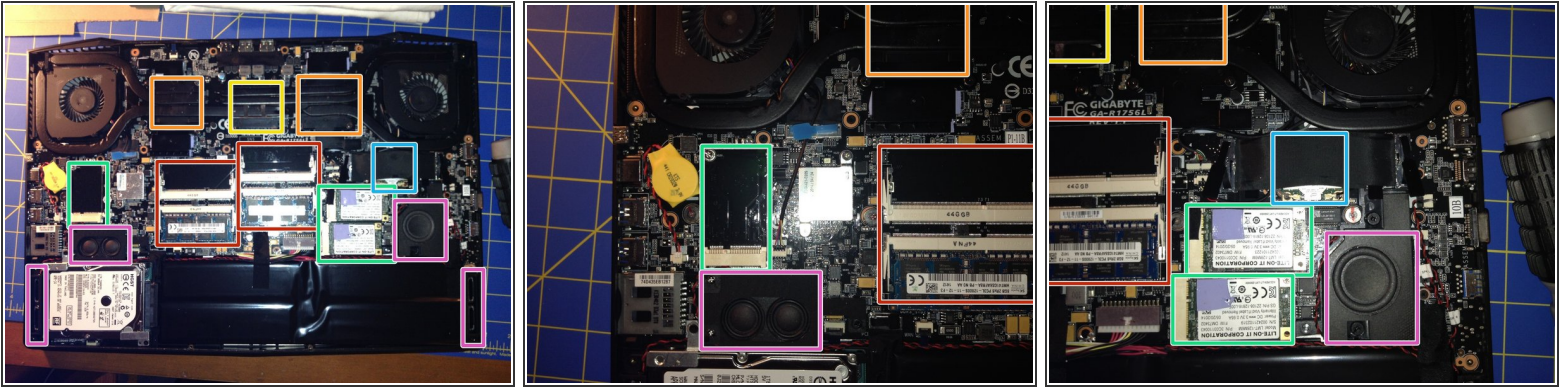
- Short ones
- Longer ones

**i** A small gap will appear after removing the bottom ones, this is acceptable.

**!** The Panel has clips at the rear and slides out to the left.

**i** the front and left side have no clips or extras

## Step 3 — Replacing an mSATA card



- An Overview of Parts
  - 4 Slots DDR3L - up to 32GB
  - 2x 860M NVIDIA GTX Graphics
  - intel i7-4860HQ
  - 3x mSATA half cards for SSD's. Replace or insert the appropriate card.
  - RF module
  - Speaker system of Aorus x7

To reassemble your device, follow these instructions in reverse order.