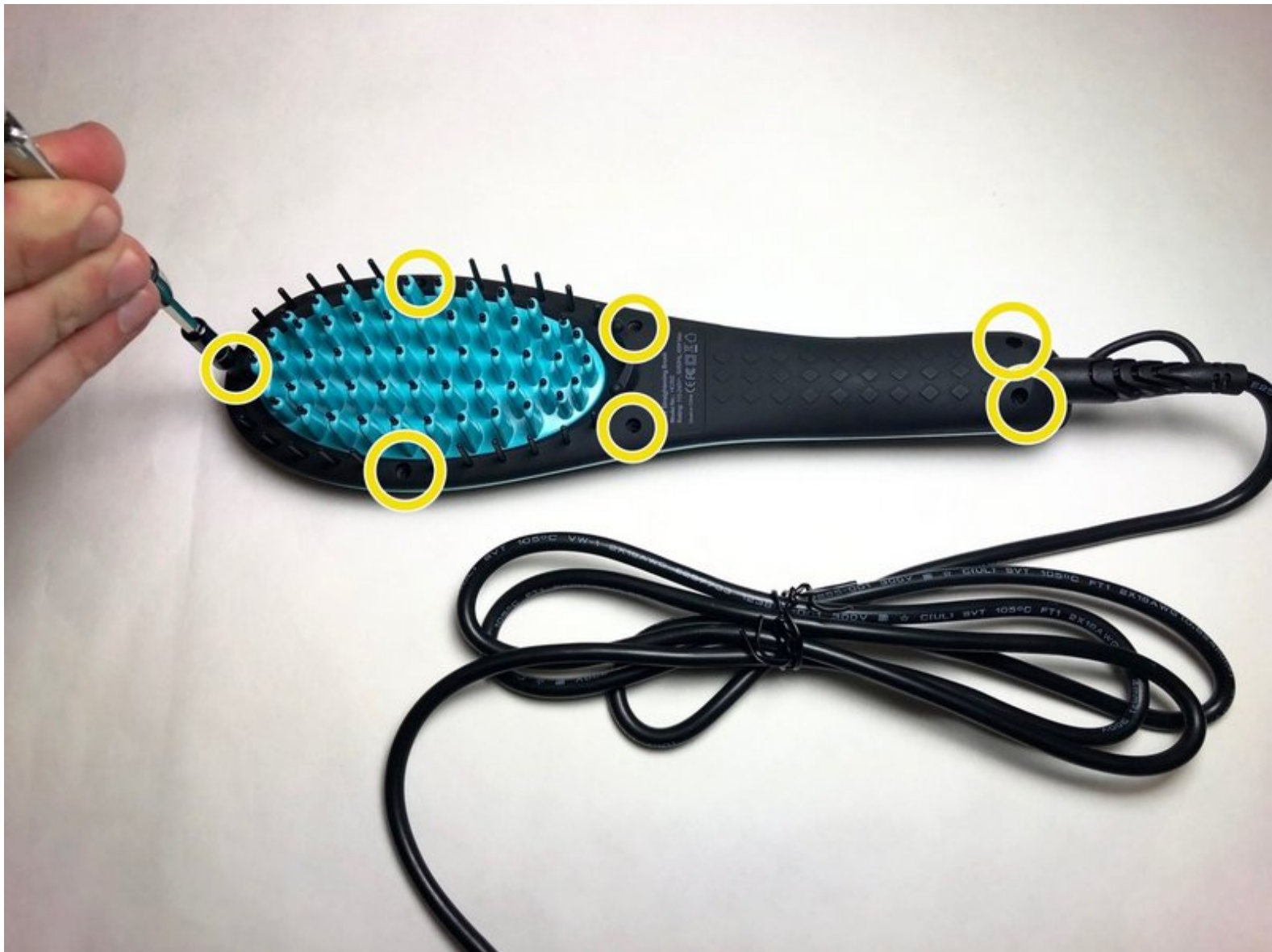




Apalus Digital Hair Straightening Brush Buttons Replacement

This guide will show how to replace the buttons on the side of the Apalus Digital Hair Straightening Brush.

Written By: Aaron Brysch



INTRODUCTION

If you are experiencing dysfunctional buttons on the side of the brush, this guide will walk you through on how to take apart the brush in order to replace these buttons. Soldering is involved, so if you don't know how to solder take a look at this [How To Solder and Desolder Connections](#)



TOOLS:

- [Phillips #1 Screwdriver](#) (1)
- [Soldering Iron](#) (1)
- [Solder](#) (1)



PARTS:

- [Buttons](#) (3)

Step 1 — Buttons on the side of the brush



- Remove the seven 5mm Phillips #1 screws on the comb-side of the brush.

Step 2



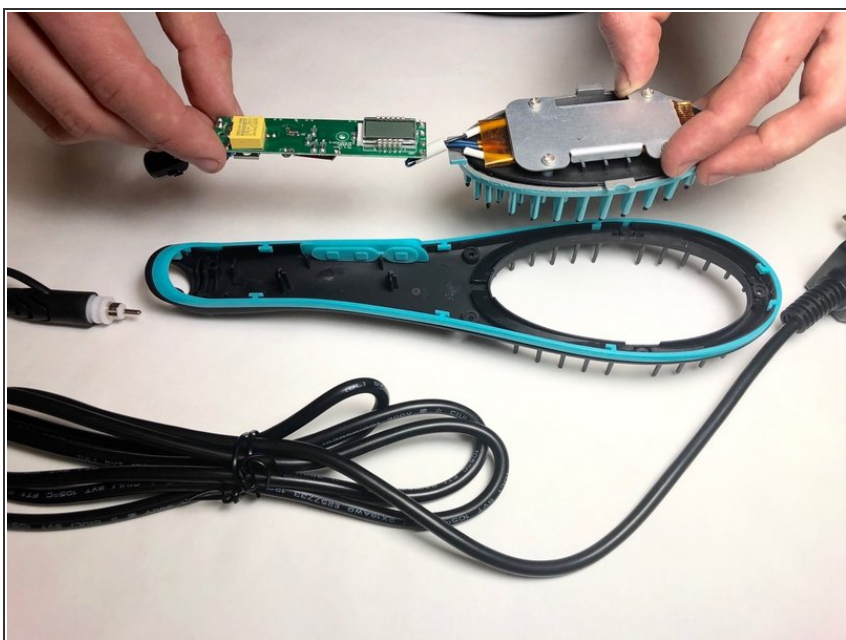
- Now that the screws are taken out, remove the backside of the comb.

Step 3



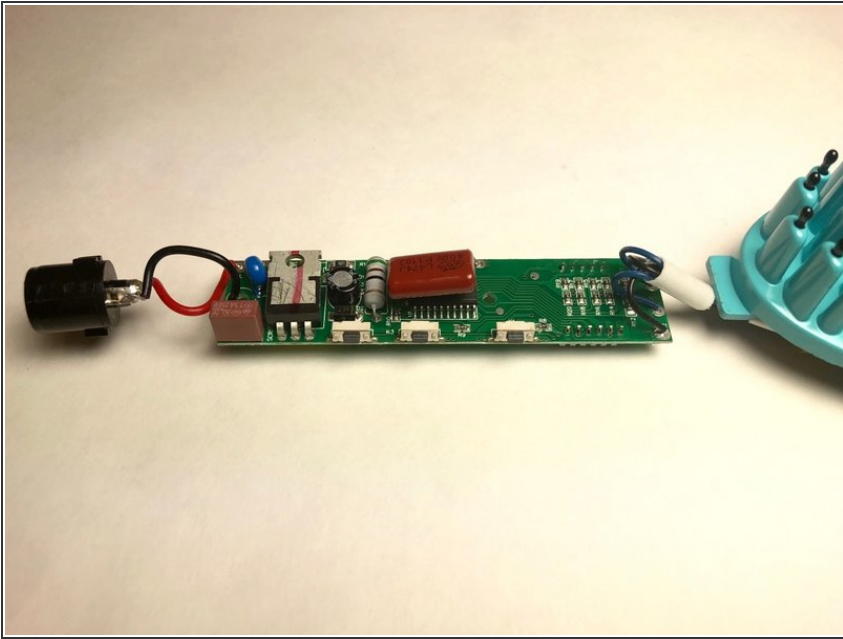
- Unplug the power cord from the insert inside of the brush.
- ⚠ Be careful not to tug on the wires. Hold the insert when removing the power cord.

Step 4



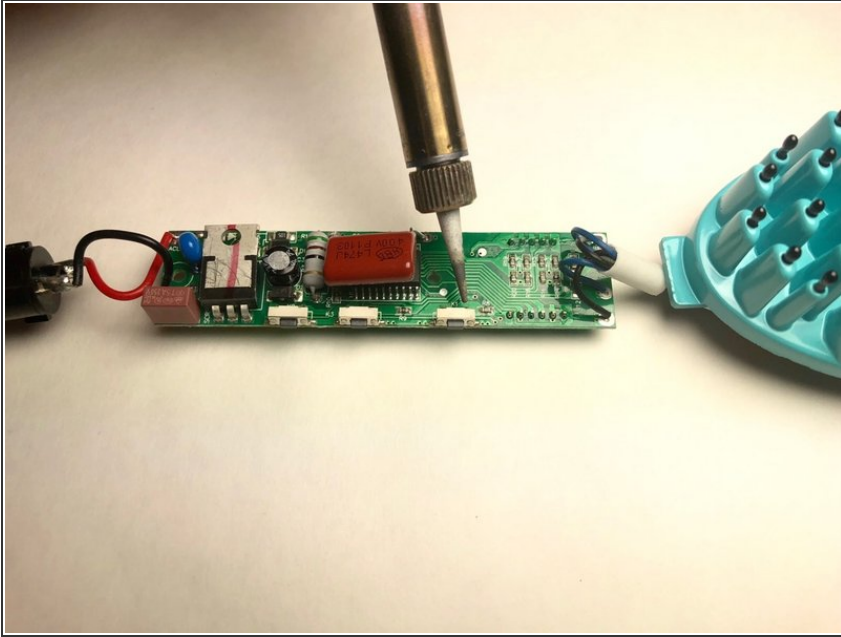
- Remove the circuit board and heating element from the handle.
- This will make it easier to work on for later steps.

Step 5



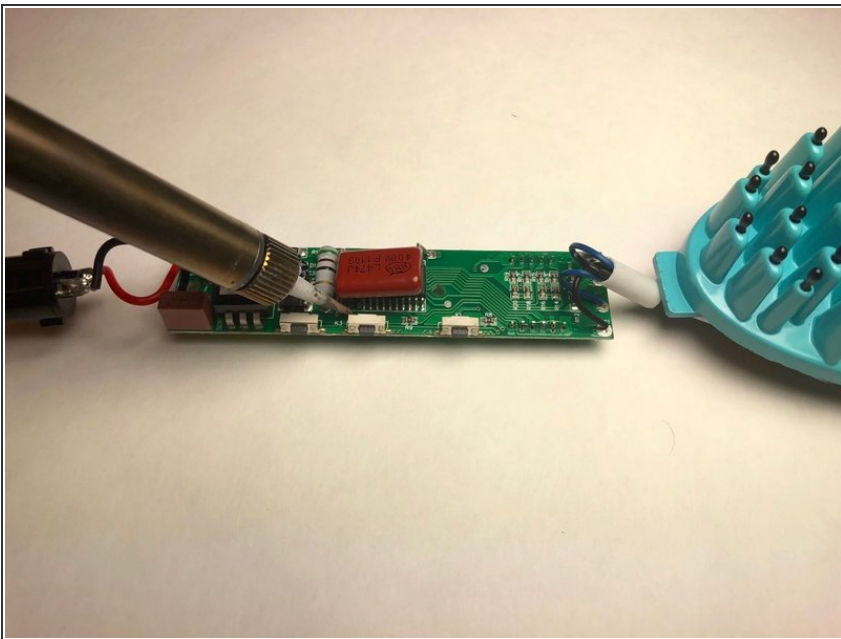
- Locate the three buttons on the bottom side of the circuit board.

Step 6



- Each button is soldered in four places on the circuit board. Using the soldering tool, melt each of these four points and remove the dysfunctional buttons.
- You may have to bend the dark red capacitor out of the way to reach the soldering points.
- [Soldering Technique Guide](#)

Step 7



- Now that the dysfunctional buttons are removed, use a soldering tool and solder to install the new buttons on the circuit board.
- Solder at the same four points as when previously melting these points to remove the buttons.

To reassemble your device, follow these instructions in reverse order.