



# Apalus Digital Hair Straightening Brush

## Heating Element Replacement

This guide will show how to replace the heating element in an Apalus Digital Hair Straightening Brush.

Written By: Aaron Brysch



This document was generated on 2020-02-08 05:13:11 AM (MST).

---

## INTRODUCTION

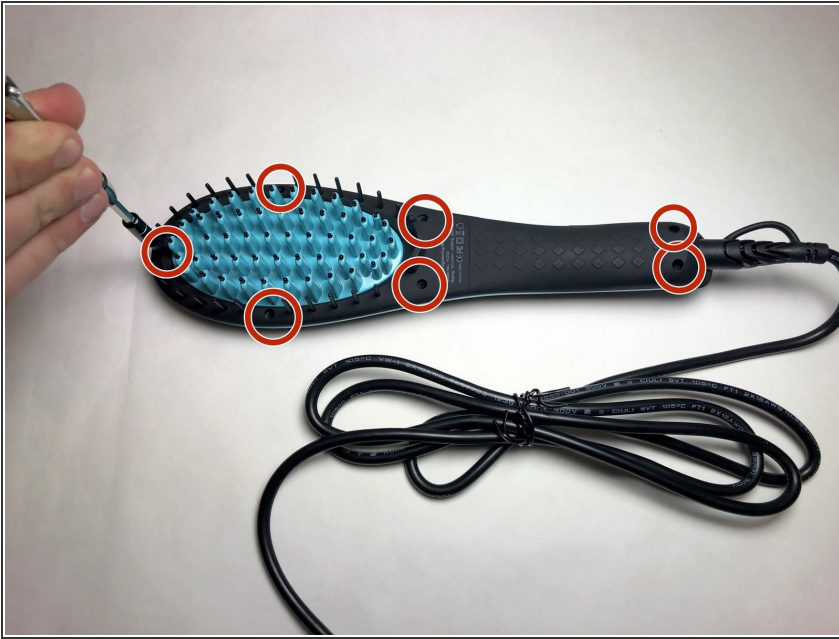
Use this guide if you need to replace the heating element of your Apalus Digital Hair Straightening Brush. If your brush is not heating up, this guide will walk you through how to take apart the brush in order to replace the heating element. Soldering is involved, so if you don't know how to solder take a look at this [How To Solder and Desolder Connections](#) guide.



### TOOLS:

- [Phillips #1 Screwdriver](#) (1)
  - [Soldering Iron](#) (1)
  - [Solder](#) (1)
  - [Phillips #2 Screwdriver](#) (1)
-

## Step 1 — Heating Element



- Remove the seven 5mm Phillips #1 screws on the comb-side of the brush.

## Step 2



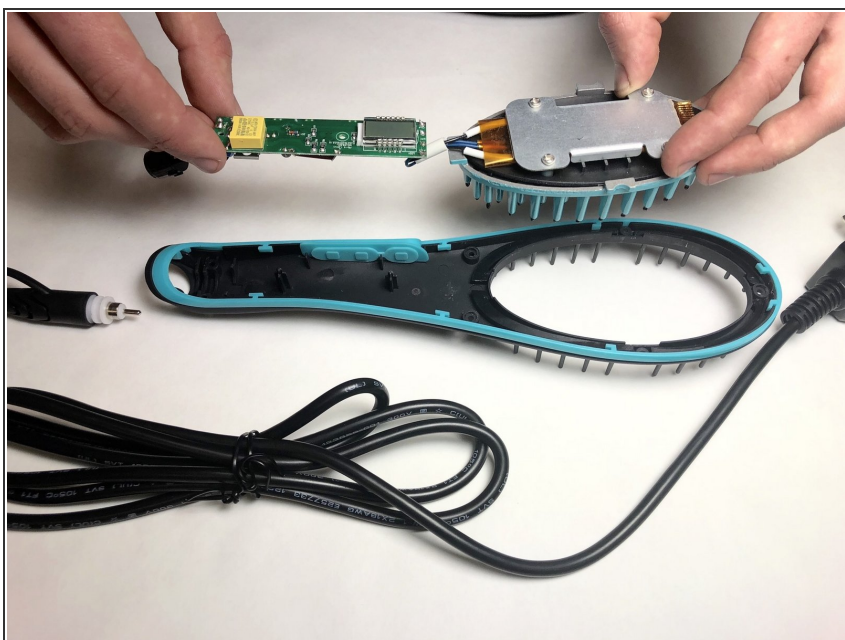
- Turn comb over so the bristles are facing down.
- Remove backside of the comb and place aside.

### Step 3



- Unplug the power cord from the connector inside of the brush.

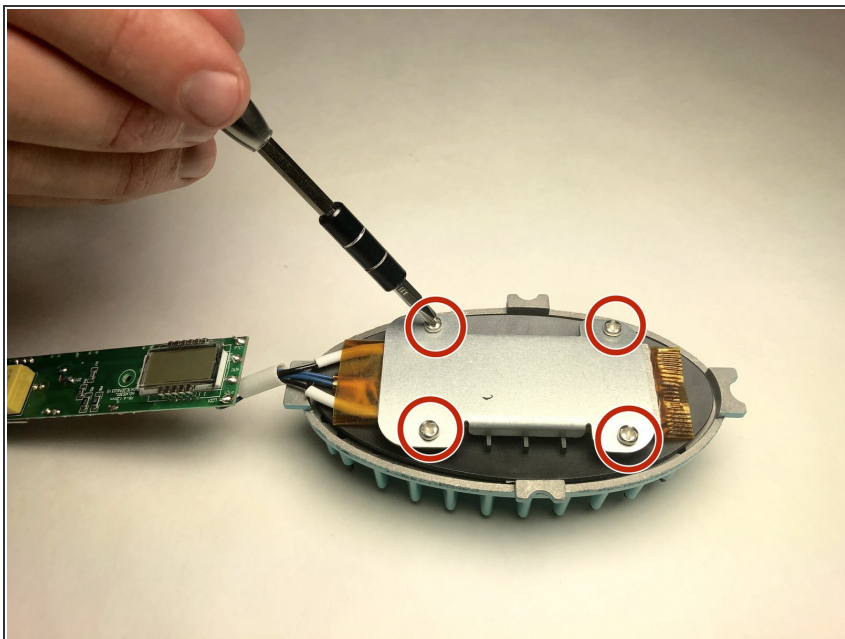
### Step 4



- Remove the circuit board and heating element from the handle.
- ⓘ This will provide easy access to the necessary components.

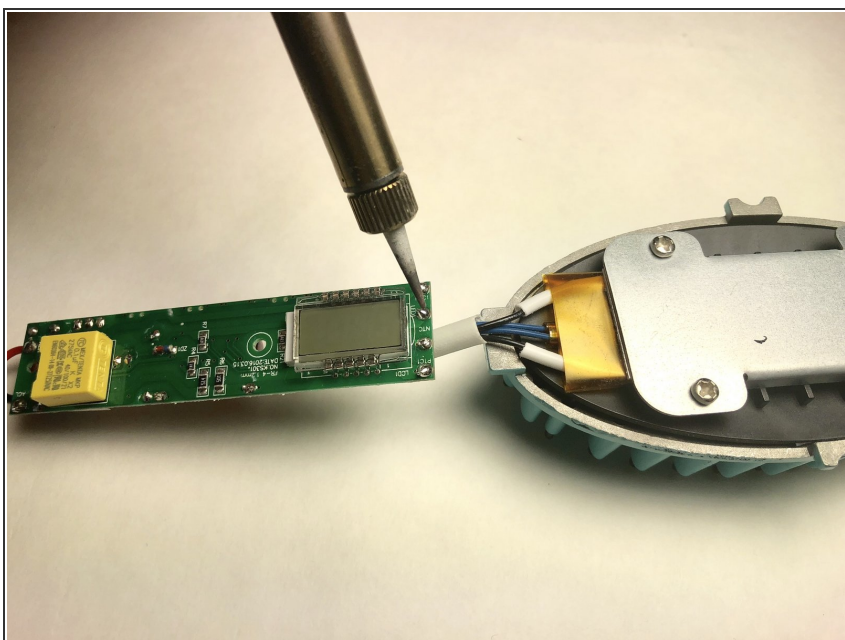


## Step 5



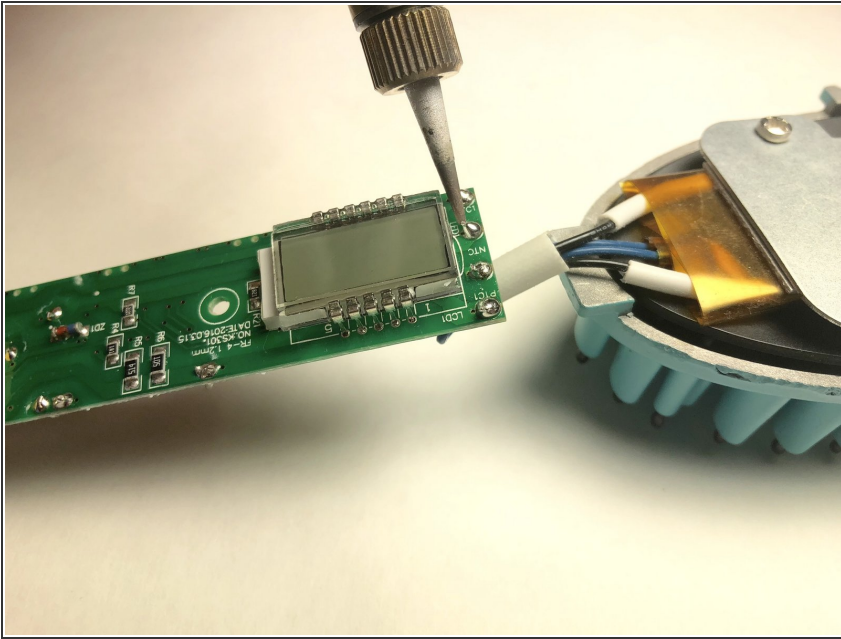
- Remove the four 6mm Phillips #2 screws holding the heat shield onto the back side of the bristles.

## Step 6



- There are 4 solder points of the heating element located on the LCD side of the circuit board.
- Desolder these four connections using a soldering iron.
- Note which wires go to each of the connection points.
- [Soldering Technique Guide](#)

## Step 7



- Solder the new heating element to the same connection points as they were removed from.

To reassemble your device, follow these instructions in reverse order.