



Apex Digital DTV Converter Box Power supply Board replacement

If the power supply board of your converter box died here is how to replace it.

Written By: Michel



INTRODUCTION

How to open the converter box and replace the power supply...



TOOLS:

- [Phillips #2 Screwdriver](#) (1)



PARTS:

- [Replacement Power Board](#) (1)

Step 1 — Power Board



- Unplug your device from the wall outlet.

Step 2



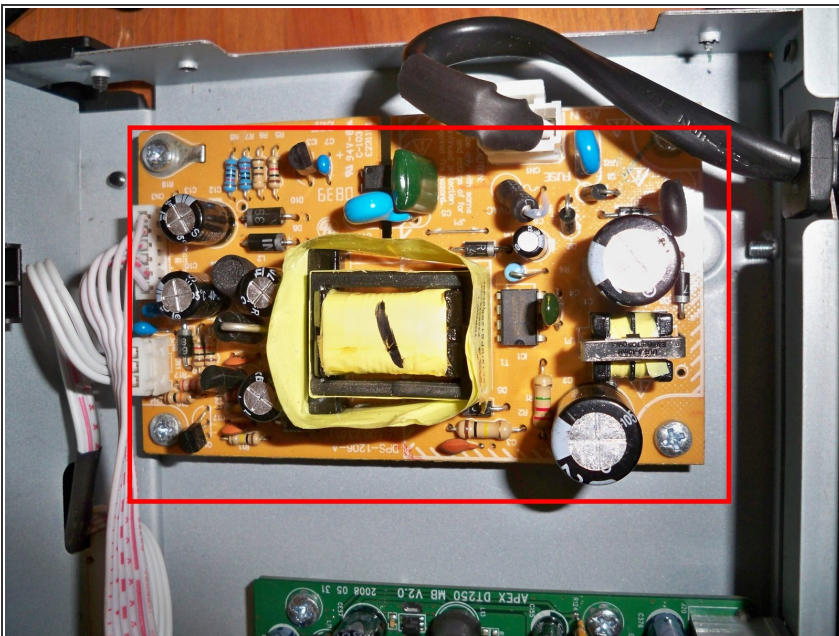
- Remove the screws on the sides and rear. There are two on each side and four on the back.
- Note: only remove the black ones (the silver ones stay for now). You should have removed eight identical screws by now.

Step 3



- Lift the top cover up and toward you simultaneously. It shouldn't require very much force.

Step 4



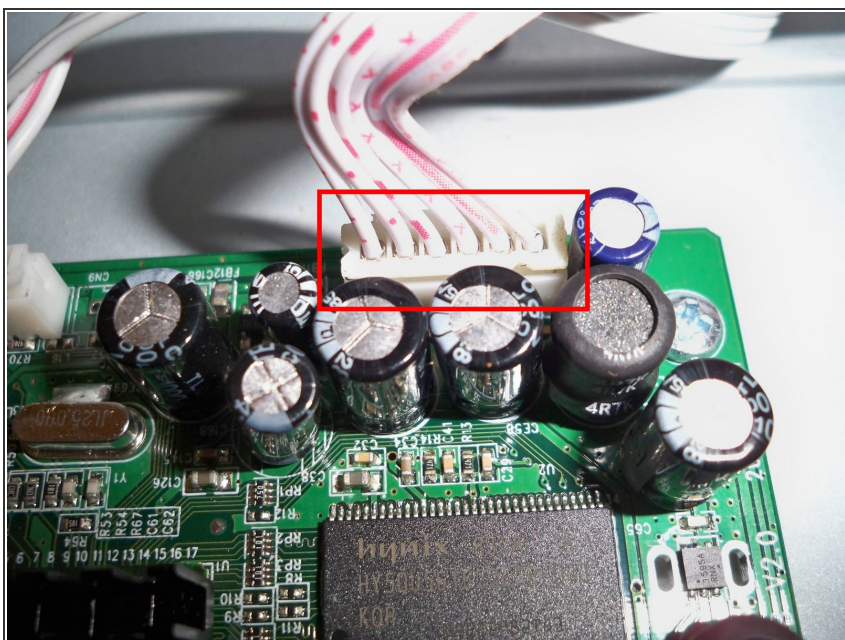
- Locate the power board inside the converter box.
- Circled in red in the picture.

Step 5



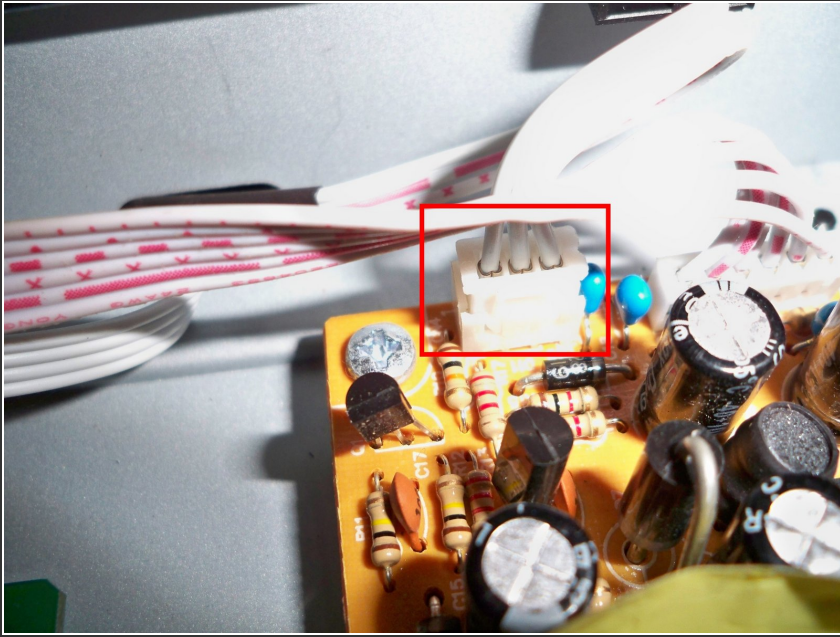
- Remove this plug
- You will need to squeeze the locking lever to release it. don't pull too hard.
- Circled in red in the picture.

Step 6



- Remove this plug from the main board. It is not detachable from the power board end.
- Be gentle.
- Circled in red in the picture

Step 7



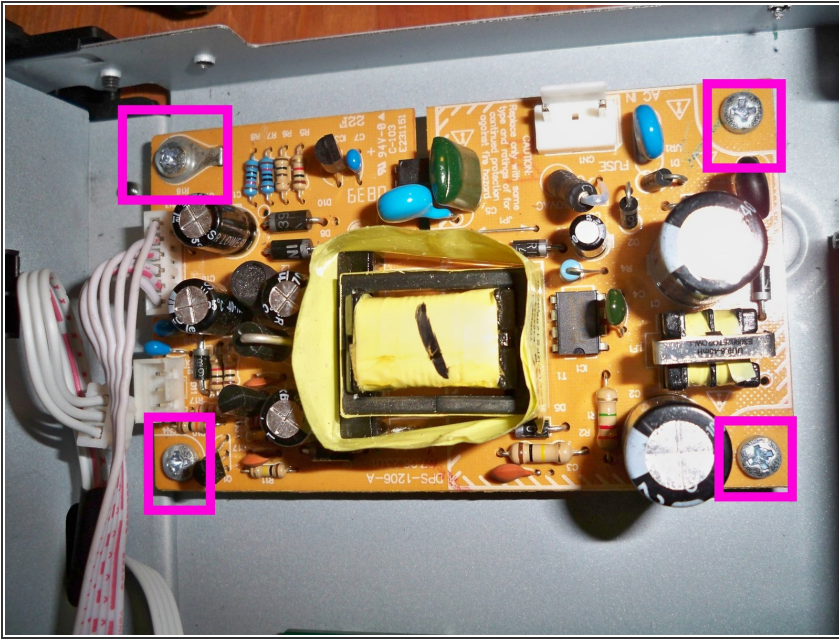
- Remove one last cable. This one leads to the front panel
- Be gentle.
- Circled in red

Step 8



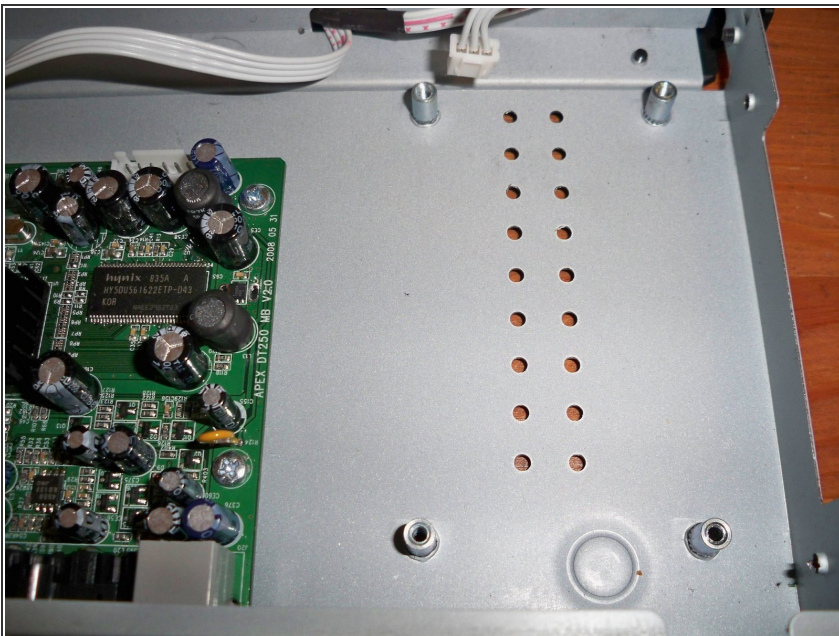
- Remove the power cord from its slot in the casing. This will make it easier to remove the power board.
- Circled in blue

Step 9



- Remove the four silver colored philips screws holding the power board in.
- Marked in pink (eeww)

Step 10



- Lift the power board out. Be careful to not touch the bottom of the power board. even when unplugged, it may still hold a charge.
- Here is the empty spot.

To reassemble your device, follow these instructions in reverse order.