



# Apex TM772 Battery Replacement

This guide will show the user how to remove and replace the battery on the Apex TM772.

Written By: Doran Van Bommel



# INTRODUCTION

This guide will show the user how to remove and replace the battery on the Apex TM772.



## TOOLS:

- [iFixit Opening Tools](#) (1)
- [Tweezers](#) (1)
- [Plastic Cards](#) (1)
- [Soldering Iron](#) (1)



## PARTS:

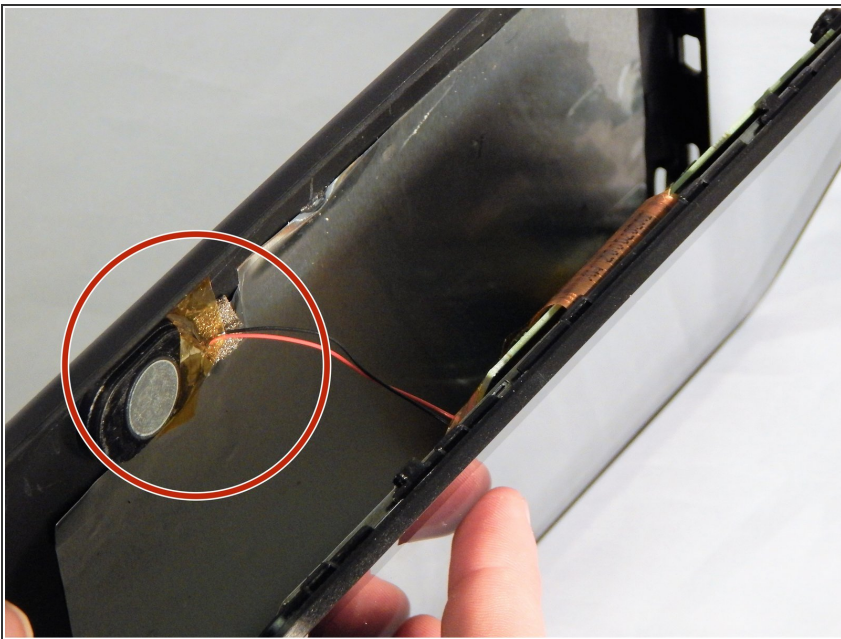
- [Apex TM772 Battery](#) (1)

## Step 1 — Casing



- Begin by inserting the plastic opening tool into the seam between the back and front of the case and carefully pry the back from the front.

## Step 2



- Moving along the seam continue to pry the case apart.
- ⚠ The internal speaker is adhered to the inside of the back casing. There are two wires that connect the speaker to the circuit board and may be damaged if care is not taken. Once open the speaker may be removed from the back casing by removing the tape holding the speaker with either tweezers or your fingers.

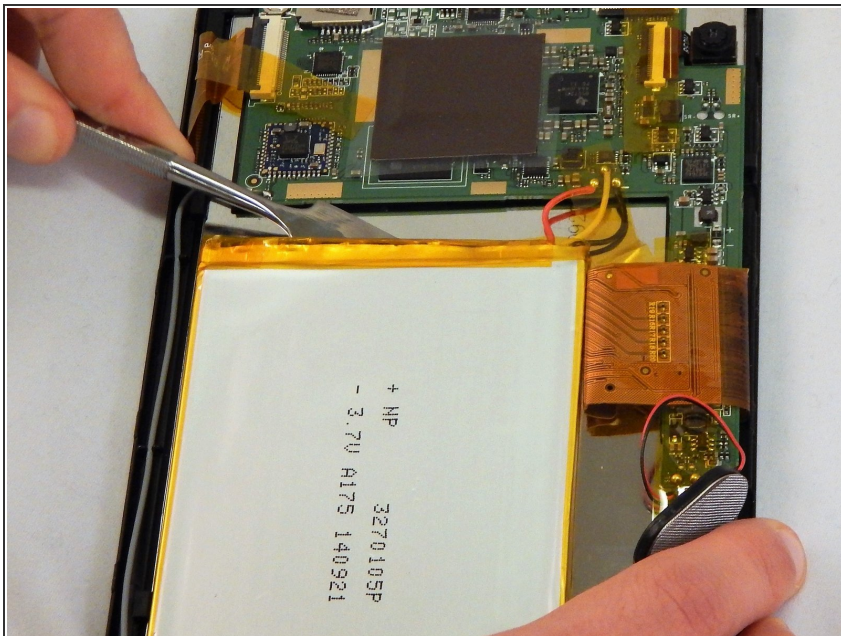


## Step 3



- The back panel should now be disconnected from the device. This provides access to the components of the device for repairing and replacing parts of the tablet.

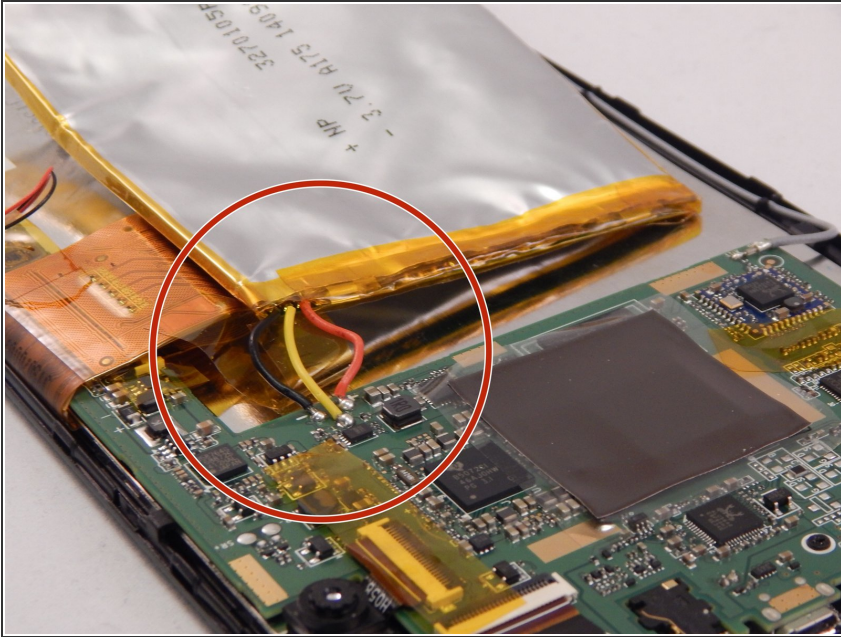
## Step 4 — Battery



- ⚠ Do Not use metal tools to remove the battery as the battery is soft and pliable. Use extreme caution to avoid damage to the battery if it needs to remain intact. Use a plastic card or nylon tool to remove battery from adhesive.
- Using tweezers or your fingers, remove the yellow tape from the battery.

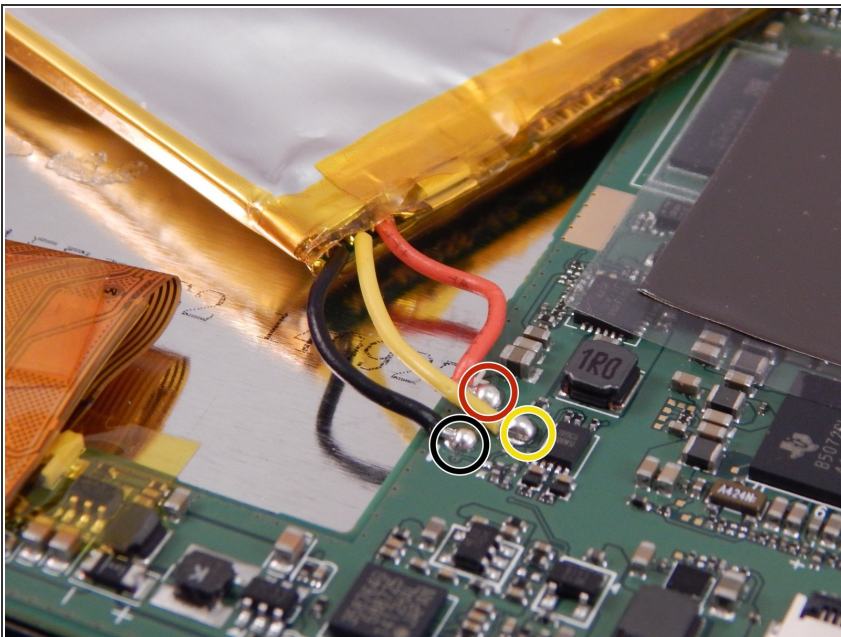
- Using a plastic card or nylon tool, carefully separate battery from case by sliding the tool under battery to loosen adhesive.

## Step 5



- For soldering instructions, refer to the [iFixit Soldering Guide](#)
- To remove battery, Locate the soldering points where the three wires are connected. Desolder these attachments from the motherboard.

## Step 6



- Solder the wire connection of the red wire to the positive (+) position on the left
- Solder the wire connection of the yellow wire to the center position that is slightly above the positive (+) and the negative (-) positions. This is the ground.
- Solder the wire connection of the black wire to the negative (-) position on the right.

To reassemble your device, follow these instructions in reverse order.