



Apple 3.5 Drive External Floppy Drive Teardown

This guide will show the disassembly down to the bare internal drive and other components of the Apple 3.5 Drive.

Written By: rockinkat



INTRODUCTION

The goal of this tear down is to cover how to conduct basic disassembly of the drive unit without damaging components as well as discuss repair options for typical mechanical failures of the drive mechanism within.



TOOLS:

- [Phillips #2 Screwdriver](#) (1)
 - [2x Small Flathead Screwdrivers](#) (1)
-

Step 1 — The Apple 3.5 Drive



- On front from left to right it has an Activity LED, the floppy slot, and a soft eject button to engage the electronic eject function of the floppy drive.
- The eject button has a hole at its center through which the user can insert a paperclip to manual eject a stuck floppy.
- At back from left to right is the pass through 19-pin connector for daisy-chaining more drives, a plastic loop for a kensington lock, and the hardwired cable for plugging into the computer or earlier drive in the chain.
- When new this drive came with a plastic cover over the daisy-chain port. It is very rare to find a drive that still has this cover, though if one is present it can be removed with a flat tip screw driver.
- [IMPORTANT]Apple floppy drives should never be connected or disconnected while the computer is on as it can damage the floppy controller on the computer's logic board.

Step 2 — Tools Needed



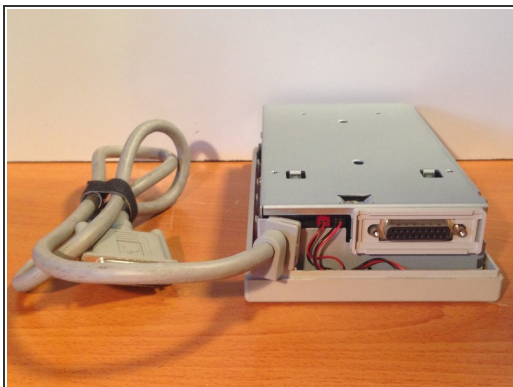
- One #2 Philips screw driver
- Two small jewelers flat tip screw drivers.

Step 3 — Opening the Case



- Flip the drive upside down.
- Use the #2 Philips screw driver to remove the four screws from the bottom.
- Hold down the drive cable while lifting up on the bottom of the case to open the drive.

Step 4 — Removing the Case Top



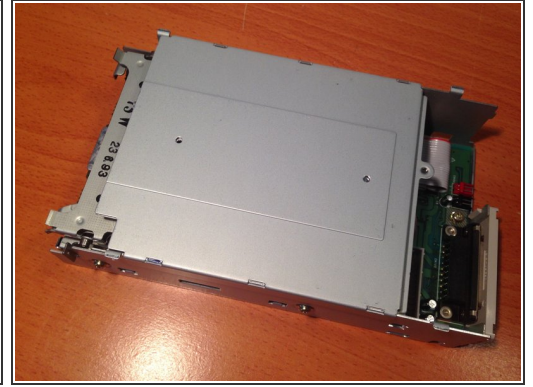
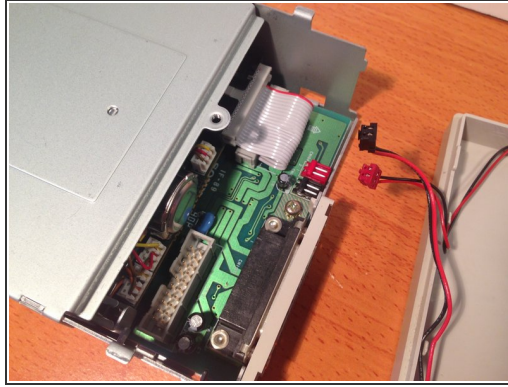
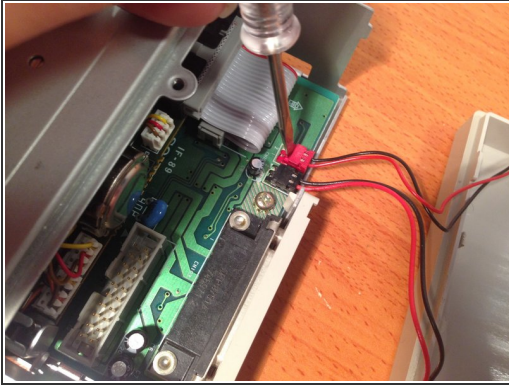
- Take the metal chassis in one hand and the case top in the other and slide the top forward to release the chassis from the tabs on the case top.
- Place the case top next to the metal chassis.
- Be careful not to strain the wires leading to the activity LED and the soft eject button. Do not attempt to disconnect these wires yet.

Step 5 — Removing the Rear Chassis Cover and External Cable



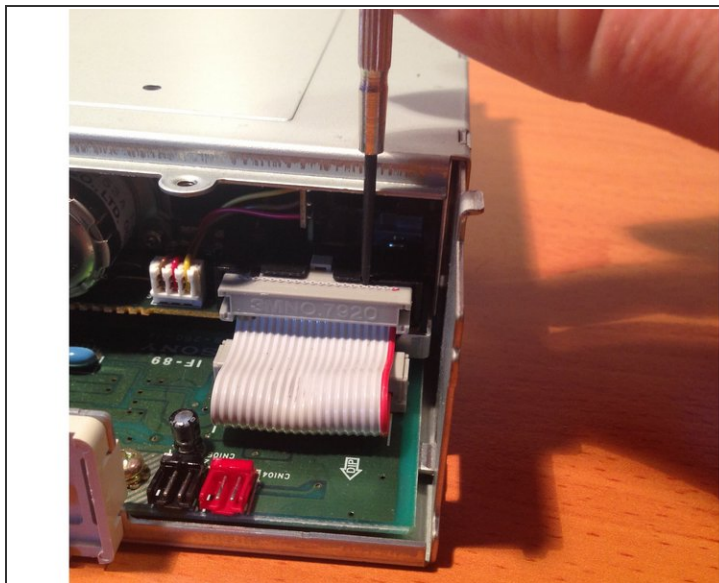
- Use a #2 Philips to remove the screw holding the rear chassis cover in place.
- Pull the rear cover up to one side.
- Grip the cable connector firmly and pull up to disconnect.
- You may disconnect the cable from the rear cover by using a #2 Philips to unscrew it.

Step 6 — Disconnecting the Eject Button and Activity LED Cables From Main Board



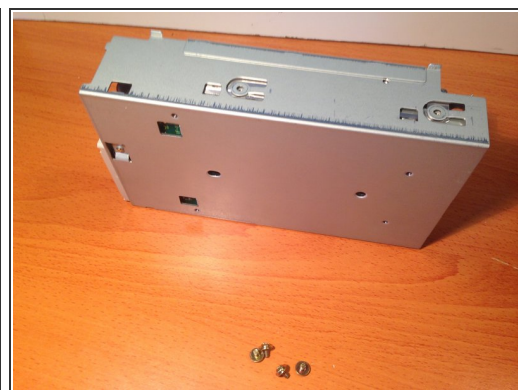
- Use a small jewelers flat tip screw driver to gently pry the cable ends from their connector headers.
- Red header is the Activity LED
- Black header is the Eject button

Step 7 — Disconnecting the Internal Floppy Cable



- Insert a small Jewelers flat tip into the two slots on top of the internal floppy connector to gently pry the cable from the connector.
- You can lean the screw driver against the metal chassis for leverage.
- Be sure to alternate the screw driver from end to end of the connector while prying it out to avoid damaging the connector header.

Step 8 — Unscrewing the Floppy Mechanism From Chassis



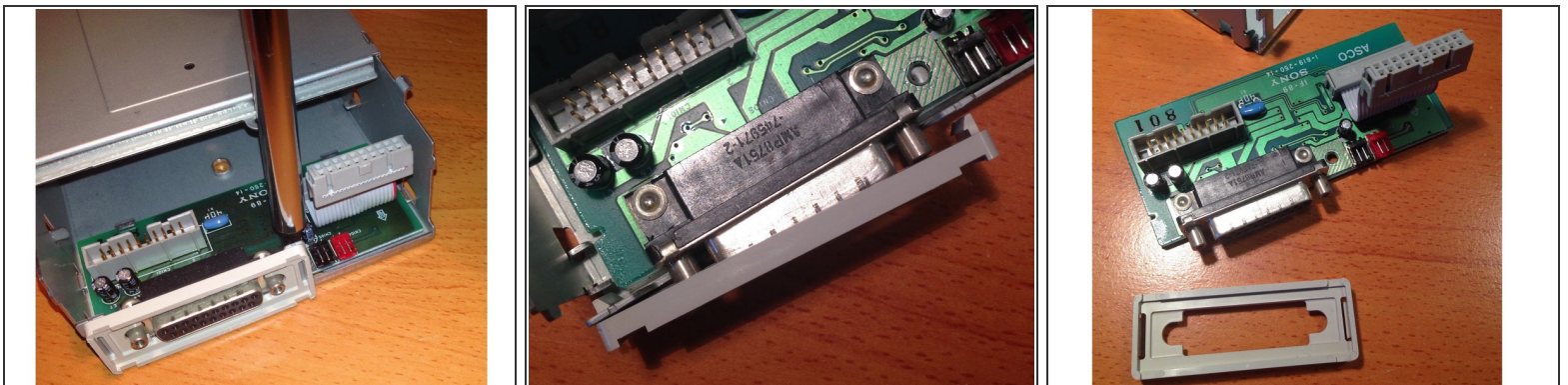
- The floppy mechanism is held the chassis with two screws on either side.
- Use a #2 Philips to remove the four screws.

Step 9 — Removing the Floppy Mechanism From the Chassis



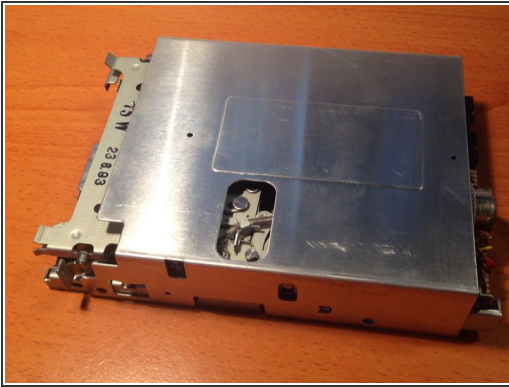
- Slide the drive mechanism out the front of the chassis by pushing it in the back and then pulling it out the front.

Step 10 — Removing the Main Board From the Chassis



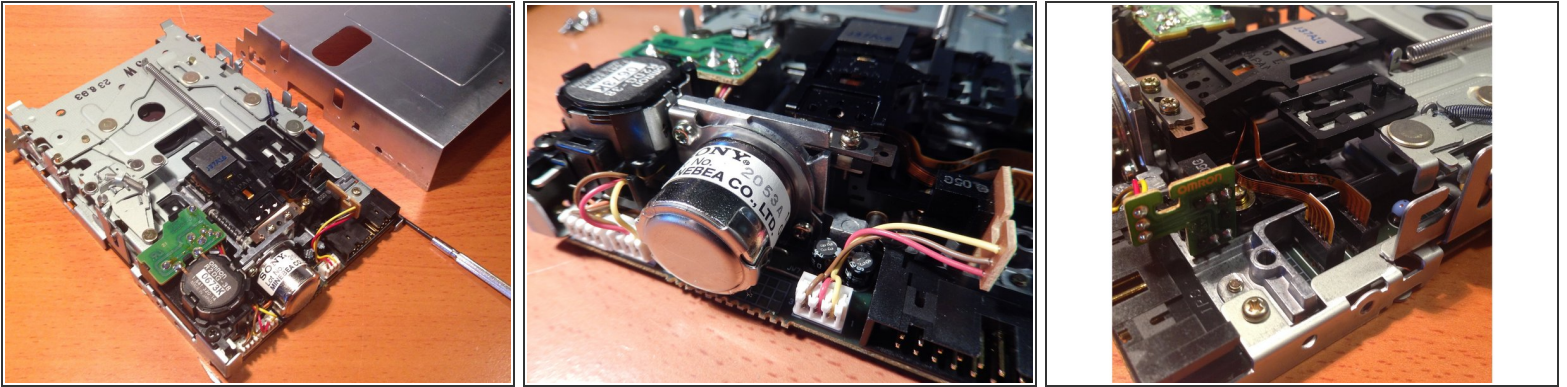
- Use a #2 Philips to remove the one screw holding the board in place.
- Unclip the bezel from the daisy-chain port.
- Tilt the board up and out.

Step 11 — Removing the Top Cover From Floppy Mechanism



- Insert a flat tip jewelers screw between the drive and top cover on either side of the rear of the mechanism.
- Lift the rear of the top cover up and pull the top cover back, off the drive.
- This Apple 3.5 drive had its original Double Density 800K mechanism replaced with the later High Density 2.0MB/1.44MB mechanism, so yours may appear slightly different.

Step 12 — Basic Overview of Floppy Drive Mechanism and Typical Failures



- The floppy mechanism consists of a PCB with drive rotating motor, stepper motor for the read/write head, motor for drive eject/auto insertion, chassis, and floppy sled/eject/insertion/ mechanism.
- [IMPORTANT] Attempting to remove the read/write head from the drive mechanism chassis will ruin alignment and it is not possible to correct without special equipment.
- The drive can fail to insert or eject floppies if the grease/lubricant on the tray and it's moving parts has become caked up with dust or hardened over time.
- Old lubricant can be loosened up and removed using lighter fluid as a solvent, dripping it into the joints of moving parts being careful not to drip it inside onto the PCB and wiping away what can be reached. Tooth picks and cotton swabs can be used to clear out tight spaces.
- Afterward, a lubricant like white lithium grease can be used to moving parts with a toothpick and a cotton swab, being careful not to get excess anywhere but where it is absolutely needed.
- At the right rear of the drive is the Omron branded eject/insert motor and an assembly of gears related to it. This can fail if gears connected to it have cracked or the lubricant has hardened. If further disassembled, it can be cleaned out, and 3D printed replacement gears for this are available [online for order](#). Teardown author has no affiliation with seller.
- The screw gear which moves the read/write heads forward and backward can have its threads blocked by hardened lubricant. This can be cleaned up and relubricated much in the same way as the drive tray parts.
- If the main PCB of the mechanism is to be removed for repair/recap it is important to make sure all connector headers and flex circuit cables are disconnected. It is important to be especially careful when disconnecting flex circuit cables for the read/write head as they can be easily cracked.

Step 13 — Apple 3.5 drive External Drive Parts Breakdown



- All parts disassembled.