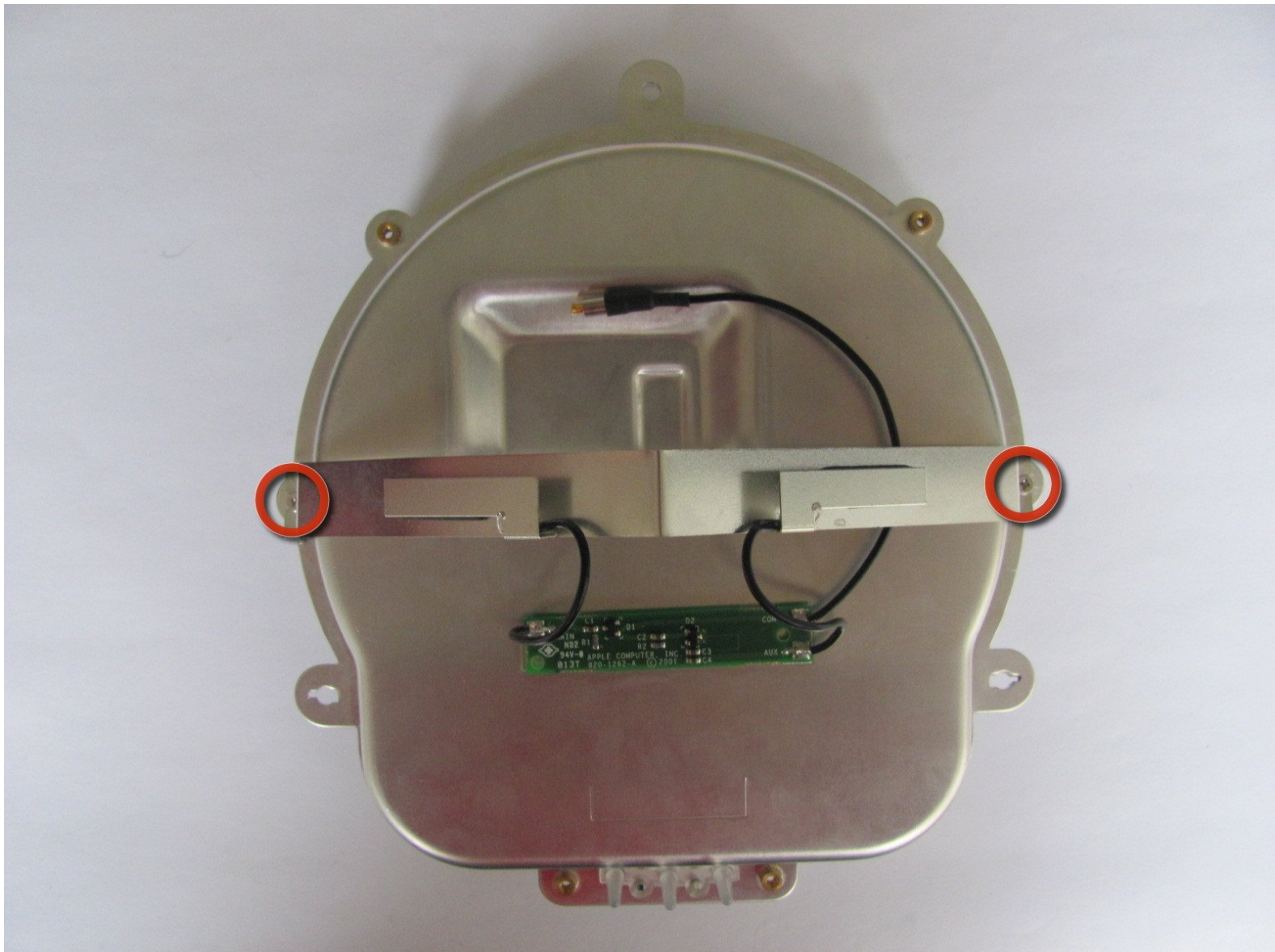




# Apple AirPort Extreme Model A1034 Antenna Replacement

Guide to replacing the antenna on an AirPort Extreme A1034

Written By: Michael Garcia



---

## INTRODUCTION

Replace a faulty antenna on the AirPort Extreme Model A1034.



### TOOLS:

- [Phillips #00 Screwdriver](#) (1)
  - [T7 Torx Screwdriver](#) (1)
-

## Step 1 — Outer Case



- Remove the three 14.3mm T7 Torx screws from the bottom of AirPort.

## Step 2



- Remove the 5.1mm Phillips screw from the bottom of the AirPort. This screw is located under the identification sticker. You will have to remove the sticker or make a hole to remove it.

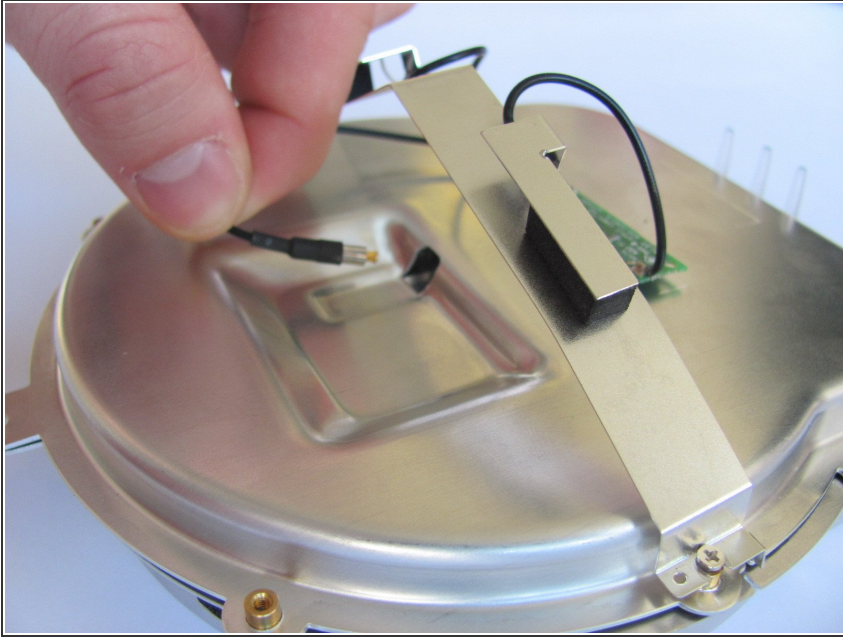
## Step 3



- Lift the bottom and top casing straight apart and then lift metal casing straight up from the bottom plastic casing.

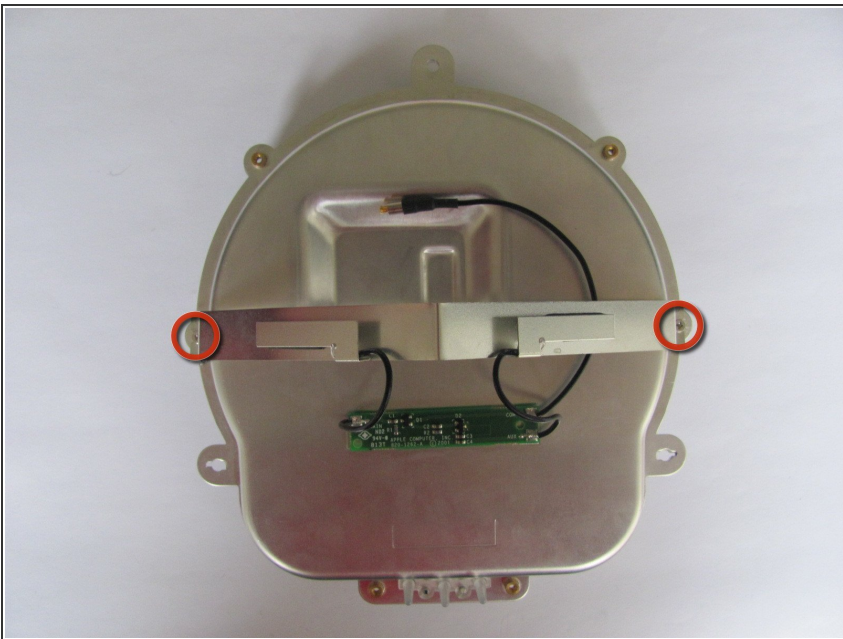


## Step 4



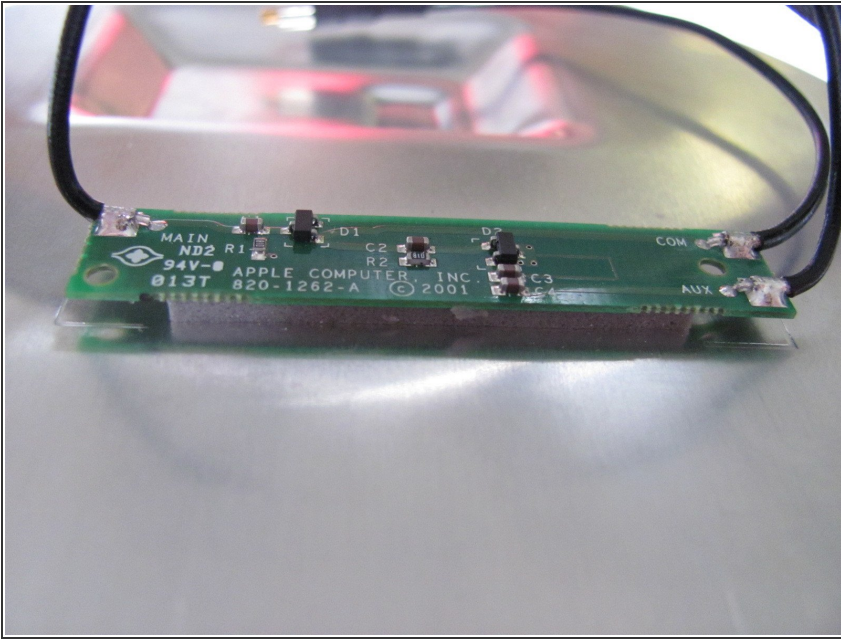
- Unplug the black connector on the top of the metal casing by gently pulling horizontally.

## Step 5 — Antenna



- Remove the two 4mm phillips screws to remove antenna.

## Step 6



- The circuit board connected to the antenna is attached to the metal case with foam adhesive.
- Gently peel or cut the foam holding the circuit board with a knife and remove it from the AirPort.

To reassemble your device, follow these instructions in reverse order.