



Apple AirPort Extreme Model A1034 Internet Card Replacement

Written By: Michael Garcia





TOOLS:

- [Phillips #00 Screwdriver](#) (1)
-

Step 1 — Outer Case



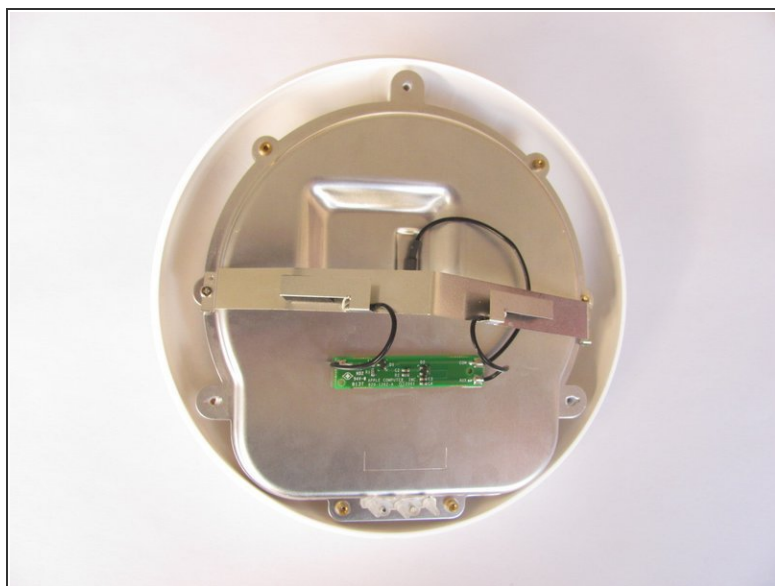
- Remove the three 14.3mm T7 Torx screws from the bottom of AirPort.

Step 2



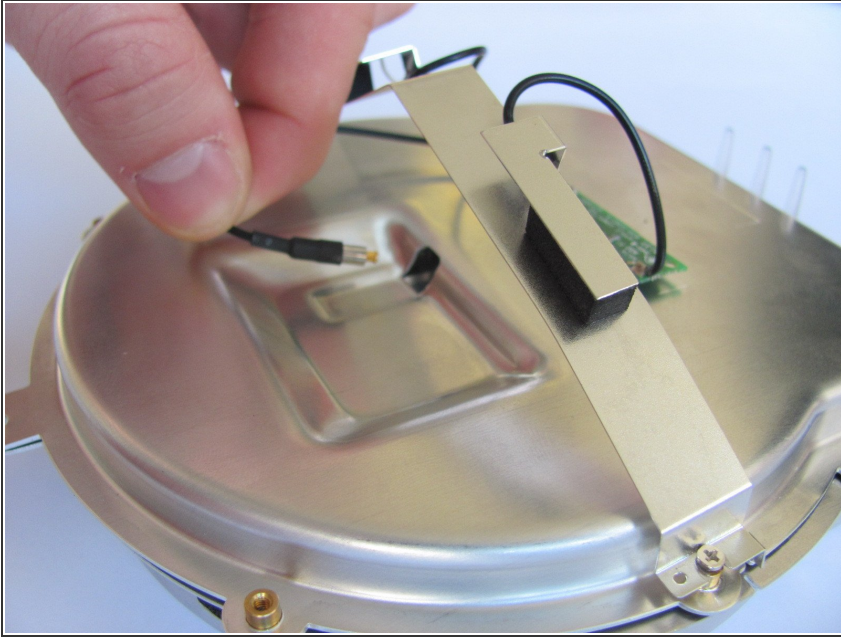
- Remove the 5.1mm Phillips screw from the bottom of the AirPort. This screw is located under the identification sticker. You will have to remove the sticker or make a hole to remove it.

Step 3



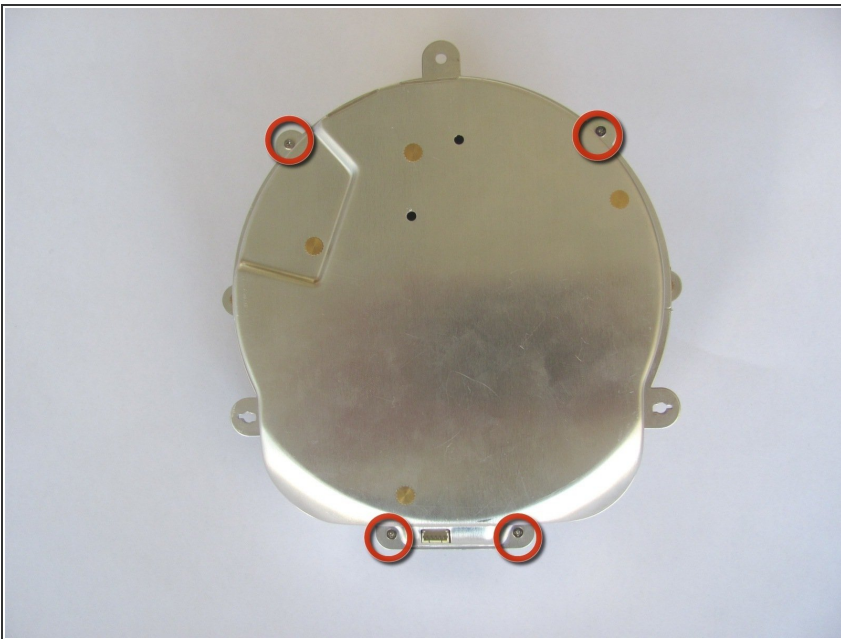
- Lift the bottom and top casing straight apart and then lift metal casing straight up from the bottom plastic casing.

Step 4



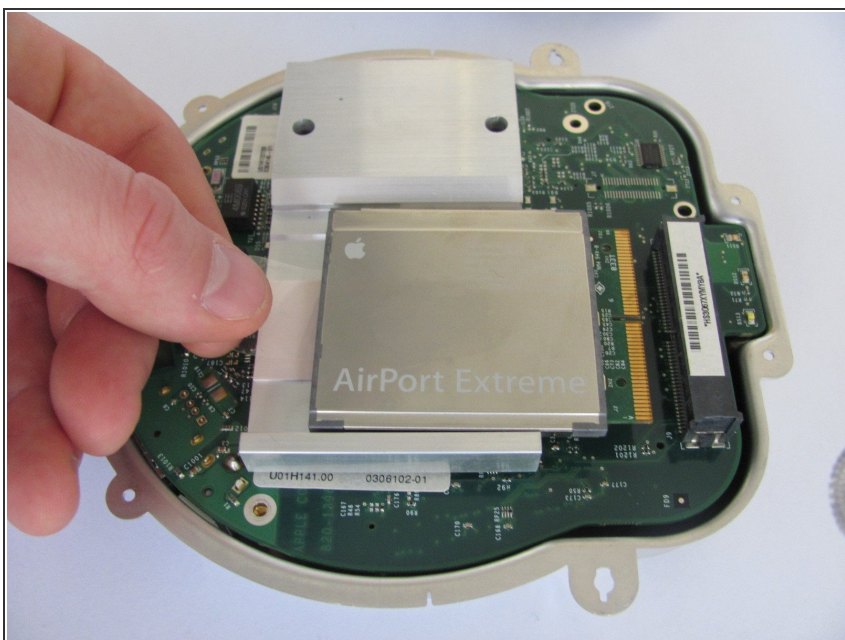
- Unplug the black connector on the top of the metal casing by gently pulling horizontally.

Step 5 — Internet Card



- Remove four 1mm phillips screws from the bottom.

Step 6



- Separate the top and bottom of the metal casing. You will now expose the motherboard and AirPort card.
- To remove the AirPort card, gently pull the plastic tab horizontally.

To reassemble your device, follow these instructions in reverse order.