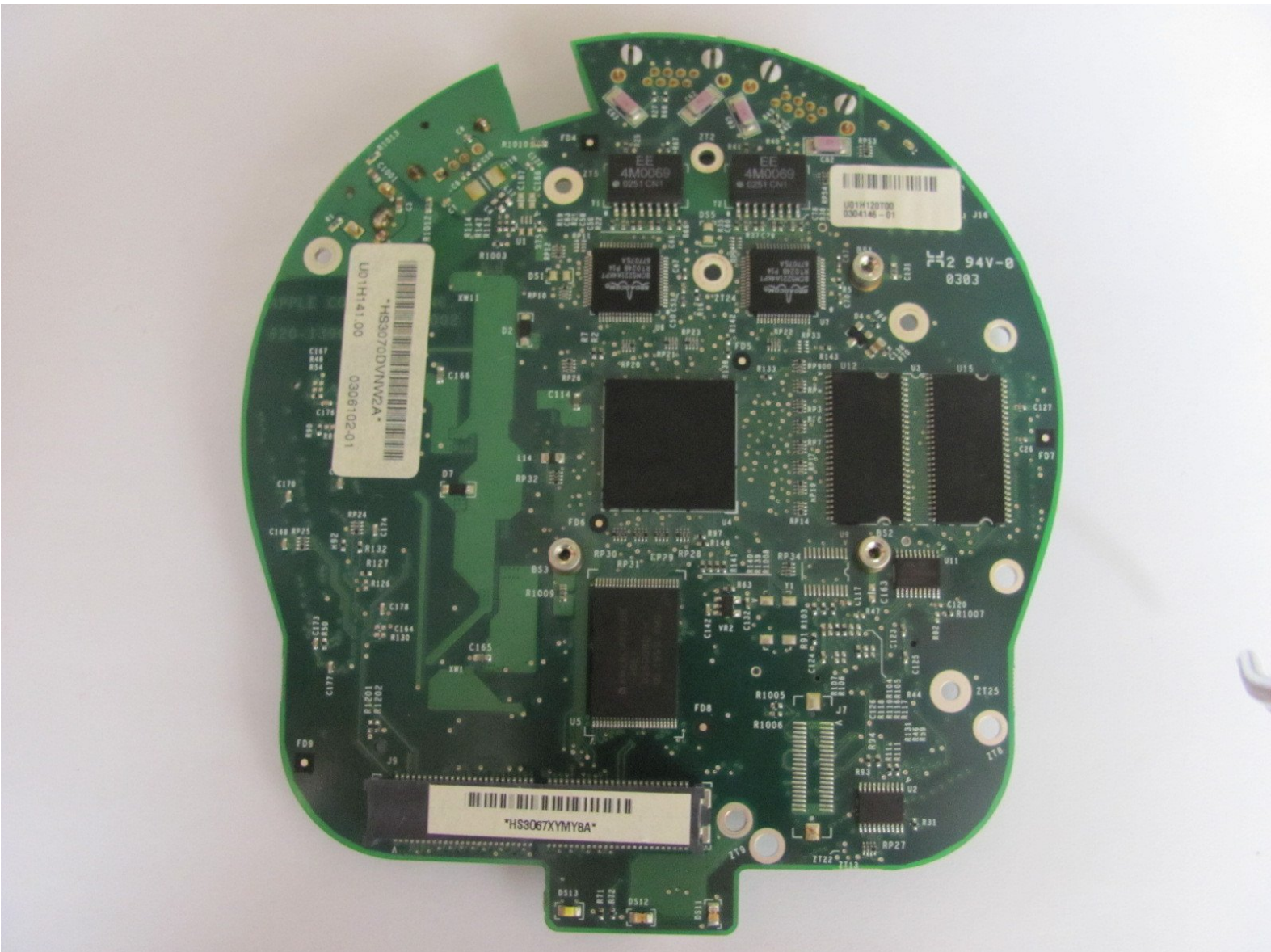




# Apple AirPort Extreme Model A1034 Motherboard Replacement

This guide will show you step by step how to disassemble the Apple AirPort Extreme Base Station and replace the motherboard.

Written By: Michael Garcia



This document was generated on 2019-09-19 07:08:13 AM (MST).



## TOOLS:

- [Phillips #00 Screwdriver](#) (1)
- [T7 Torx Screwdriver](#) (1)

## Step 1 — Outer Case



- Remove the three 14.3mm T7 Torx screws from the bottom of AirPort.



## Step 2



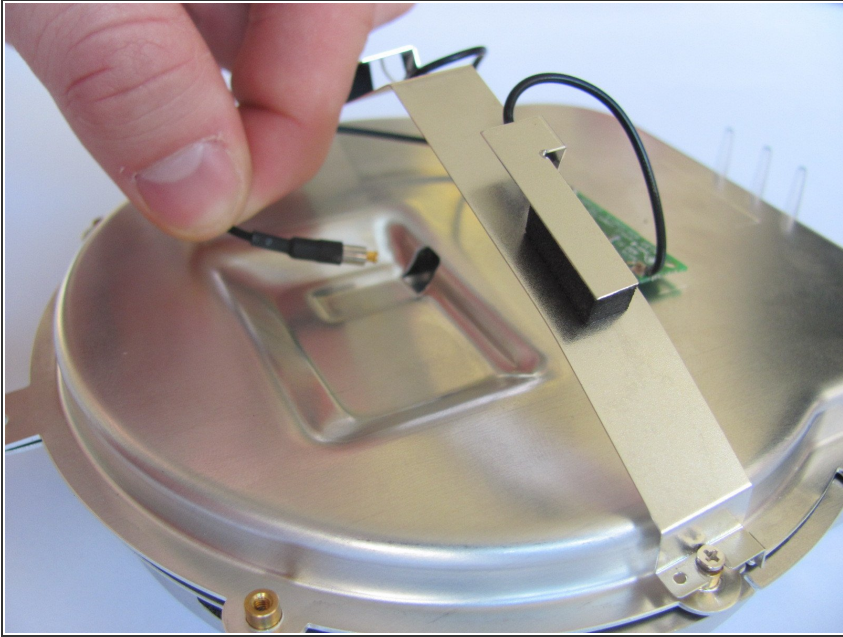
- Remove the 5.1mm Phillips screw from the bottom of the AirPort. This screw is located under the identification sticker. You will have to remove the sticker or make a hole to remove it.

## Step 3



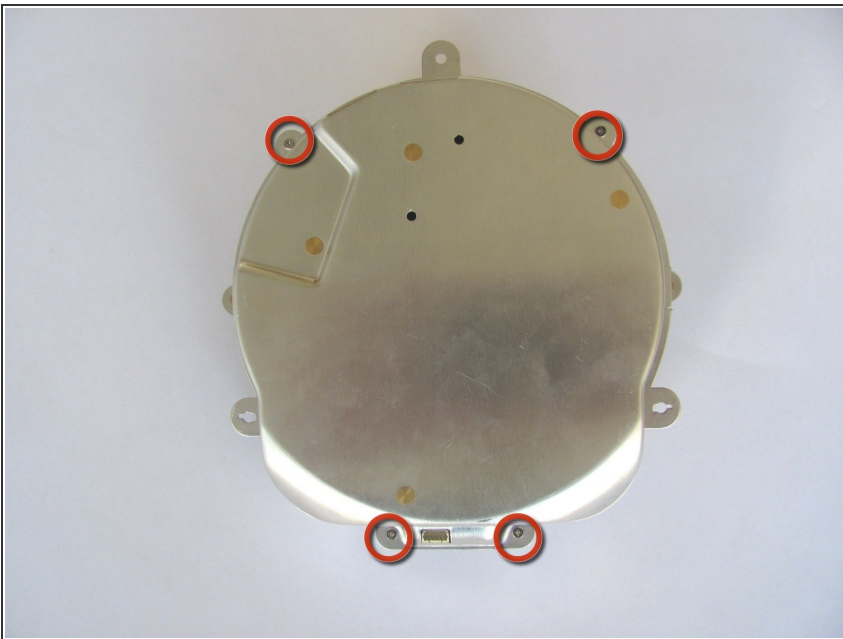
- Lift the bottom and top casing straight apart and then lift metal casing straight up from the bottom plastic casing.

## Step 4



- Unplug the black connector on the top of the metal casing by gently pulling horizontally.

## Step 5 — Motherboard



- Remove the four 4.3mm phillips screws from the bottom of the metal casing.

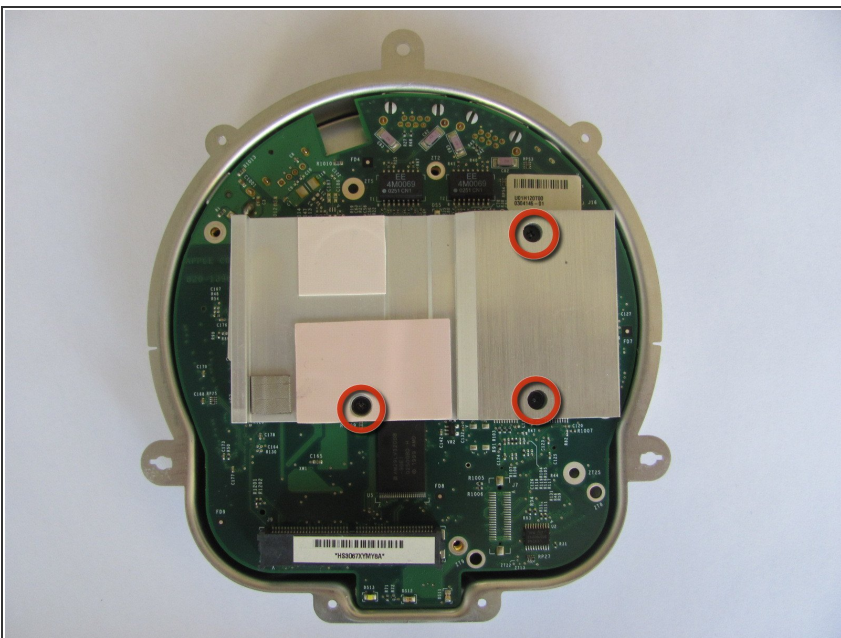


## Step 6



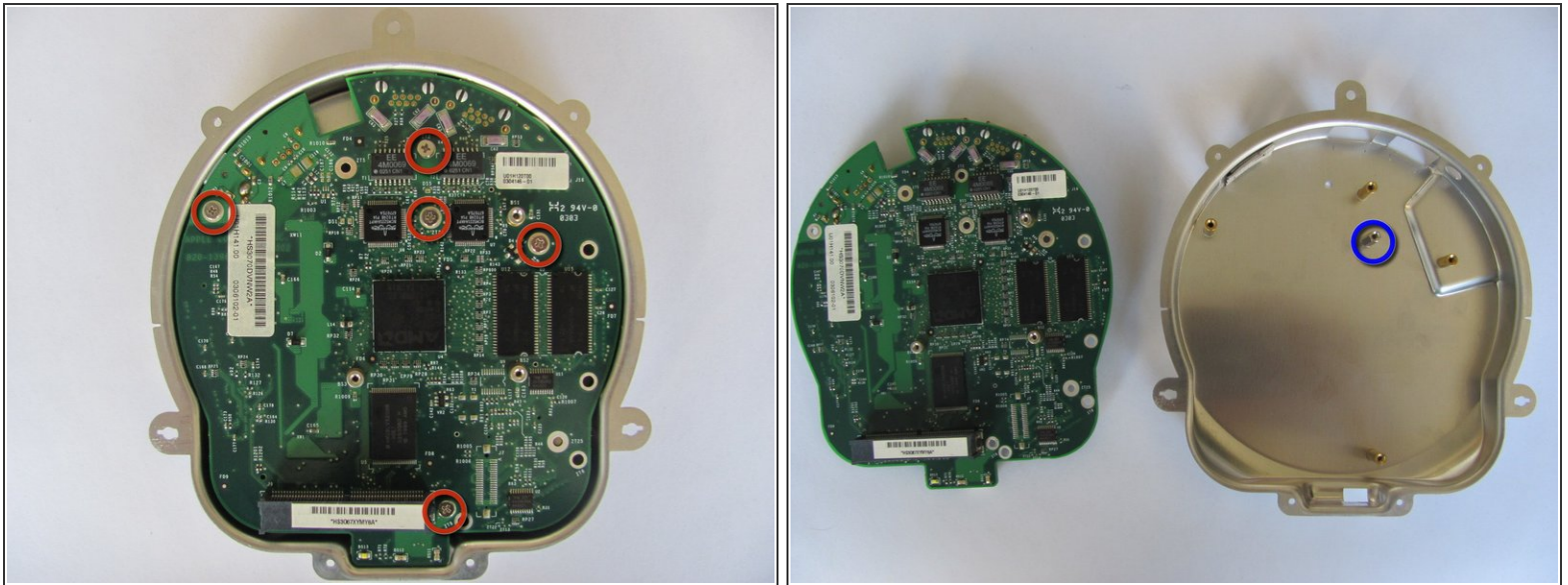
- Lift and separate the top and bottom of the metal casing. You will now expose the motherboard and the AirPort card.
- To remove the AirPort card, gently pull the plastic tab horizontally.

## Step 7



- Locate and remove the three 5.0mm Phillips screws from the heat sink.
- Lift to remove the heat sink from the motherboard.

## Step 8



- Locate and remove the five 7.5mm phillips screws from the motherboard.
  - Lift and separate the motherboard from the bottom metal casing.
- ⚠ There will be a loose hexagonal female screw extender under the motherboard.

To reassemble your device, follow these instructions in reverse order.