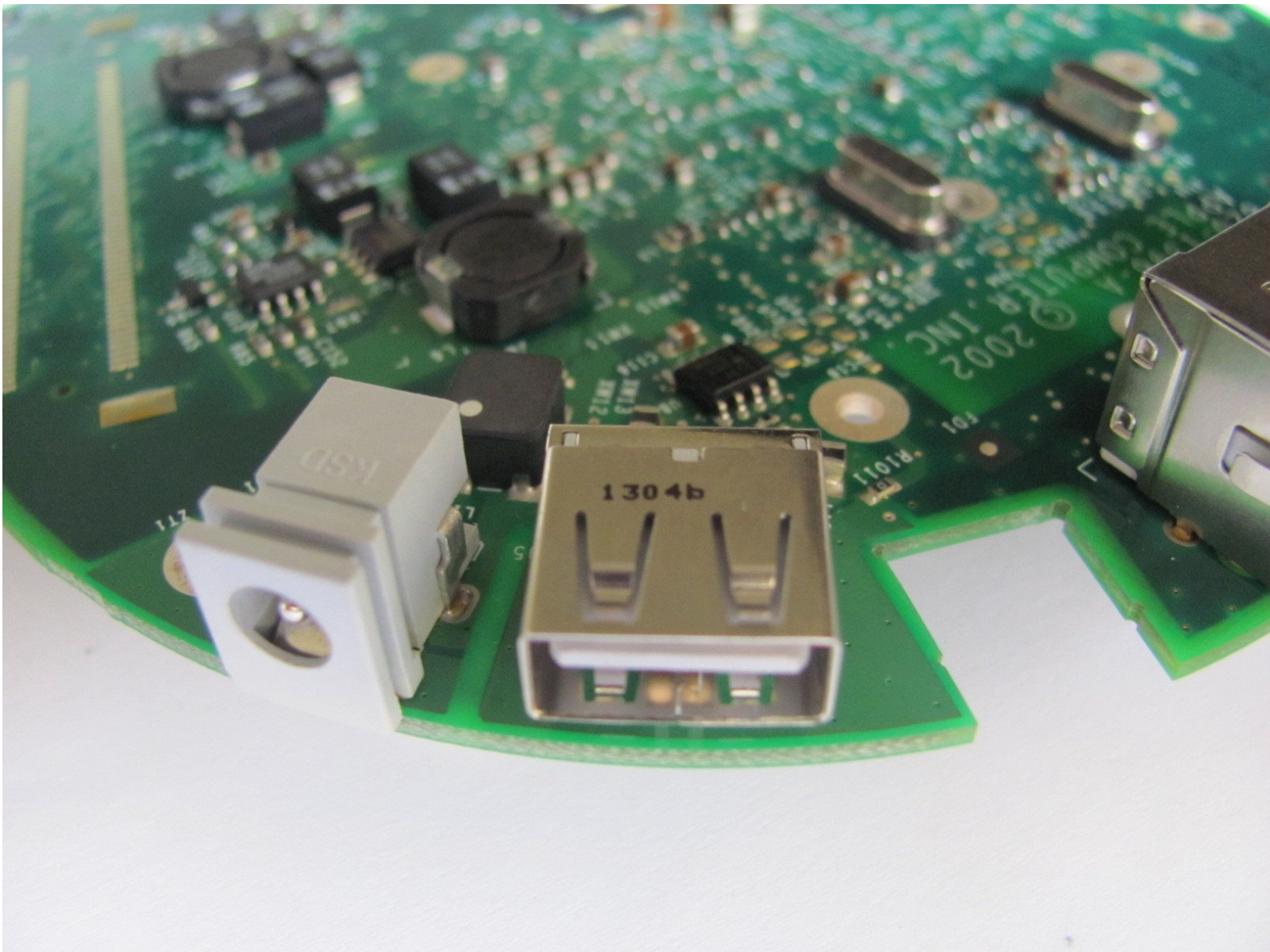




Apple AirPort Extreme Model A1034 USB Port Replacement

Written By: Michael Garcia





TOOLS:

- [Desoldering Braid](#) (1)
- [Phillips #00 Screwdriver](#) (1)
- [Solder](#) (1)
- [Soldering Iron](#) (1)
- [T7 Torx Screwdriver](#) (1)

Step 1 — Outer Case



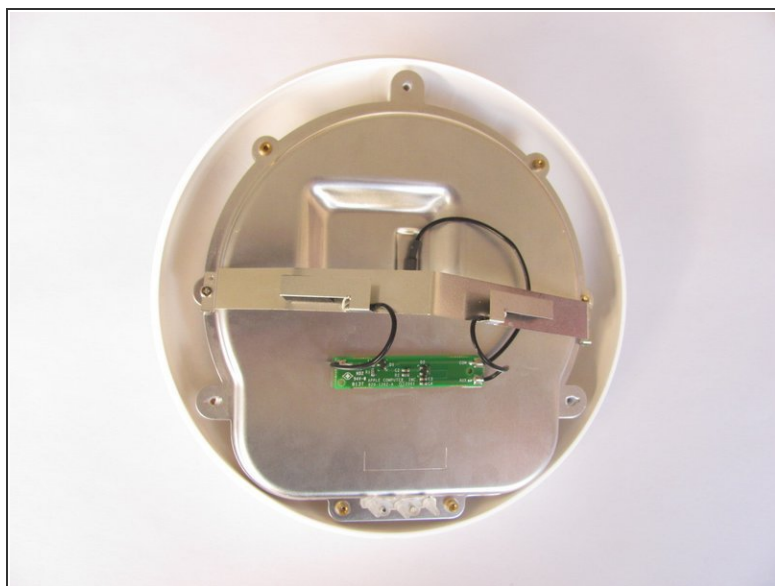
- Remove the three 14.3mm T7 Torx screws from the bottom of AirPort.

Step 2



- Remove the 5.1mm Phillips screw from the bottom of the AirPort. This screw is located under the identification sticker. You will have to remove the sticker or make a hole to remove it.

Step 3



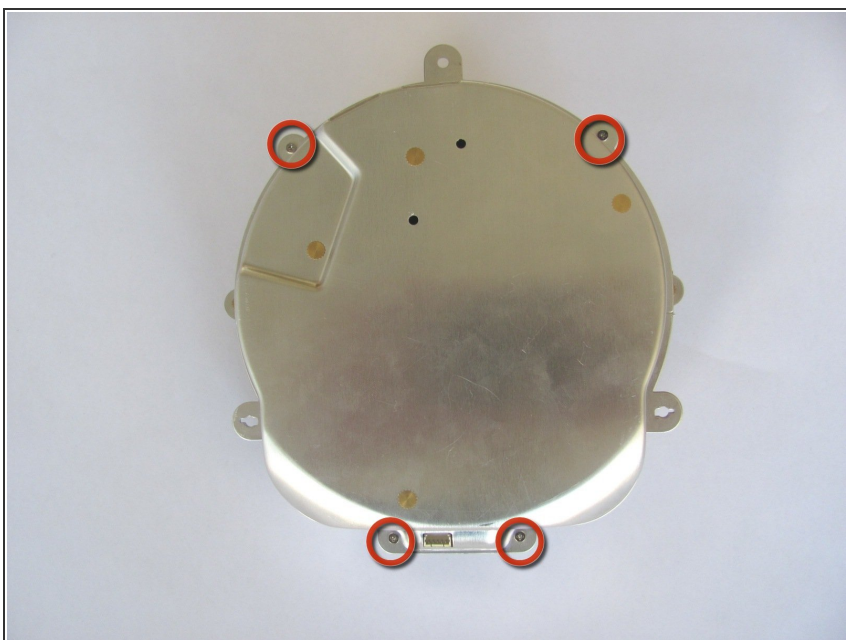
- Lift the bottom and top casing straight apart and then lift metal casing straight up from the bottom plastic casing.

Step 4



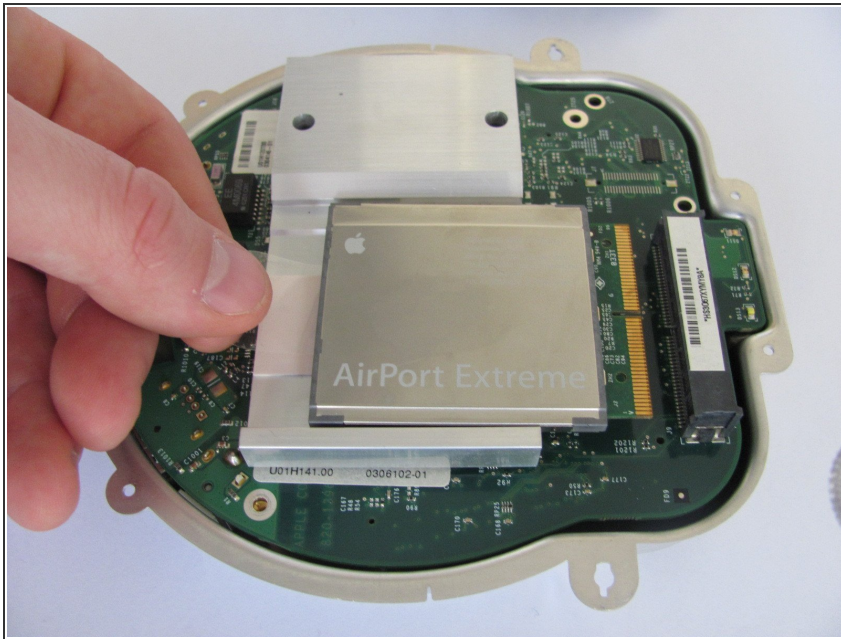
- Unplug the black connector on the top of the metal casing by gently pulling horizontally.

Step 5 — Motherboard



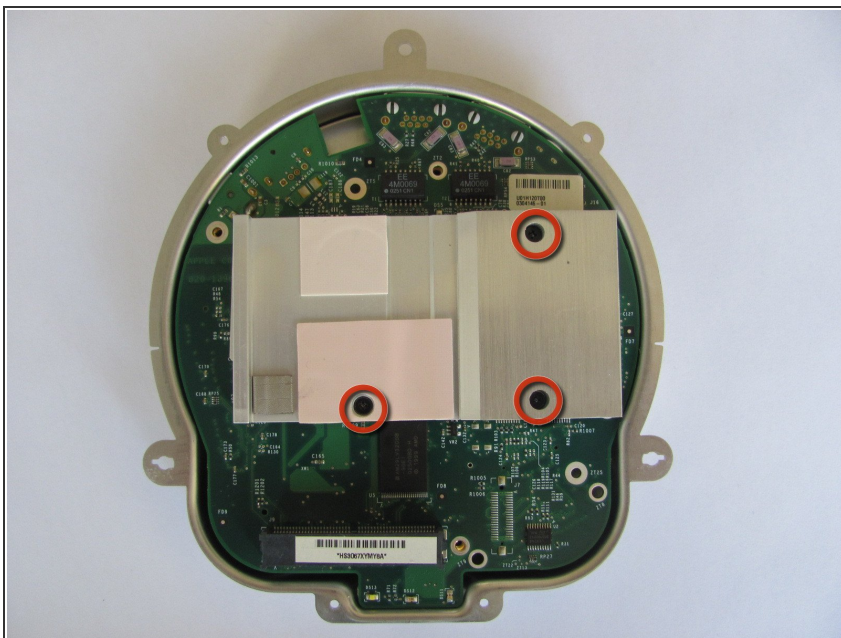
- Remove the four 4.3mm phillips screws from the bottom of the metal casing.

Step 6



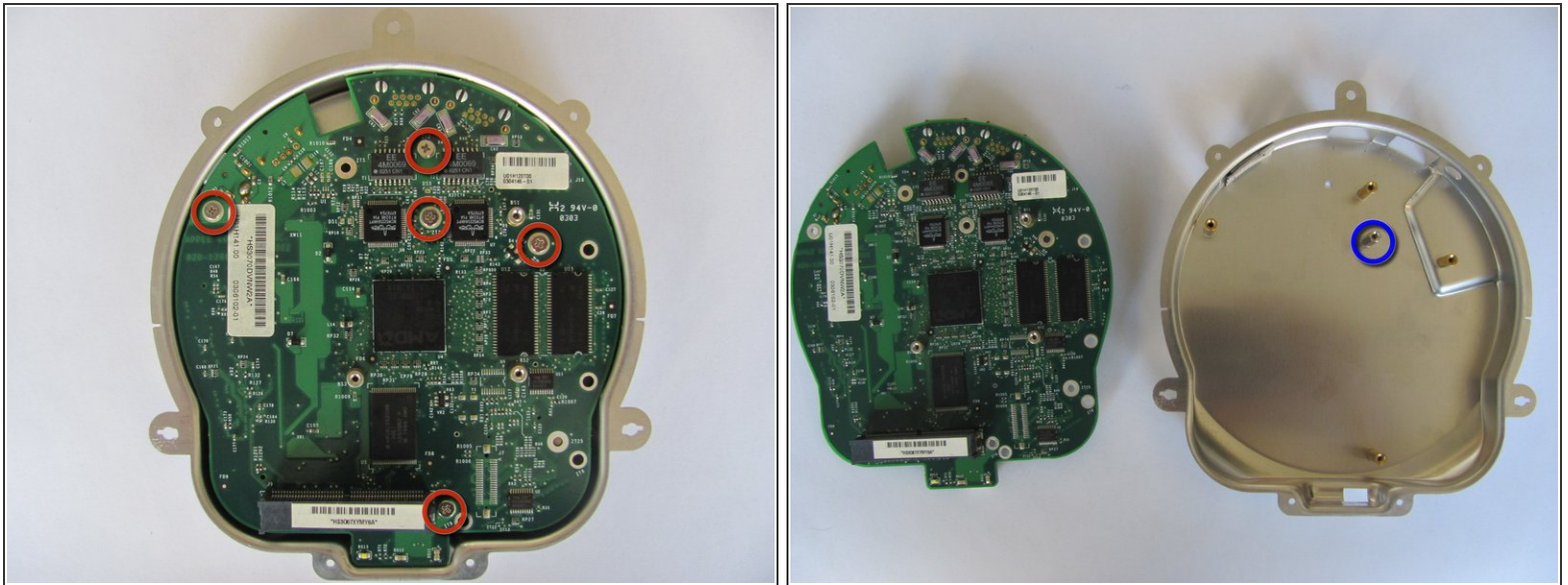
- Lift and separate the top and bottom of the metal casing. You will now expose the motherboard and the AirPort card.
- To remove the AirPort card, gently pull the plastic tab horizontally.

Step 7



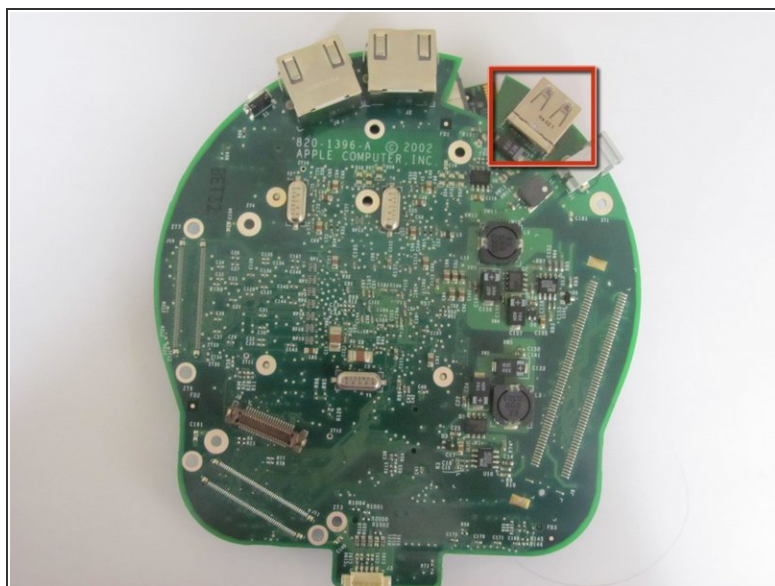
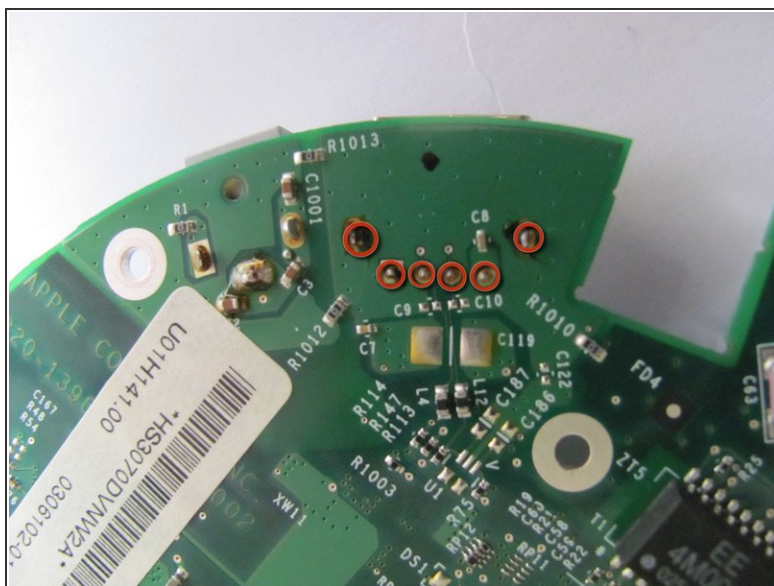
- Locate and remove the three 5.0mm phillips screws from the heat sink.
- Lift to remove the heat sink from the motherboard.

Step 8



- Locate and remove the five 7.5mm phillips screws from the motherboard.
 - Lift and separate the motherboard from the bottom metal casing.
- ⚠ There will be a loose hexagonal female screw extender under the motherboard.

Step 9 — USB Port



- Desolder the six connections located under the USB.
- Refer to [How To Solder and Desolder Connections](#) for soldering techniques.

To reassemble your device, follow these instructions in reverse order.