



Apple AirPort Extreme Model A1143 Logic Board Replacement

This guide will show how to replace and remove the logic board. Removing the logic board is also a requirement for several other repairs.

Written By: Zak



This document was generated on 2019-09-20 01:16:42 PM (MST).

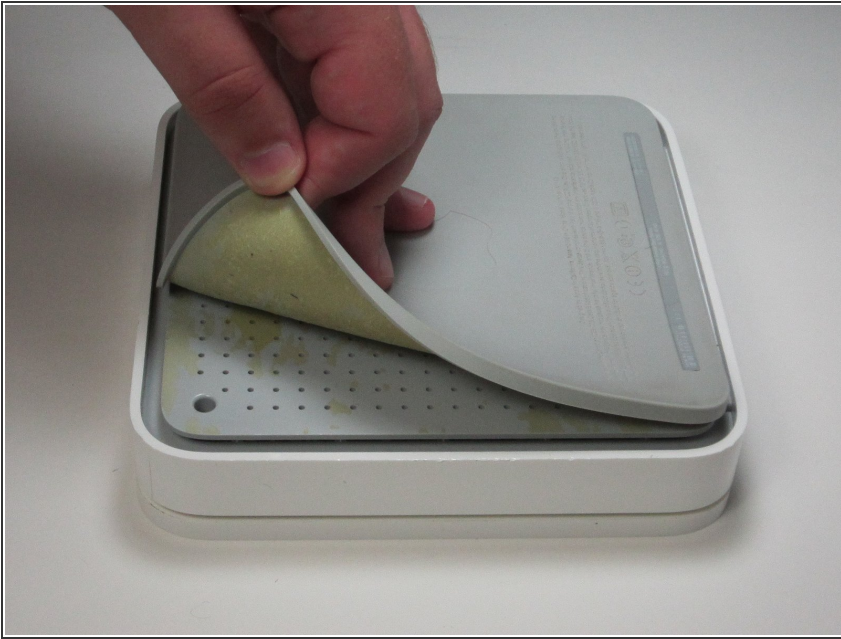
INTRODUCTION


This is another guide that will be used for several repairs. The logic board is the most frequently replaced part for this device as individual parts are hard to come by.

TOOLS:

- [Phillips #00 Screwdriver](#) (1)
 - [iFixit Opening Tools](#) (1)
-

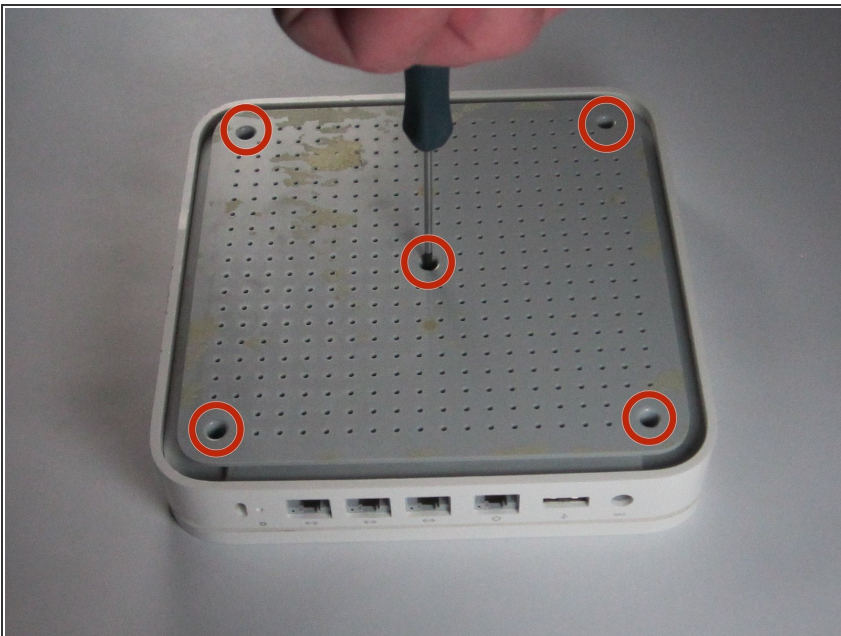
Step 1 — Back Pad



 The back pad is held in with glue so use caution when removing to prevent tearing. Low heat may be used to help remove the pad.

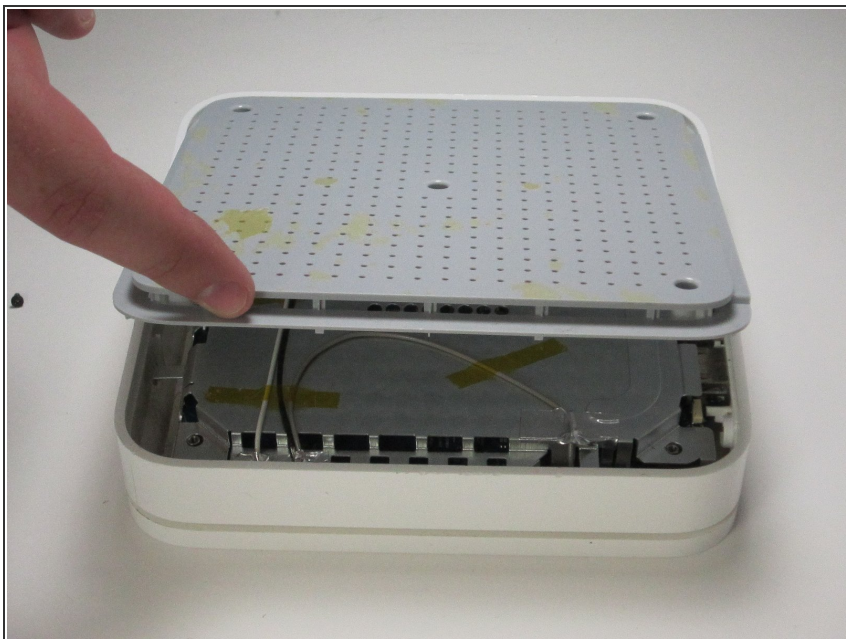
- Slowly peel off the rubber pad on the bottom of the device. Start from one corner and peel with your fingers. Use heat if necessary until pad is completely removed.

Step 2 — Back Cover



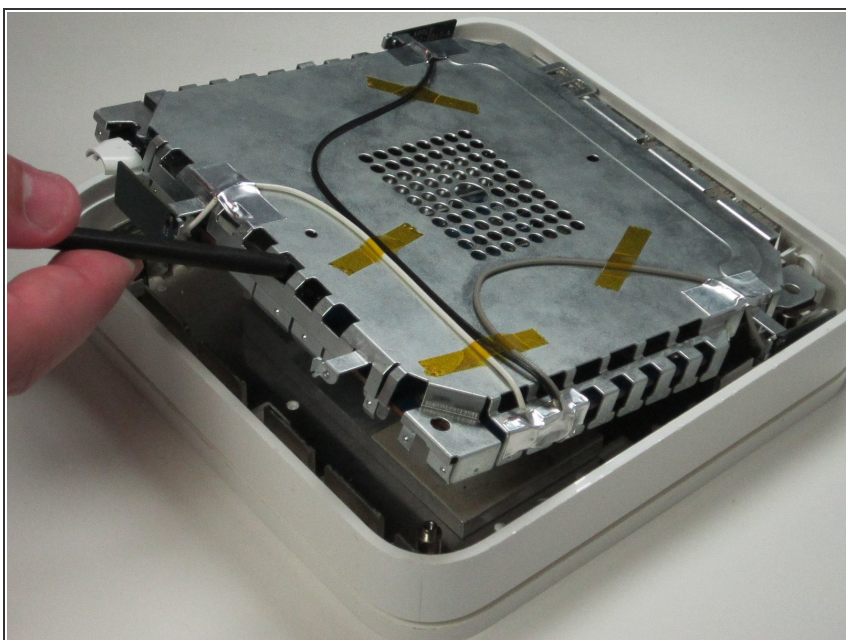
- After removing the rubber pad, unscrew the five 5mm phillips #00 screws in the holes of the back cover.

Step 3



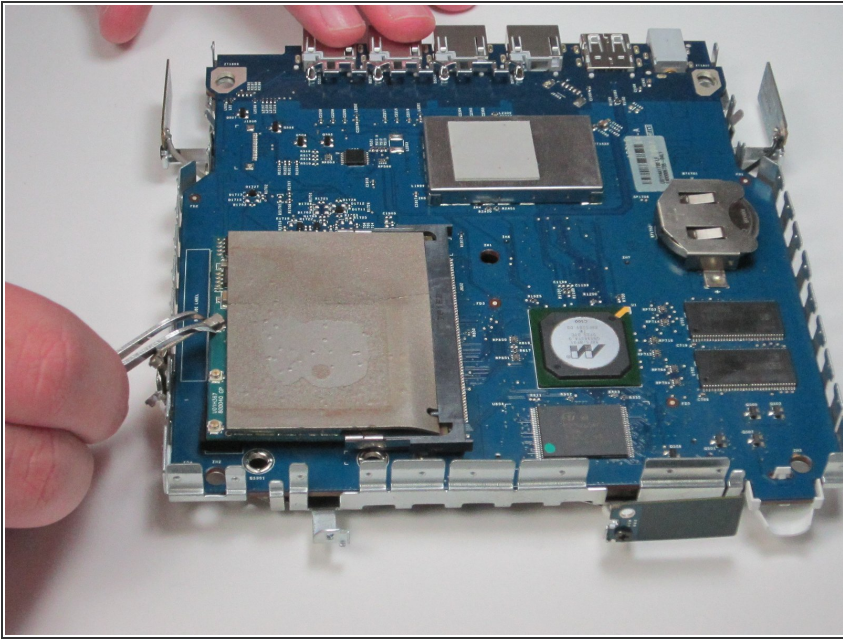
- Lift up the back case from the perforated edge to remove it.

Step 4 — Remove from Case



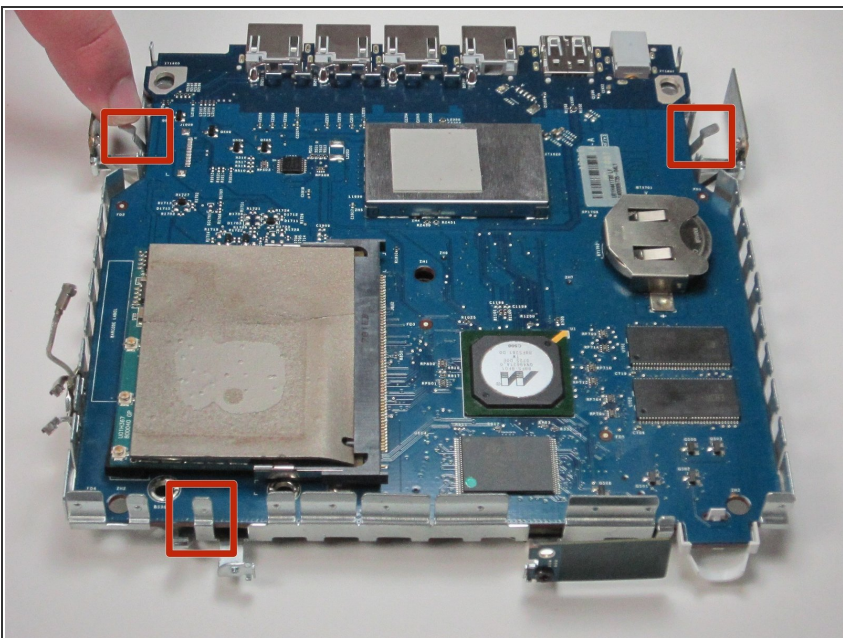
- Remove logic board and metal casing from outer case by prying from one side using a spudger.

Step 5 — Detach Logic Board From Case



- Unhook the wires connecting the logic board to the metal casing by grabbing and pulling up on each connection with tweezers.

Step 6 — Pull Back Tabs



- Carefully push back the three metal tabs with your fingers on the sides of metal case.

Step 7 — Remove Metal case



- Carefully pull the metal case away from the logic board.

To reassemble your device, follow these instructions in reverse order.