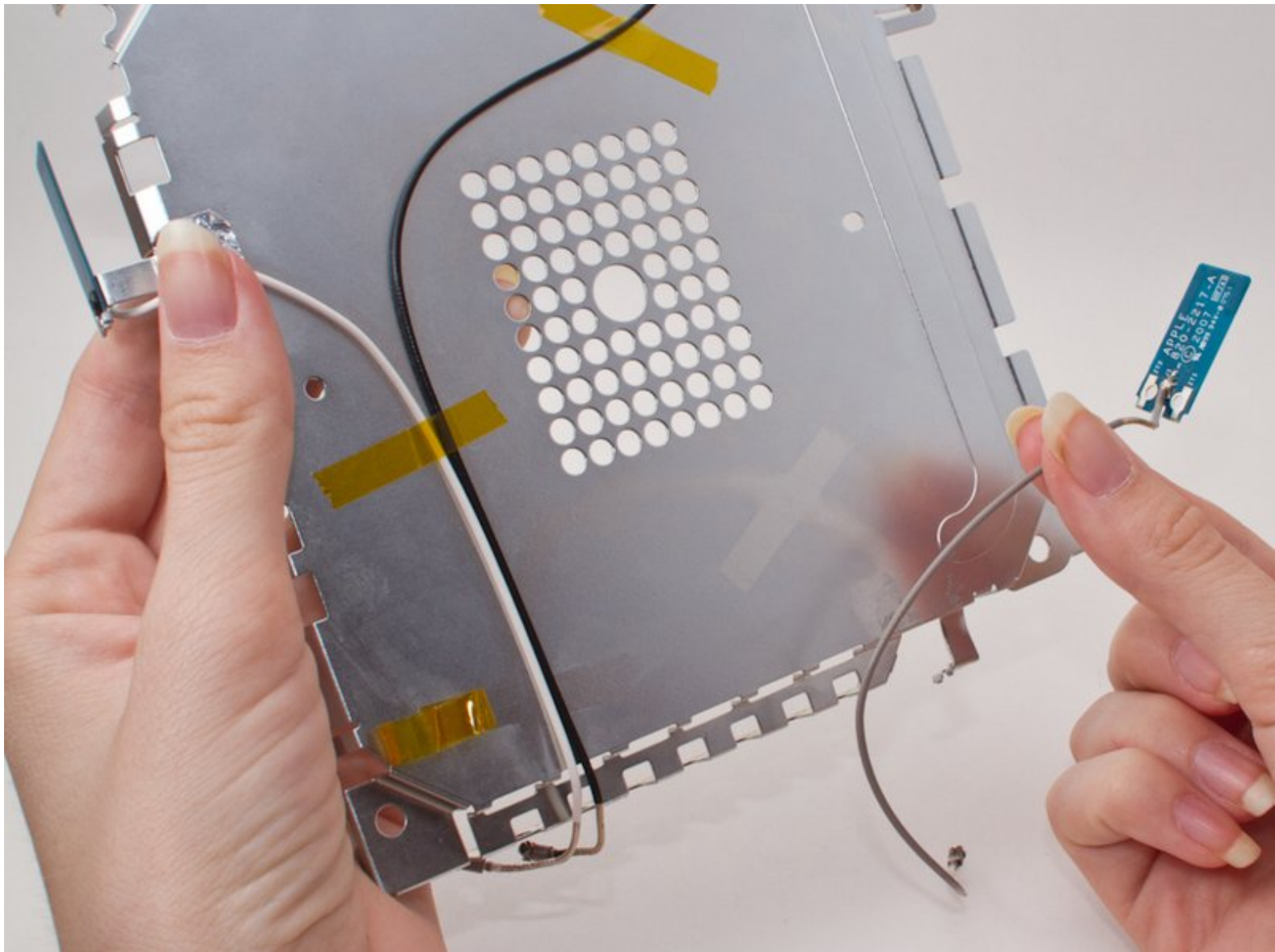




# Apple AirPort Extreme Model A1354 Antenna Replacement

This guide explains how to access and remove an antenna so that it can be replaced.

Written By: Brandon



---

## INTRODUCTION

If the base station is sending out a poor signal, an antenna may need to be replaced.



### TOOLS:

- [Phillips #00 Screwdriver](#) (1)
  - [iFixit Opening Tools](#) (1)
-

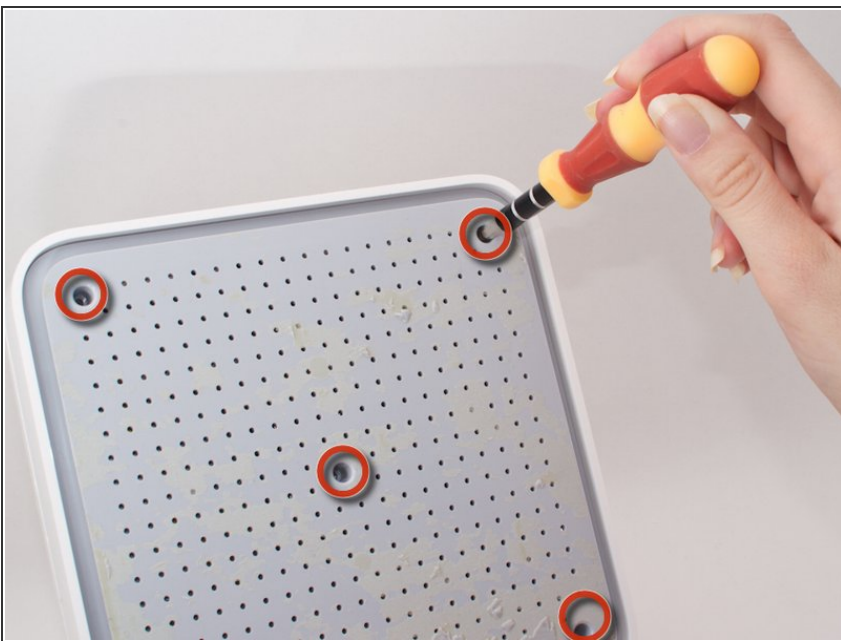
## Step 1 — Outer Case



- First start by peeling off the outer rubbery covering on the bottom of the device.

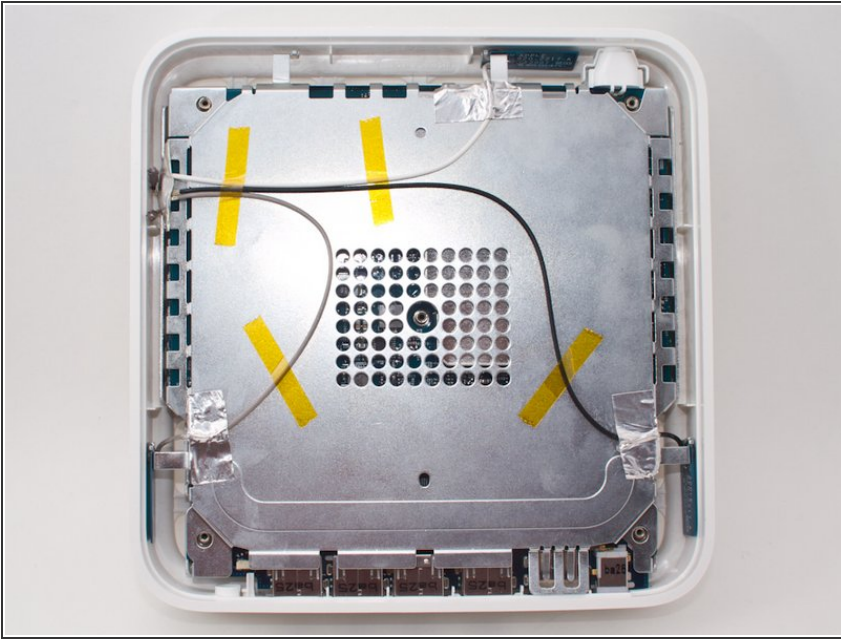
**⚠ CAUTION:** This part is very fragile, so it is recommended that a blow dryer is used on the covering to heat it up. Simply blow dry the covering while slowly peeling it away, and the covering will not tear.

## Step 2



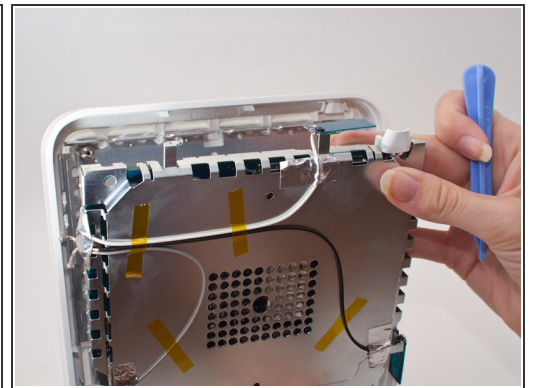
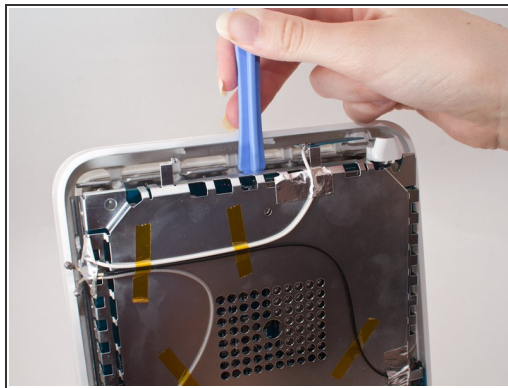
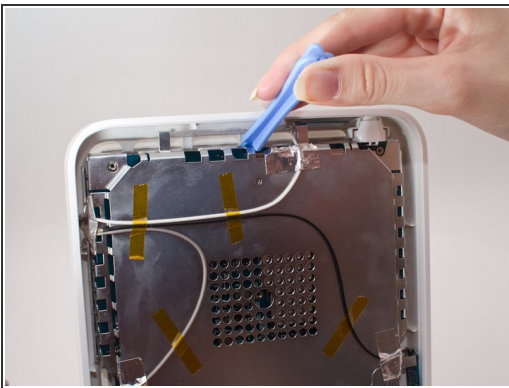
- After removing the rubber covering, unscrew the five 4.9mm Phillips screws in the holes of the plastic casing.

### Step 3



- After unscrewing all five screws, remove the plastic casing. The back should now look like the picture shown.

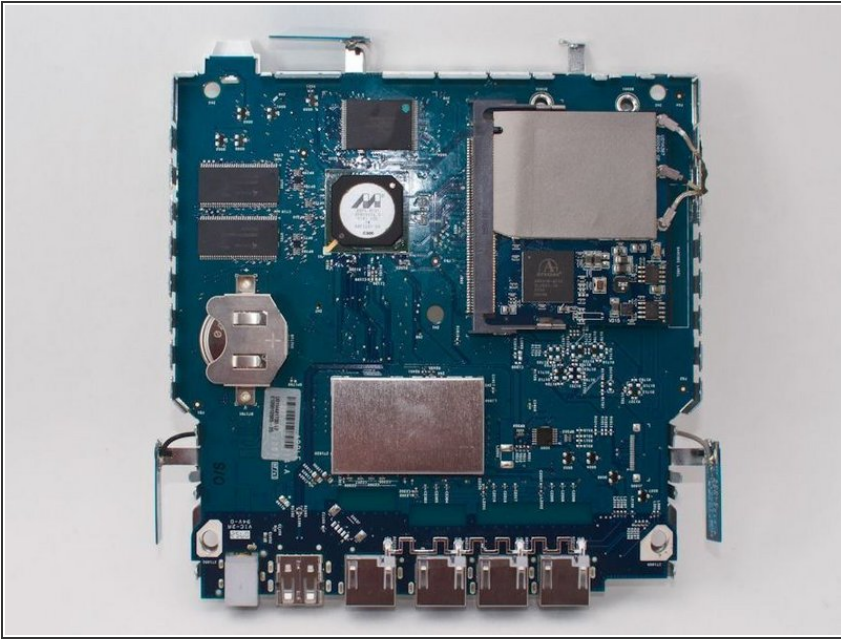
### Step 4



- The inner metal casing is latched inside the outer white plastic shell, so insert a pry tool underneath the metal casing and pry it apart from the shell.
- It should make a click when it comes apart.

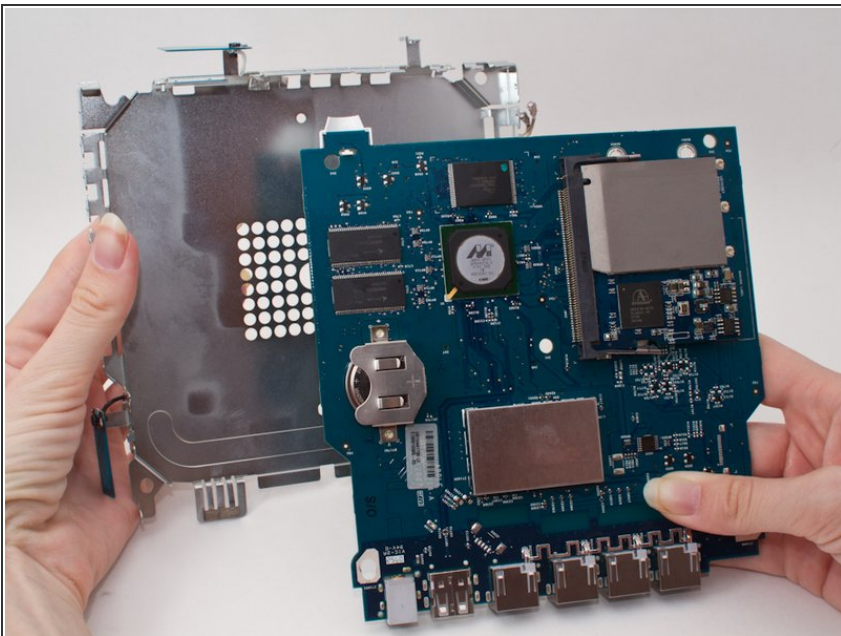


## Step 5



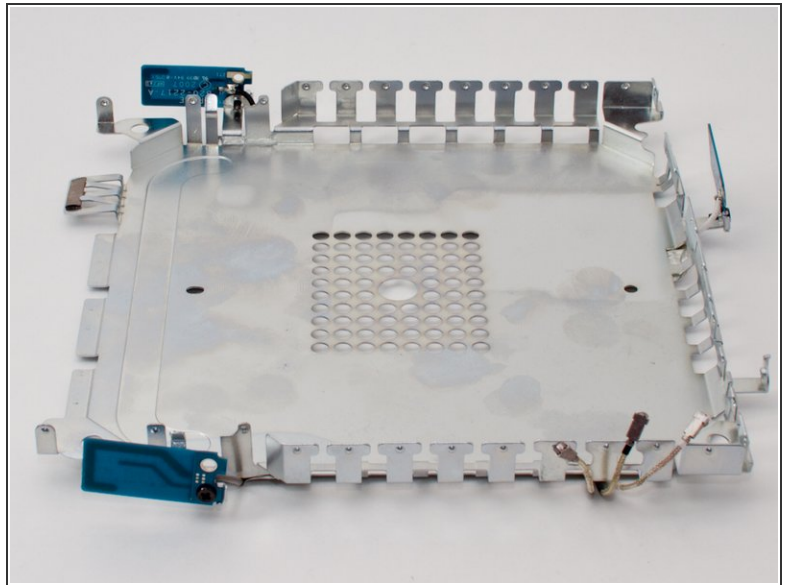
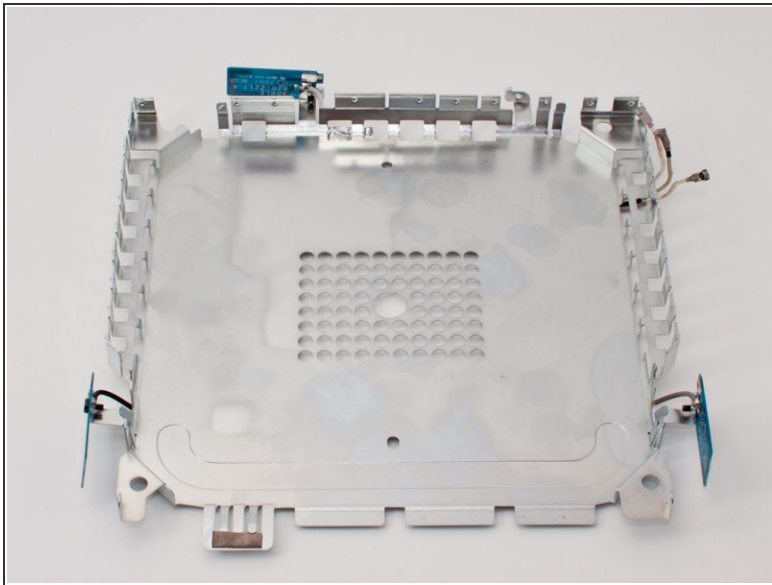
- Remove the outer casing.
- The exposed logic board should look like this.

## Step 6 — Antenna



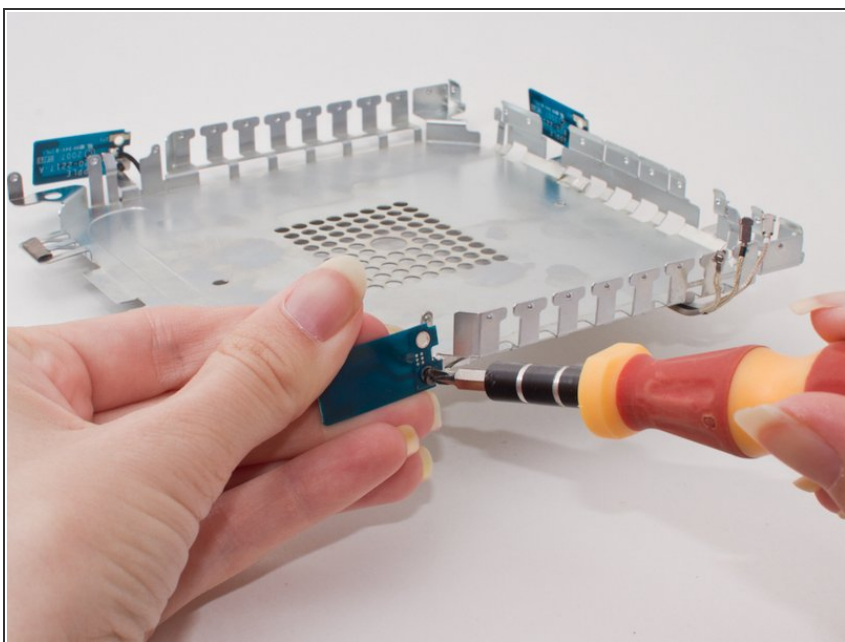
- Remove the metal casing by gently prying the logic board away with your hands.
- This should be pretty easy, you already removed the screws holding these pieces together.

## Step 7



- Turn the device so that the antenna to be replaced is facing you.

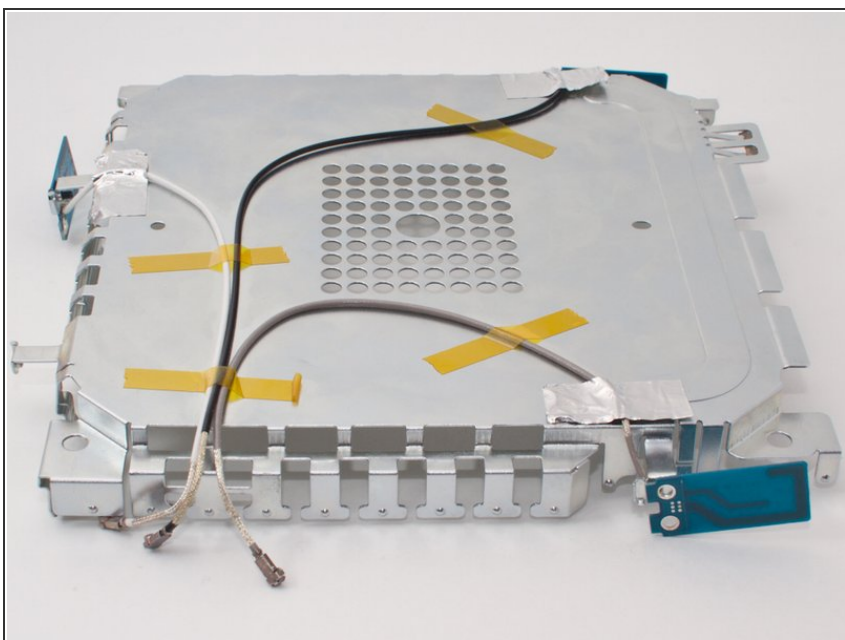
## Step 8



**⚠ Caution:** Be careful not to bend the metal strip that the antenna is attached to. This may cause problems during reassembly and use.

- Using the screwdriver, unscrew the 2.5mm Phillips screw on the antenna.

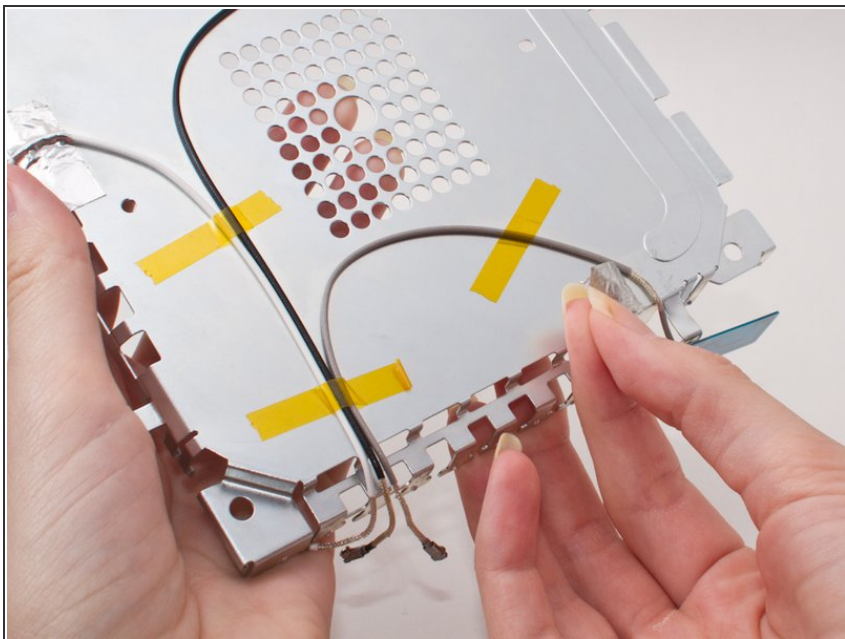
## Step 9



- Turn the device over so that the antenna with the screw removed is still facing you.

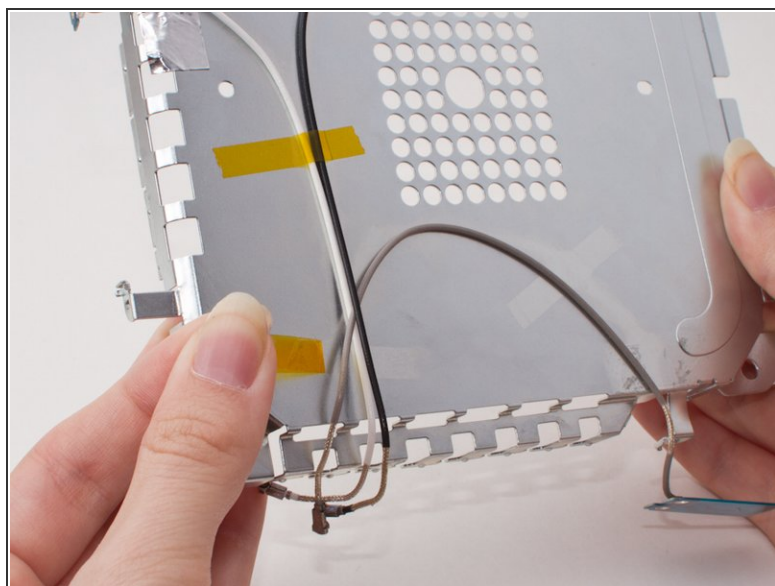
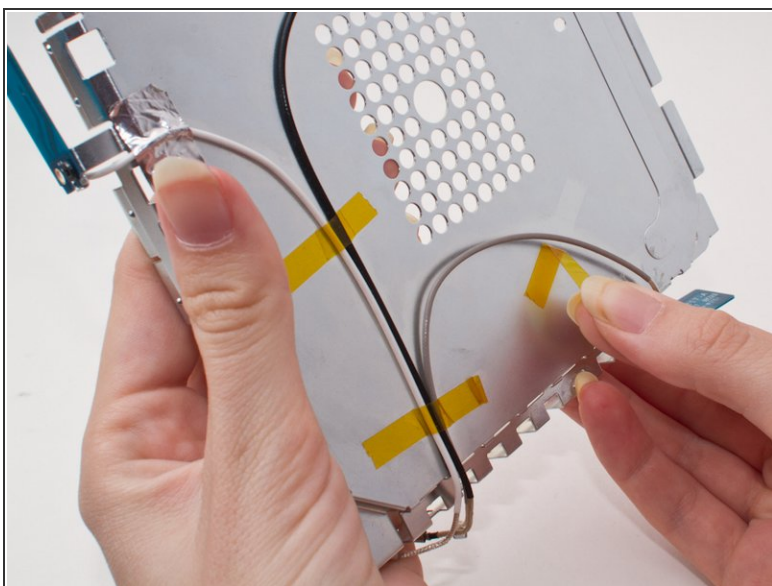


## Step 10



- Carefully peel back the metallic silver tape covering the cable of the antenna to be removed.

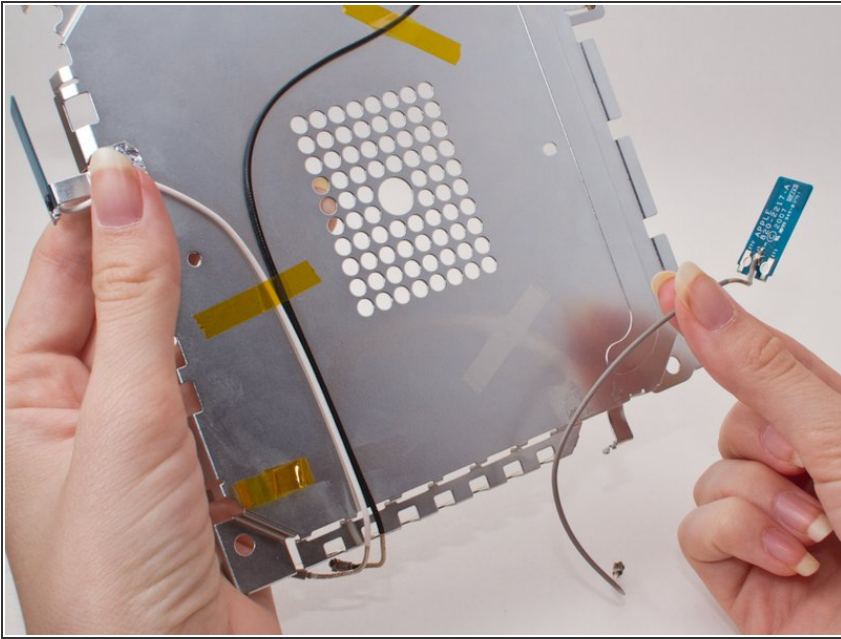
## Step 11



- Carefully peel back the clear yellow tape covering the cable of the antenna to be removed.



## Step 12



- Remove the antenna.

To reassemble your device, follow these instructions in reverse order.