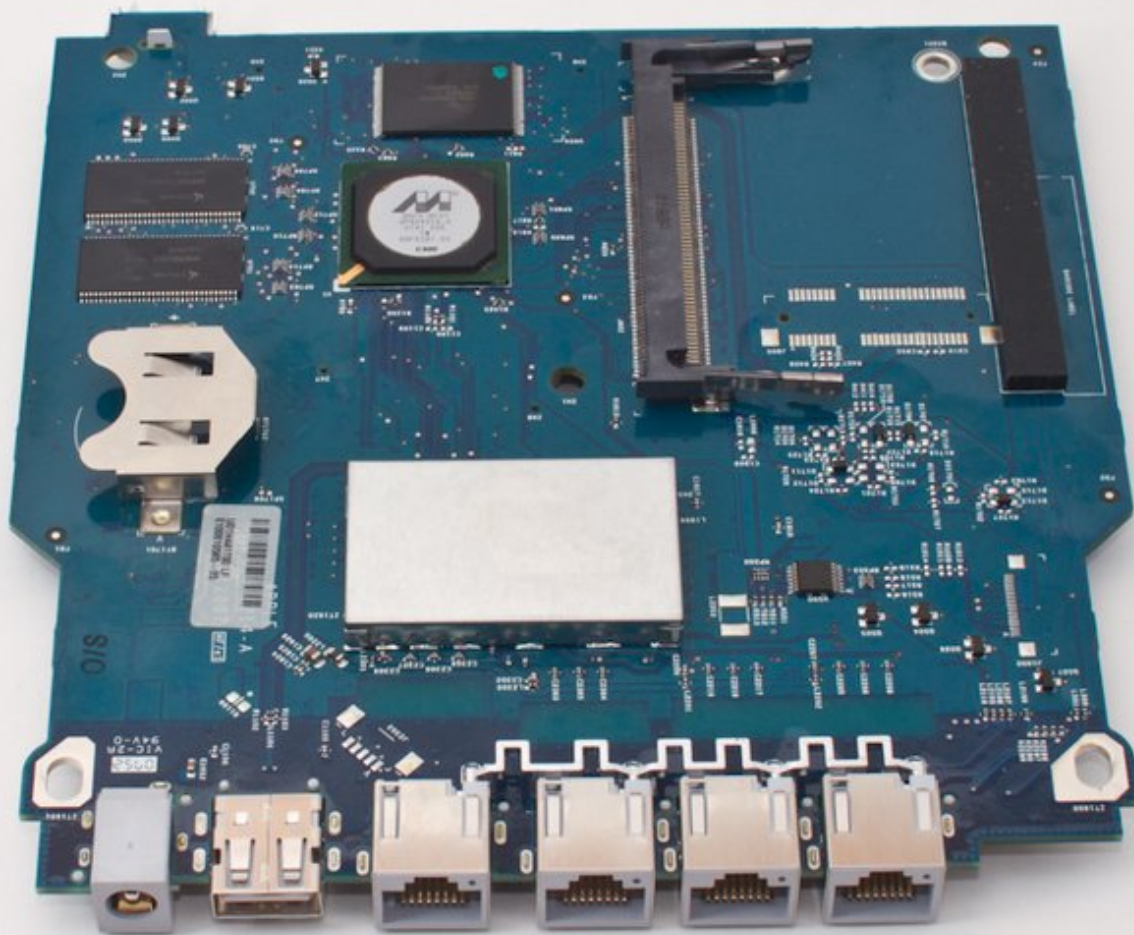




# Apple AirPort Extreme Model A1354 Logic Board Replacement

This guide will show how to replace the logic board.

Written By: Brandon



---

## INTRODUCTION

If all other troubleshooting options fail, you may need to replace the logic board.



### TOOLS:

- [Phillips #00 Screwdriver](#) (1)
  - [iFixit Opening Tools](#) (1)
-

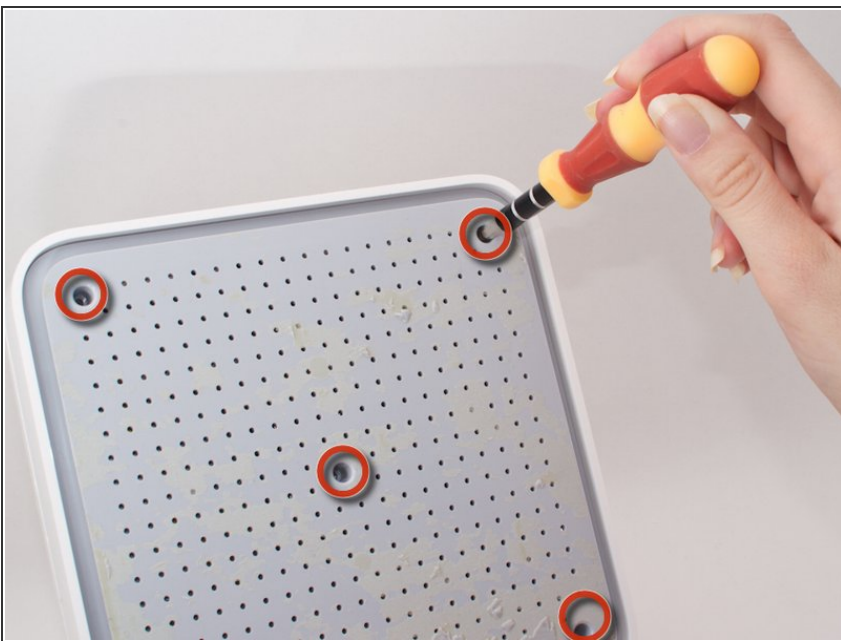
## Step 1 — Outer Case



- First start by peeling off the outer rubbery covering on the bottom of the device.

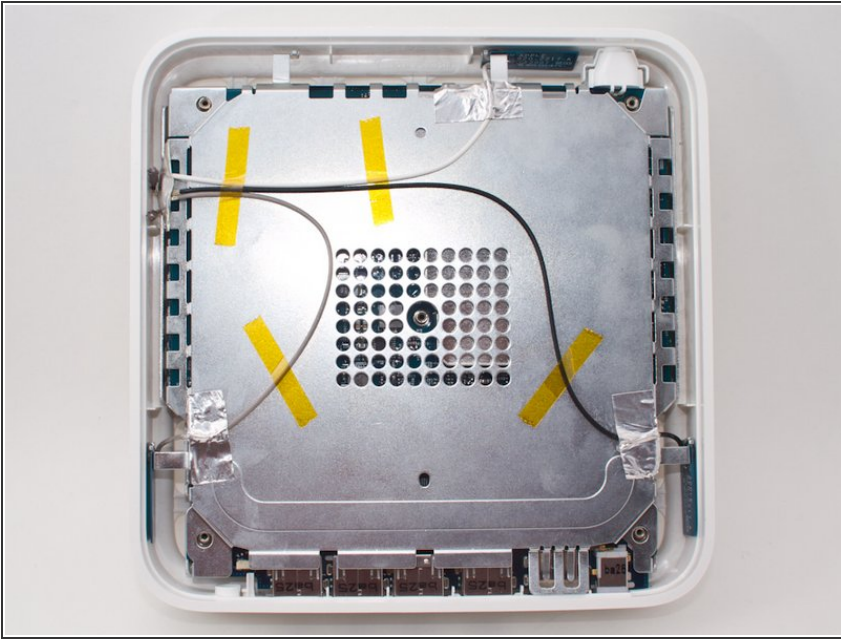
**⚠ CAUTION:** This part is very fragile, so it is recommended that a blow dryer is used on the covering to heat it up. Simply blow dry the covering while slowly peeling it away, and the covering will not tear.

## Step 2



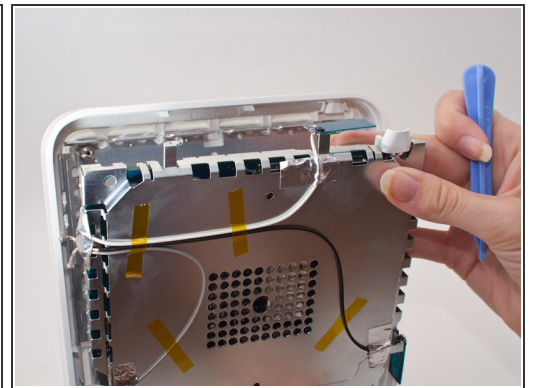
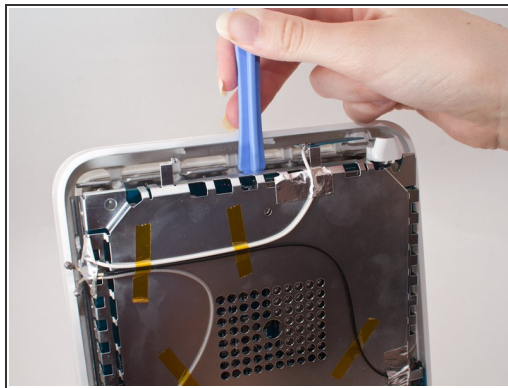
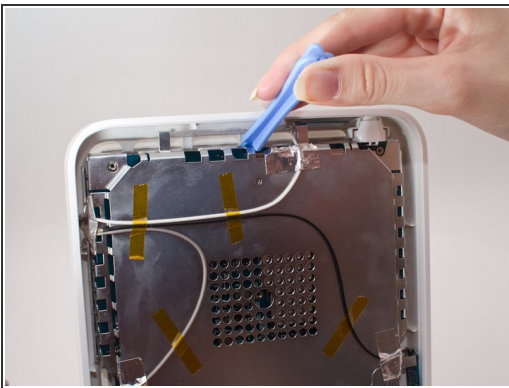
- After removing the rubber covering, unscrew the five 4.9mm Phillips screws in the holes of the plastic casing.

### Step 3



- After unscrewing all five screws, remove the plastic casing. The back should now look like the picture shown.

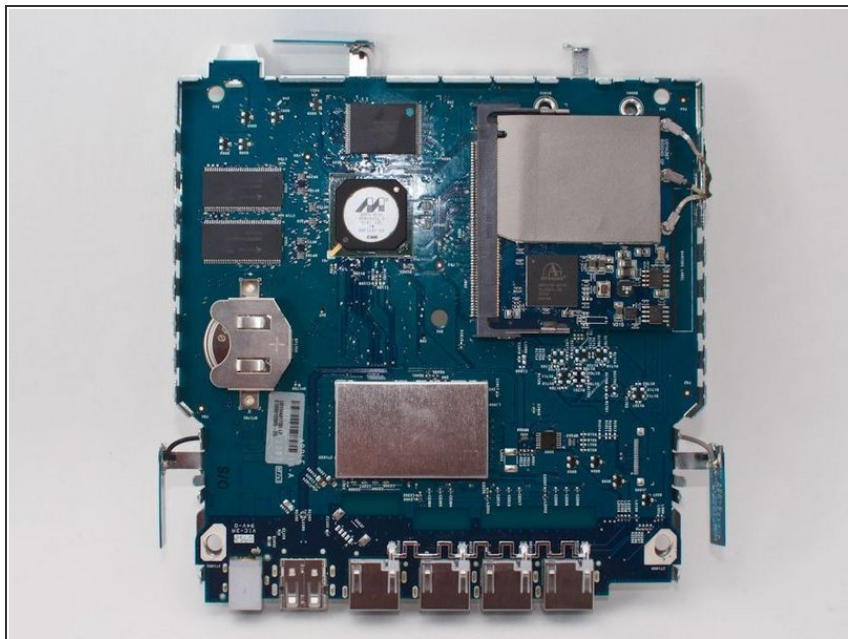
### Step 4



- The inner metal casing is latched inside the outer white plastic shell, so insert a pry tool underneath the metal casing and pry it apart from the shell.
- It should make a click when it comes apart.

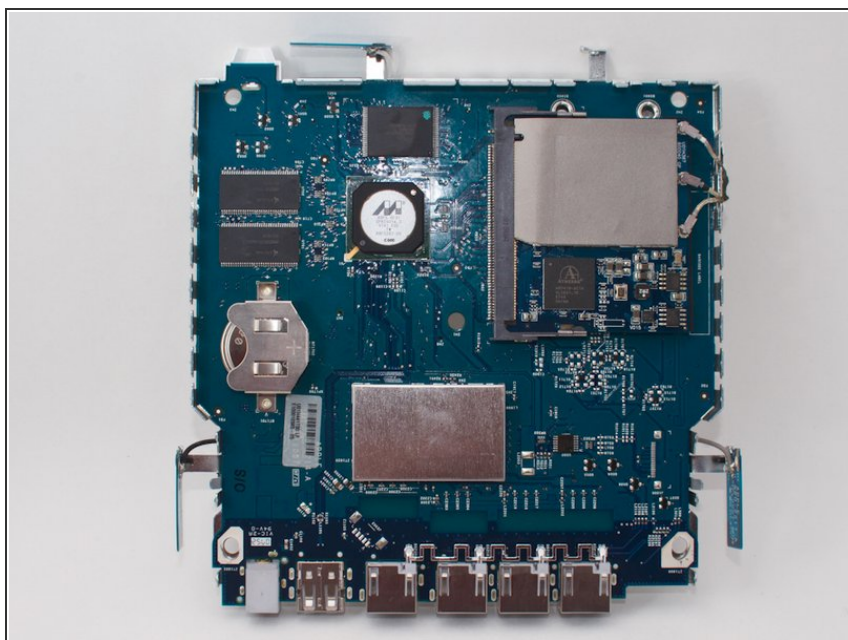


## Step 5



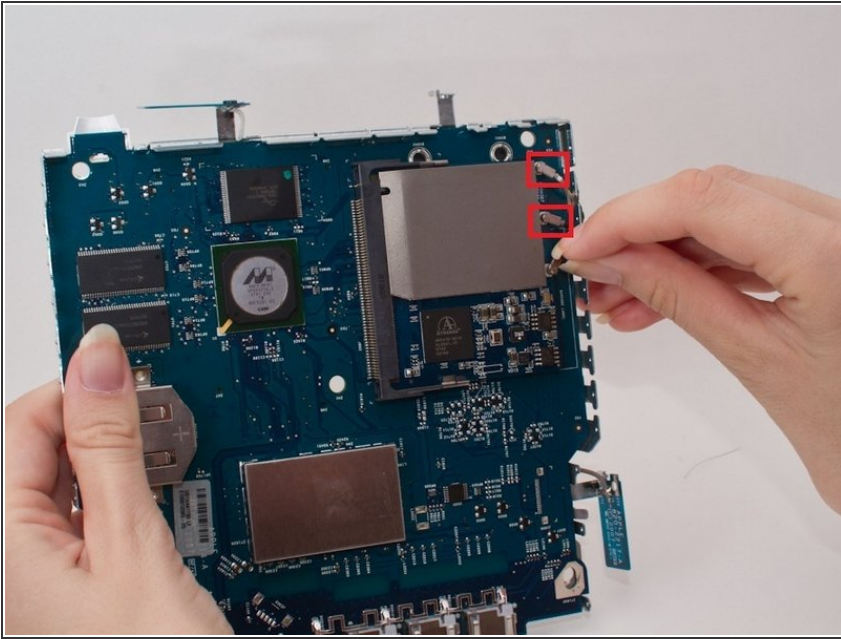
- Remove the outer casing.
- The exposed logic board should look like this.

## Step 6 — WiFi Card



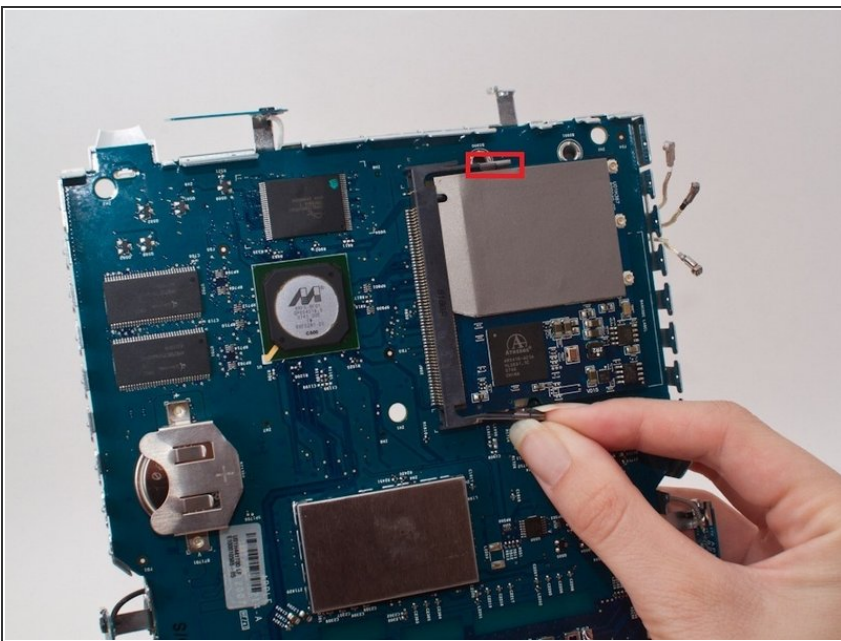
- Take the device out of the casing and orient it so that you can see the WiFi card.

## Step 7



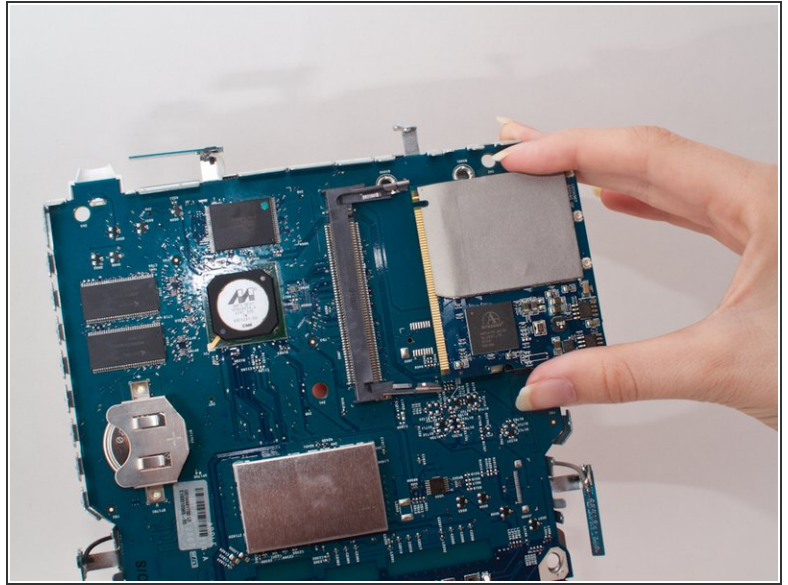
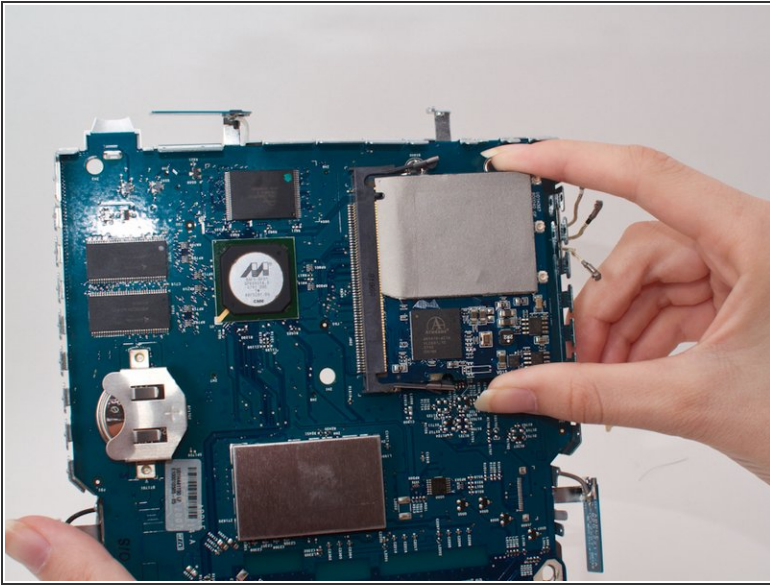
- Wires come from the three antennas and connect on the outer edge of the WiFi card.
- Carefully pull up on the end of one of the wires to disconnect it from the motherboard.
- Do this for the remaining two wires.

## Step 8



- There are two clips attached to the upper and lower ends of the WiFi card
- ⚠ CAUTION: For the following step, do not pull the clip after you have detached it. The clip is fragile and too much force may cause the clip to break.
- Grab the end of one of the clips and pull away from the WiFi card. This should make the clip visibly detached from the WiFi card.
  - Do the same for the other clip.

## Step 9



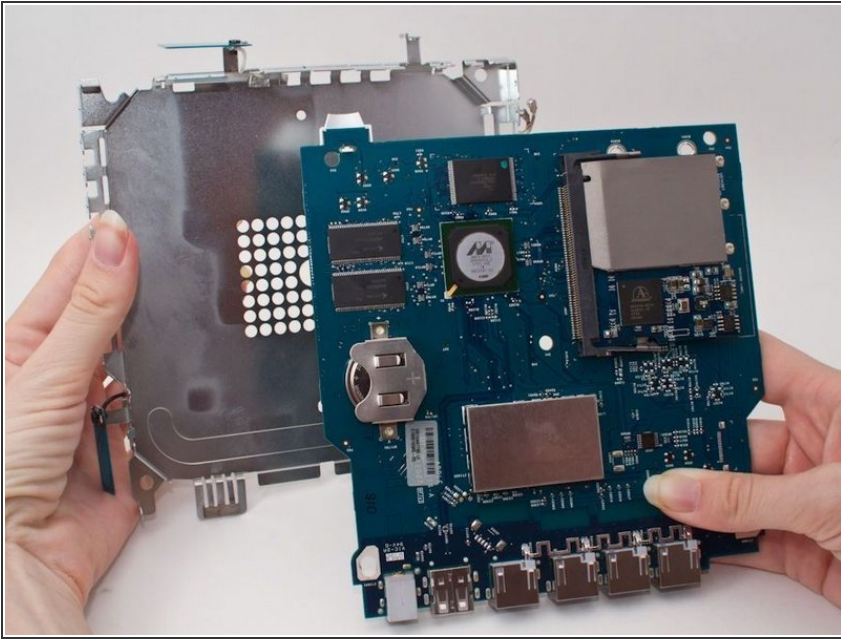
- Grasp the upper and lower ends of the WiFi card.
- Carefully pull the WiFi card to the right.

**⚠ CAUTION:** Do not pull UP (towards yourself) on the WiFi card when removing. The card is on a track that only allows it to move left and right. Forcing the card to move in other directions may result in breaking the track.

- Completely remove the WiFi card.

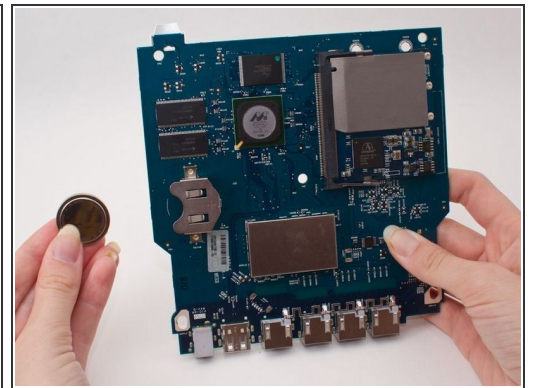
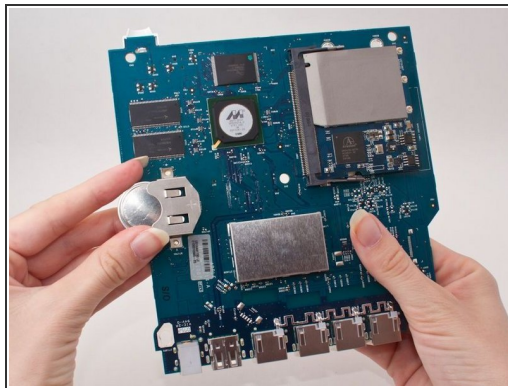
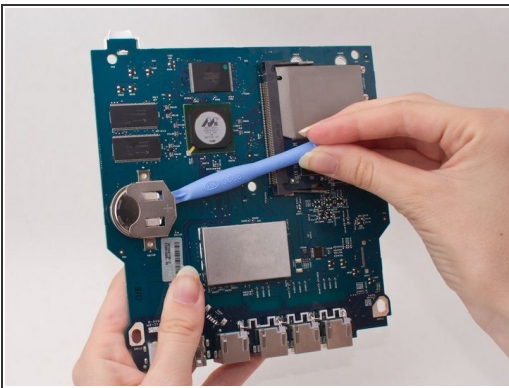


## Step 10 — Battery



- Remove the metal casing by gently prying the logic board away with your hands.
- This should be pretty easy, you already removed the screws holding these pieces together.

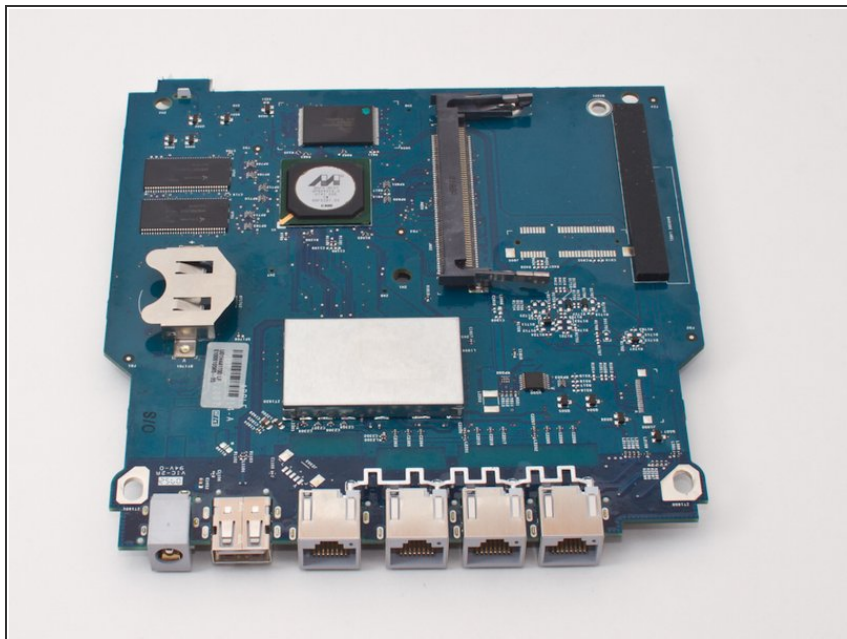
## Step 11



- Remove the battery by gently "shoving" it out with the plastic tool.



## Step 12 — Logic Board



- This is the "naked" logic board. You can order a new one and replace it by following the above steps in reverse order.

To reassemble your device, follow these instructions in reverse order.