



Apple Cinema Display M8149 LCD Screen Replacement

Replacing the LCD screen on an Apple Cinema Display M8149.

Written By: Curtis Musashi



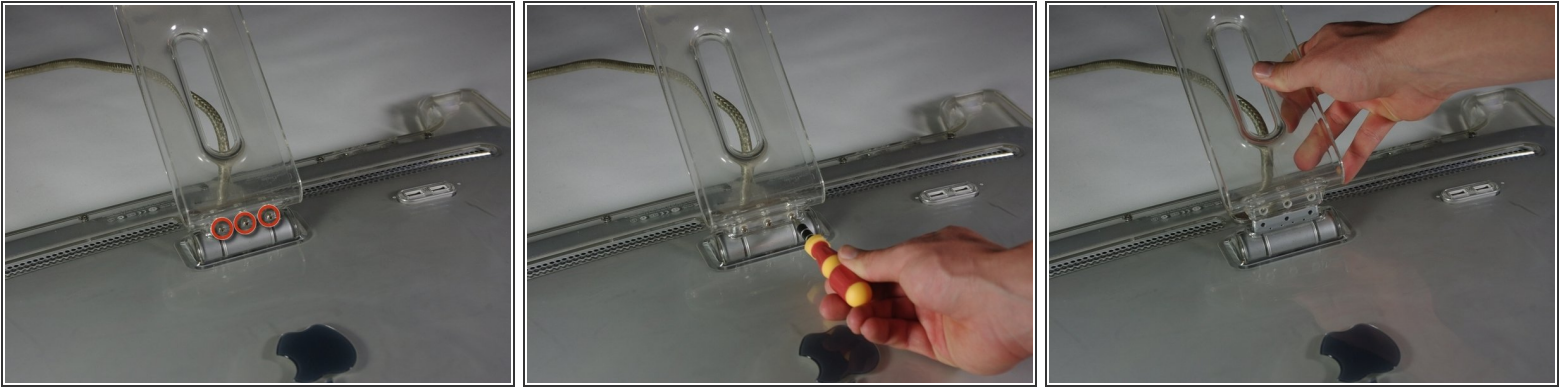
INTRODUCTION

This guide shows the reader how to disassemble the Apple Cinema Display M8149 so that the screen can be replaced. The tools required for this section are the spudger and the PH 2 screwdriver.

TOOLS:

- [Phillips #2 Screwdriver](#) (1)
 - [Spudger](#) (1)
-

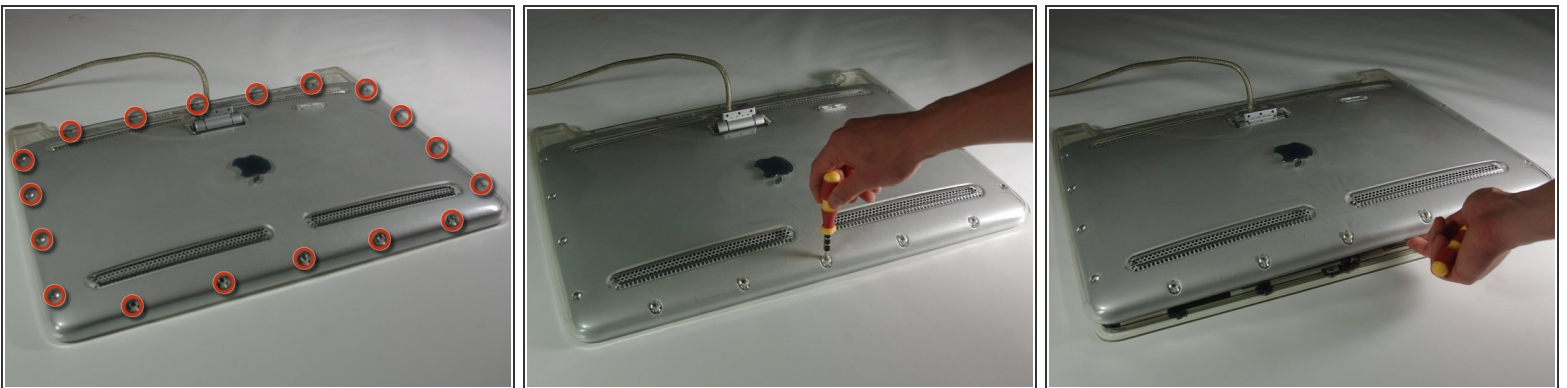
Step 1 — Accessing Control Boards



 Before starting, make sure the display is **UNPLUGGED**. Failure to do so can result in shock and serious injury.

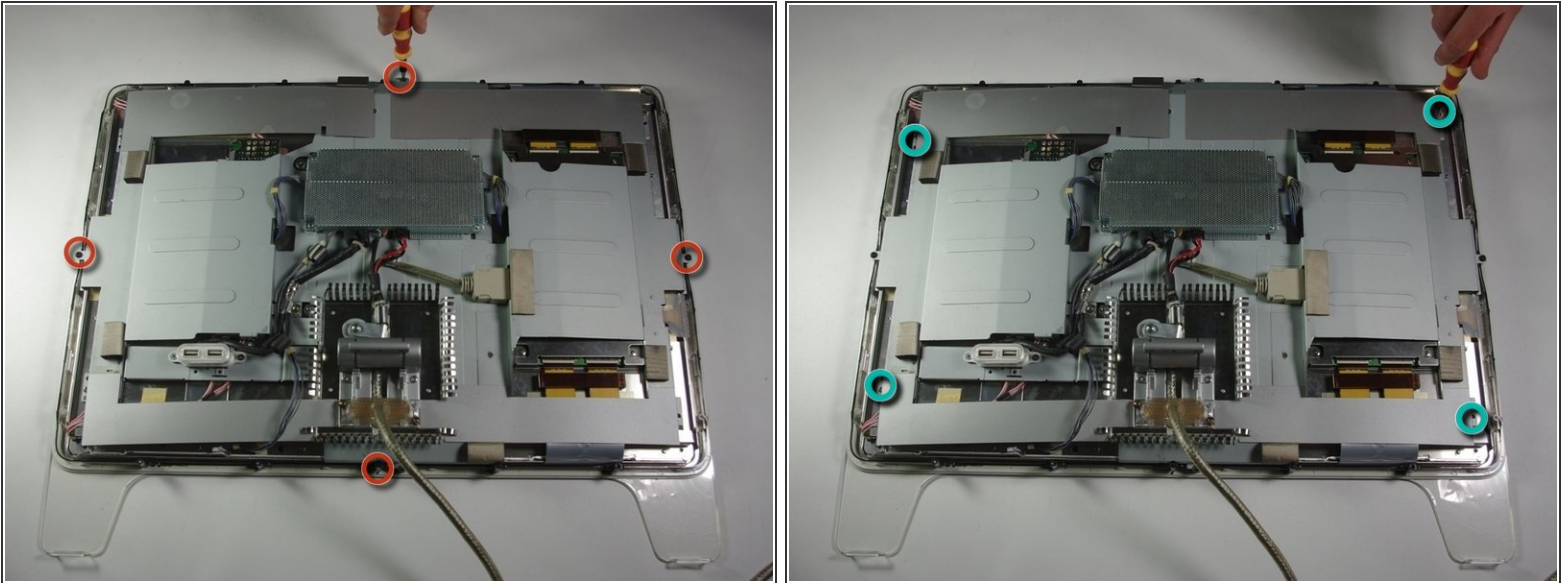
- Flip the Cinema Display so it is on its face and the feet are pointed away from you.
- Using the PH 2 screw driver, unscrew the three feet screws (9.52 x 4.43mm).
- Remove the back foot from the hinge mount by grabbing the foot and pulling upwards.

Step 2



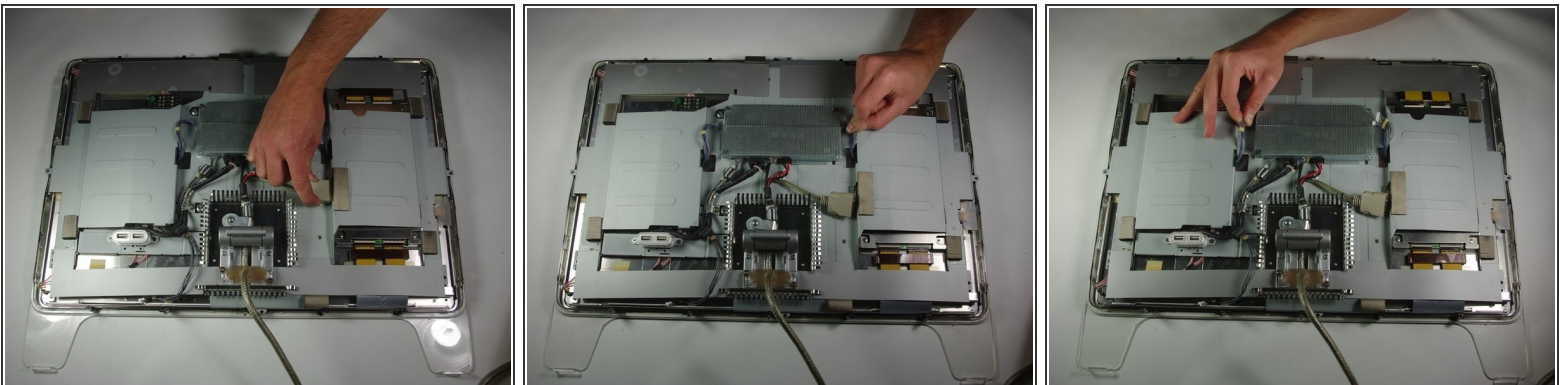
- Locate and remove the back plate screws (5.25 x 4.43 mm) using the PH 2 screw driver.
- Lift the back plate off of the display.
- Completely remove the back plate and set it aside.

Step 3



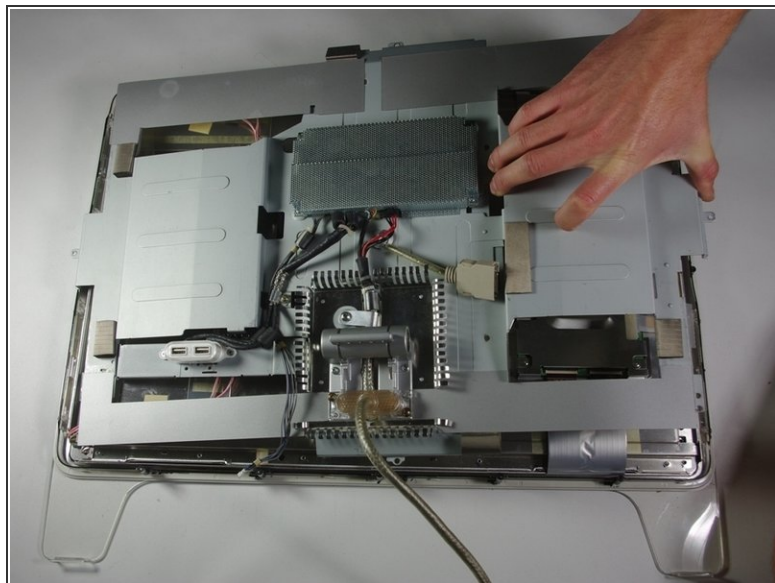
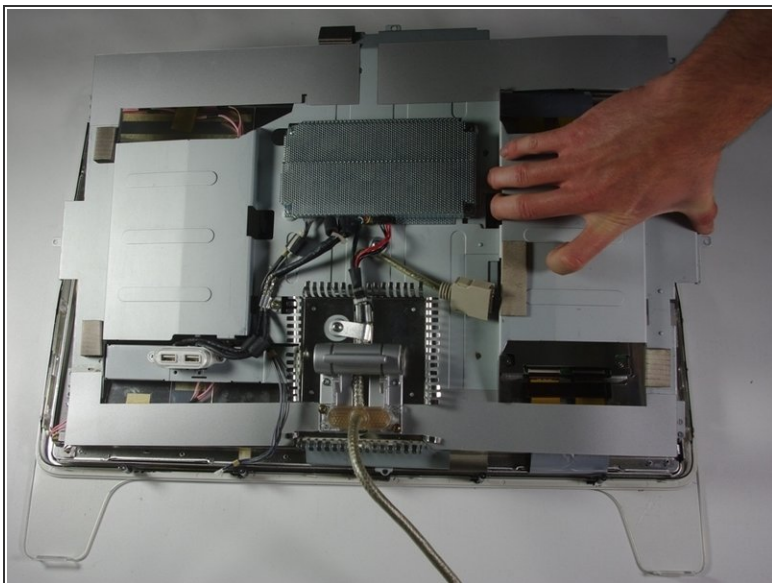
- With the PH 2 screw driver, remove the four rim screws (9.52 x 3.43 mm) located on the outer rim of the metal cover.
- Next, unscrew the four cover screws (11.91 x 2.89 mm) using the PH 2 screwdriver.

Step 4



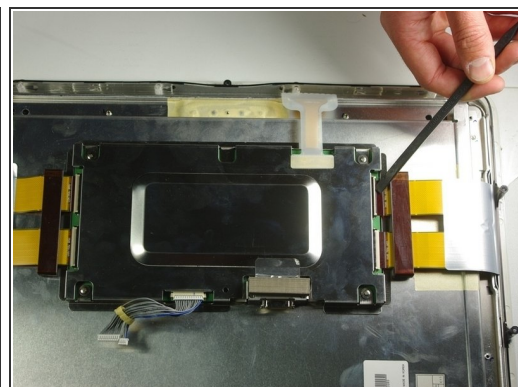
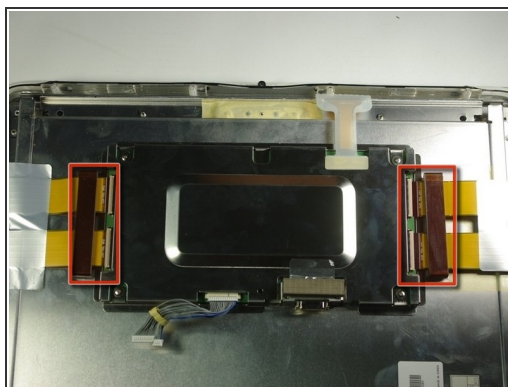
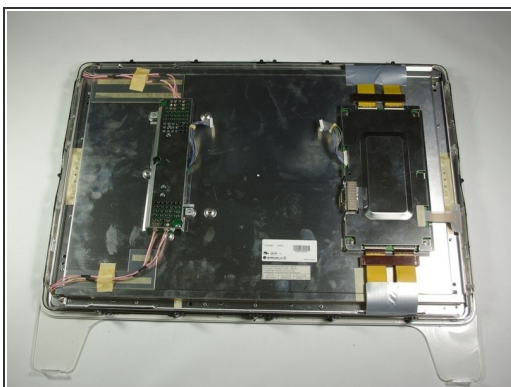
- Unplug the large plug that connects the control board to the rest of the display.
- Unplug the blue and gray plug on the right side of the control board.
- Unplug the blue and gray plug on the left side of the control board.

Step 5



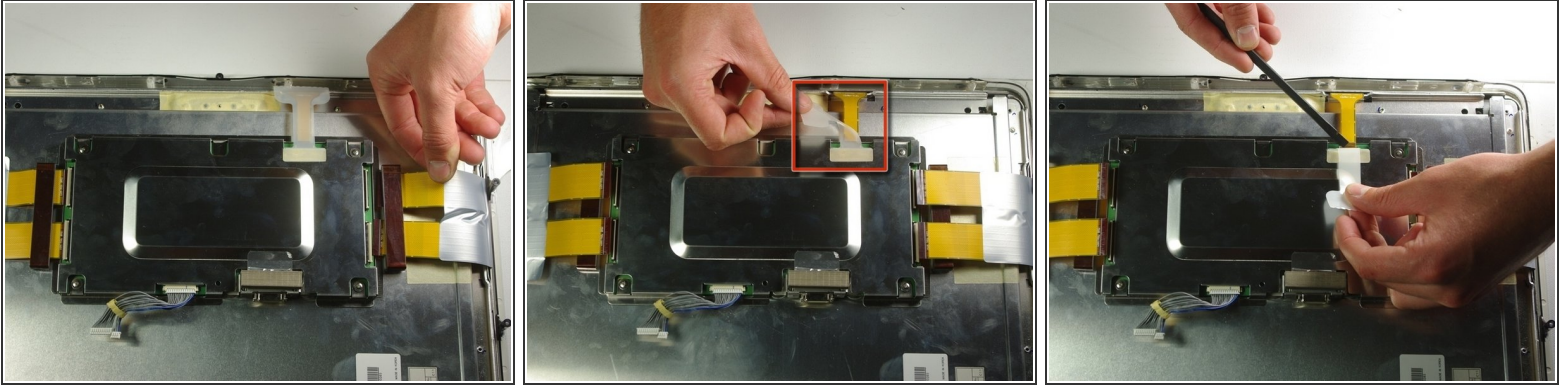
- Lift the large metal cover which spans across the whole display.

Step 6 — LCD Control Board



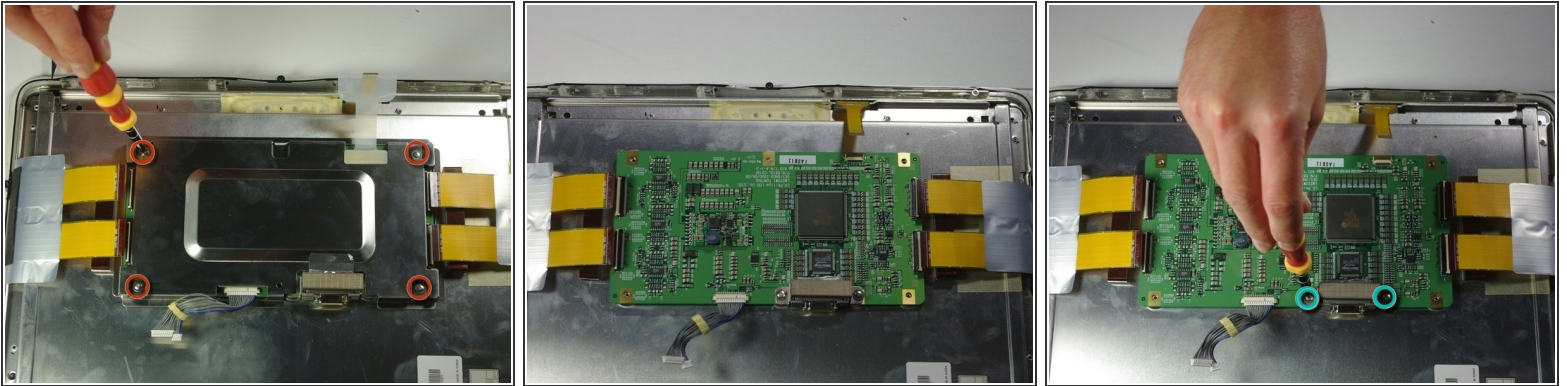
- Locate and carefully remove the two tape plugs on either side of the control board using the spudger.

Step 7



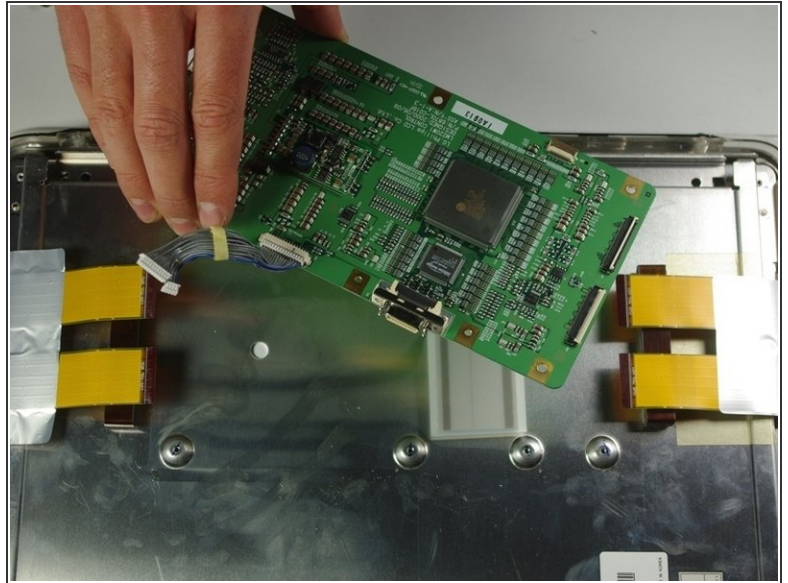
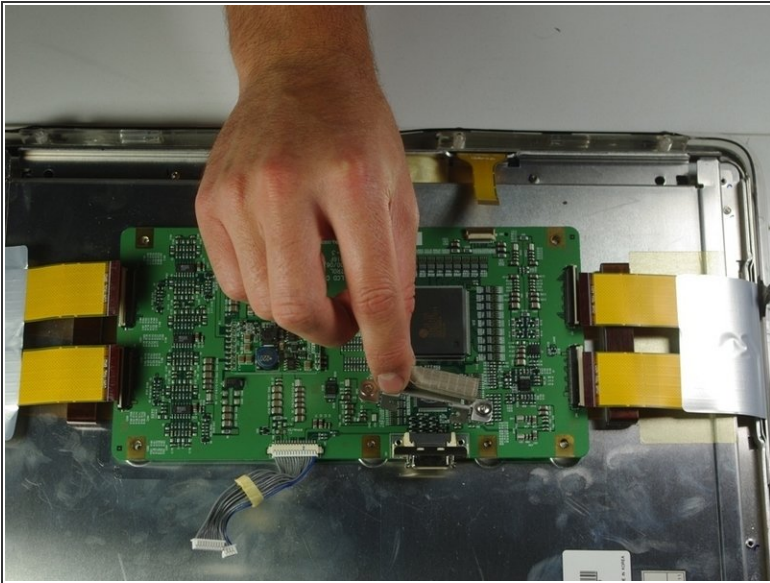
- Pull the previously removed tapes out from the metal box with your hand.
- Peel back the white plastic cover located on the tape plug.
- Unplug the tape plug on the right of the unit using the spudger.

Step 8



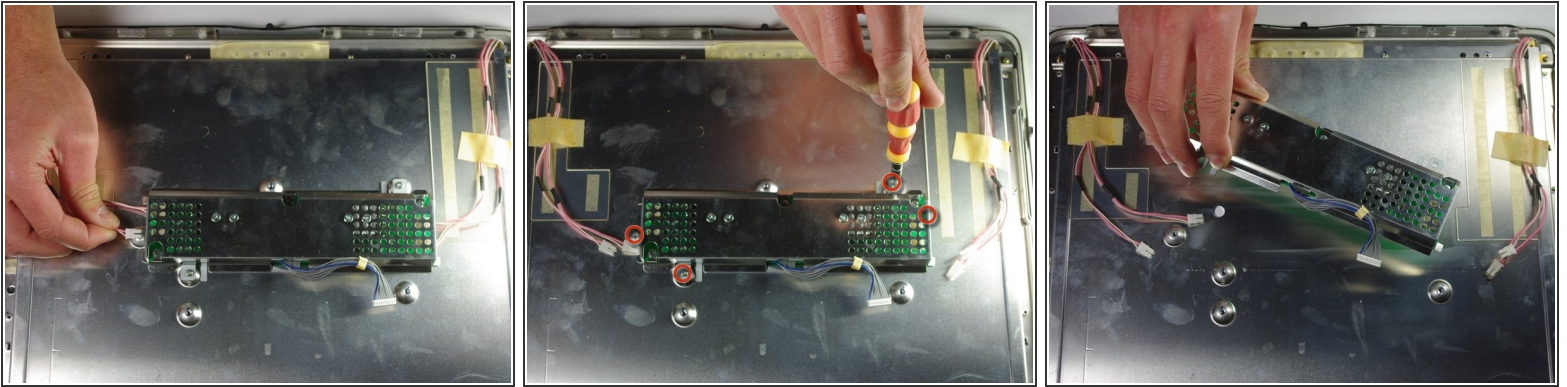
- Unscrew the four screws (4.79x2.33mm) on the metal box using the PH 2 screwdriver.
- Lift away the metal cover to reveal a circuit board with you hand.
- Unscrew the two terminal screws (4.79x2.34mm) using the PH 2 screwdriver.

Step 9



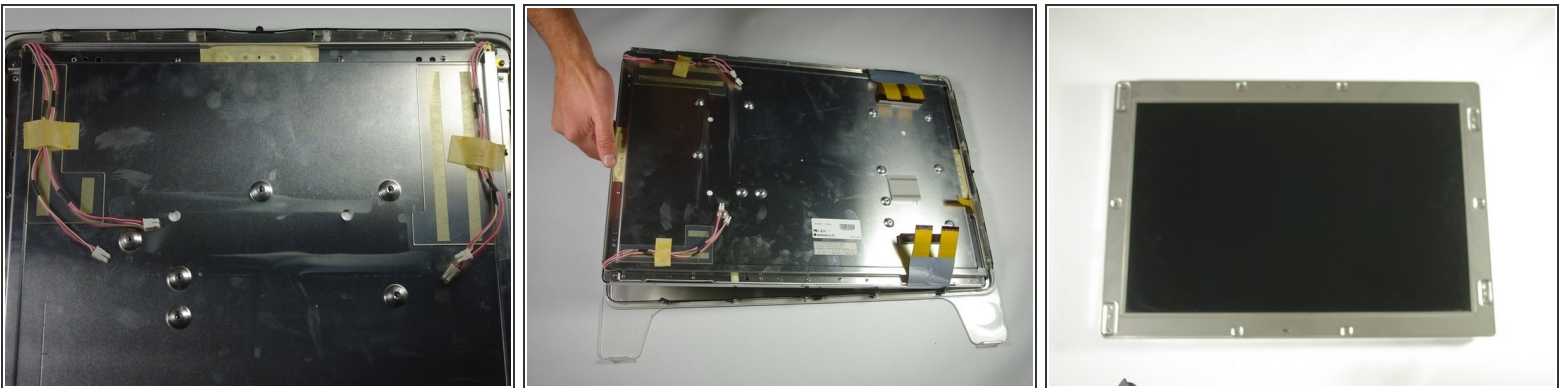
- Remove the terminal cover.
- Remove the circuit board from the right side of the unit by gently lifting it out.

Step 10 — Voltage Inverter



- Turn your attention to the left side of the cinema display.
- Using your fingers, unplug the small white plugs with pink wires from the top and bottom of the circuit board.
- Using the PH 2 screw driver, remove the four screws (6.9 x 2.55 mm) holding down the circuit board.
- Remove the circuit board by gently lifting it from the display.

Step 11 — LCD Screen



- Lift the screen from the surrounding front cover by sliding your fingers between the two pieces and lifting.

To reassemble your device, follow these instructions in reverse order.