



# Apple Cinema Display M8149 Voltage Inverter Replacement

Replace Voltage Inverter.

Written By: Brett Murphy



---

## INTRODUCTION

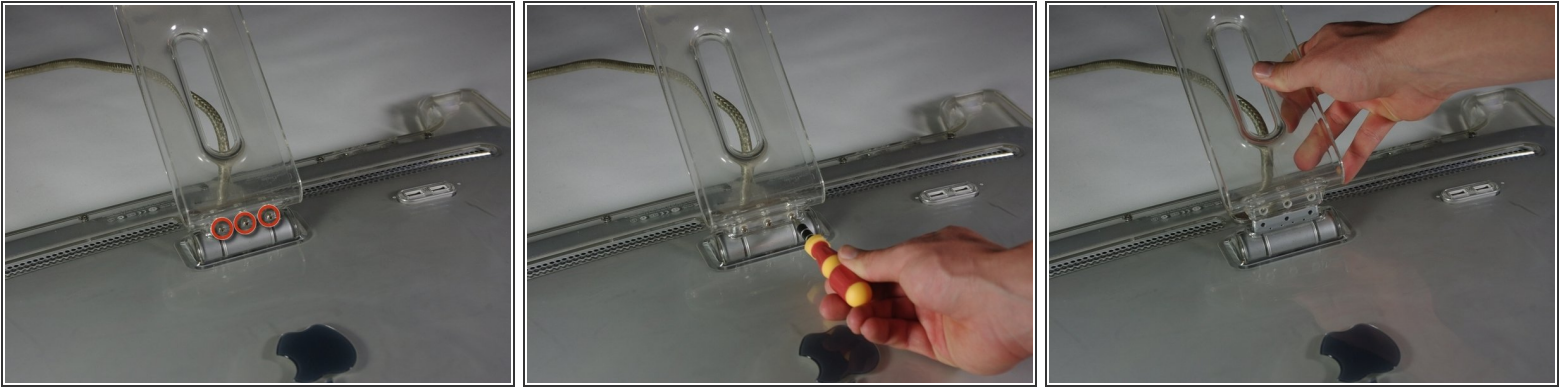
This guide will show you how to replace the Voltage Inverter Board. The tools required for this section are the supurger and the PH 2 screwdriver.

---

### TOOLS:

- [Phillips #2 Screwdriver](#) (1)
-

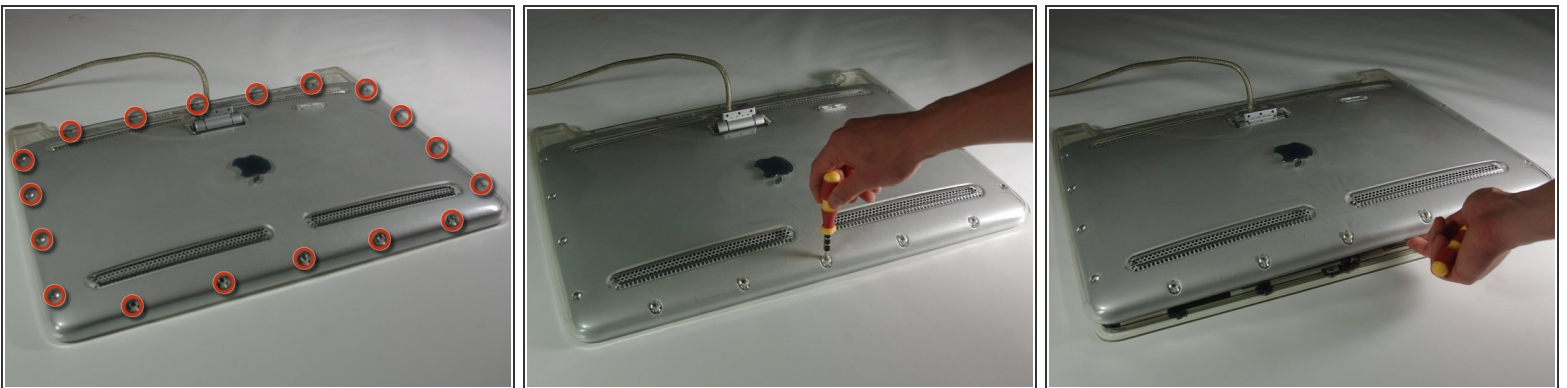
## Step 1 — Accessing Control Boards



 Before starting, make sure the display is **UNPLUGGED**. Failure to do so can result in shock and serious injury.

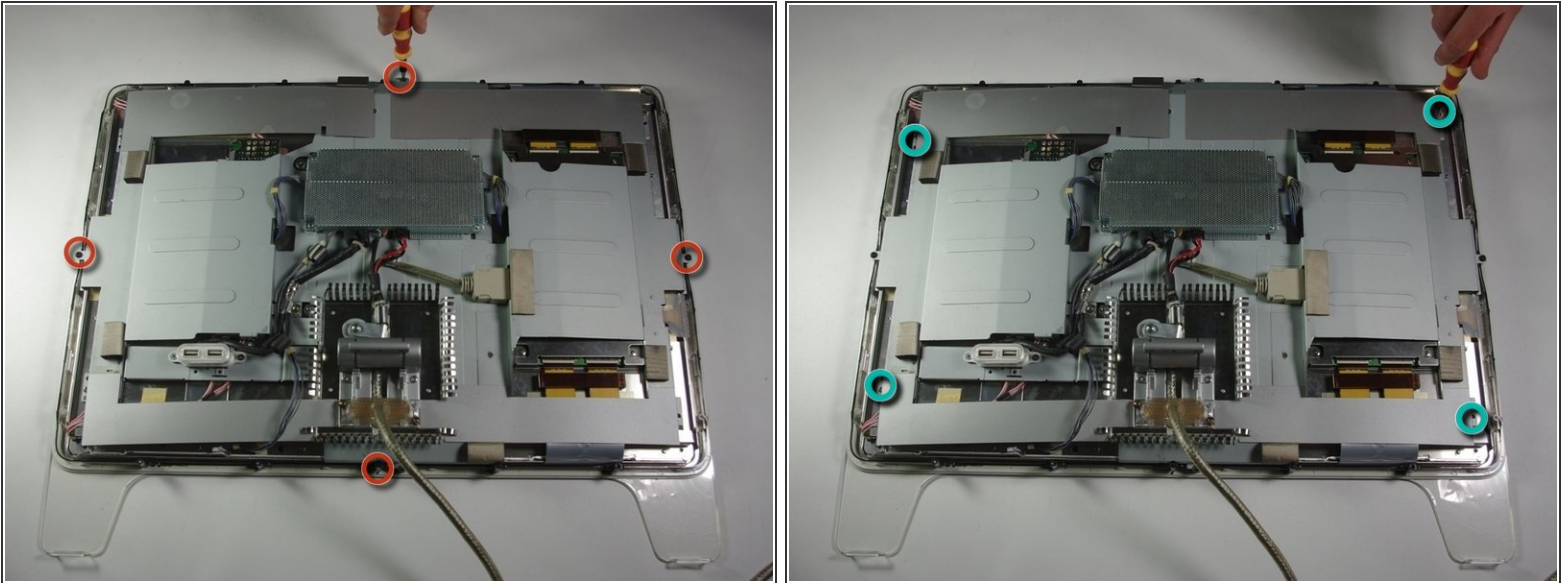
- Flip the Cinema Display so it is on its face and the feet are pointed away from you.
- Using the PH 2 screw driver, unscrew the three feet screws (9.52 x 4.43mm).
- Remove the back foot from the hinge mount by grabbing the foot and pulling upwards.

## Step 2



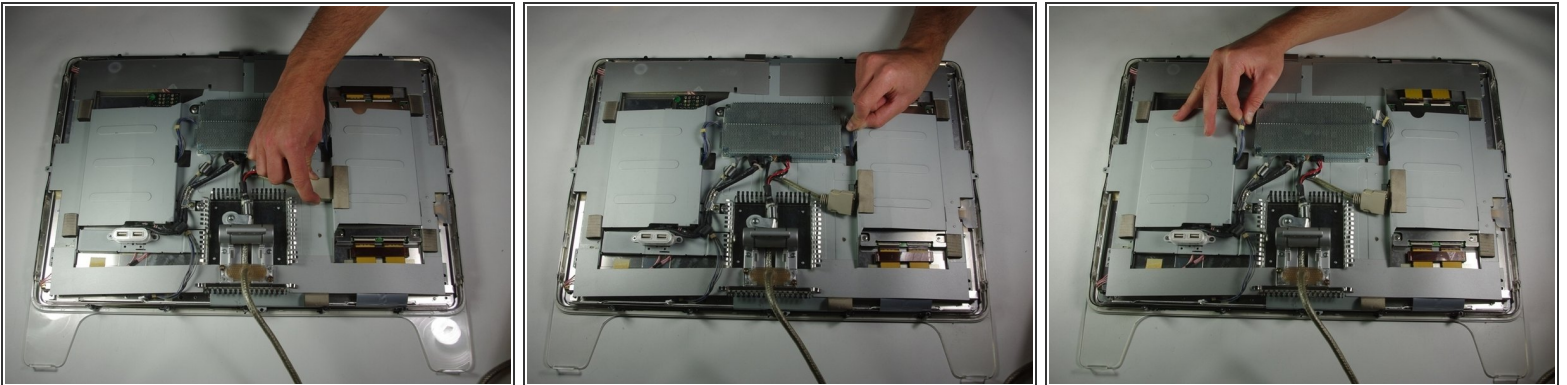
- Locate and remove the back plate screws (5.25 x 4.43 mm) using the PH 2 screw driver.
- Lift the back plate off of the display.
- Completely remove the back plate and set it aside.

### Step 3



- With the PH 2 screw driver, remove the four rim screws (9.52 x 3.43 mm) located on the outer rim of the metal cover.
- Next, unscrew the four cover screws (11.91 x 2.89 mm) using the PH 2 screwdriver.

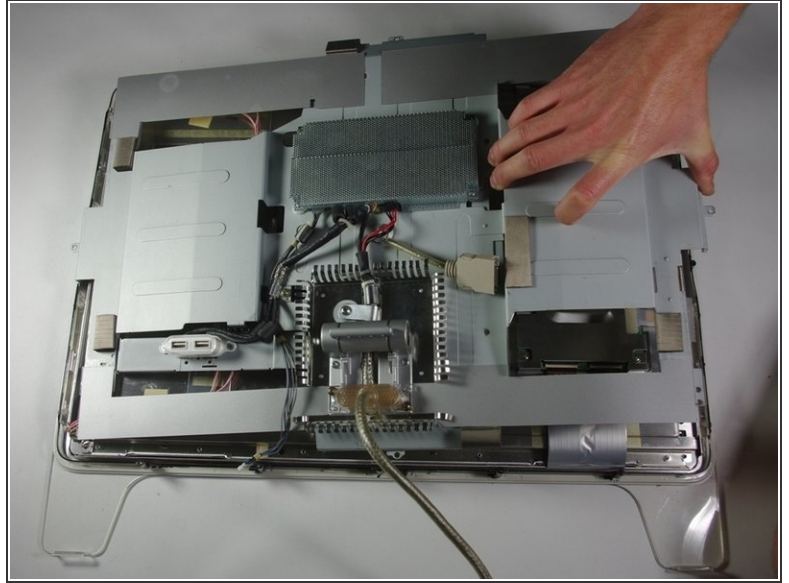
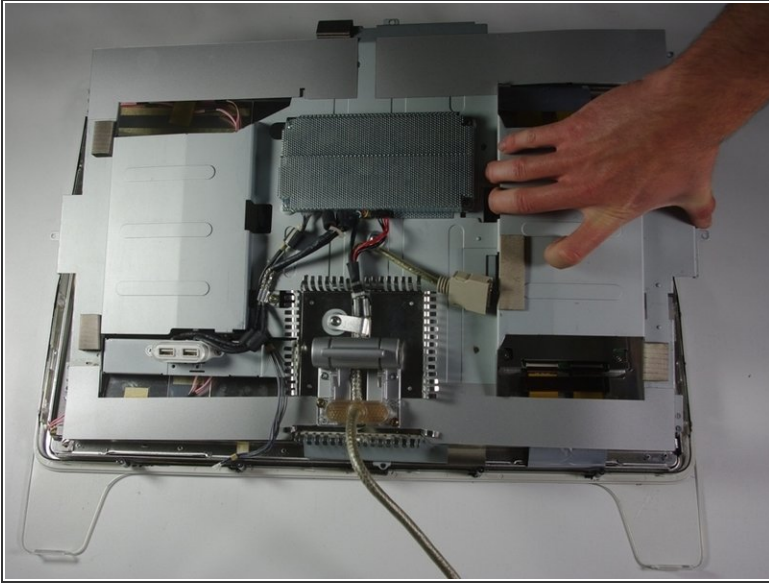
### Step 4



- Unplug the large plug that connects the control board to the rest of the display.
- Unplug the blue and gray plug on the right side of the control board.
- Unplug the blue and gray plug on the left side of the control board.

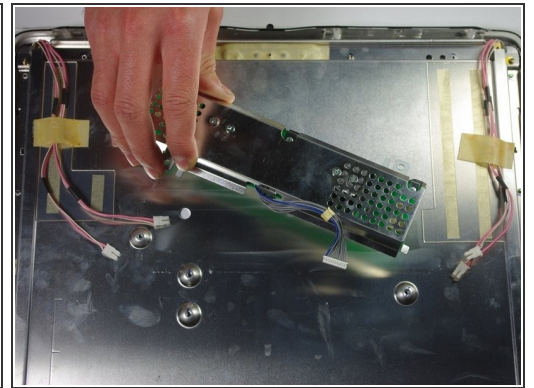
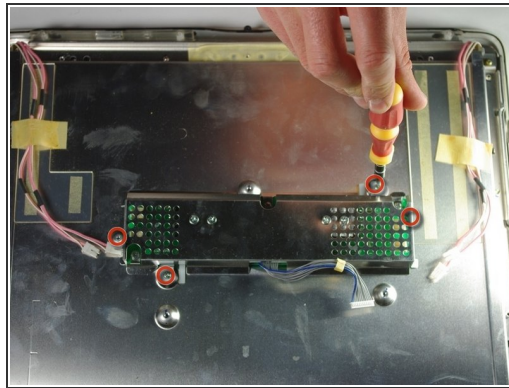
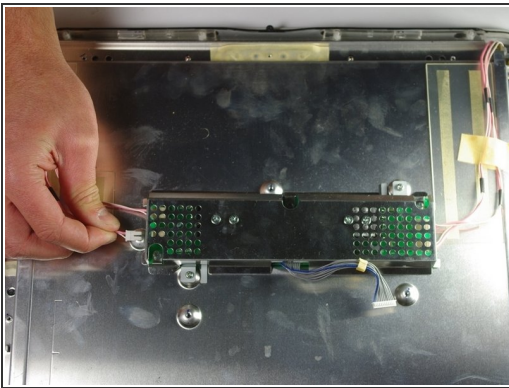


## Step 5



- Lift the large metal cover which spans across the whole display.

## Step 6 — Voltage Inverter



- Turn your attention to the left side of the cinema display.
- Using your fingers, unplug the small white plugs with pink wires from the top and bottom of the circuit board.
- Using the PH 2 screw driver, remove the four screws (6.9 x 2.55 mm) holding down the circuit board.
- Remove the circuit board by gently lifting it from the display.

To reassemble your device, follow these instructions in reverse order.