



Apple Cinema HD Display 30" Teardown

Teardown of the Apple Cinema HD Display 30".

Written By: tr121



INTRODUCTION

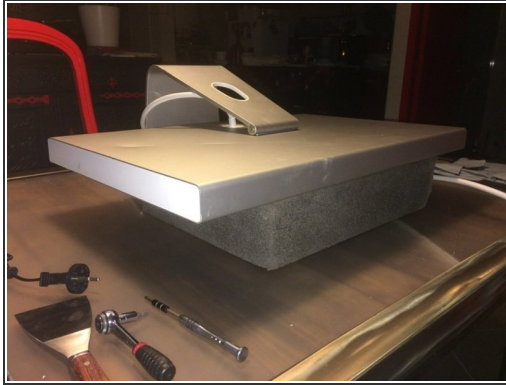
Translated and re-uploaded this guide to the current iFixit repair guide catalog. Old untranslated guide can be found [here](#).



TOOLS:

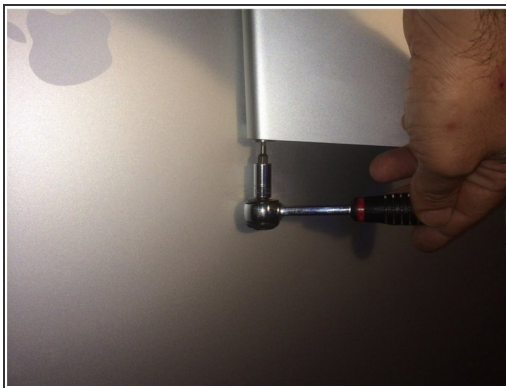
- [Putty knife](#) (1)
 - [Heat Gun](#) (1)
 - [64 Bit Driver Kit](#) (1)
-

Step 1 — Intro



- Gather your tools (look in the teardown description).
 - ❗ You do not specifically need the "64 Bit Driver Kit" I linked, you just need a general screwdriver kit with Torx screwdrivers/bits specifically.
 - ❗ The ratchet in the pictures included is not necessary, too.
- Lay the cinema display face down on a soft surface as not to scratch or harm the LCD panel.

Step 2 — Stand removal pt. 1



- Unscrew the two screws on either side of the stand attaching the stand to the display.
 - ❗ This is where a ratchet may come in handy. Again, it is not required but it may be useful for this step.
- Image 3: Screws remain.

Step 3 — Stand removal pt. 2



- Remove the four Torx screws attaching the stand to the cinema display.
- Remove the stand.

Step 4 — Left side panel



- Wedge a putty knife into the plastic side piece. Don't try to pry the plastic off yet!
- Grab your heat gun or hair dryer and warm the plastic piece up for about 30 seconds (using a heat gun) or up to a minute (hair dryer).
- Carefully work the plastic side piece off the cinema display using the putty knife. Re-heat the plastic piece again if you run into a hard spot.

Step 5 — Right side panel



- Repeat step four's steps.

⚠ Work carefully when prying this specific side panel off. **Be sure to NOT insert the putty knife near the buttons** when removing the side panel with buttons (you risk severing the button board cable underneath the plastic piece).

Step 6 — Panel under right side panel



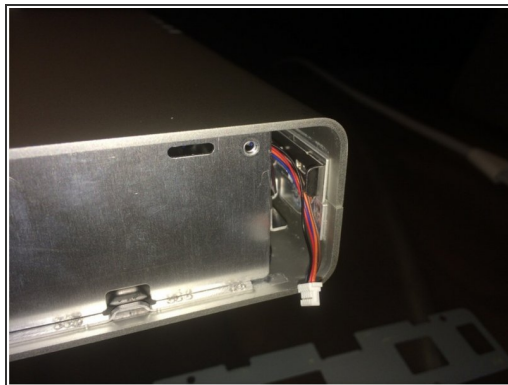
- Remove the four Torx screws.
- Use a pry tool to remove the secondary side panel.

Step 7 — Left secondary side panel



- Rinse and repeat (repeat step 6) for the left secondary side panel.
- ⓘ The screws should be the same length and in the same place as the right side panel.

Step 8 — Undo latches



- Wedge your putty knife in between the metal pieces pointed to by the arrow. Move the metal piece circled green towards the display panel to disengage the clip. Repeat for the identical clip on the opposite side of the display.

Step 9 — Enclosure removal pt. 1



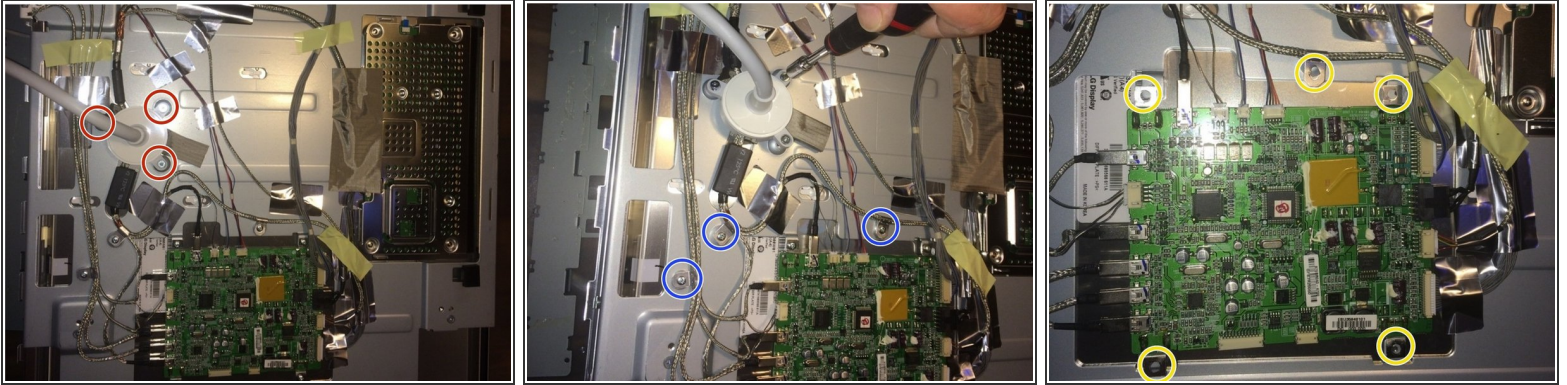
- First image: Begin to separate the metal enclosure at the bottom. Use prying tools to undo the retaining clips if needed. **This may take time and effort. Be patient and take care as to not damage internal parts.**
- Second image: Thread the all-in-one cable out of the hole in the metal enclosure and out of the way.

Step 10 — Enclosure removal pt.2



- Peel the tape up that is covering a small component. Then peel up the remaining component off the enclosure.
- Not shown: Bend the enclosure apart just enough as to slip the display panel assembly out of the enclosure. This is scary, and may prove tricky if you are alone.
- ① Tip: Call over a buddy and have them hold the two parts of the enclosure apart while you lift the display panel assembly out of the enclosure.

Step 11 — All-in-one cable & logic board removal



- Remove 3 screws holding the all-in-one cable in place. (could not tell screw type from the pictures)
- Remove three more screws.
- Remove 5 more screws holding the logic board intact (there may be more screws to remove that I could not see in the pictures, just be aware of this and be prepared to remove more screws)