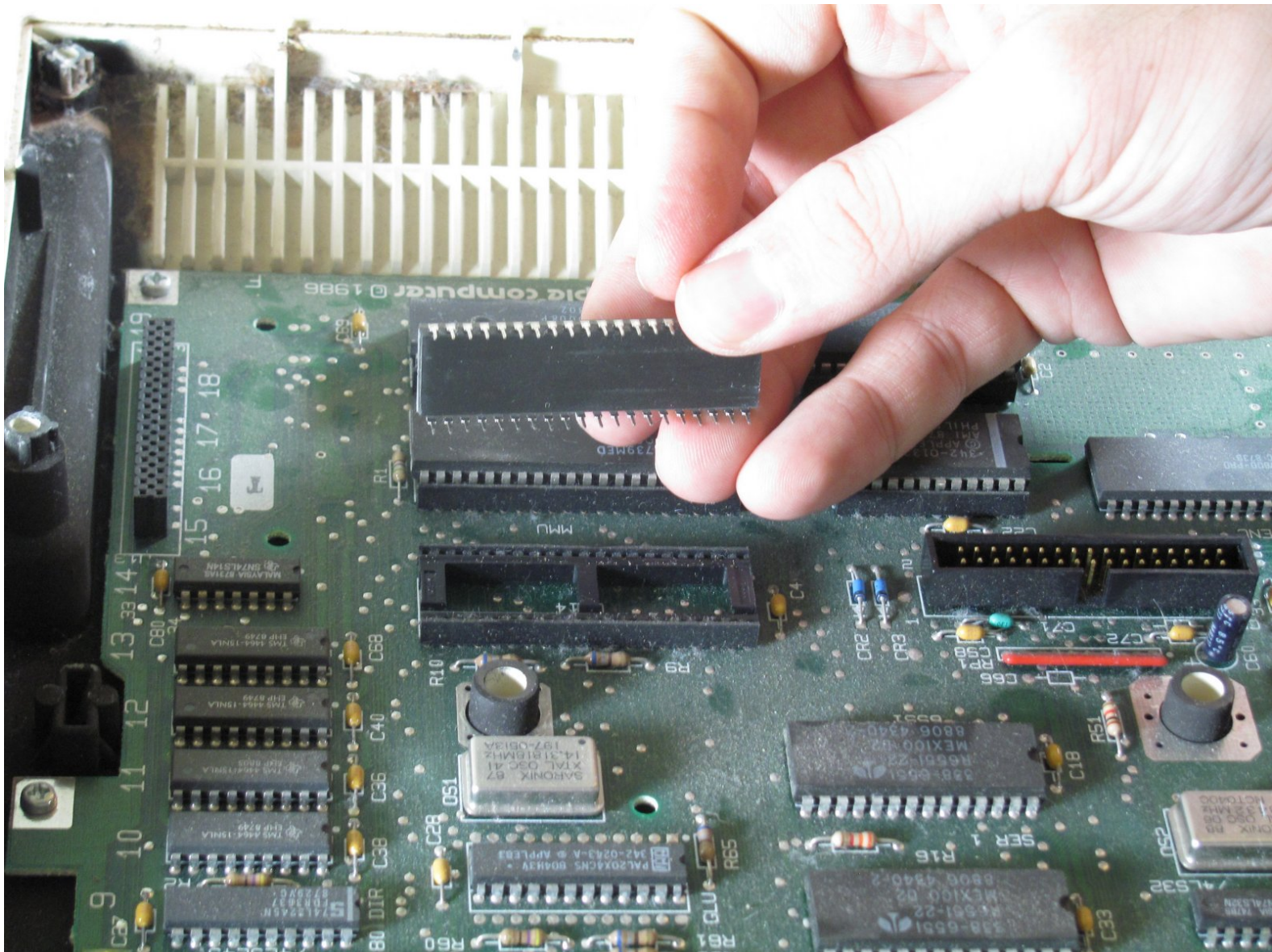




Apple IIc IC Chips Replacement

Re-seating or replacing the chips on the motherboard.

Written By: Josiah



INTRODUCTION

This guide will help you re-seat or replace the IC chips on the computer's mother board. The IC chips, or Integrated Circuit chips, are used to perform various vital functions on the computer. Chips coming unseated or going bad is a common problem with the Apple II series and is easily fixed or replaced. Re-seating your chips will help if you are having trouble running your computer.



TOOLS:

- [Phillips #2 Screwdriver](#) (1)
 - [iFixit Opening Tools](#) (1)
-

Step 1 — Cover



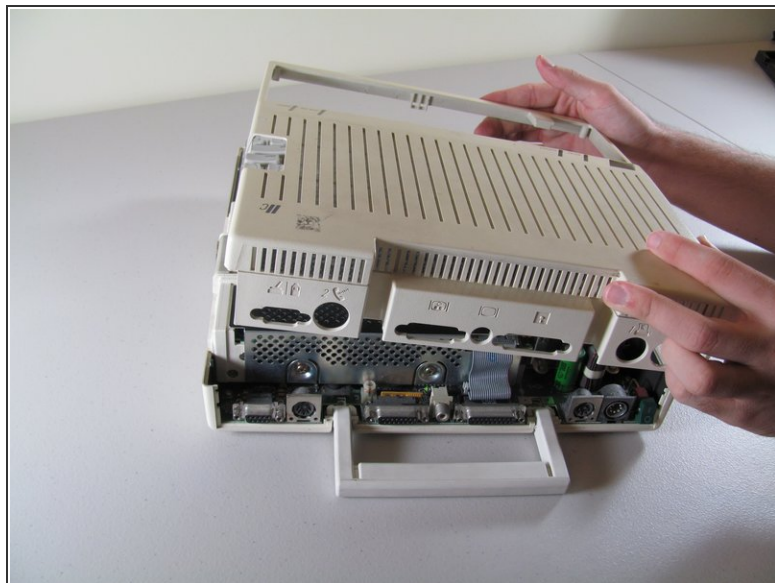
- Remove the six 19 mm long screws with a #2 Phillips head screwdriver.

Step 2



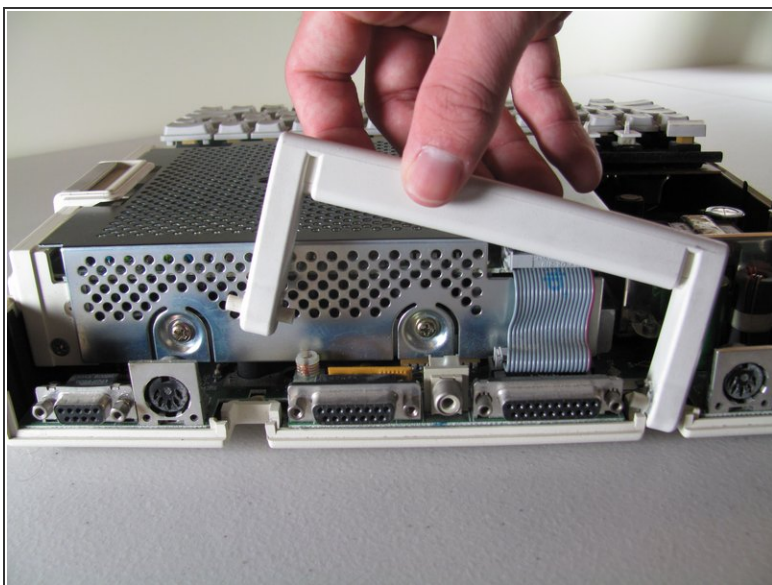
- Release the catch by pushing it in using a plastic opening tool.
- ⓘ The catch is off-center, but in line with the middle of the speaker underneath.

Step 3



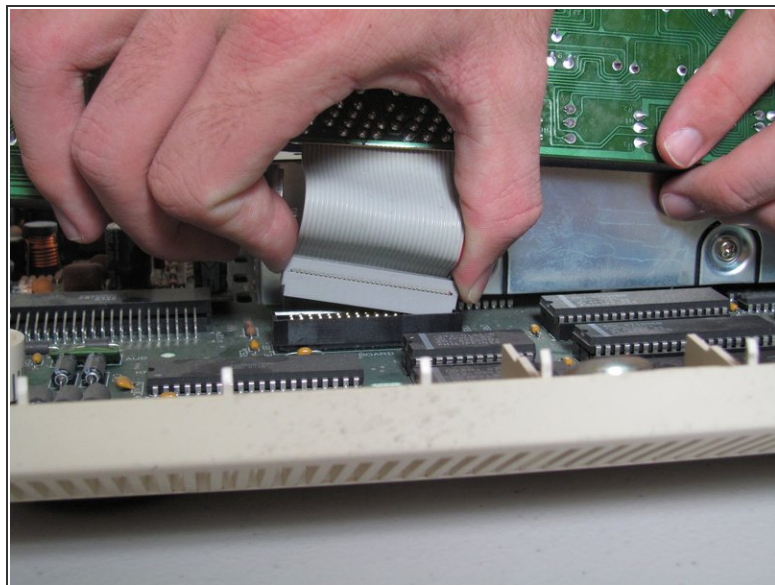
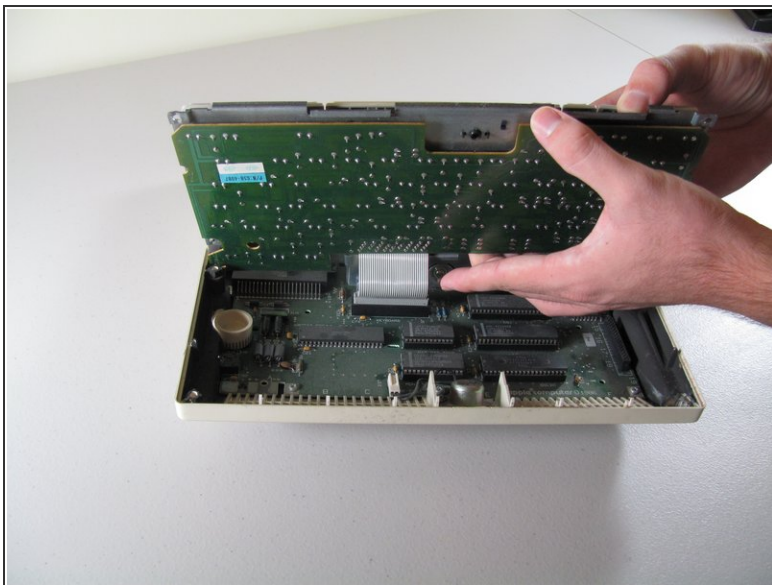
- Slide the case toward the ports on the back, then grip under the catch and pull up while moving toward the ports to remove.

Step 4



- Lift the handle straight up to remove.

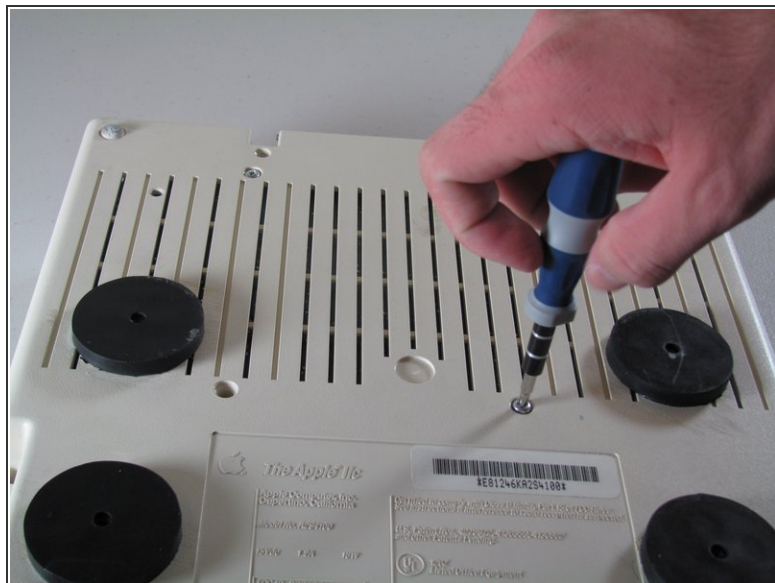
Step 5 — Keyboard



- Tilt the keyboard up while detaching the ribbon connection by pulling it straight up. You may have to wiggle the connector sideways to loosen it.

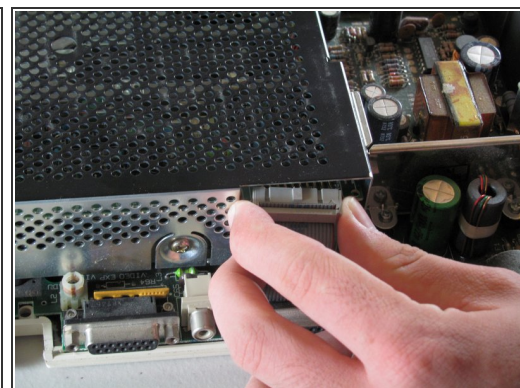
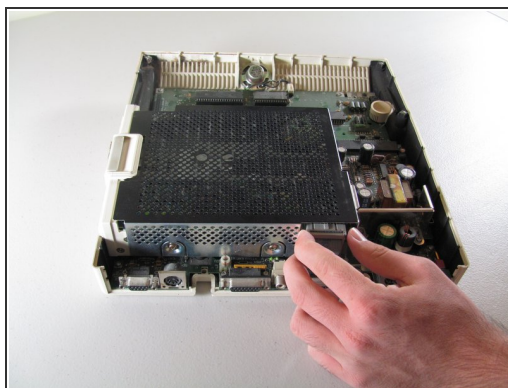
⚠ Be careful not to force the ribbon while pulling it out to avoid tearing. Do not try to pull the ribbon out by pulling the keyboard as it may cause tearing.

Step 6 — Floppy Drive



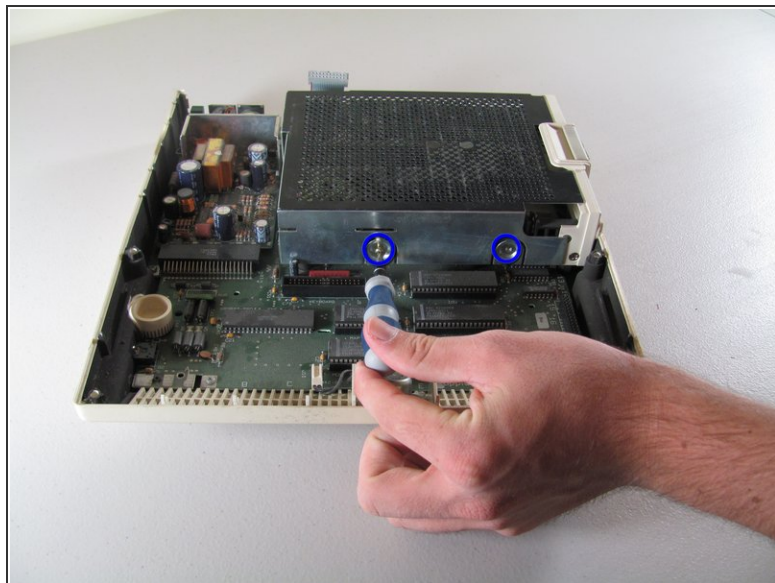
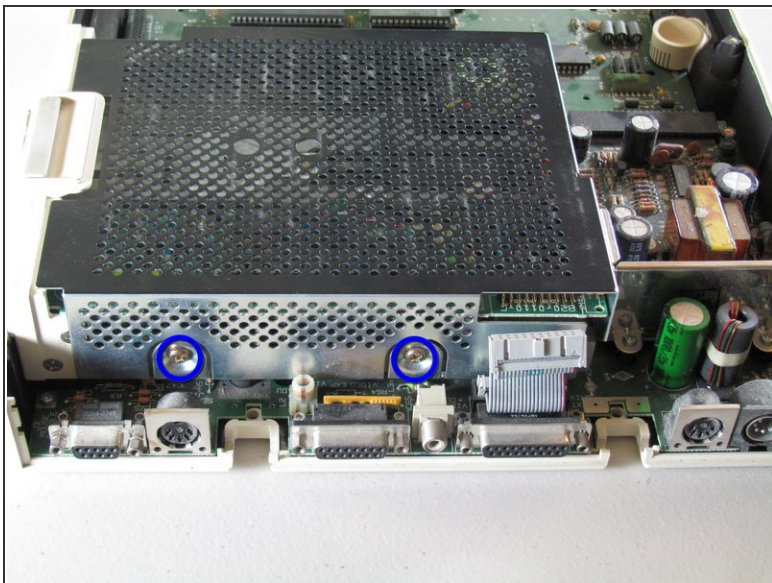
- Carefully place device upside down to remove the four centered 21.1 mm screws that secure the floppy drive.

Step 7



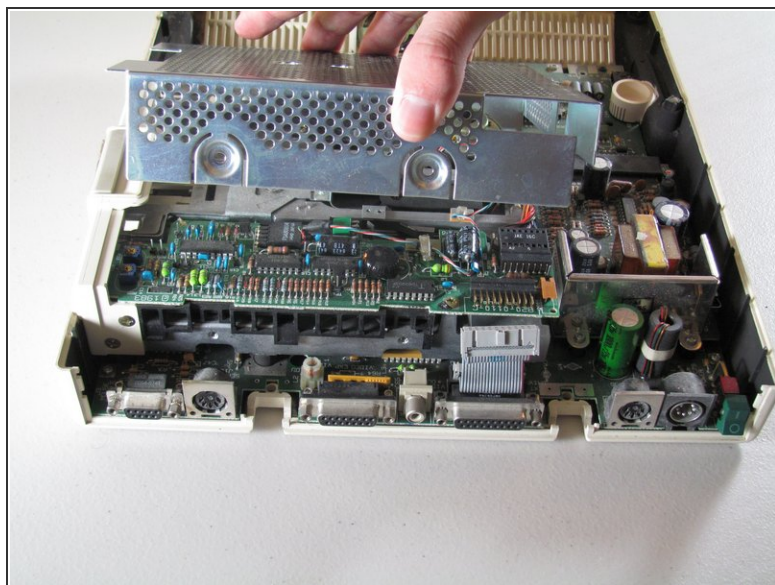
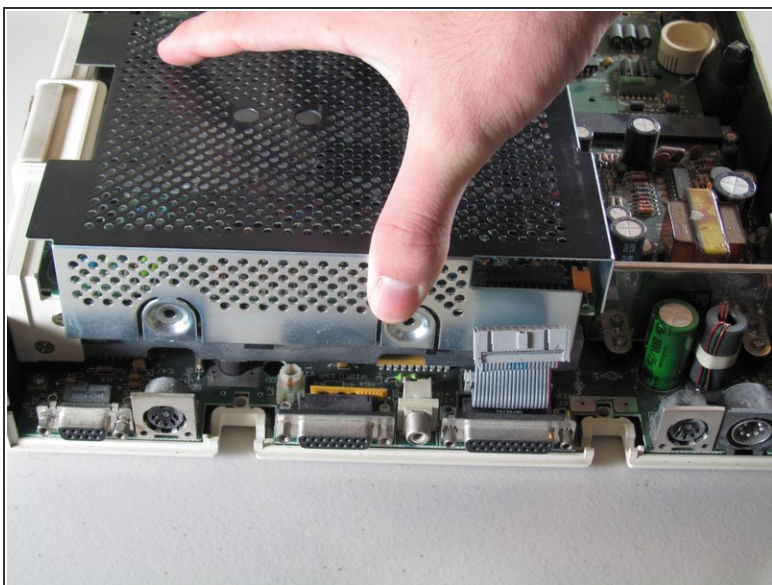
- Carefully detach ribbon connector from floppy disk drive by pulling it out horizontally.

Step 8



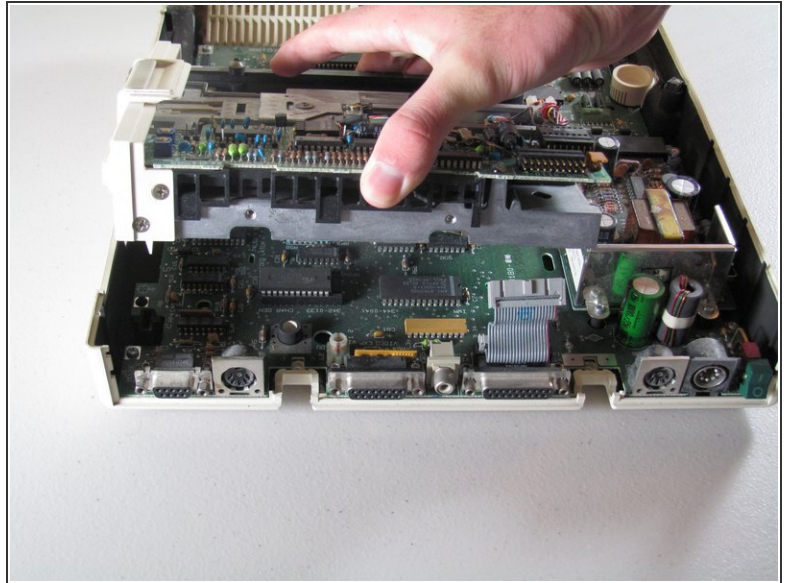
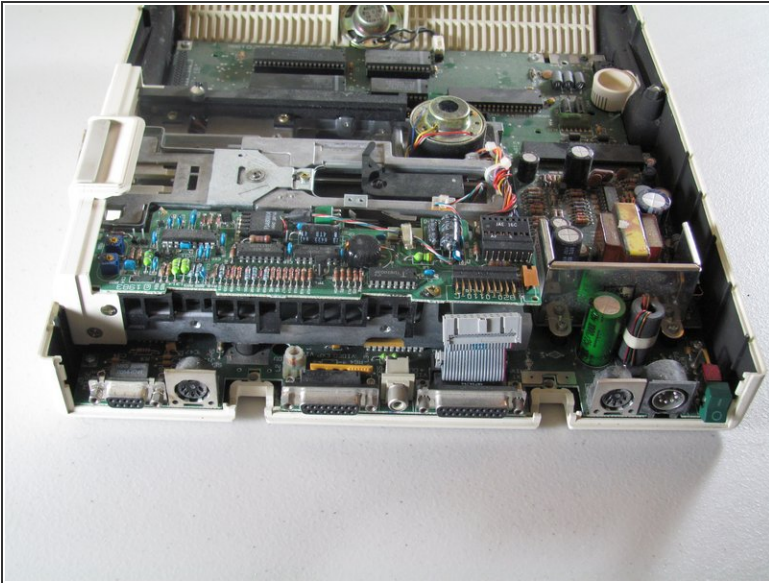
- Unscrew the four 8.5 mm screws that attach the floppy drive cage. Two screws are located on the front and back of the cage.

Step 9



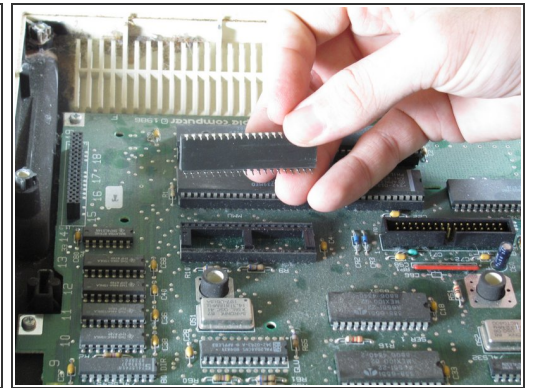
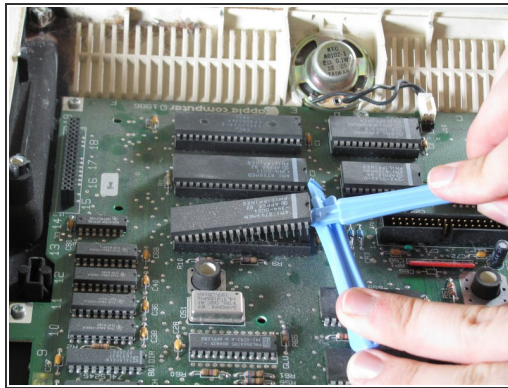
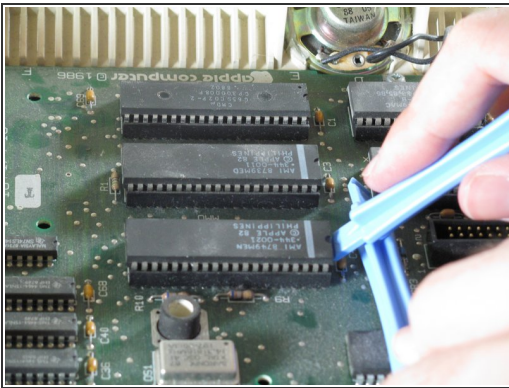
- Carefully lift the floppy drive cage straight up to remove it.

Step 10




- Lift the floppy drive straight up to remove.

Step 11 — IC Chips



- Use the plastic opening tools to carefully lever the IC chips out of the holder. Gently lever one end and then the other to lift it out of the chip holder.

 Do not force IC chips out! Pins are very fragile and can easily bend or break.

To reassemble your device, follow these instructions in reverse order.