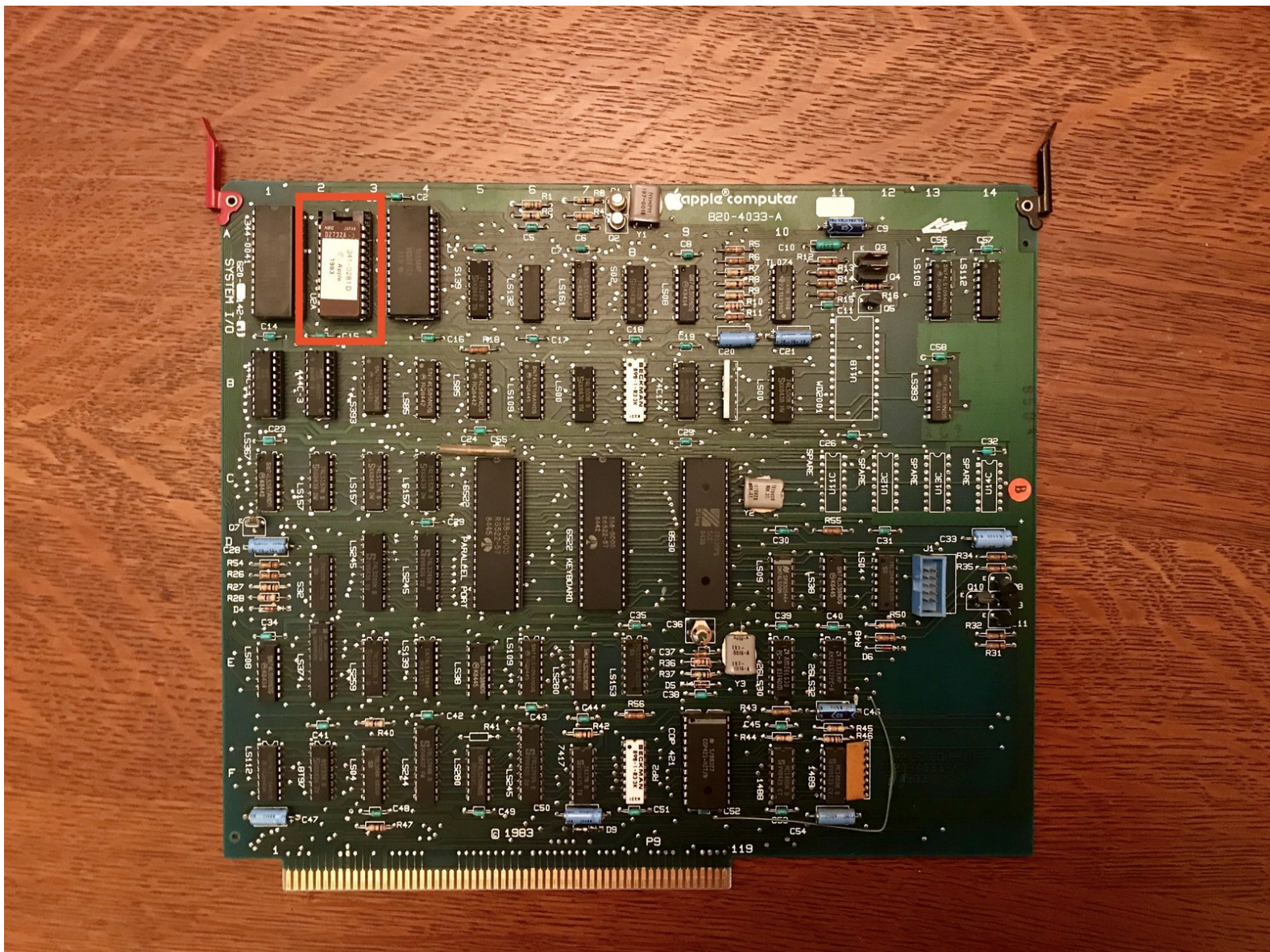




Apple Lisa 800K Floppy Drive Installation

This guide will demonstrate how to install a 800K Floppy Drive.

Written By: LisaGuide





PARTS:

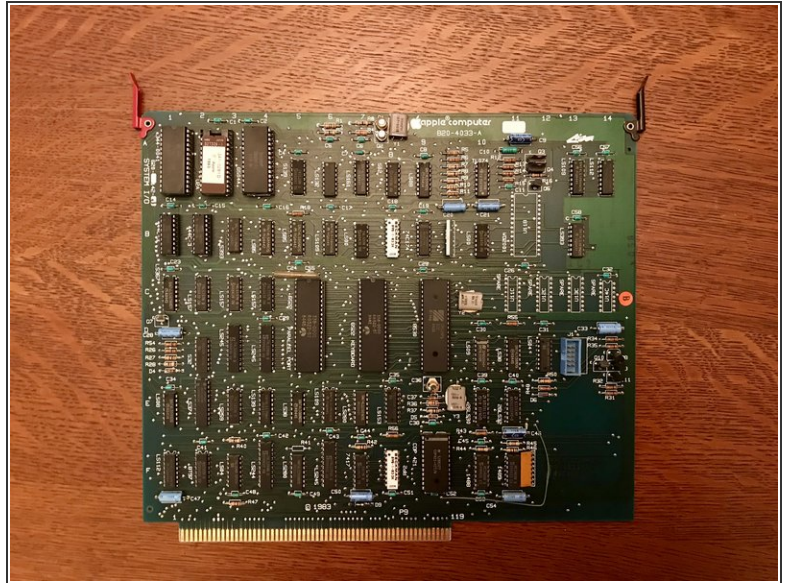
- [Apple Lisa 800K Floppy ROM](#) (1)
- [Apple Lisa 800K Floppy Drive](#) (1)
- [Apple Lisa 800K Floppy Drive Bracket](#) (1)

Step 1 — Remove Card Cage



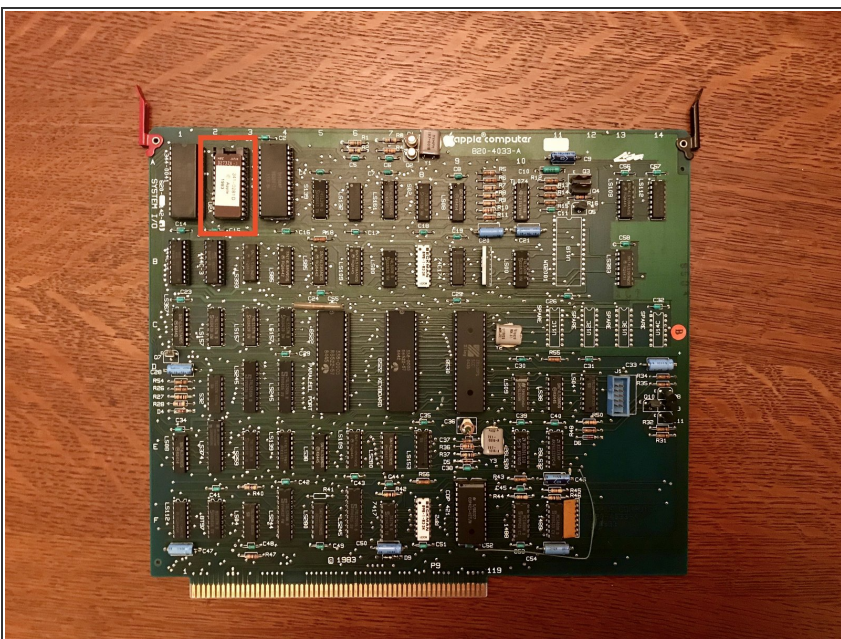
- Follow the [Apple Lisa Disassembly Guide](#) to remove the Lisa's rear panel.
- Remove the Lisa's Card Cage.

Step 2 — Remove the I/O Board



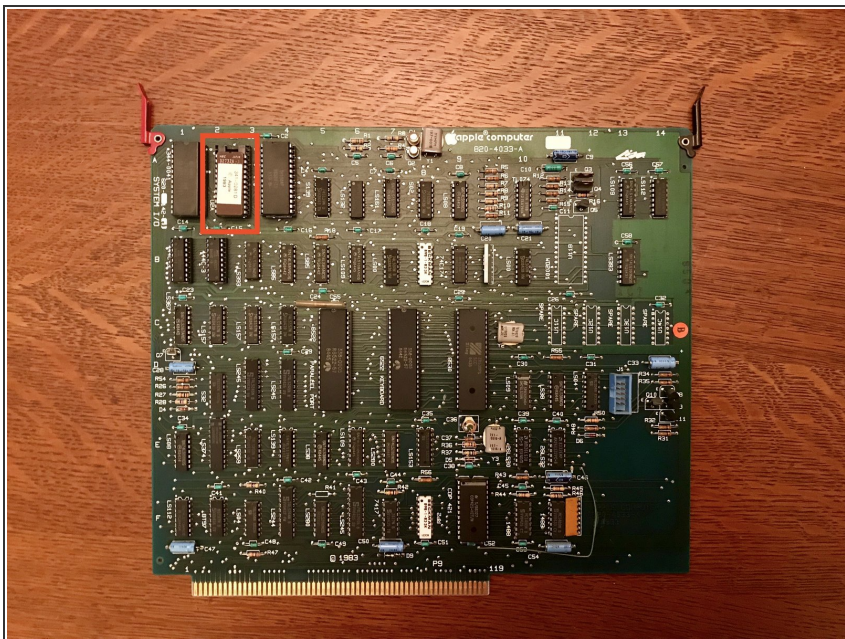
- Remove the Lisa's I/O Board. The I/O Board's clips are marked in red.
- Release both clips holding the I/O Board.
- Pull the I/O Board up to remove it.

Step 3 — Remove Floppy ROM



- Locate the chip labeled U2A at location 2A.
- Remove the ROM chip with a chip removing tool of your choice.

Step 4 — Installing the 800K ROM



- Insert the 800K ROM in the empty socket from step 3.

Step 5 — Reassembly



- Reinstall the I/O Board.
- Reinstall the Card Cage.
- Reinstall the Lisa's rear panel.

Step 6 — Remove Front Panel



- Follow the [Apple Lisa Disassembly Guide](#) to remove the Lisa's front panel.

Step 7 — Remove the Drive Cage



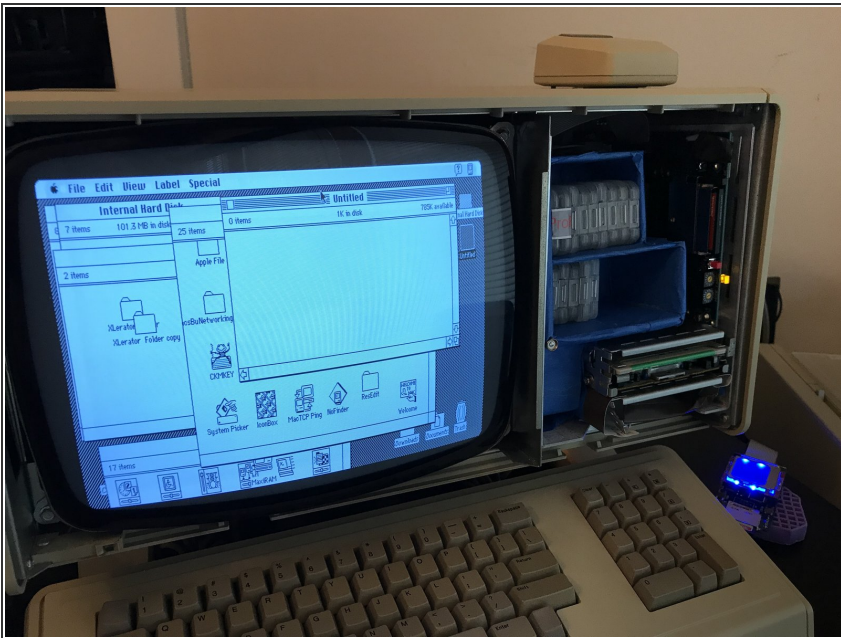
- Twist the thumbscrew below the Drive Cage.
- Slide Drive Cage out.
- Unplug any attached cable.

Step 8 — Remove 400K Floppy Drive



- Unscrew all the screws on the bottom of the Drive Cage to remove the floppy drive.

Step 9 — Installing 800K Floppy Drive



- Attach the 800K Floppy Drive to the 800K Drive Bracket. If you do not have an official 800K bracket then you can be create and fashion one yourself as displayed in the image.
- Reattach all Drive Cage wires.
- Slide Drive Cage back into the Lisa.

Step 10 — Reinstall the Lisa's Front Panel



- Reinstall the Lisa's Front Panel.

Step 11 — Installing the 800K Driver



- The 800K floppy drive will perform as a 400K drive if the 800K driver is not installed.
- MacWorks XL 3.0 and below does not support 800K functionally. MacWorks Plus and MacWorks Plus II natively support 800K functionally automatically.
- Lisa Office System 3.0 and newer supports 800K functionality with a driver.
- The driver can be found [here](#).
- The 800K driver floppy supplies the driver installer utility.

To reassemble your device, follow these instructions in reverse order.