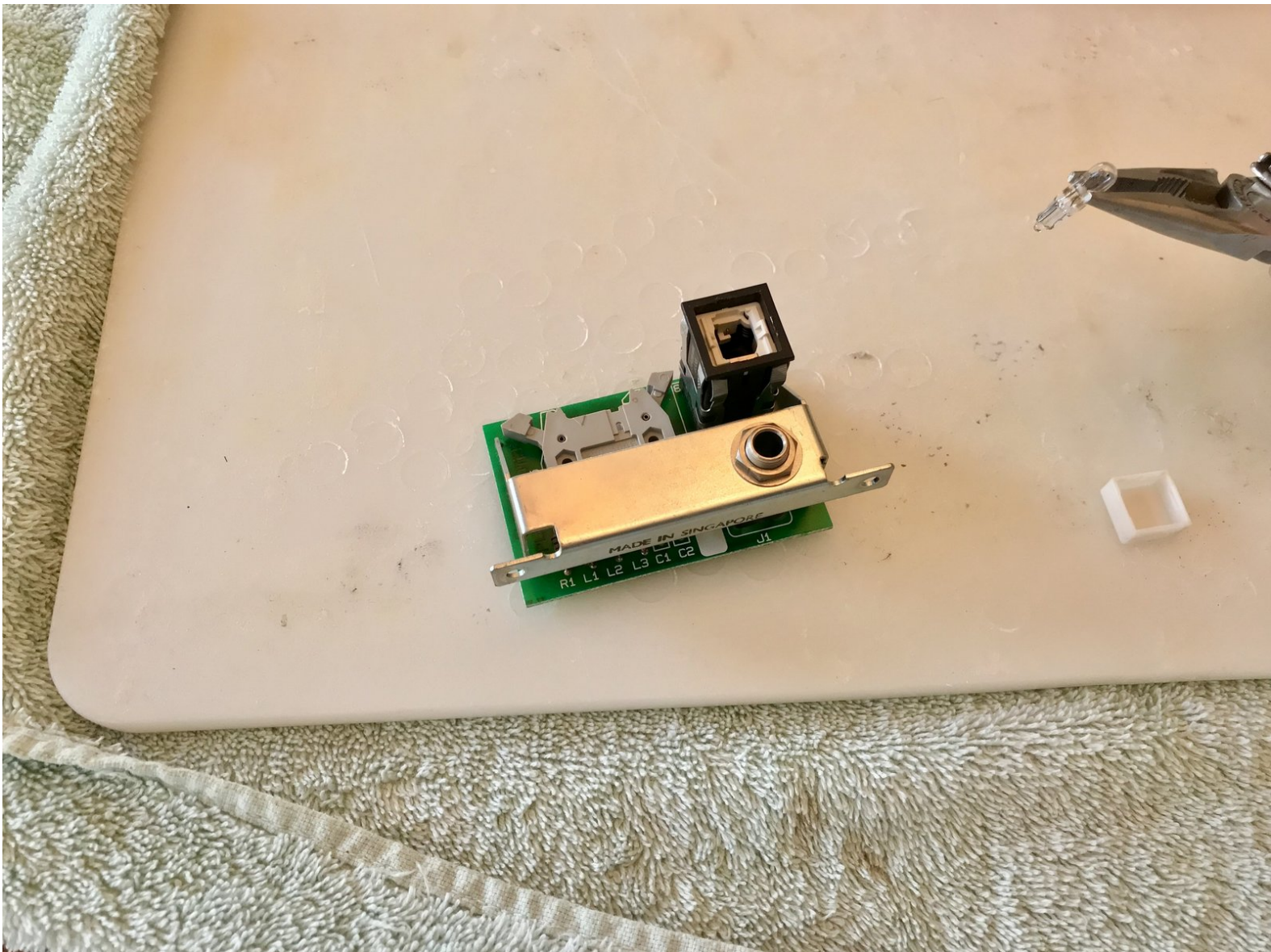




Apple Lisa Soft Switch Lamp Replacement

In this guide you will learn how to replace the soft switch (power switch) lamp.

Written By: LisaGuide



**TOOLS:**

- [Philips head screwdriver](#) (1)

**PARTS:**

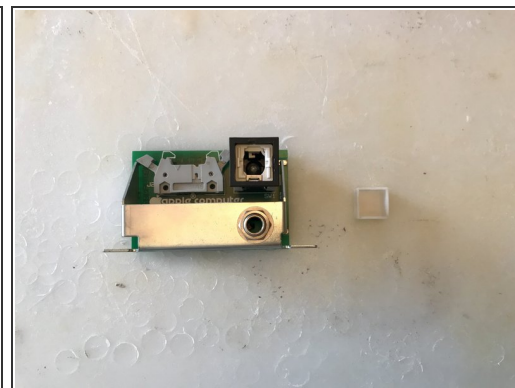
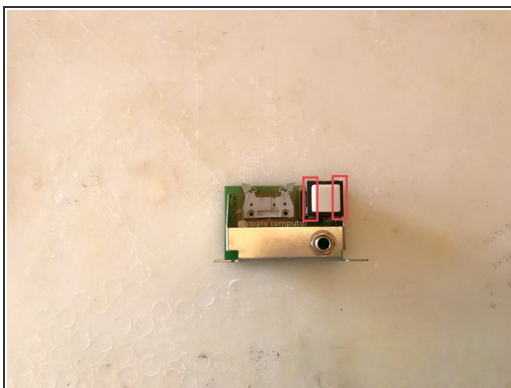
- [Apple Lisa SoftSwitch Lamp](#) (1)

Step 1 — Disassembly



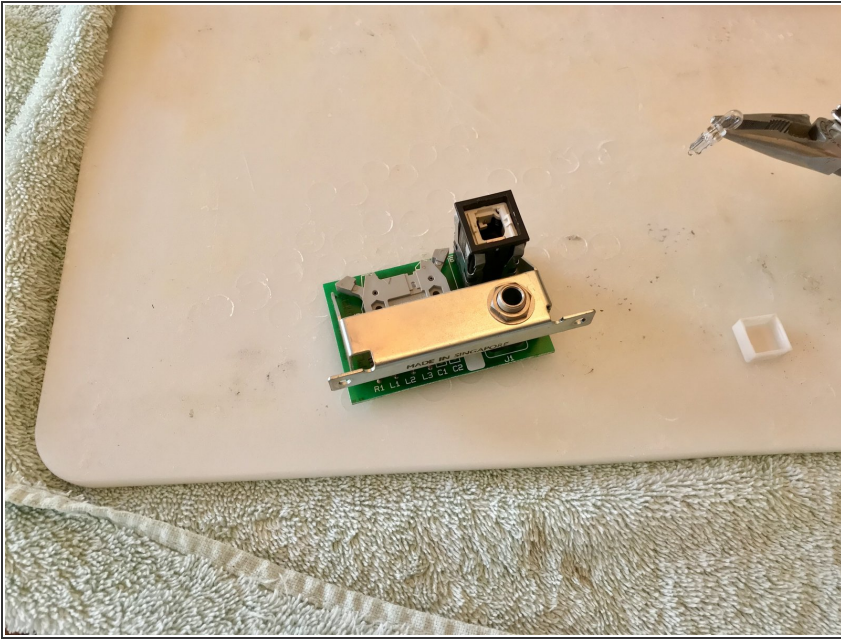
- Follow the Apple Lisa disassembly guide steps 1-9.

Step 2 — Remove Lamp Cover



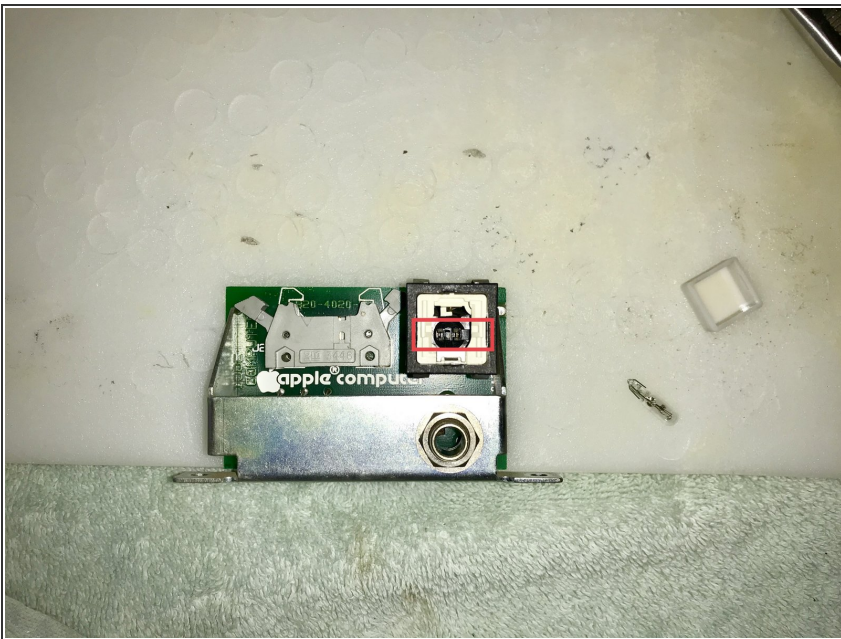
- Insert something thin, non metallic, and sturdy. This will pop the the cover off the two clips that hold it in.

Step 3 — Remove Bulb



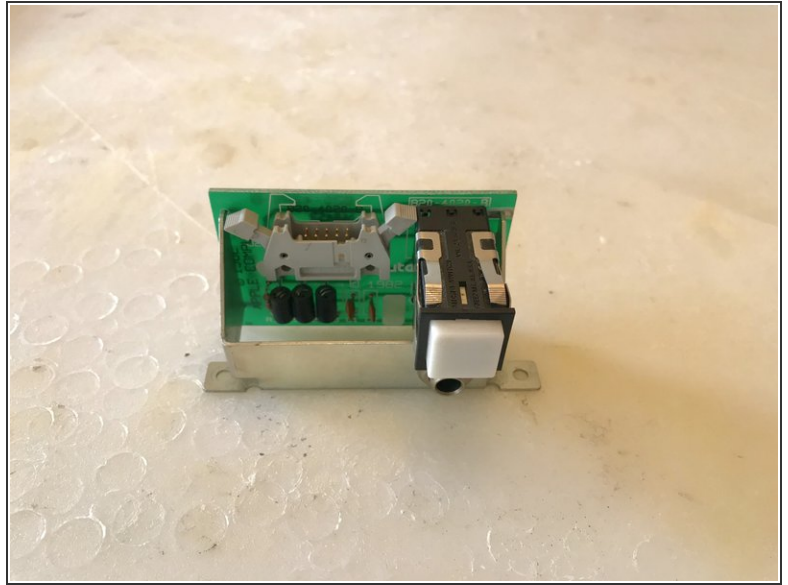
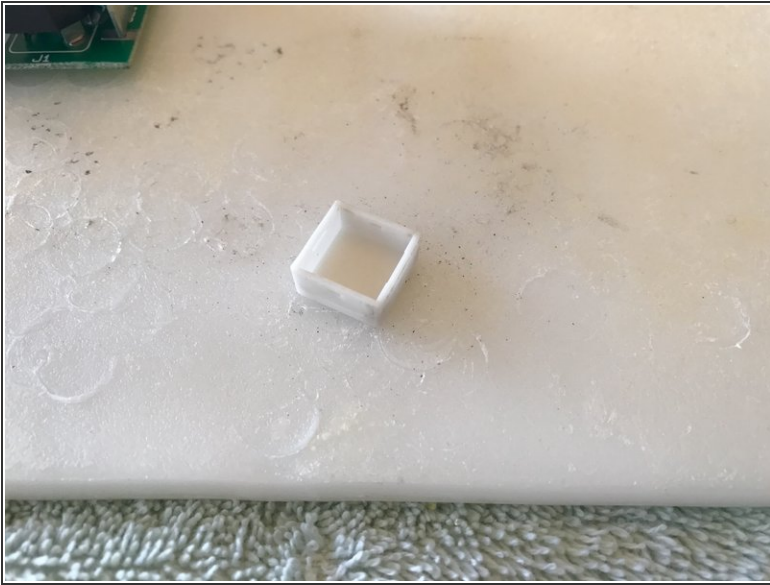
- Be careful and remove old bulb with needle-nose pliers.

Step 4 — Bulb Insertion



- When inserting the new bulb be careful to line up the prongs.

Step 5 — Cover Replacement



- The cover will have two small holes and two larger notches. The two smaller notches will go up and down and the larger notches go left and right.

Step 6 — Reassemble



- Follow disassembly guide steps in reverse to reassemble.

To reassemble your device, follow these instructions in reverse order.

This document was generated on 2020-03-21 05:17:17 AM (MST).

