



# Apple PowerBook G3 400 Display Replacement

This repair guide will teach and show you how to replace the display.

Written By: Isabelle



---

## INTRODUCTION

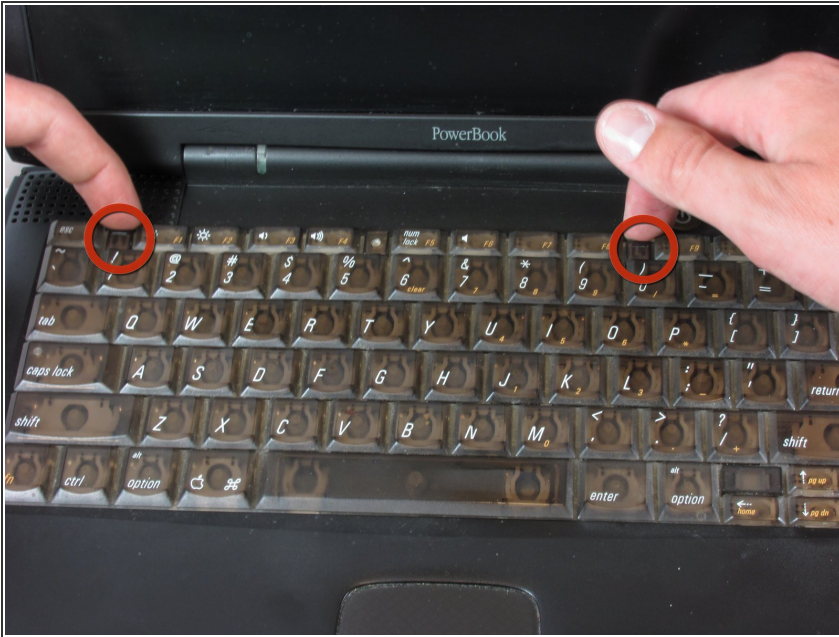
You will do this after you have taken out the hard drive.



### TOOLS:

- [Phillips #1 Screwdriver](#) (1)
  - [T8 Torx Screwdriver](#) (1)
-

## Step 1 — Keyboard



- Pull the keyboard tabs toward you while lifting up on the keyboard until it releases from its hold.
- To lift the keyboard out, pull it up and away from you. Then place the keyboard on the track pad.

## Step 2



- Pull the keyboard ribbon vertically from the logic board to release connection.
- ⓘ The connector may be tight and difficult to remove. If stuck, try rocking the connector back and forth while pulling up until it releases. This same process can be used for many of the connectors on this device.
- ⓘ Remove battery and CD/DVD drives before proceeding any further.

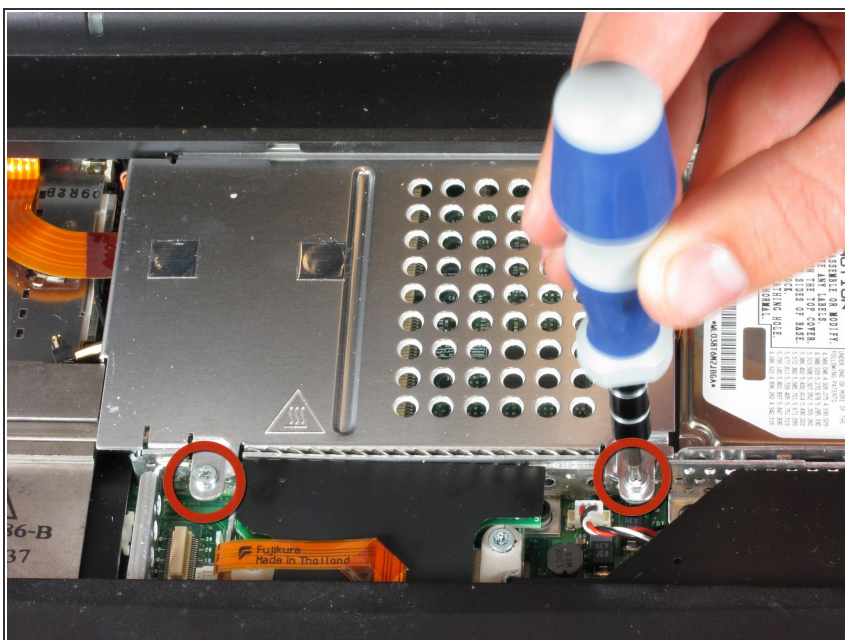


## Step 3



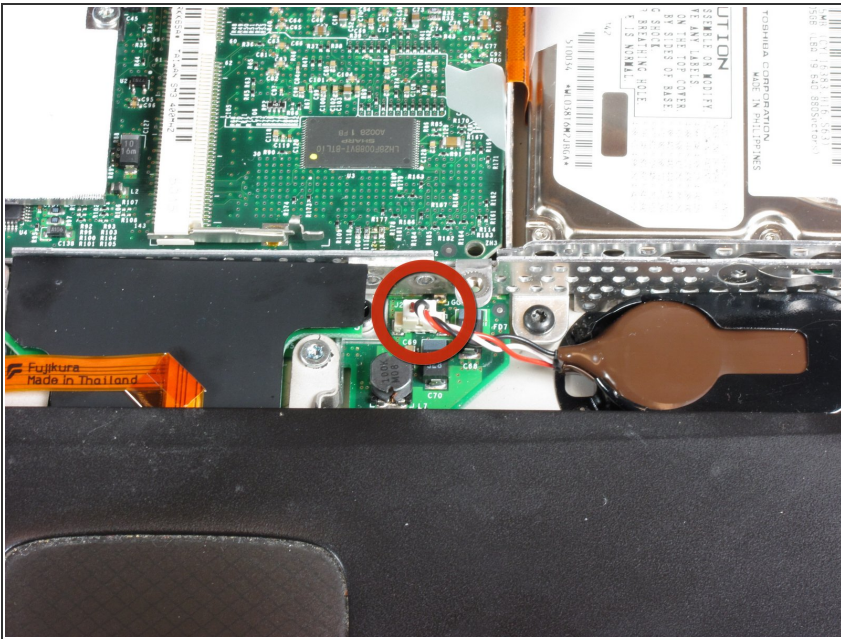
- Your computer should look approximately like this.

## Step 4 — RAM



- Remove the two silver Phillips #1 screws that attach the heat shield to the metal framework.
- Lift the heat shield up and toward you.

## Step 5



- Pull the PRAM battery cable vertically upward to disconnect it.
- Remove the battery by pulling up and to the left.

## Step 6



- Remove the two T8 Torx screws that attach the heat sink to the processor.
- Remove the long silver Phillips #1 screw from the heat sink.



## Step 7



- Lift up the heat sink unit from the left side and remove.

## Step 8



- Lift the processor on the right side and pull directly up.
- The RAM chips should be in the slots on the processor.

## Step 9



- After removing the RAM, your laptop should now look like this.

## Step 10 — Hard Drive



- Locate the orange tab, which should be just left of the hard-drive.
- You must disconnect this orange tab from the logic board to enable the next step.
- It is better to do this by grabbing the plastic connection point, not the relatively flexible cable.



## Step 11



- Grab the plastic strip shown here and gently remove, pulling up and left.
- Pull left to avoid the hard drive catching the casing.

## Step 12



- Once you have removed the hard-drive, your laptop should like this.



## Step 13 — Modem



- Remove the single black Torx screw from the modem.
- Remove the black rectangle that is being held on by the one Torx screw.

## Step 14



- Using your fingers, lift the modem from the socket it is plugged into.

## Step 15



- Disconnect the cable that is attached to the end of the modem to remove the modem.

## Step 16 — Display



- Your computer will look approximately like this.



## Step 17



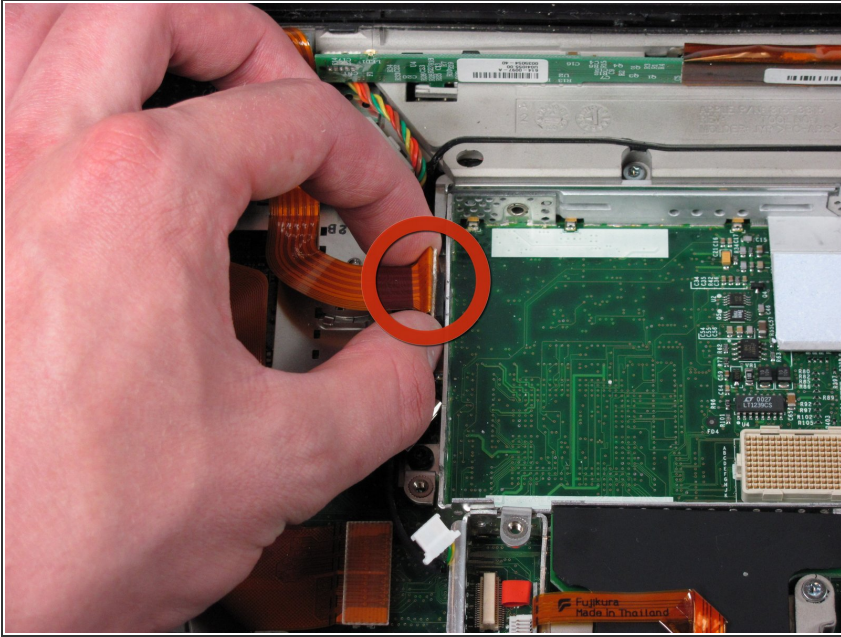
- Push the display back.
- Put your index finger under the power button and gently pull the clutch cover back.
- Repeat for the left side.

## Step 18



- Lift the clutch cover up and off. Pull it towards yourself.

## Step 19



- Disconnect the display cable from the logic board.

## Step 20



- Remove the Torx screw that holds the display cable.
- Pull out thick display inverter board by pulling it up and out. Two tabs will be holding it in place, you need to get pass these to pull the board free.

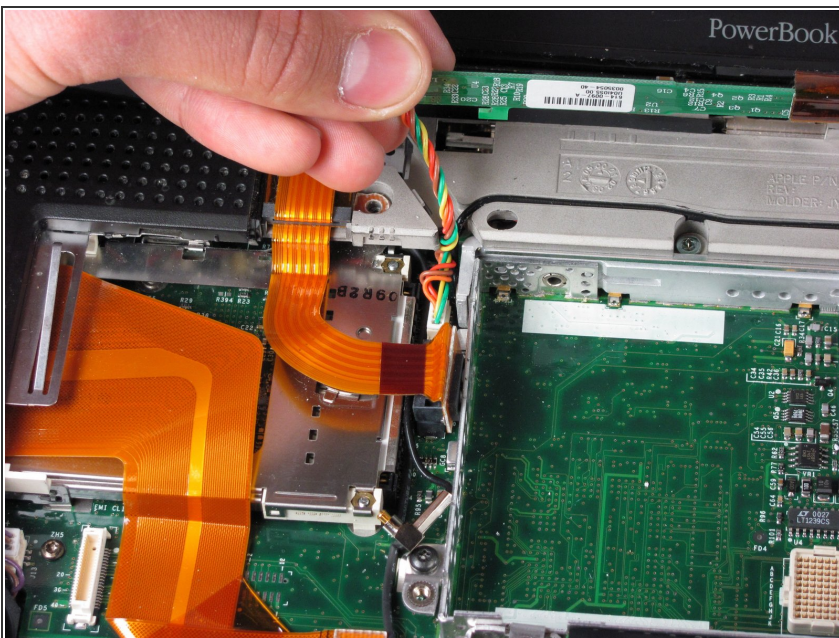


## Step 21



- Disconnect the white inverter cable. Pull it towards the left.

## Step 22



- Disconnect the inverter plug by pulling it up from the logic board.

A close-up photograph of the rear of a black MacBook Pro. The image shows a row of ports: two FireWire ports (highlighted with red boxes), a headphone jack, a microphone jack, two USB ports, an Ethernet port, two FireWire ports (labeled 1 and 2), a FireWire port with a wireless symbol, a FireWire port labeled 'FW OUT', a DVI port, and a FireWire port. A hand is visible at the bottom right, holding the device.

- Turn the laptop around.
- Open the port door.
- Remove the four Torx screws.

The image shows the internal components of a PowerBook G4. The logic board is visible, featuring a large white heat sink and various electronic components. A battery is connected to the board. The top of the image shows the "PowerBook" branding. The bottom of the image shows the internal components of the display assembly, including the LCD panel and various connectors.

- Turn the laptop so the front faces you.
- Pull the black Airport antenna up.



## Step 25



- Pull the display up as you hold it firmly with both hands.

To reassemble your device, follow these instructions in reverse order.