



Apple PowerBook G3 400 Modem Replacement

This guide will show you how to remove and replace the modem in your device.

Written By: Byron Hoefer



INTRODUCTION

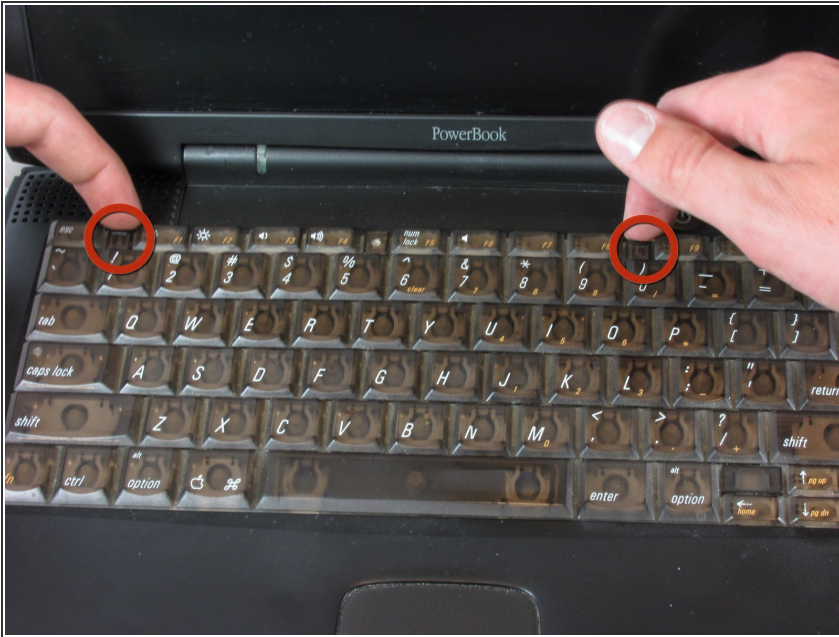
This guide will be teaching you how to easily replace the modem in your computer.



TOOLS:

- [Phillips #1 Screwdriver](#) (1)
 - [T8 Torx Screwdriver](#) (1)
-

Step 1 — Keyboard



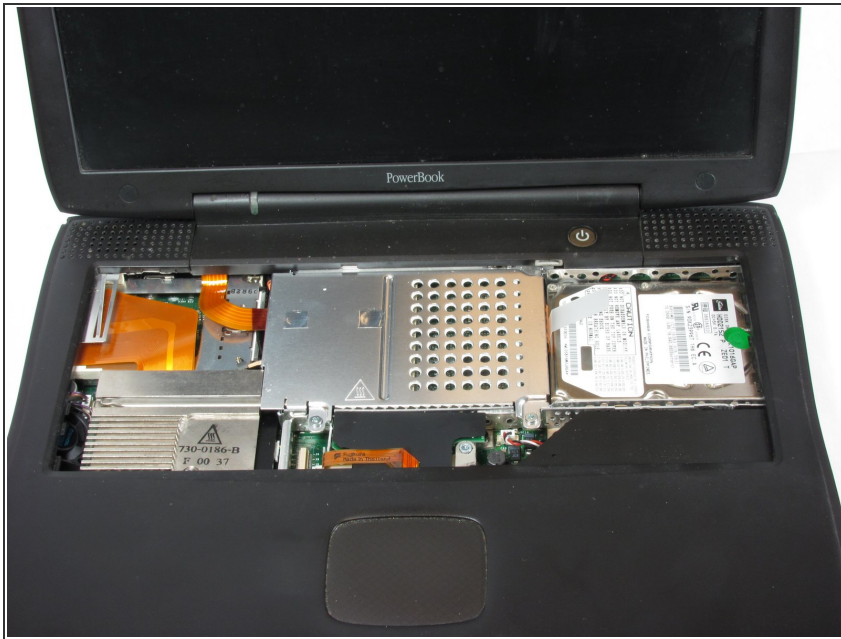
- Pull the keyboard tabs toward you while lifting up on the keyboard until it releases from its hold.
- To lift the keyboard out, pull it up and away from you. Then place the keyboard on the track pad.

Step 2



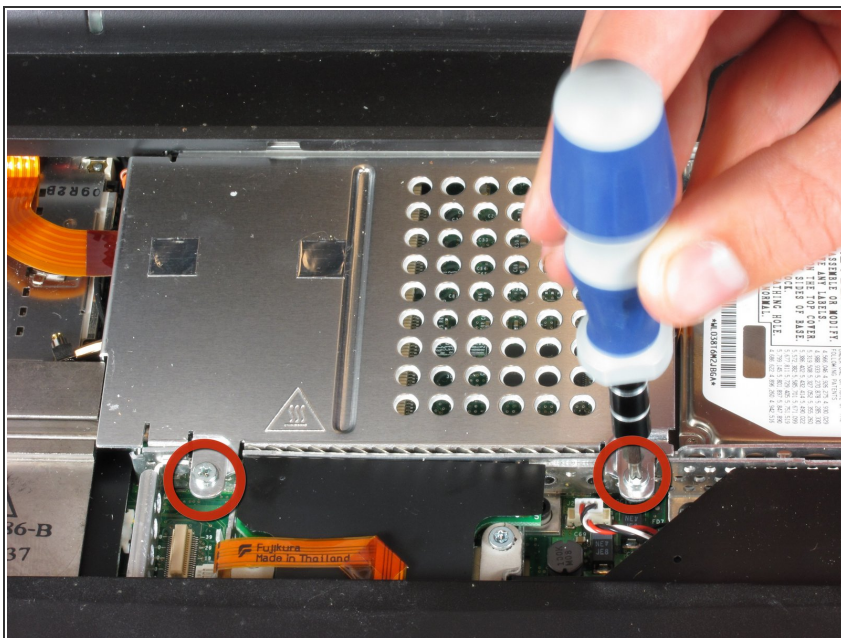
- Pull the keyboard ribbon vertically from the logic board to release connection.
- ⓘ The connector may be tight and difficult to remove. If stuck, try rocking the connector back and forth while pulling up until it releases. This same process can be used for many of the connectors on this device.
- ⓘ Remove battery and CD/DVD drives before proceeding any further.

Step 3



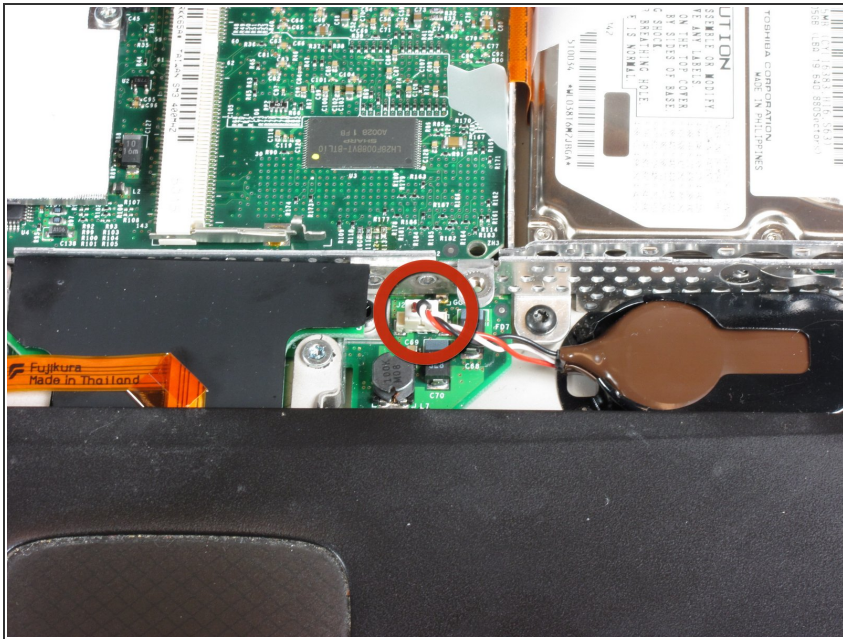
- Your computer should look approximately like this.

Step 4 — RAM



- Remove the two silver Phillips #1 screws that attach the heat shield to the metal framework.
- Lift the heat shield up and toward you.

Step 5



- Pull the PRAM battery cable vertically upward to disconnect it.
- Remove the battery by pulling up and to the left.

Step 6



- Remove the two T8 Torx screws that attach the heat sink to the processor.
- Remove the long silver Phillips #1 screw from the heat sink.

Step 7



- Lift up the heat sink unit from the left side and remove.

Step 8



- Lift the processor on the right side and pull directly up.
- The RAM chips should be in the slots on the processor.

Step 9



- After removing the RAM, your laptop should now look like this.

Step 10 — Modem



- Remove the single black Torx screw from the modem.
- Remove the black rectangle that is being held on by the one Torx screw.

Step 11



- Using your fingers, lift the modem from the socket it is plugged into.

Step 12



- Disconnect the cable that is attached to the end of the modem to remove the modem.

To reassemble your device, follow these instructions in reverse order.