



Apple Studio Display M2454 CCFL Inverter Replacement

Written By: Dylan Perry



INTRODUCTION

The CCFL Inverter is a vital part of the Apple Studio Display monitor and if it fails the monitor will have serious display problems. The CCFL inverter is what provides the backlight for the monitor. If it fails, the screen will essentially become black. This part, however, can be replaced with a new board relatively easily.



TOOLS:

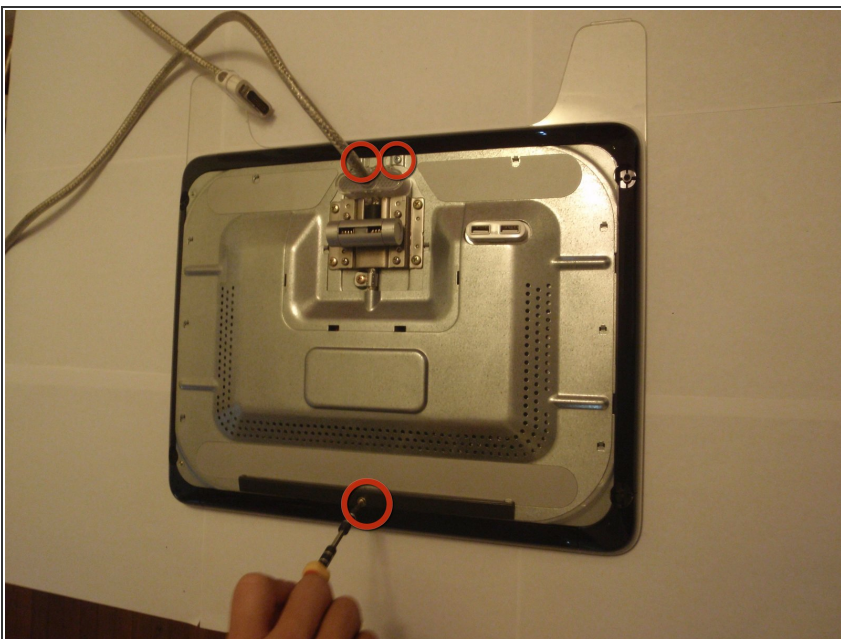
- [2 mm Hex Screwdriver](#) (1)
 - [Phillips #2 Screwdriver](#) (1)
-

Step 1 — CCFL Inverter



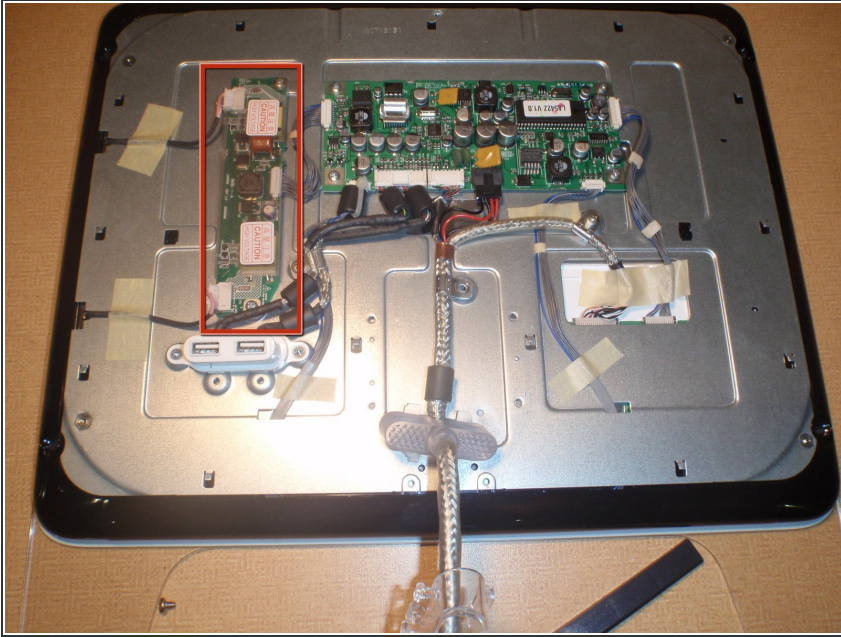
- First the back panels must be removed from the monitor.
- First remove the three 2mm hex screws from the top of the monitors stand.
- Then, locate and remove the four 2mm hex screws on the corners of the back panel and remove them with the 2mm hex screwdriver.
- Finally, the back panels can be removed by pulling the main cable through the opening and sliding the panels away.

Step 2



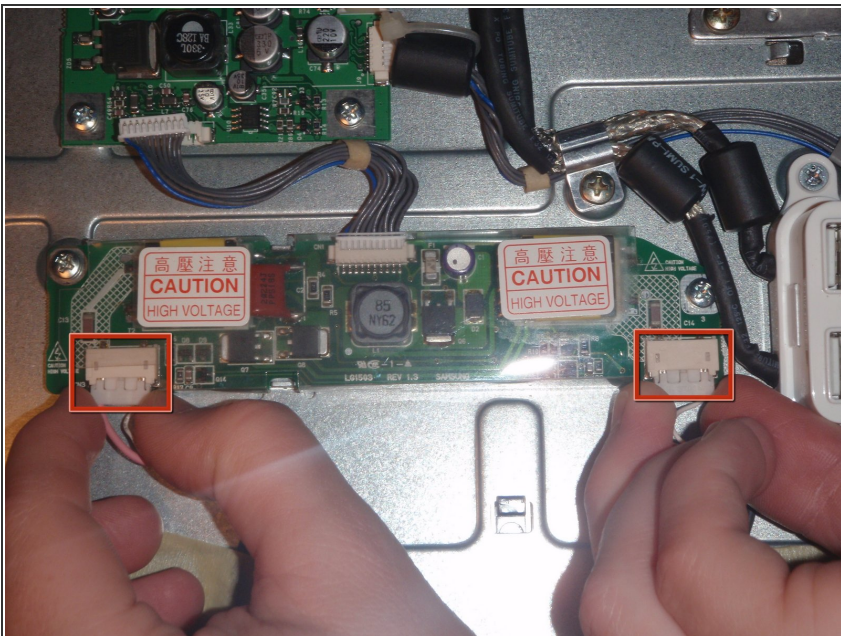
- Remove the metal backing.
 - Remove the single screw at the top and the two screws at the bottom of the monitor with #2 philips head screwdriver.
- With the screws removed, push metal backing toward back of monitor to release its clips and pull away.

Step 3



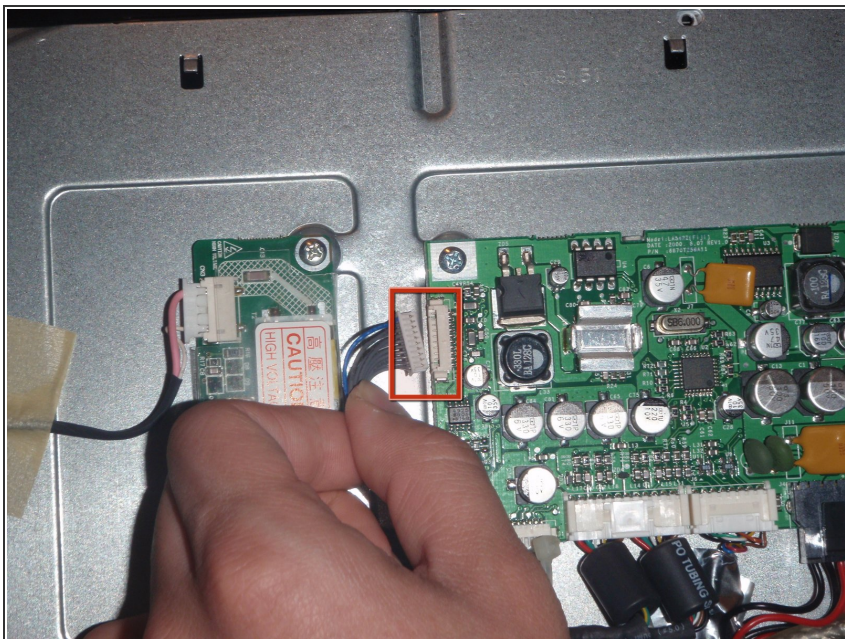
- Now, with the circuitry exposed, locate the CCFL inverter board.
- Look for the smaller of the two circuit boards with two wires and a ribbon cable running out of it.

Step 4



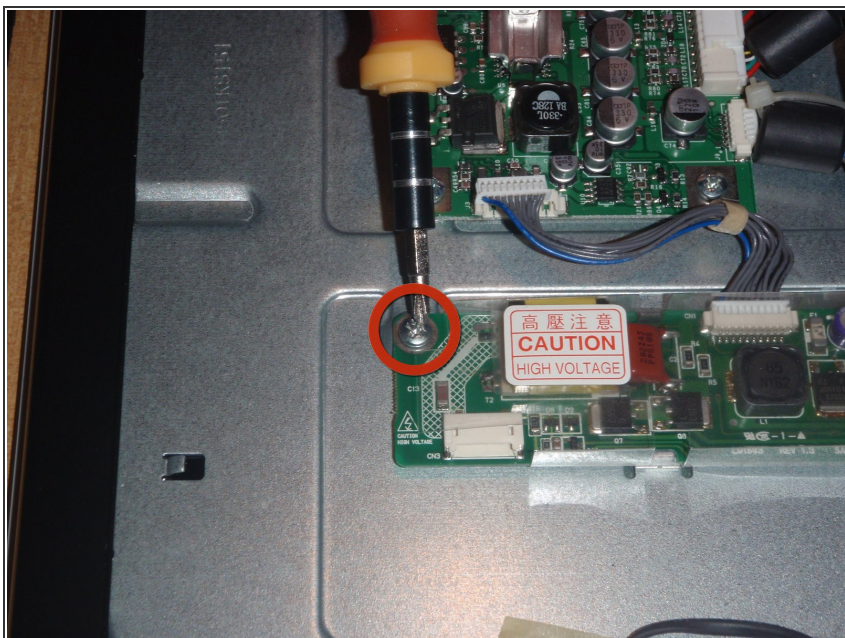
- Now the connections from the board need to be removed.
- Remove the two cables on the left side of the board, using a pin to insert into the two small holes and then pull out.
- ⓘ This step may be easier with two people.
- ⚠ Do not insert pin in hole with force or you risk damaging the connector.

Step 5



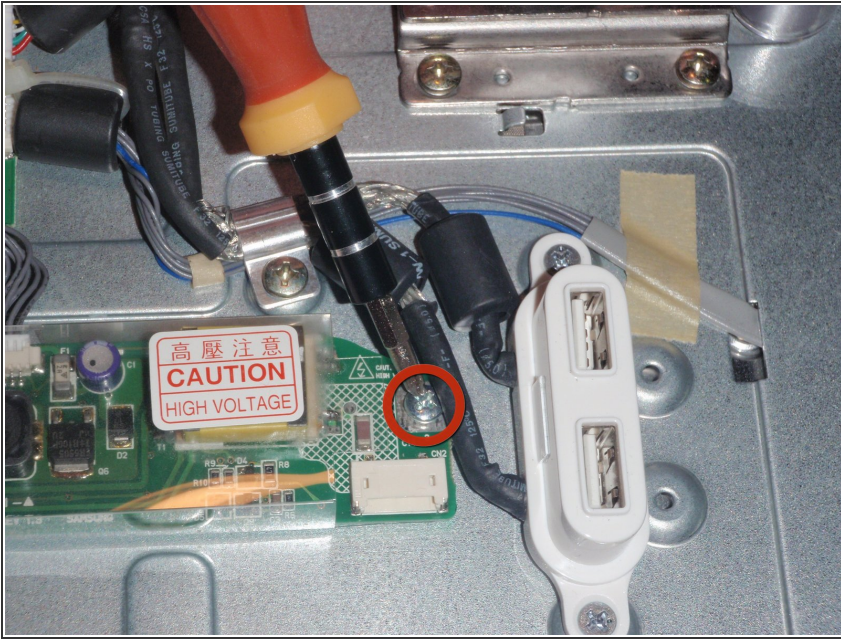
- Remove the ribbon cable on the right side of board by pulling it away from the LCD main board with hand.

Step 6



- Remove the top philips head screws holding the board to the monitor with #2 philips head screwdriver.

Step 7



- Remove the bottom philips head screw and pull the CCFL Inverter board away from monitor.
- To replace this part with a new one, simply follow these directions in reverse using the new board.