



Apple Studio Display M2454 Teardown

Written By: Dylan Perry



INTRODUCTION

Here you will see a breakdown of the Apple Studio Display M2454. This will be useful in repairing broken or malfunctioning parts in the future.

TOOLS:

- [2 mm Hex Screwdriver](#) (1)
 - [Phillips #2 Screwdriver](#) (1)
-

Step 1 — Apple Studio Display M2454 Teardown



- Notice that the main components of the monitor are only accessible from the back of the device.

Step 2



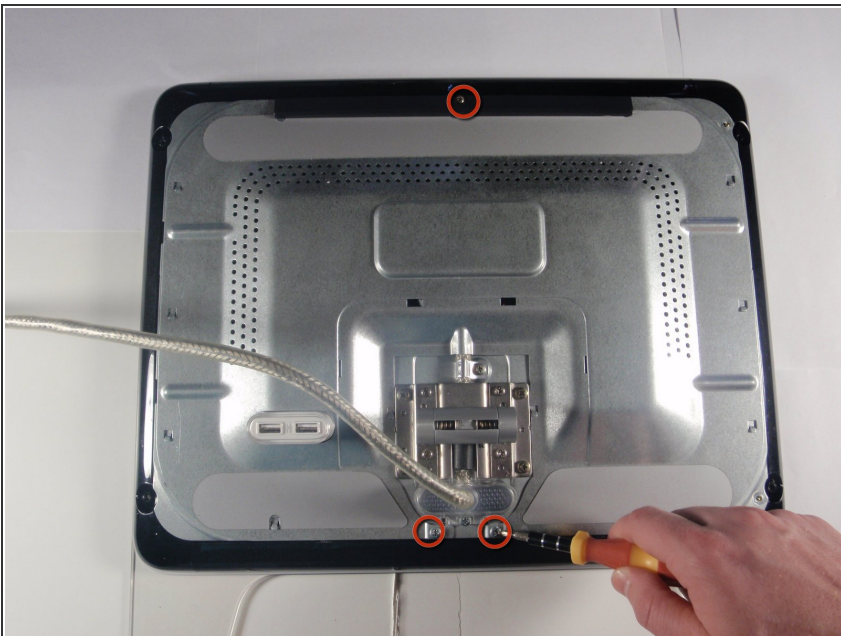
- Locate the four hex head screws located on the corners of the back panel.
- Remove the screws with a 2mm hex screwdriver.

Step 3



- Remove the clear and gray back panels.

Step 4



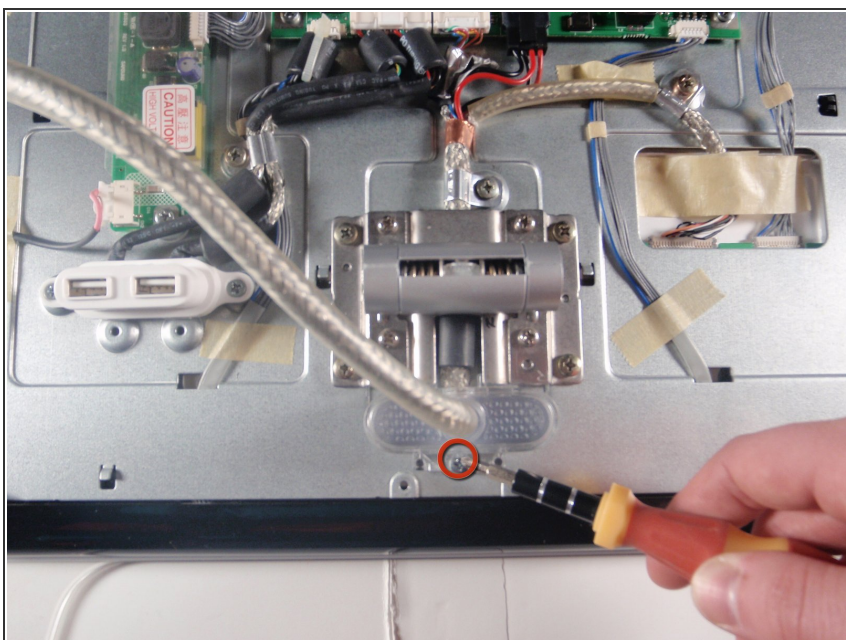
- Remove the three screws with #2 phillips head screwdriver.

Step 5



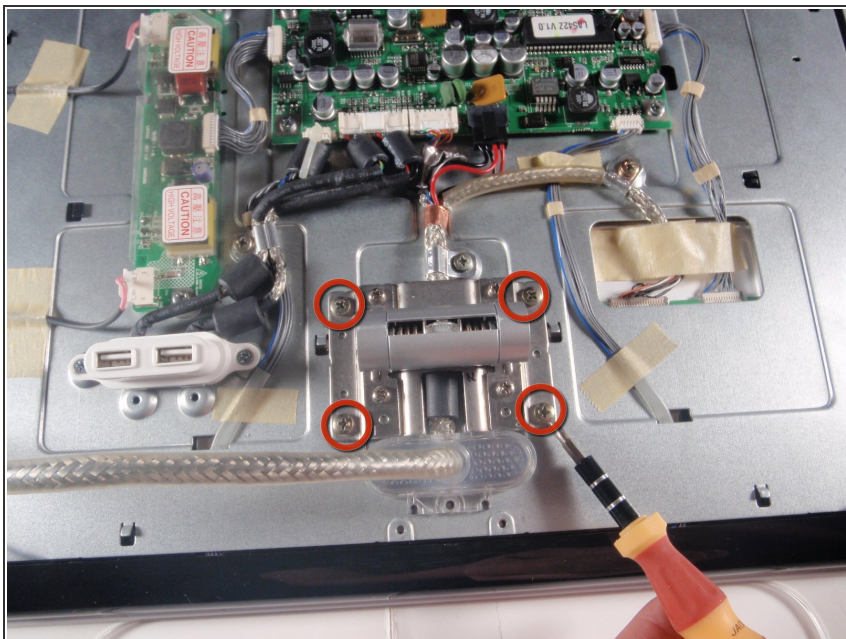
- To remove the metal panel, push towards the bottom of the monitor to release its clips and pull the panel away.

Step 6



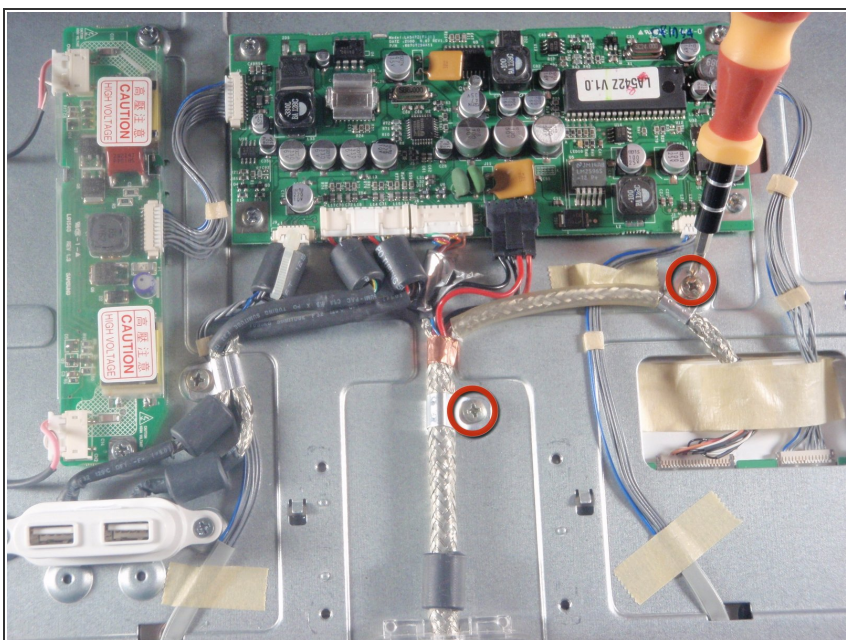
- Remove screw holding the plastic bracket with #2 Phillips head screwdriver.

Step 7



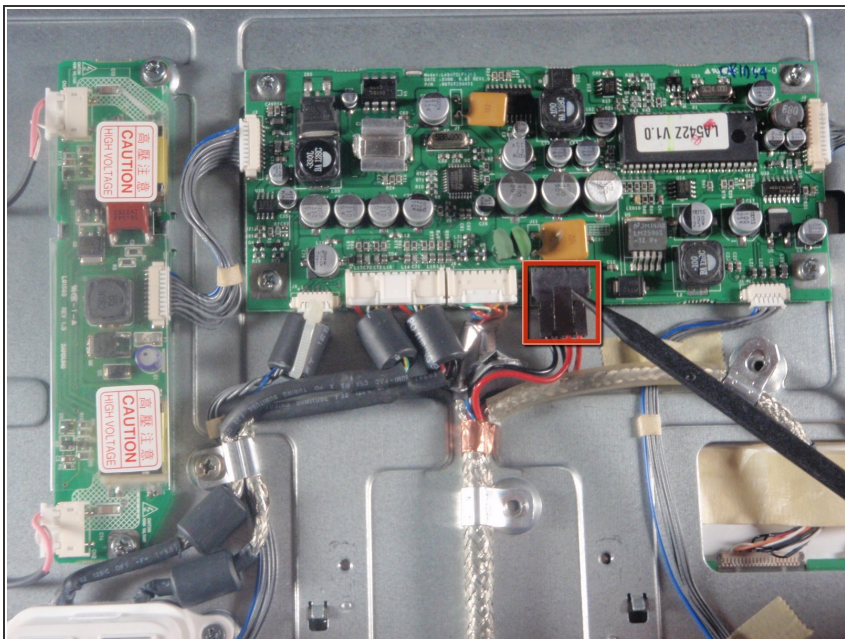
- Remove the four screws on the metal bracket.

Step 8



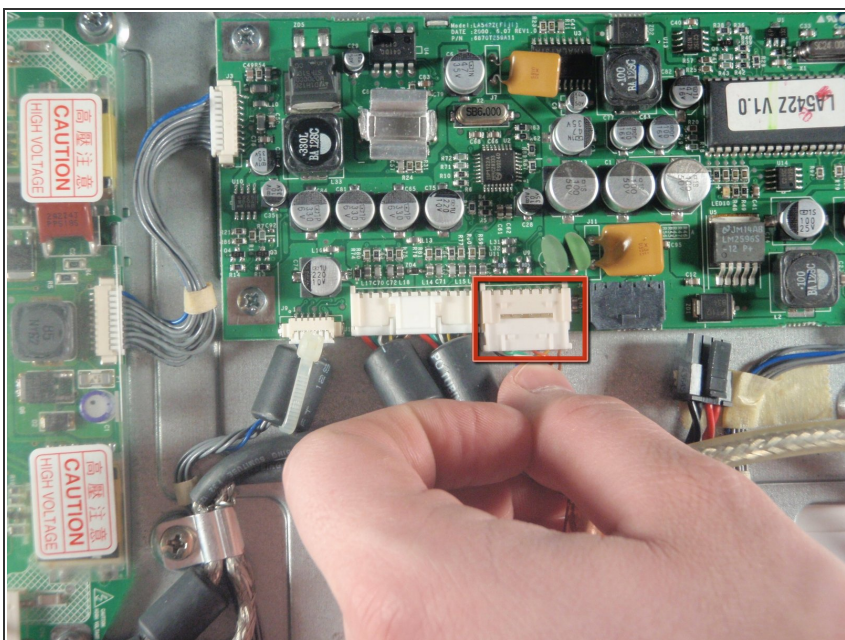
- Remove the two philips head hold-down screws with the #2 Phillips head screwdriver.

Step 9



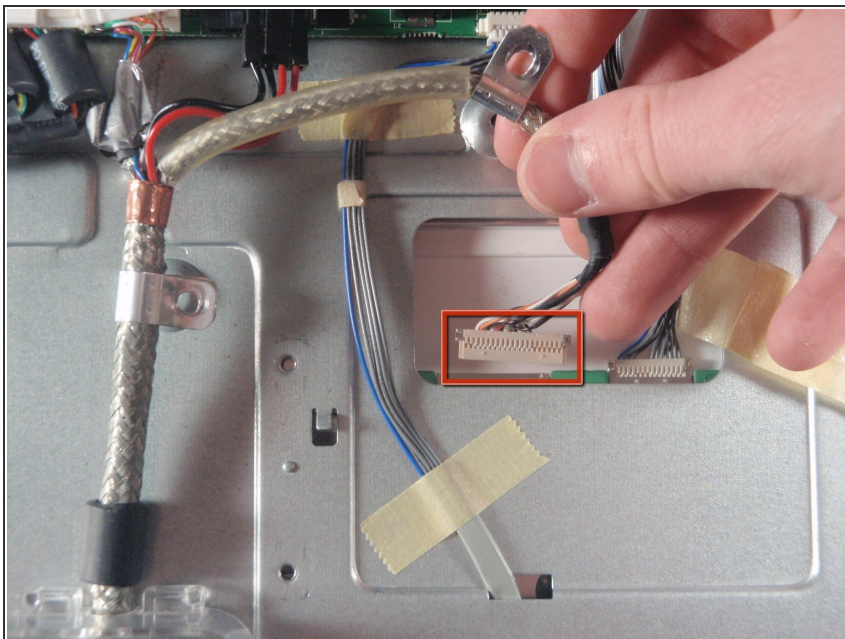
- Remove black connector by pushing the end of the tab closest to the wiring and pulling away from board.

Step 10



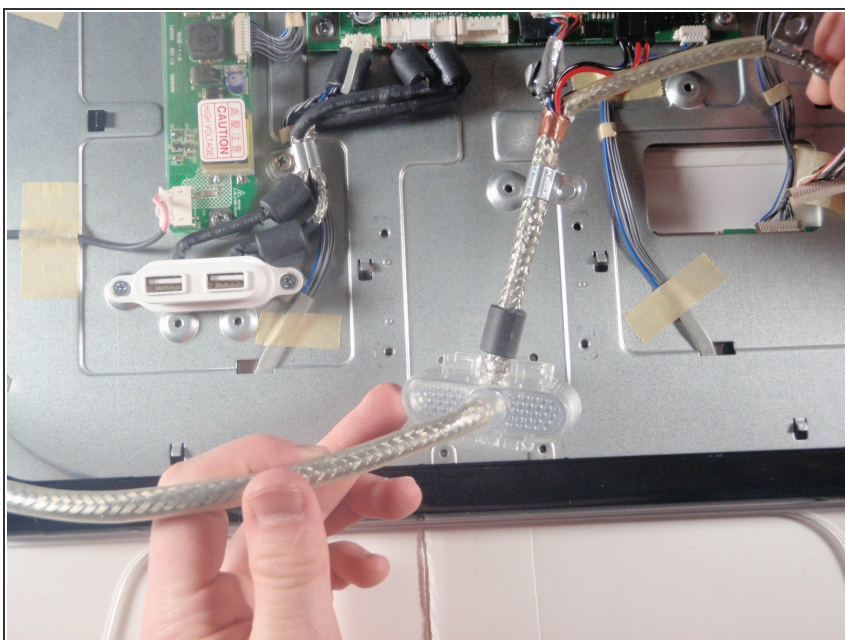
- Remove white connector by lifting tab and pulling away from board.
- ⚠ Be careful when lifting tabs, they break easily.

Step 11



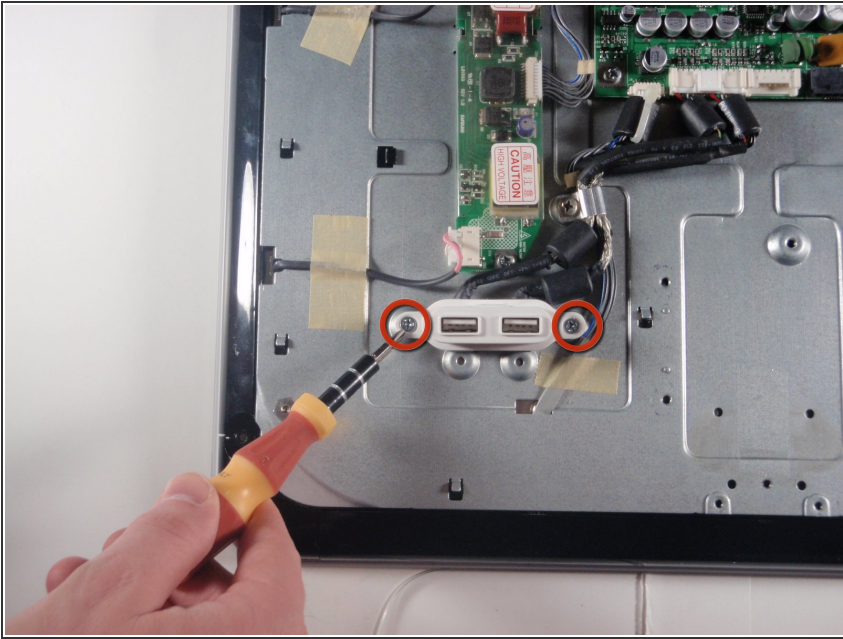
- Remove connector connected to the hold down previously removed simply by pulling with hand.

Step 12



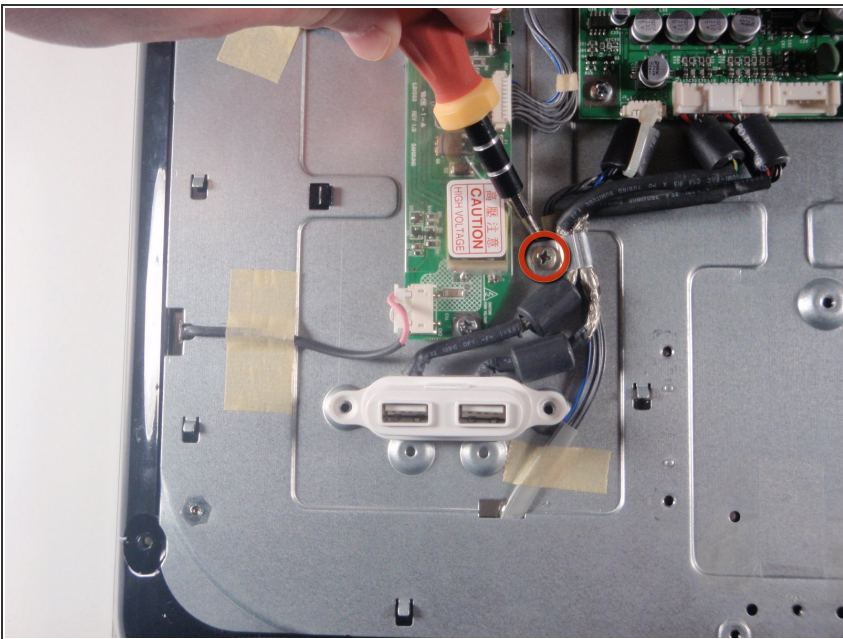
- Now that the main computer cable is detached, remove it away from monitor.

Step 13



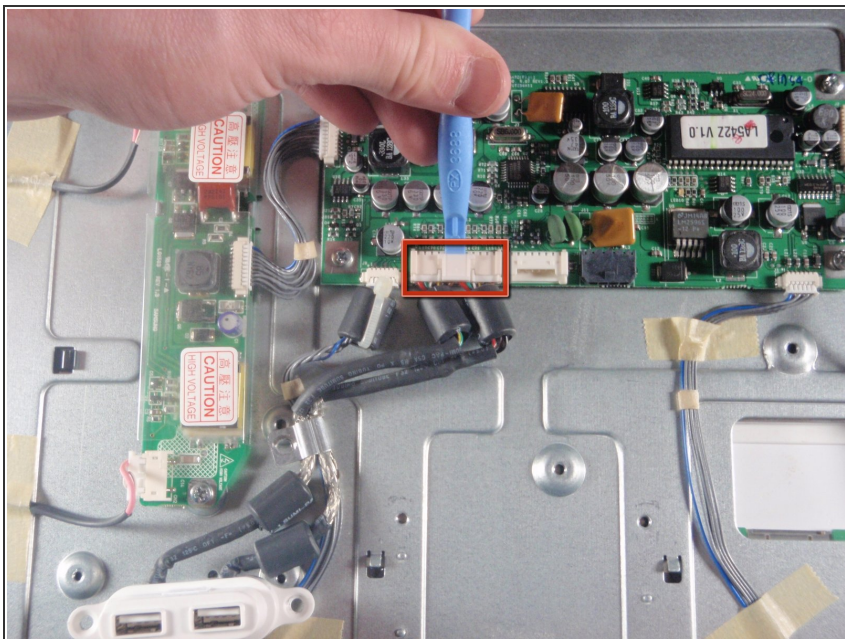
- Remove the two screws holding the USB port in place with #2 Phillip's head screwdriver.

Step 14



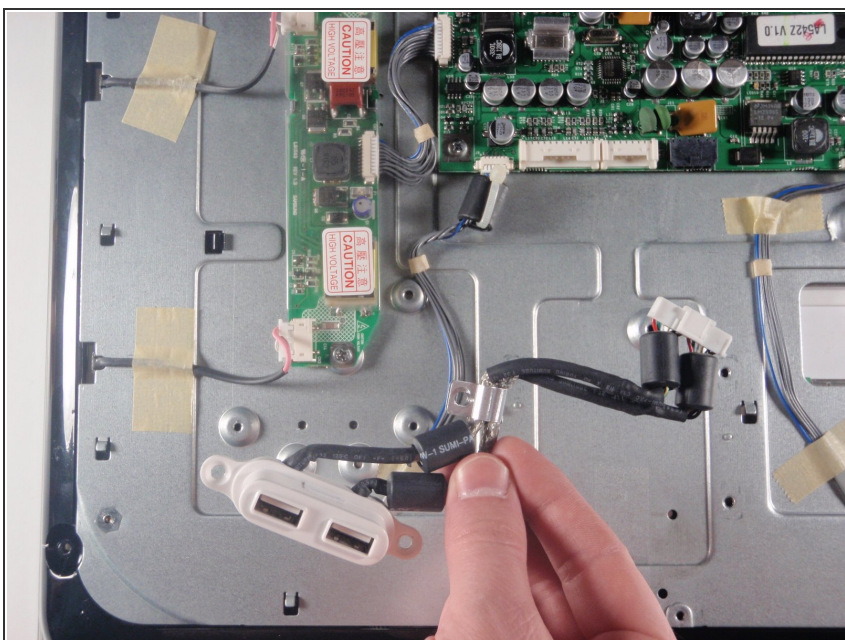
- Remove the screw on the wire hold down with #2 Phillips head screwdriver.

Step 15



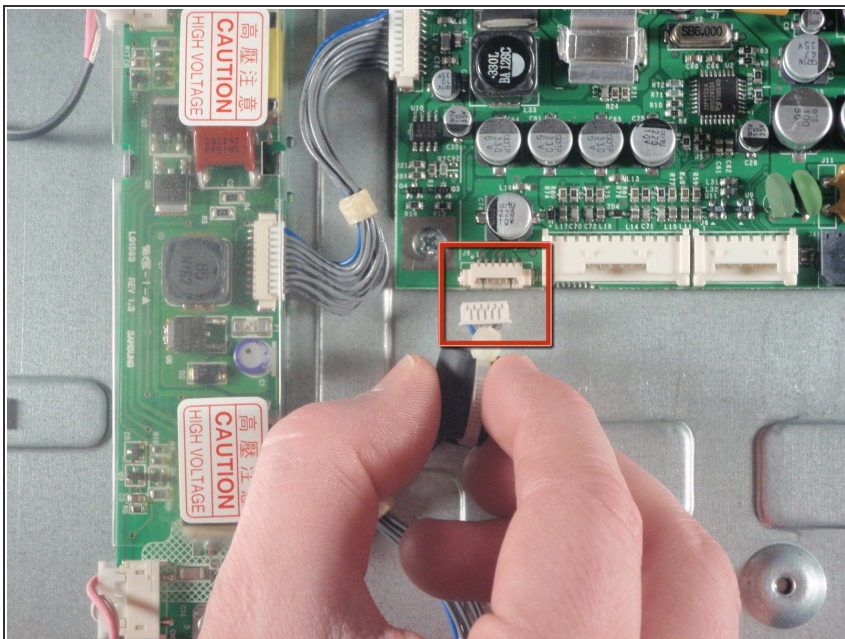
- Remove white connector connected to LCD main board by lifting tab with tool and pulling away from board.

Step 16



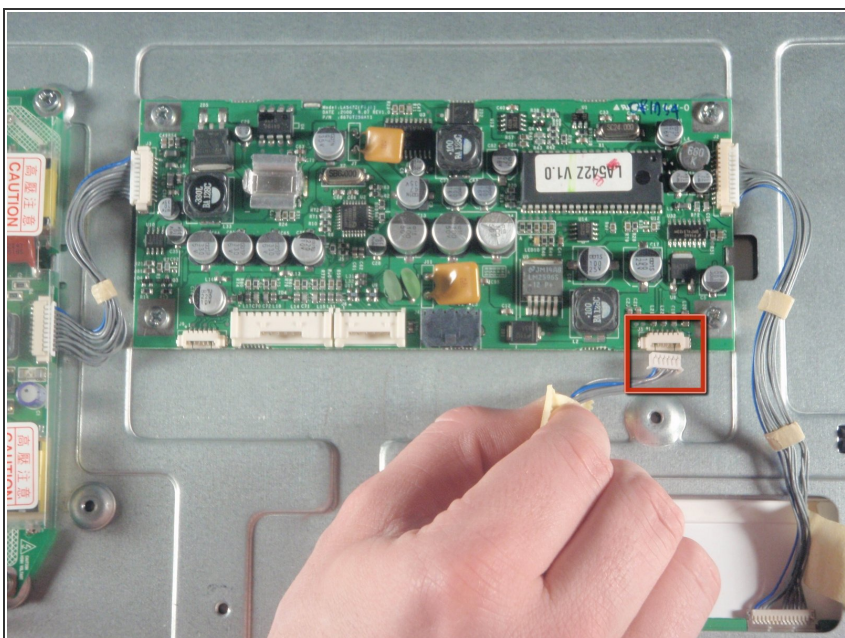
- The USB port is now detached, remove it from monitor.

Step 17



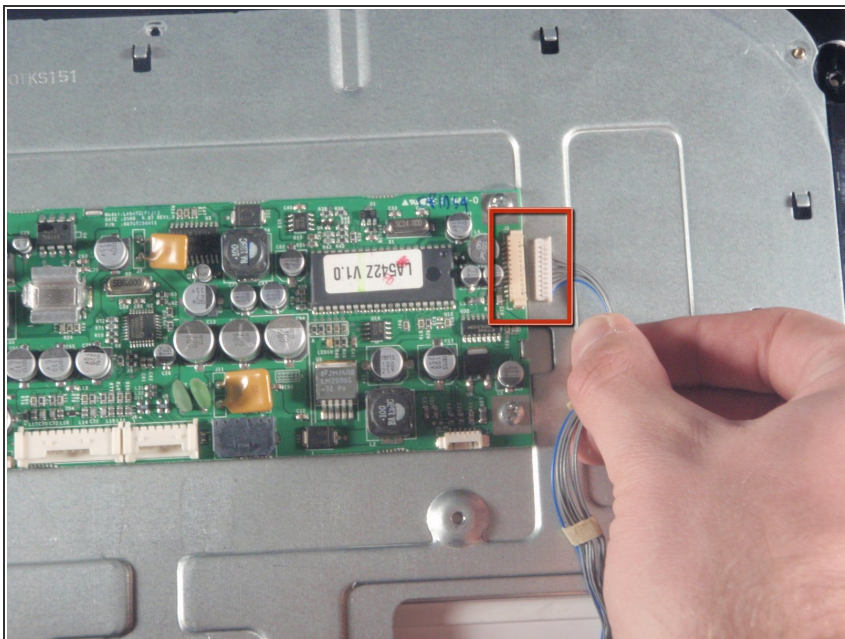
- Remove connector on the left bottom corner of the LCD main board by simply pulling with hand.

Step 18



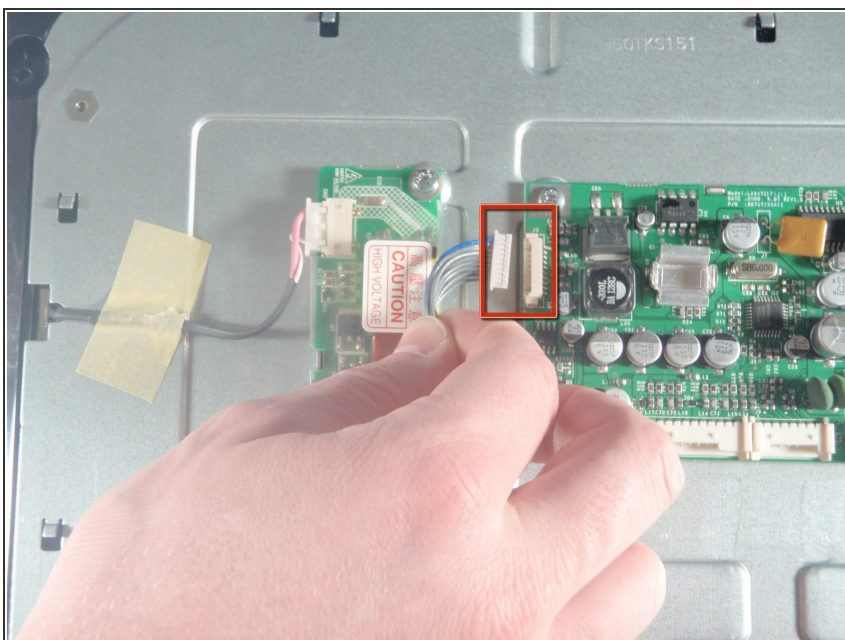
- Remove the connector on the bottom right corner by 1st removing tape first and pulling with hand.

Step 19



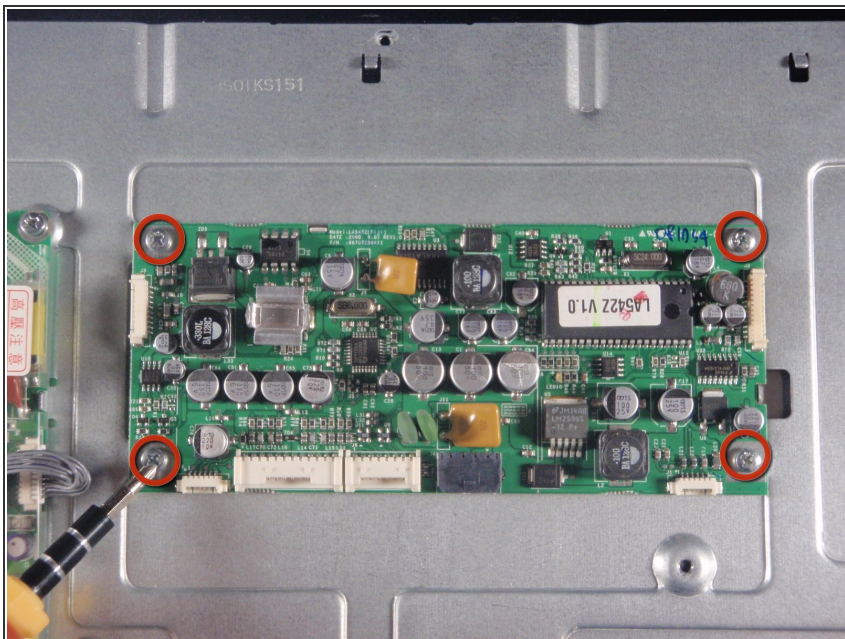
- Remove top right connector of the LCD main board by pulling with hand.

Step 20



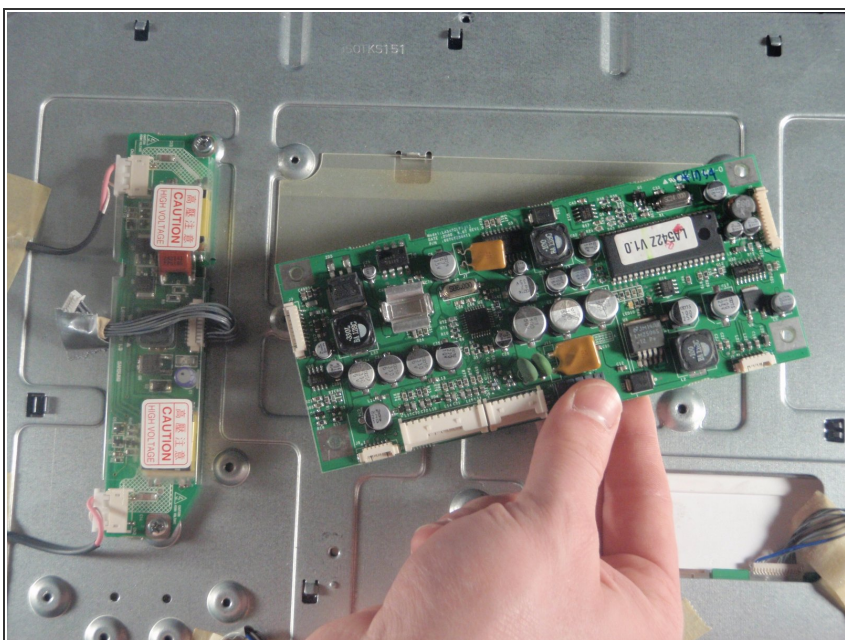
- Remove the final connector of the LCD main board by pulling with hand.

Step 21



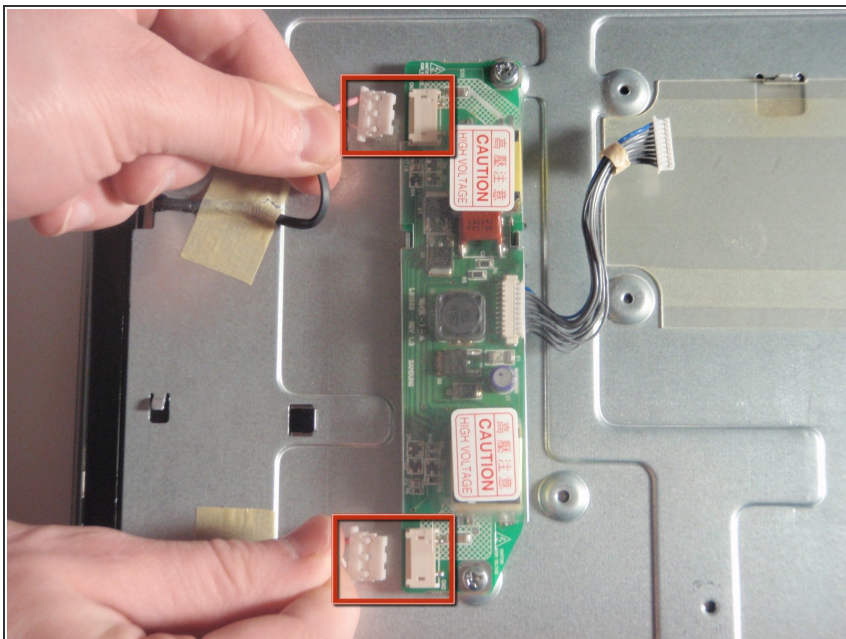
- Remove the four screws on each corner of the main board with #2 Phillips head screwdriver.

Step 22



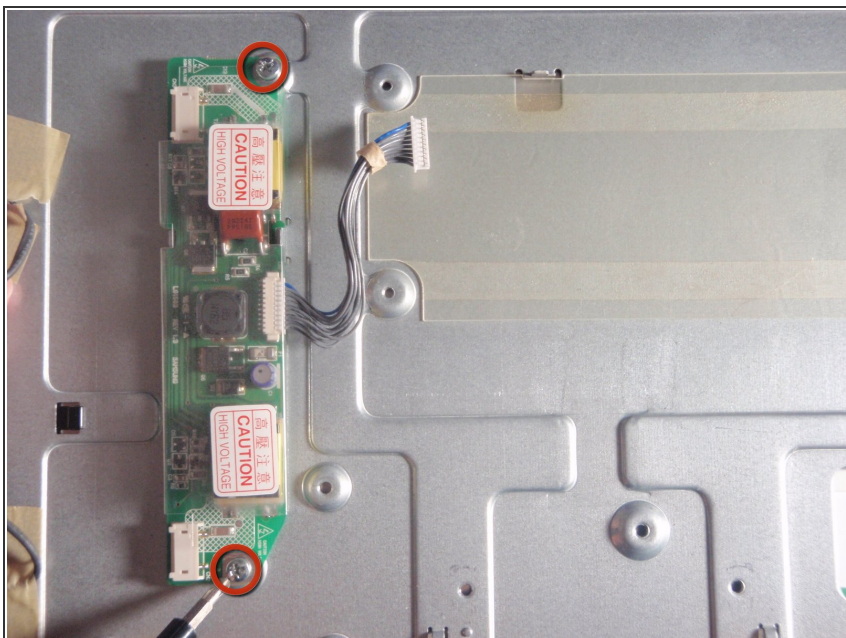
- The board is now detached, remove it from monitor.

Step 23



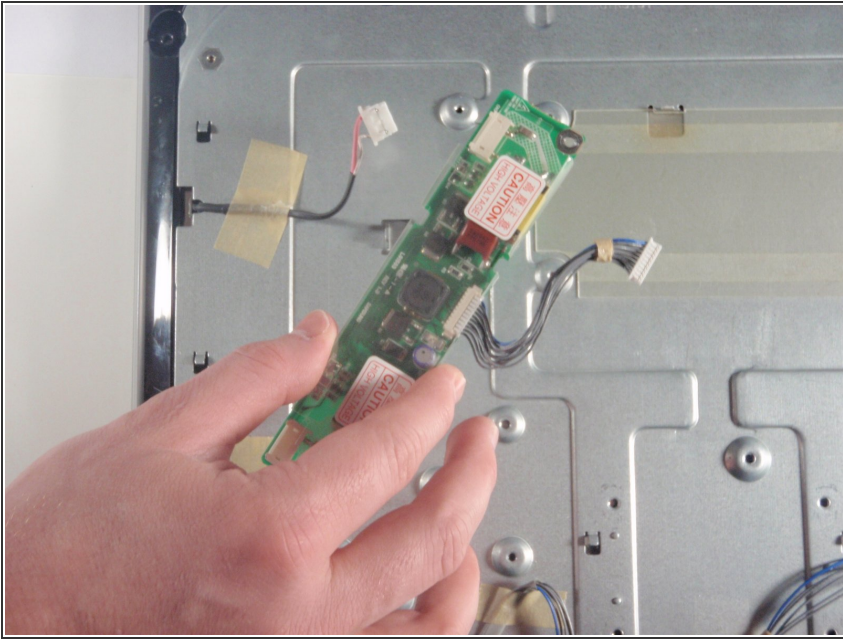
- Locate the top and bottom connector on the CCFL inverter and remove it by inserting pin into the small holes and pulling away.
- ⓘ This step may be easier with two people.

Step 24



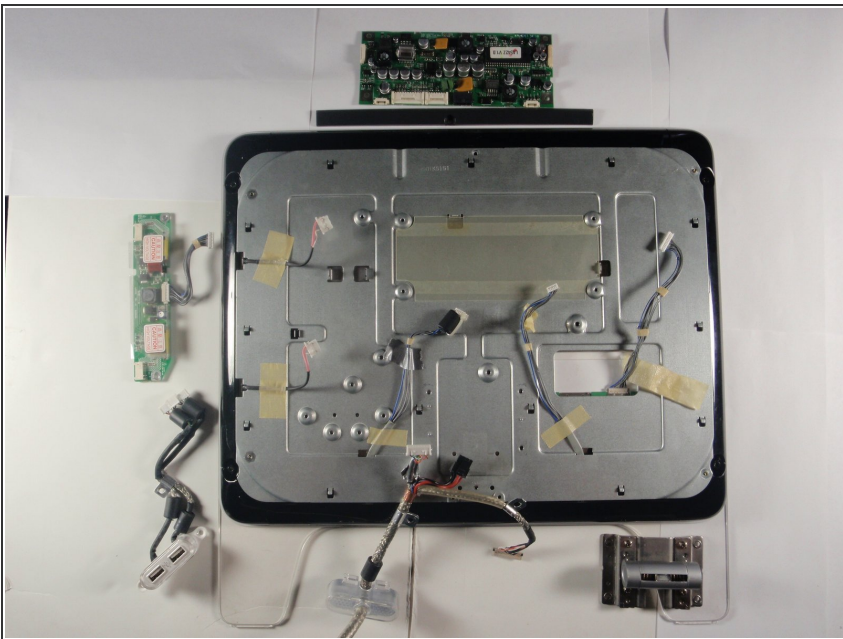
- Remove the two screws on the top and bottom of the CCFL inverter with #2 Phillips head screwdriver.

Step 25



- The CCFL inverter is now detached, remove it from monitor.

Step 26



- You have now successfully taken apart a Apple Studio Display M2454.